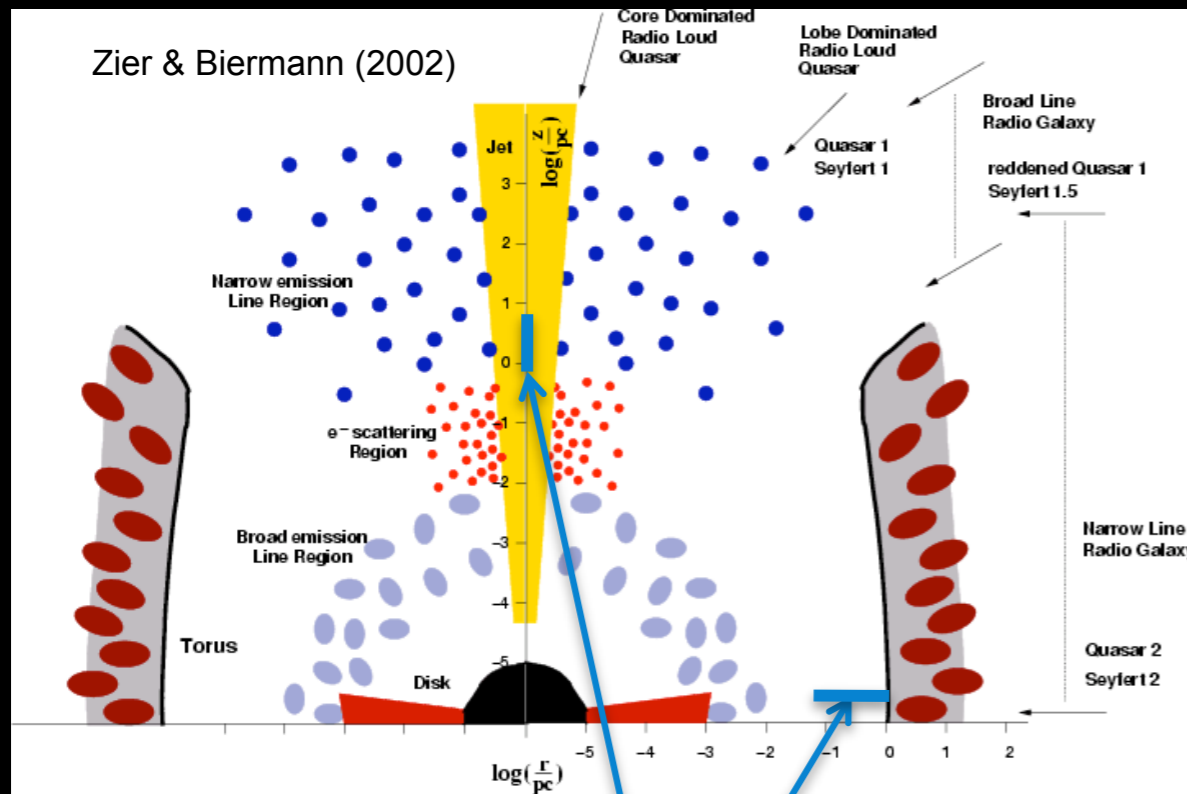


Disentangling AGN Activity and Star Formation in the Central Parsec of NGC 4945

- One of the nearest Starburst-AGN (~ 3.8 Mpc)
- One of the brightest sources above 10 keV
- Compton-thick

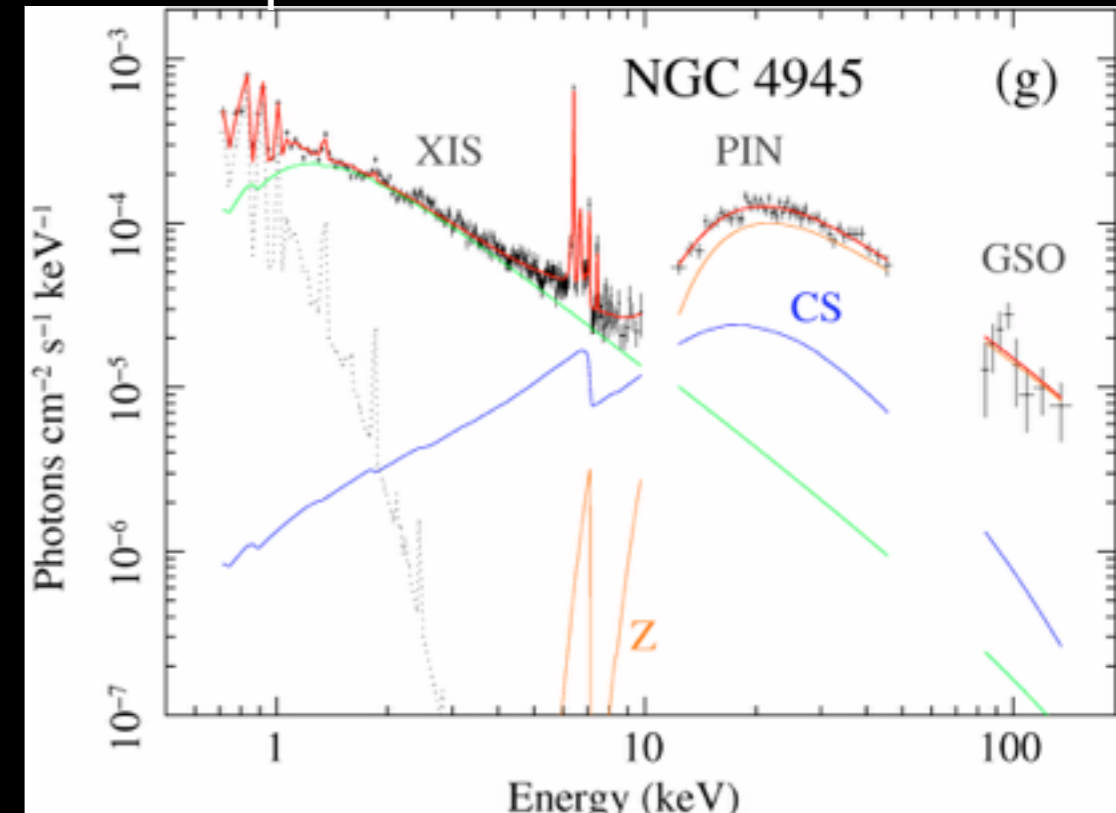


http://www.nasa.gov/mission_pages/chandra/multimedia/galaxy-ngc4945.html



H₂O masers live here.
0.1 - 1.0 pc, 10⁴ - 10⁵ R_g
In disks and outflows

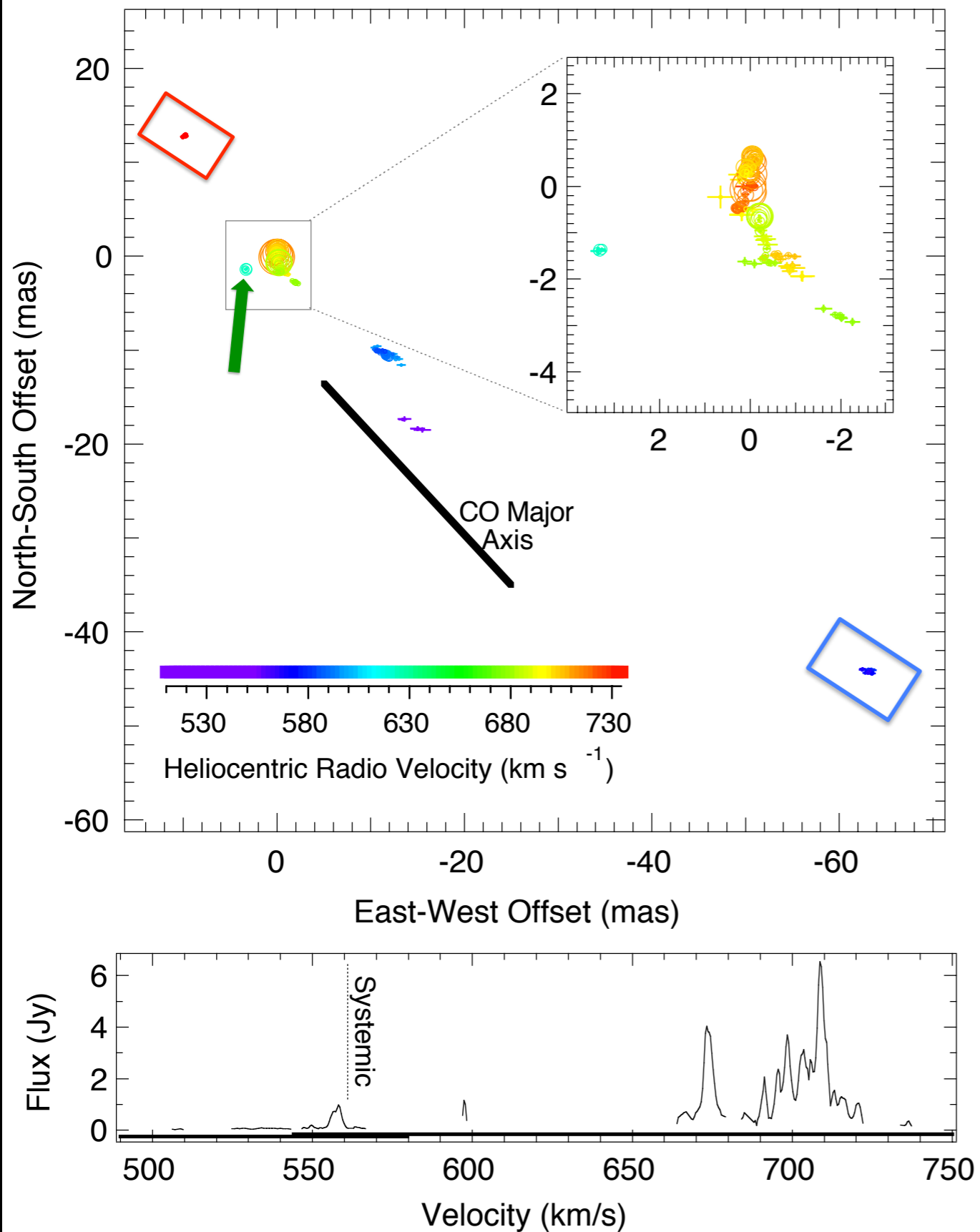
Suzaku spectrum fit with MYTorus model



NGC4945(H₂O)

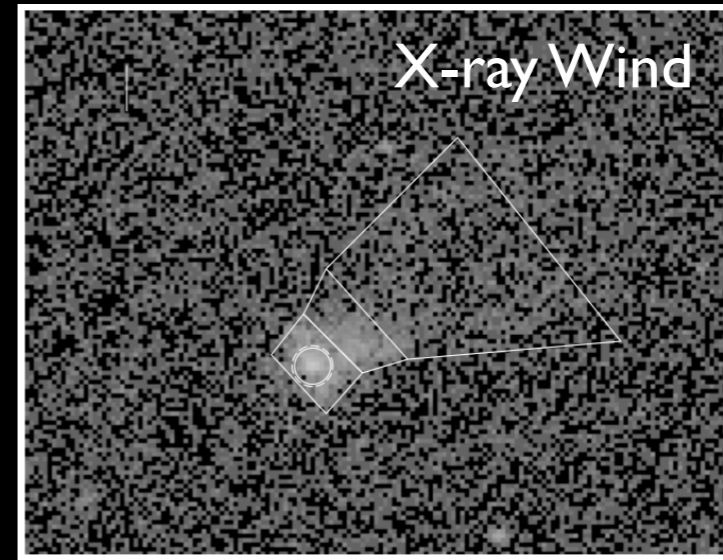
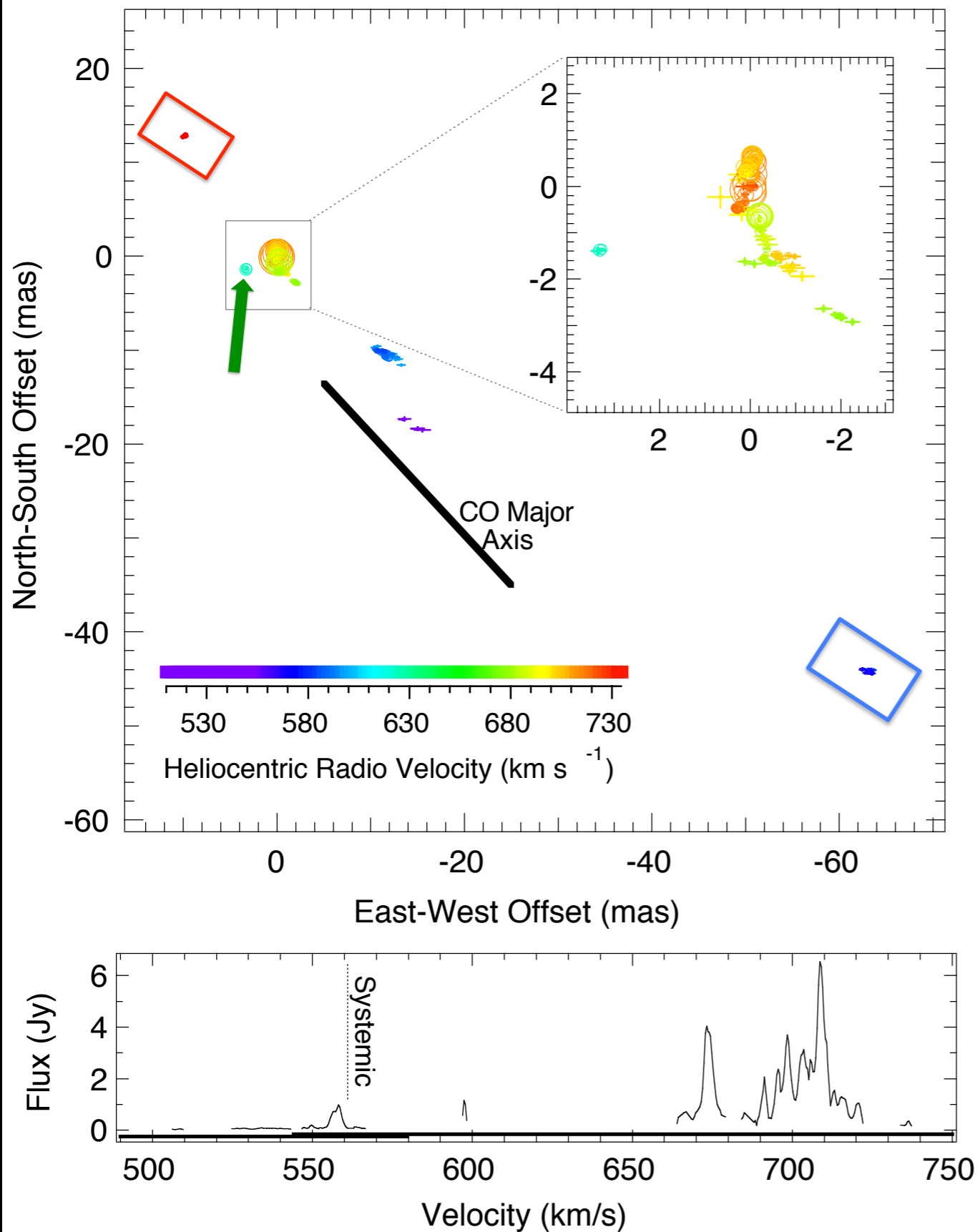
(Parkes-Tidbinbilla-Hobart-Mopra 6-97)

Very long baseline interferometry (VLBI) map
of the 22 GHz H₂O maser emission



NGC4945(H₂O)

(Parkes-Tidbinbilla-Hobart-Mopra 6-97)



Done et al. (2003)

Moorewood et al. (1996)

