



ACCU Activities 2022

Rebeca Gonzalez Suarez - Uppsala University

What is ACCU?

- **Advisory Committee of CERN Users (ACCU)**
- Forum for discussion between CERN Management and the representatives of the CERN Users community (Delegates)
 - to review the practical means taken by CERN for the work of Users
 - Website where you can read the mandate: <https://accu.web.cern.ch/>

What is ACCU?

- Each member State: 1 or 2 Delegates (depending on size)
- Each associate members: 1 Delegate
- Non-member states: 4 Delegates (organised in regions)
- CERN: 2 Delegates
- The Chairperson of ACCU is elected from among the Delegates.
- I am the Swedish 🇸🇪 delegate from Jan 2020
 - rebeca.gonzalez.suarez@physics.uu.se

ACCU Meetings

- ACCU meetings are held **four times per year**.
- The meetings are closed
 - agenda, minutes and uploaded presentations are open and are accessible by anyone (with exceptions)
 - <https://indico.cern.ch/category/1058/>
 - The meetings have public minutes, and you can check everything we discuss

ACCU Meetings

- The meetings of ACCU are attended by a member of the Directorate, often the DG, by the Head of the Users' Support, who also acts as ACCU Secretary, as well as by other members of the CERN Management and Departmental Representatives.
- A representative of the CERN Staff Association also attends the meetings.

Topics discussed in ACCU meetings

- There are many topics discussed by ACCU:
 - Health care
 - Housing
 - Travel, Mobility, and Transport
 - Environment
 - CERN Restaurants
 - ...
- <https://accu.web.cern.ch/node/27>
- <https://accu.web.cern.ch/>

Up to you! If there is anything you think we should be discussing, or something you have questions for, let me know!



Hot topics for ACCU this year

- COVID protocols → almost none left
- Insurance:
 - New insurance model for users based at CERN by Allianz
- Ukraine

09:35 → 09:55 **CERN's support to our Ukrainian colleagues**

Speaker: Lore Taillieu (CERN)

 CERN actions in su...

 CERN actions in su...

🕒 20m

09:55 → 10:10 **Situation of Ukrainian Users**

Speaker: Tetiana Hryn'ova (Centre National de la Recherche Scientifique (FR))

 ACCU-Ukraine-Marc...

🕒 15m

Things (only) the Swedish community brought up last year

a) Medical follow-up of Radiation Workers (Stefan Roesler, Deputy Head of HSE Unit)

A question was raised by the Swedish Delegate concerning medical tests required for obtaining dosimeters: In the past, those medical tests were carried out by the CERN Medical Service for Users permanently stationed at CERN. This does not happen anymore and during Covid-times some of the Swedish Users had to travel back to get medical tests done.

The Deputy Head of HSE Unit, S. Roesler, explained that practise at CERN has changed since 2019, unrelated to Covid-19: Following a regulatory change in Europe ([Directive Euratom 2013/59](#)), including Switzerland (decision of Swiss National Accident Insurance Fund, SUVA, of July 2016), medical surveillance related to occupational exposure to ionizing radiation of CERN Category B Radiation Workers have been discontinued. Category B workers are occupationally exposed persons who may be exposed in the exercise of their profession to an individual dose of less than 6 mSv in 12 consecutive months.

This is in line with the [Swedish Radiation Protection legislation since 2009](#), specifying that no individual dosimetry and no medical follow-up is required for Radiation Workers of Category B. All Swedish Users that are Radiation Workers are classified as Category B and hence, do not require a medical test anymore to obtain a dosimeter.

Things (only) the Swedish community brought up last year

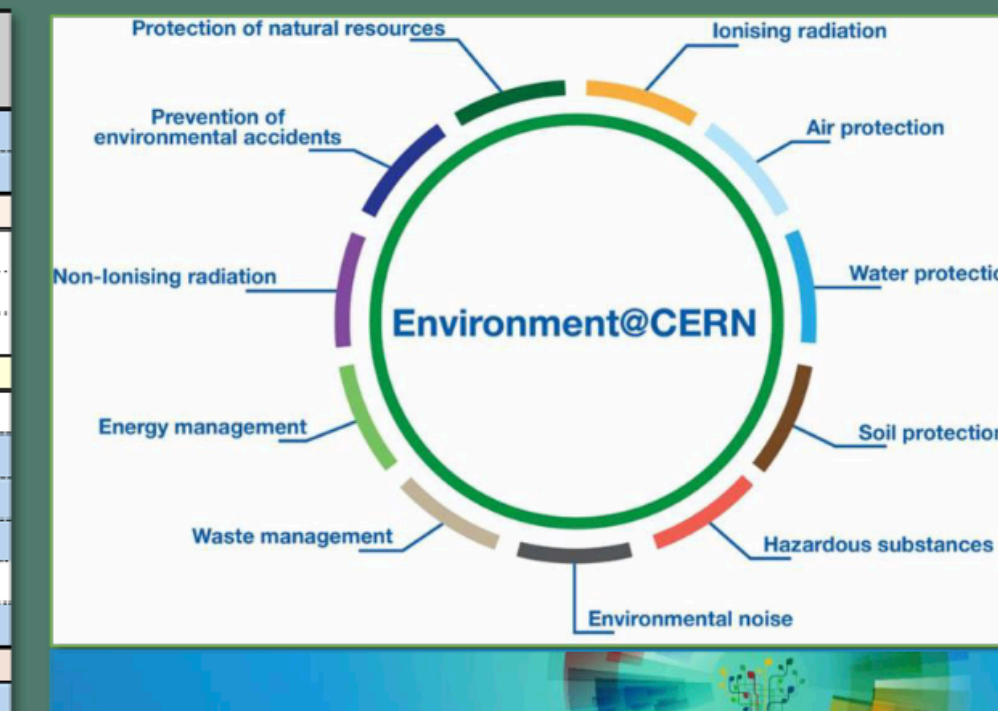
Trees plantations

Plantations:

- Nov-Dec 2019: Plantations of 100 trees on the Swiss side of Meyrin site
- Jan-Feb 2022: Plantations of 100 trees on Meyrin site.

CERN Environmental Protection Steering Board (CEPS): biodiversity action plan

| N° | Mesures | Priorité | 2021 | 2022 | 2023 | 2024 | 2025 |
|---|--|----------|------|------|------|------|------|
| | Suivi et pilotage du plan d'action | Haute | | | | | |
| | Resource SCE-SAM-CE pour permettre le développement des mesures (100% FTE) | Haute | | | | | |
| Intégrer la biodiversité dans la planification et la réalisation des aménagements du CERN | | | | | | | |
| 1 | Intégrer et prendre en compte les sites à enjeux de biodiversité dans le master plan | Haute | 5% | | | | |
| 2 | Identifier et prendre en compte les enjeux de biodiversité en phase d'avant projet/ travaux | Haute | 100% | | | | |
| 3 | Réduire la pollution lumineuse | Moyenne | | | | | |
| Développer et préserver durablement la biodiversité, les connectivités biologiques, les milieux, arbres et espèces de valeur | | | | | | | |
| 4 | Finaliser l'inventaire du patrimoine arboré | Moyenne | 25% | | | | |
| 5 | Renforcer le maillage bocager sur le domaine non clôturé | Moyenne | | | | | |
| 6 | Favoriser une agriculture raisonnée sur les terrains du domaine non-clôturé du CERN | Moyenne | | | | | |
| 7 | Améliorer la gestion différenciée des espaces verts et espaces naturels | Moyenne | | | | | |
| 8 | Renouveler le plan de gestion des forêts du CERN et intégrer un volet biodiversité | Moyenne | | | | | |
| 9 | Développer et mettre en œuvre un plan d'arborisation pour atténuer les effets des îlots de chaleur | Haute | | | | | |
| Gérer les espèces exotiques envahissantes | | | | | | | |
| 10 | Mise en œuvre d'un plan d'action pour lutter contre les espèces exotiques envahissantes | Moyenne | | | | | |
| Faire connaître et découvrir la biodiversité | | | | | | | |
| 11 | Elaborer un plan de communication sur la biodiversité | Haute | | | | | |
| Projets environnementaux & sociaux | | | | | | | |
| 12 | Mettre en place de l'apiculture, verger conservatoire, maraîchage et jardins familiaux | Moyenne | | | | | |



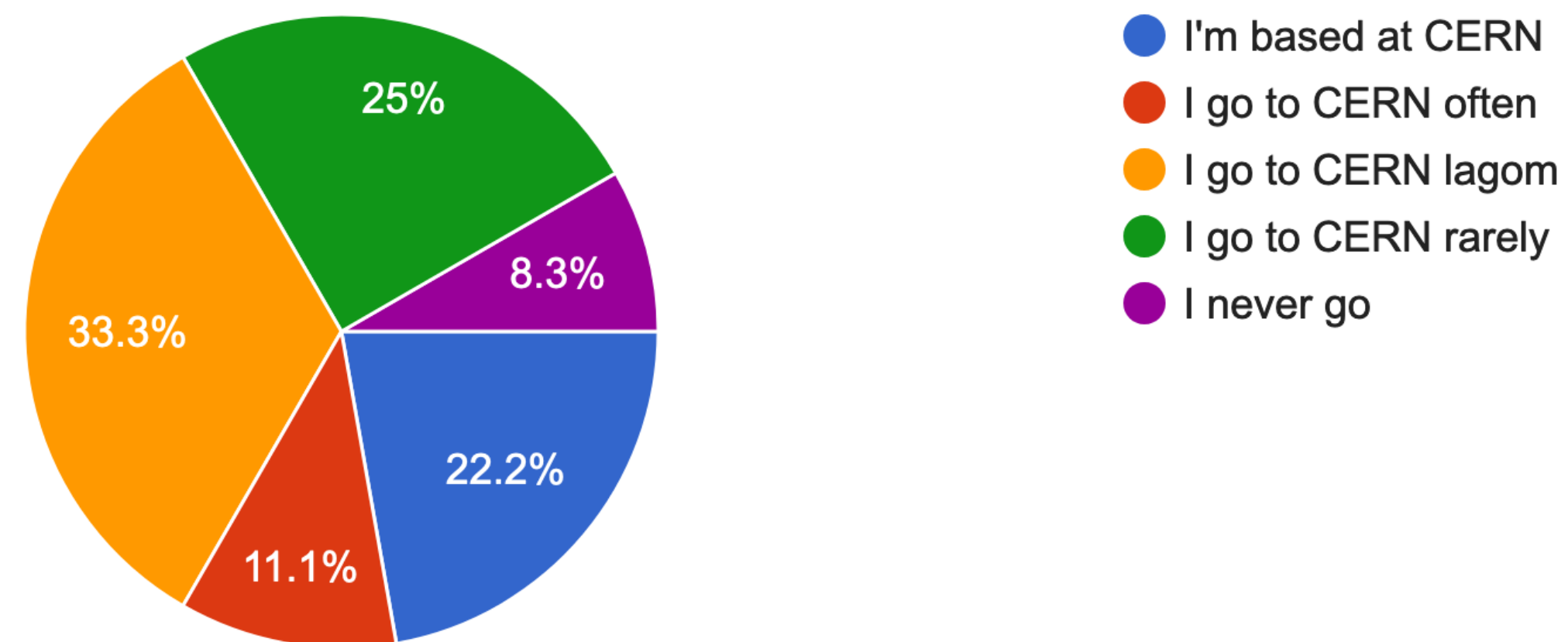
More trees expected at CERN!

https://indico.cern.ch/event/975962/contributions/4110380/attachments/2355600/4019932/ACCU_134_30-Nov-2021_SCE.pdf

2021 Questionnaire

- I sent you a form to fill and 36 of you answered (thank you!!)
- As before, I only came back to those leaving a explicit question/comment

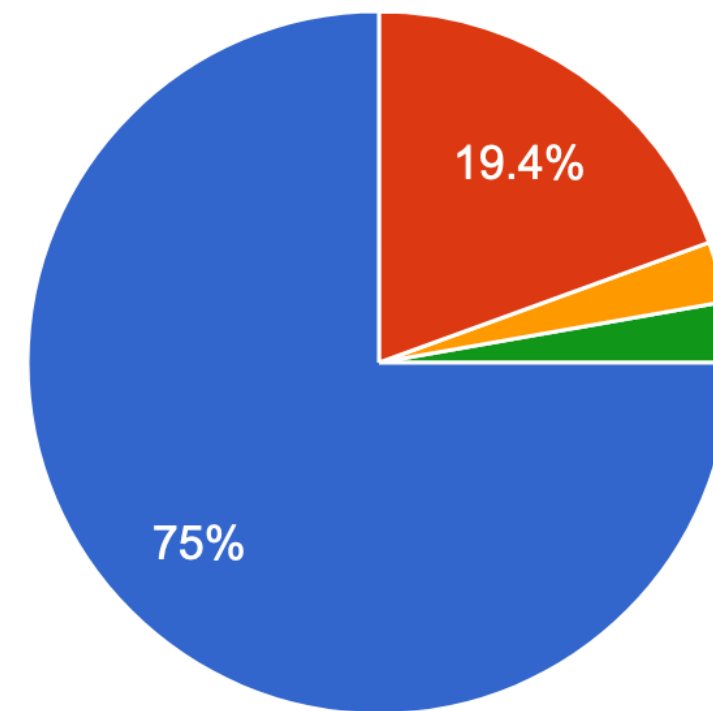
Tell me about your CERN presence:
36 responses



Some general stats

Are you a CERN user?

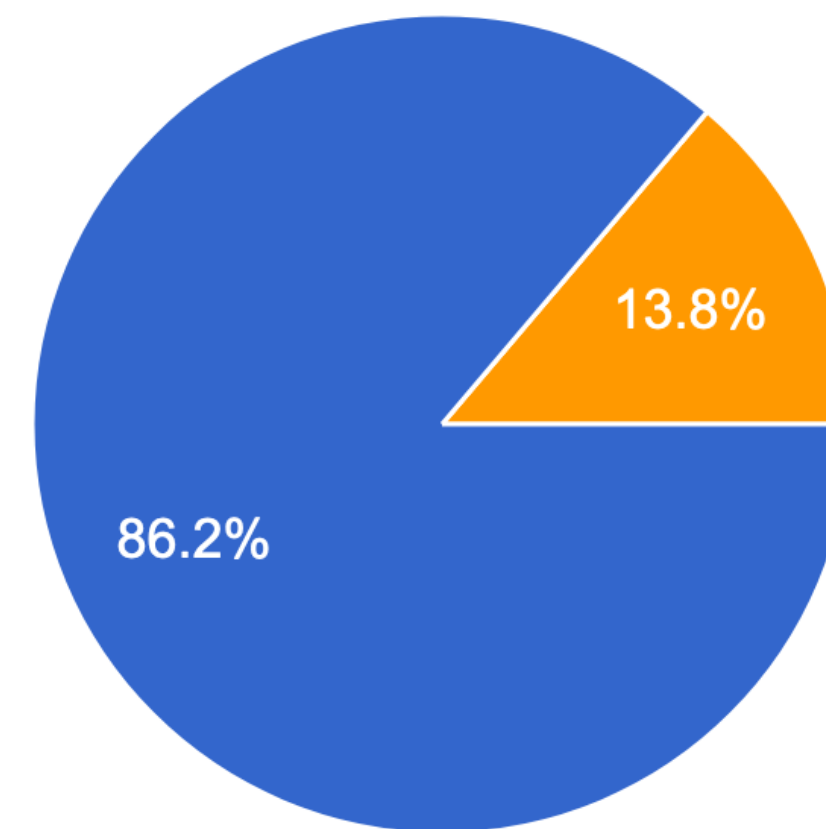
36 responses



- yes
- no
- Soon to be (experiment approved but not started)
- Project associate

Does your health insurance cover you at CERN?

29 responses



4 people, only one going to CERN

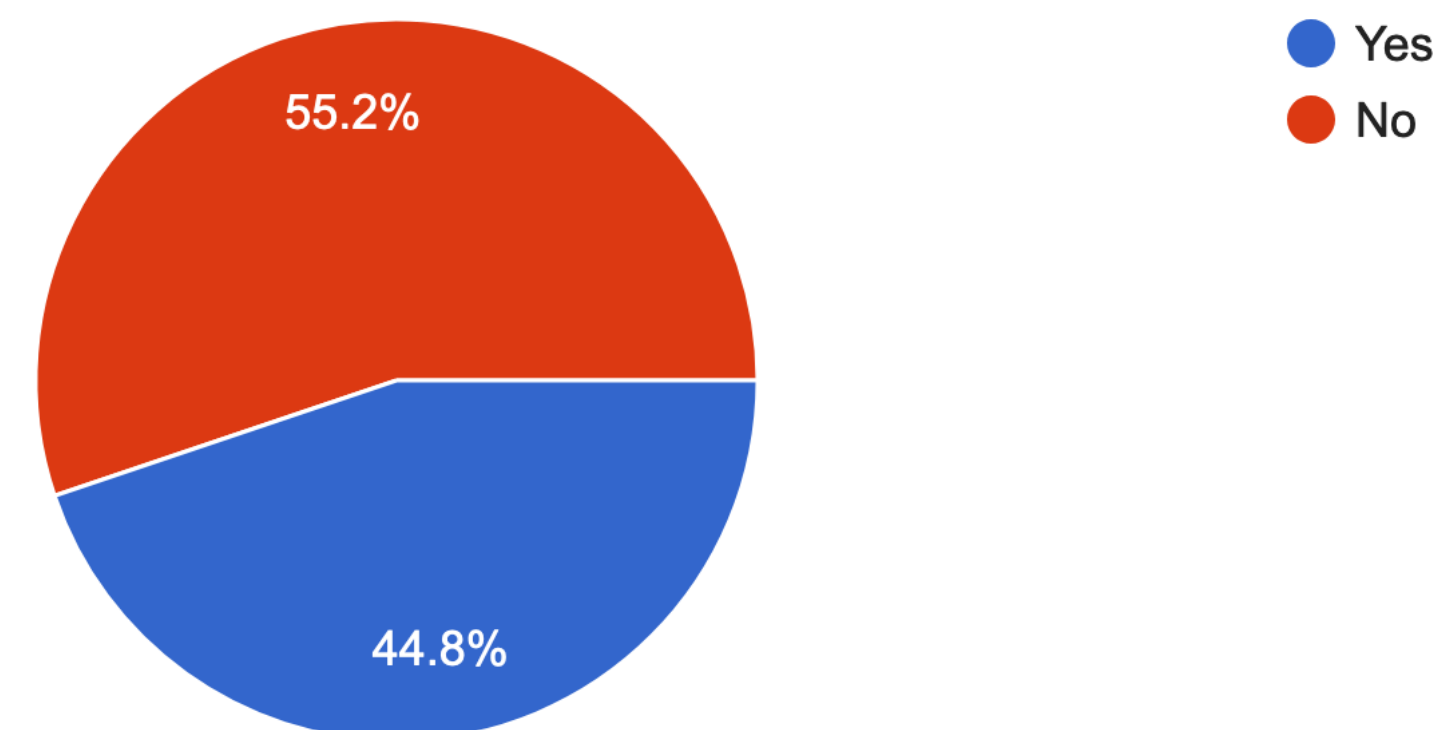
Do check with your institution about this!

How do we live at and get to CERN?

- Most people stay at the hostel (or similar)
 - Calls for better accommodations for longer-term (**a point to work on**)
- In terms of transport, it is well balanced between car users (either personal, rented, shared), and bike riders, followed by walk/public transport

Do you use the CERN Mobility options (parking, shared vehicles, shuttles...)?

29 responses



Things you care about

- Food: [We want the same as all other countries](#)
 - Opening hours of the restaurants → this was covid-affected, should be fine now
 - More vegan/vegetarian options → work ongoing
 - More food options → under discussion
 - More space in the restaurants
- Office space [Will be followed up in upcoming meetings](#)
 - Better furniture
 - Better offices (better ventilation)
- Mobility
 - Nothing new wrt to previous report
- Other: [Will be followed up in upcoming meetings](#)
 - CO2 meters in the meeting rooms

What's next?

- Two more meetings this year
 - Let me know any topic you want us to discuss
 - Or just reach out to discuss with me any user-related issues!
- New survey! 2022 edition!
 - <https://forms.gle/ogcBfugkckNw27H6A>

