



PicoPET--An advanced data acquisition architecture for PET imaging

Presented by: Zhixiang Zhao¹

Zhixiang Zhao¹, Jingwei Yang², Jingwu Yang², Tengjie Sui², Siwei Xie², Zhipeng Song², Qiu Huang¹, Jianfeng Xu² and Qiyu Peng^{3*} (qiyupeng@gmail.com)

¹ *Shanghai Jiaotong University, Shanghai, China*

² *Huazhong University of Science and Technology, Wuhan, China*

³ *Lawrence Berkeley National Laboratory, Berkeley, CA, USA*

October 23, 2020

Outline

1

Introduction

2

PicoPET architecture and implementation

3

PETs constructed with PicoPET

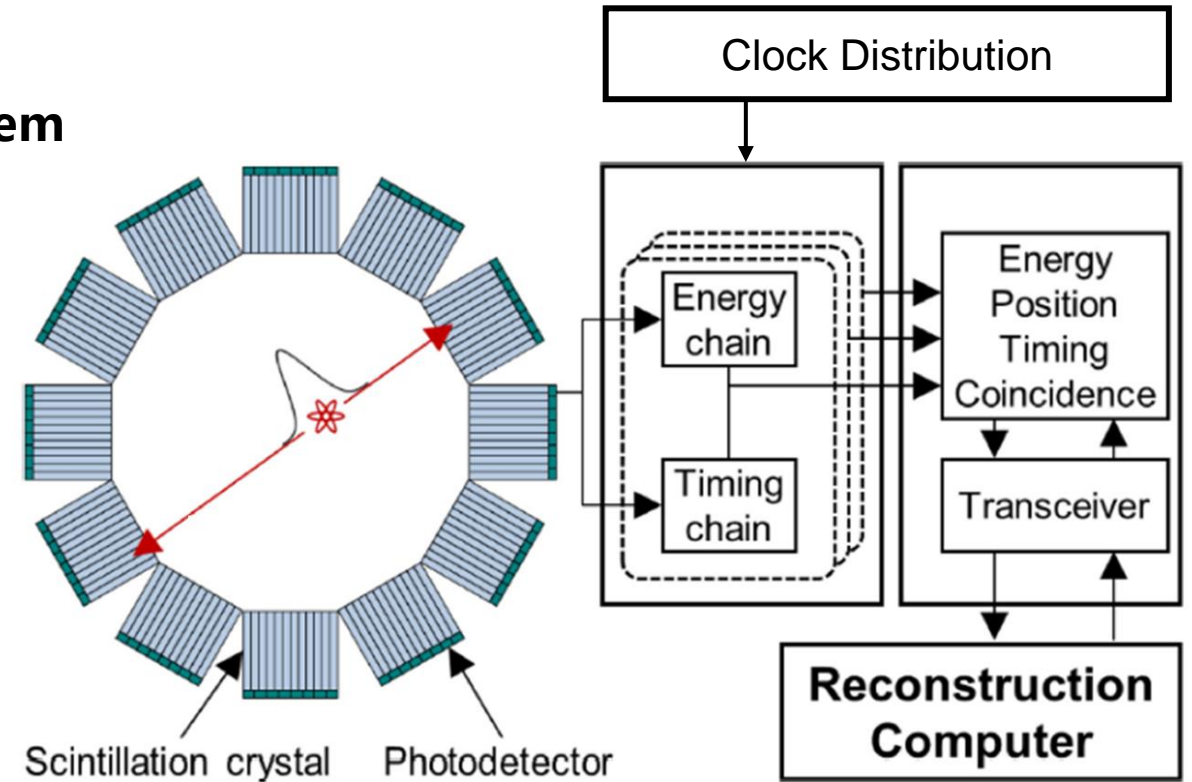
4

Conclusions and on-going works

Introduction

➤ Positron Emission Tomography (PET) system

- Detectors
- Readout electronics
(energy, timing, crystal decoding)
- Clock distribution and synchronization
- Coincidence processor
- Image reconstruction

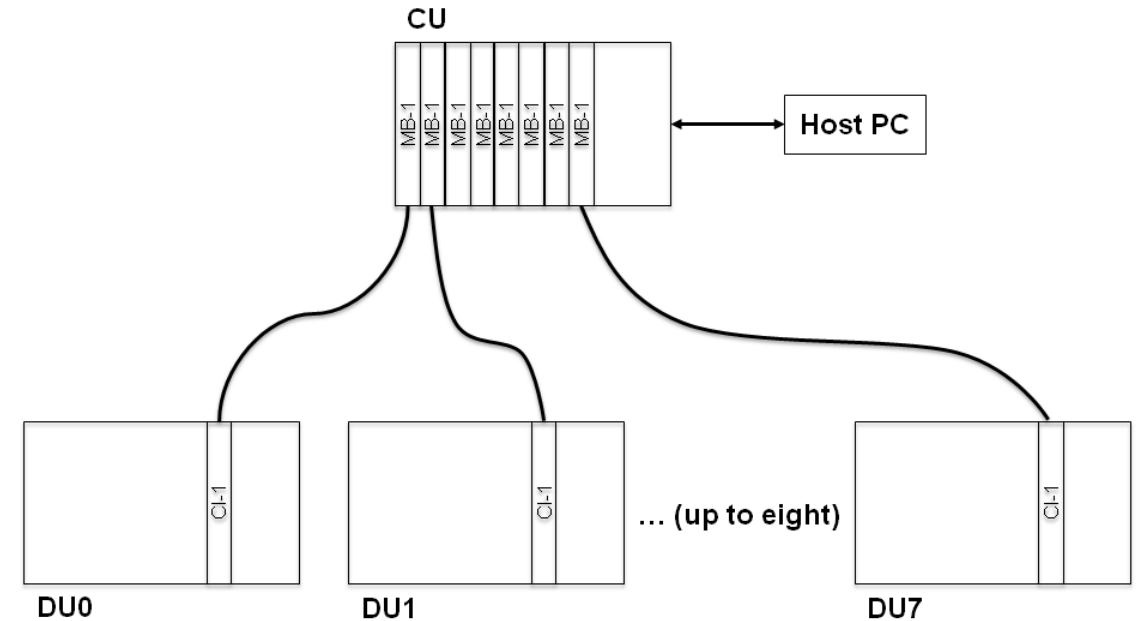


Positron Emission Tomography (PET) system

Introduction

➤ Conventional OpenPET architecture

- Open source architecture developed by LBNL
- Tree topology
- Detector unit (8 detector boards, 128 channels)
- Coincidence unit (supports up to 8 detector units)
- Host PC (system configuration and image reconstruction)

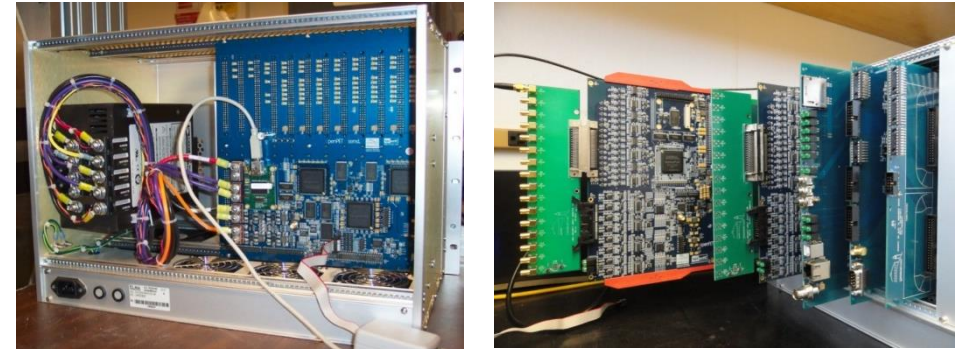


Conventional OpenPET architecture

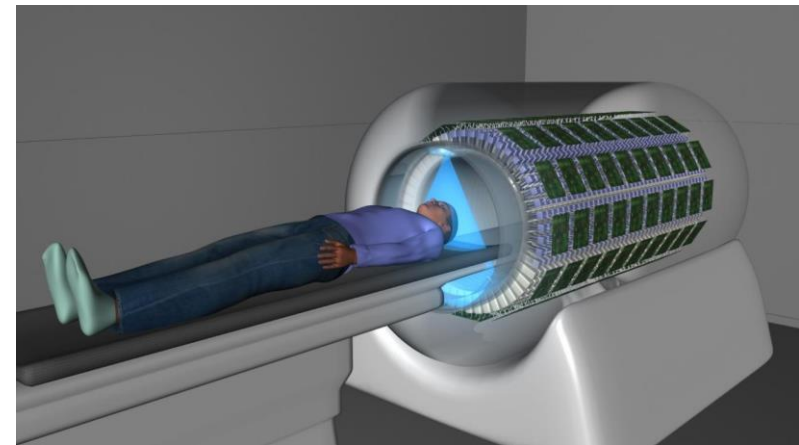
Introduction

➤ Limitation of the OpenPET architecture

- Expensive (~\$ 30k for 128-ch detector unit)
- Bulky (detector unit: 30 cm x 30 cm x 44 cm in size)
- Power hungry (> 100 W per 128 chs)
- Mainly for PMTs (Not support SiPMs)
- Limited performance (~125ps TDC)
- Not suitable for very large PET systems (e.g. 2-meter explorer PET system)



OpenPET Hardware



2-meter PET system

Outline

1

Introduction

2

PicoPET architecture and implementation

3

PETs constructed with PicoPET

4

Conclusions and on-going works

Our strategies to overcome the challenges

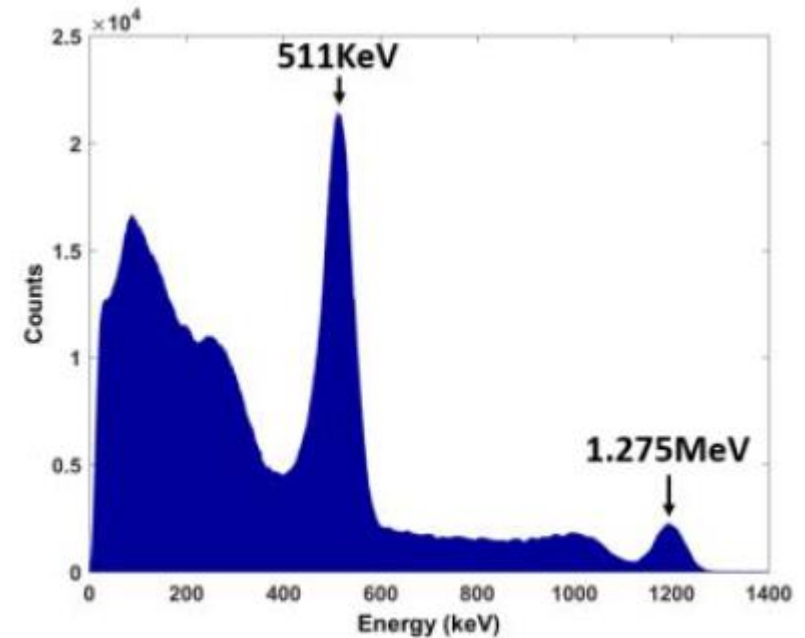
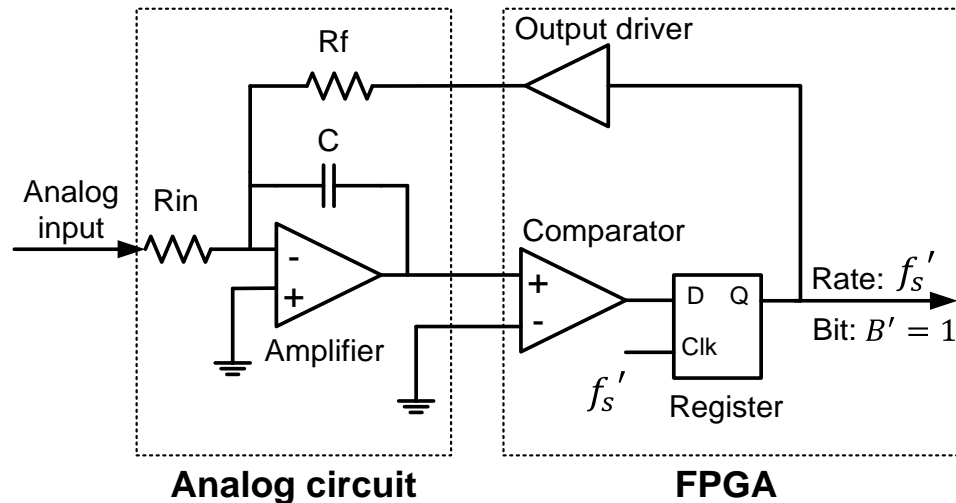
➤ **Challenges**

- Low-cost, compact, low power consumption
- Support different detectors (PMTs and SiPMs from different vendors)
- High performance (10ps timing resolution)
- Scalable for very large PET systems (e.g. 2-metter explorer PET system)

➤ **Our Strategies :**

- Implement almost all functions of the front-end readout (ADC, TDC etc.) in a FPGA (PicoPET module)
- A combination of tree topology and daisy-chain topology is adapted to link multiple PicoPET modules to construct PET systems.

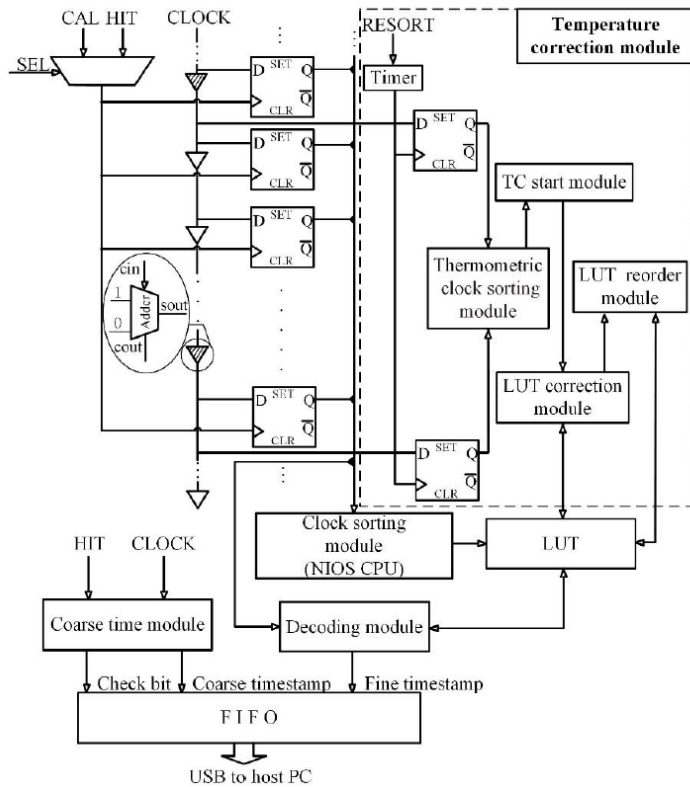
ADCs and TDCs implemented in FPGAs



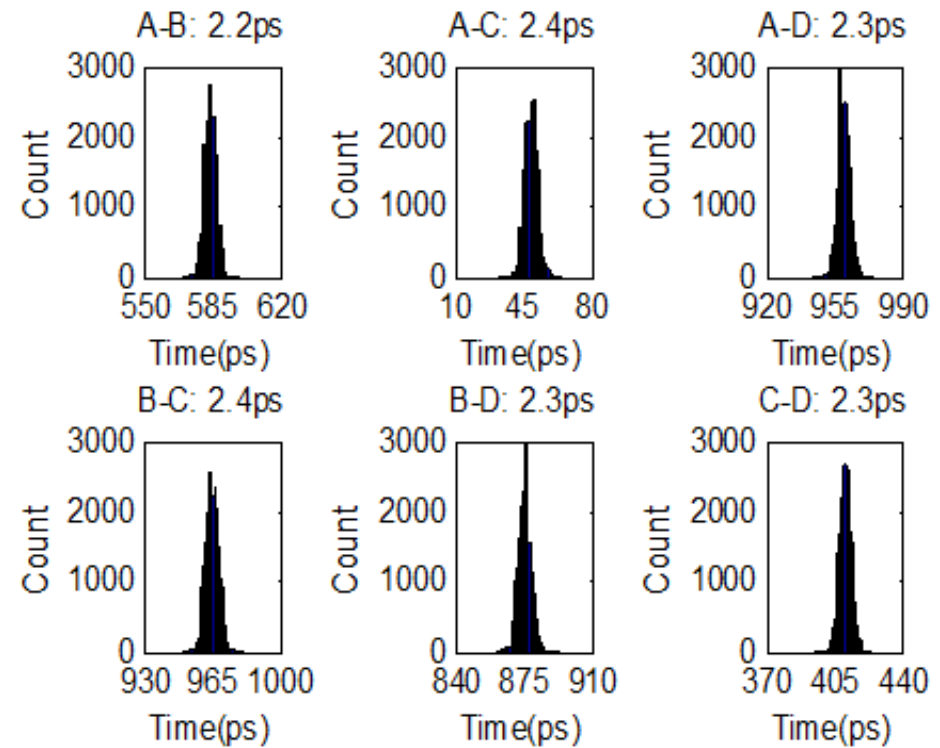
Energy: high-performance 1-order, 1-bit over-sampled delta-sigma ADC

Typical energy spectrum (^{22}Na shone on a detector constructed with LYSO and SiPM)

ADCs and TDCs implemented in FPGAs



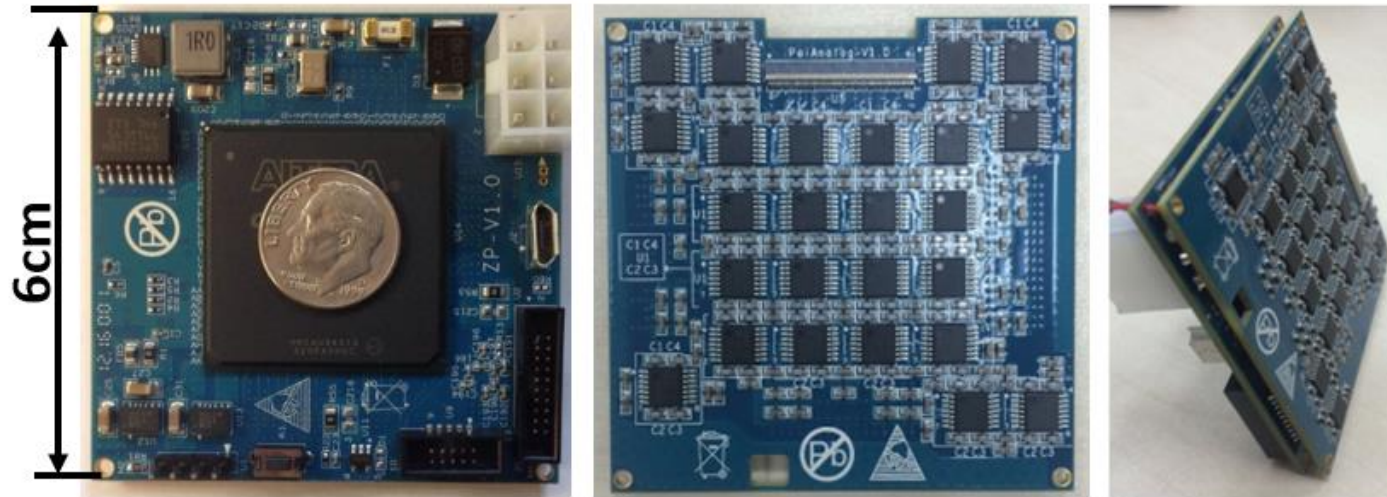
Nonuniform multiphase (NUMP)TDC implemented in a FPGA



Typical results: 2.3-ps RMS timing resolution

PicoPET FPGA modules

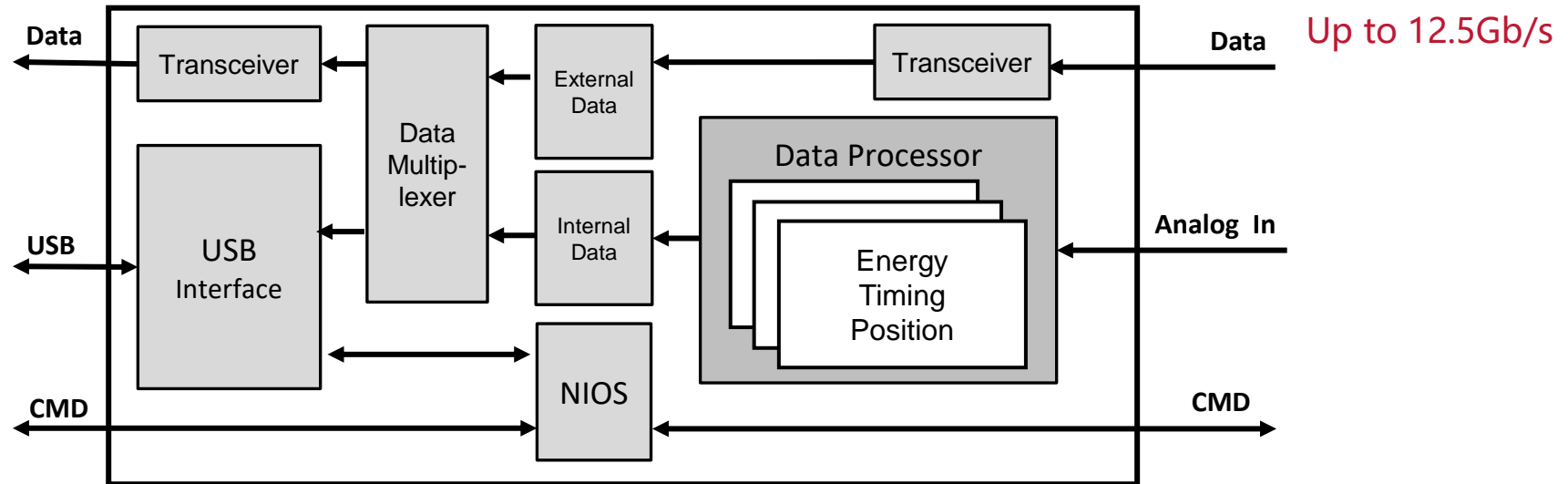
- **Features of version 1.0**
 - Read 100 individual SiPMs in parallel
 - Compact: 6 cm x 6 cm x 0.88 cm
 - Low-power consumption: 3~5 W



PicoPET FPGA modules

➤ Firmware framework

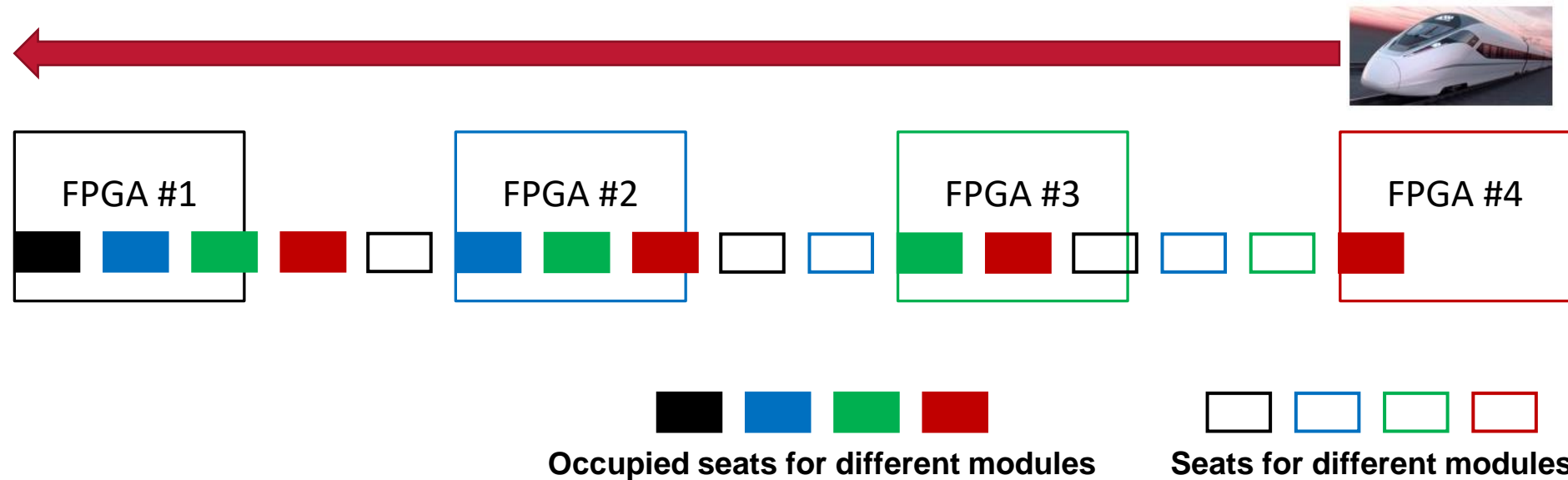
- Standalone smart module with excellent energy and timing performances
- High-speed (up to 12.5Gbs) bi-directional data streams



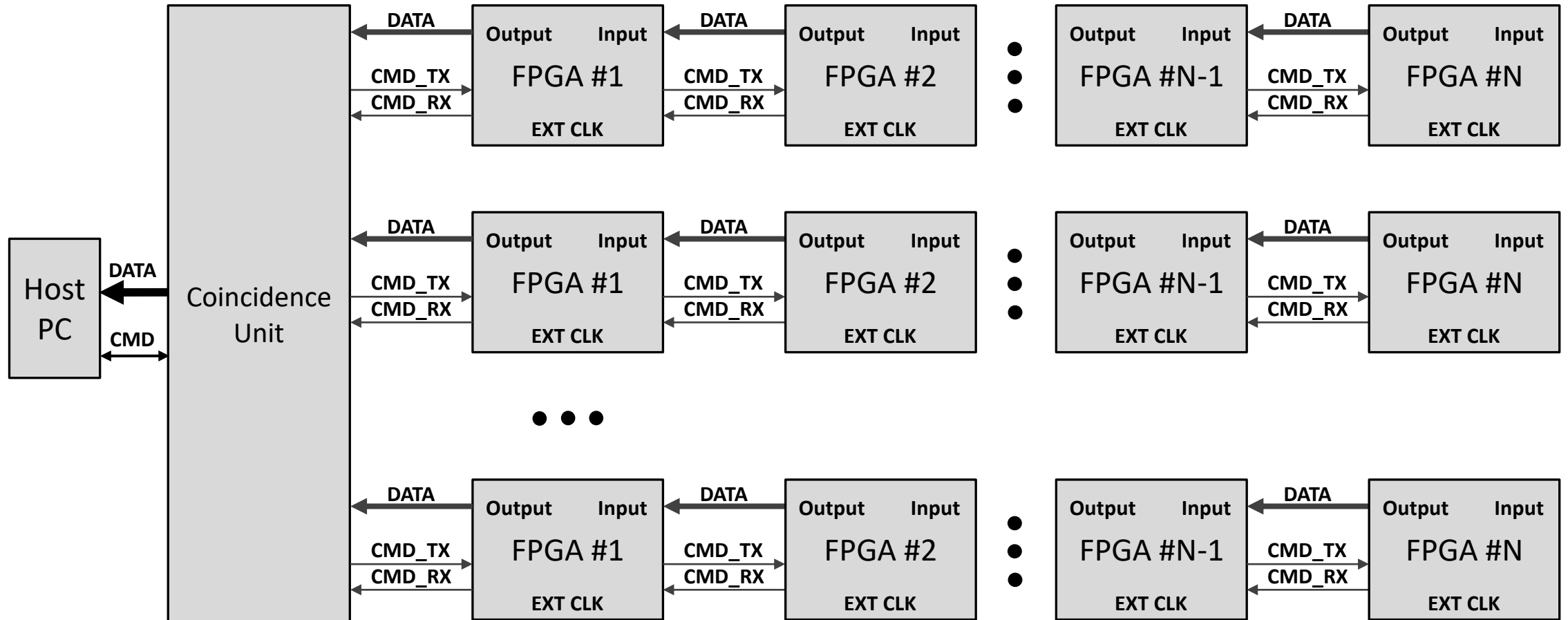
PicoPET FPGA modules linked using daisy-chain topology

- It works like a high-speed train system
 - Train stations: FPGA modules
 - Passengers: event data
 - Features: high-speed, efficiency, reliable and scalable

Schematic diagram of a 4-module daisy-chain



Combination of tree topology and daisy-chain topology



Multiple daisy-chain structure for large system

Outline

1

Introduction

2

PicoPET architecture and implementation

3

PETs constructed with PicoPET

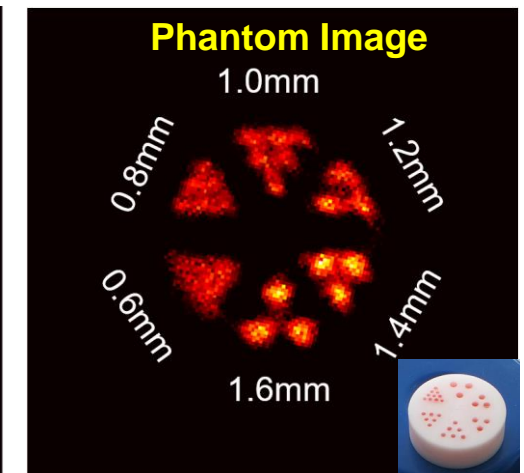
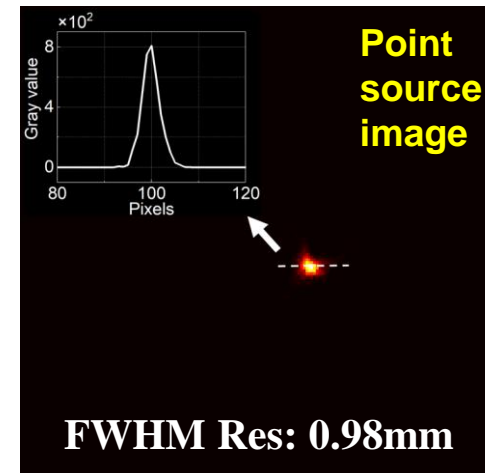
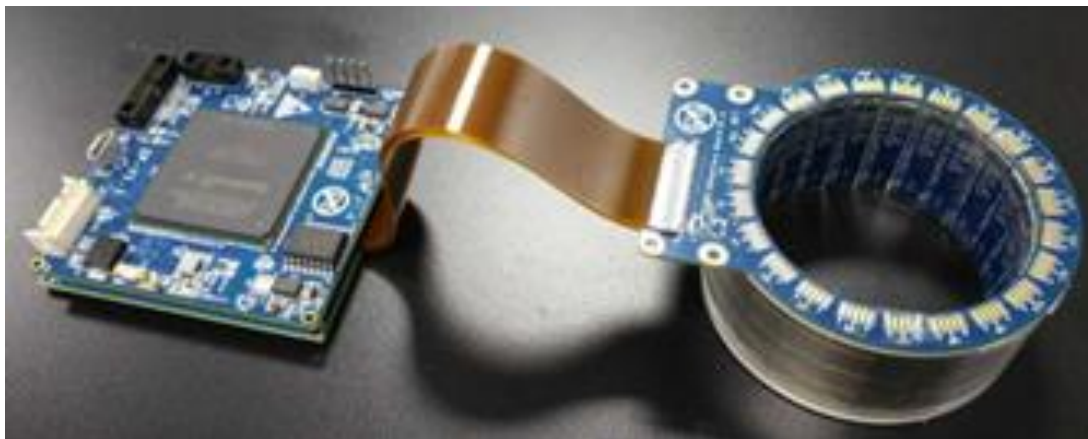
4

Conclusions and on-going works

A system with a single PicoPET FPGA module

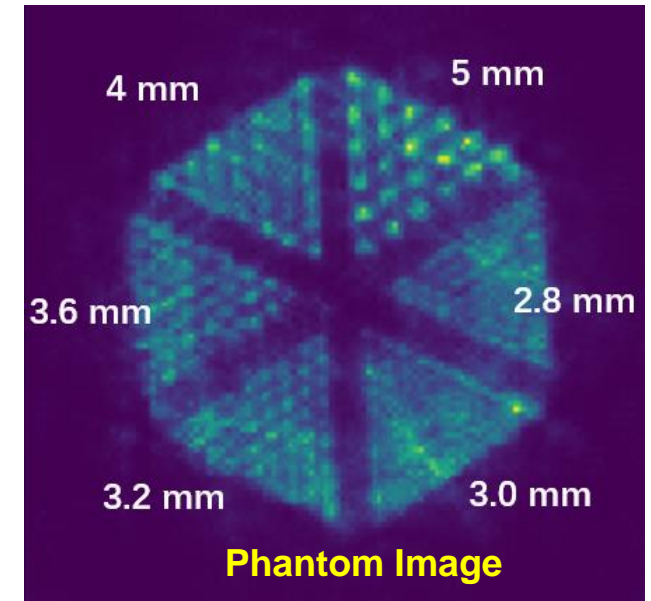
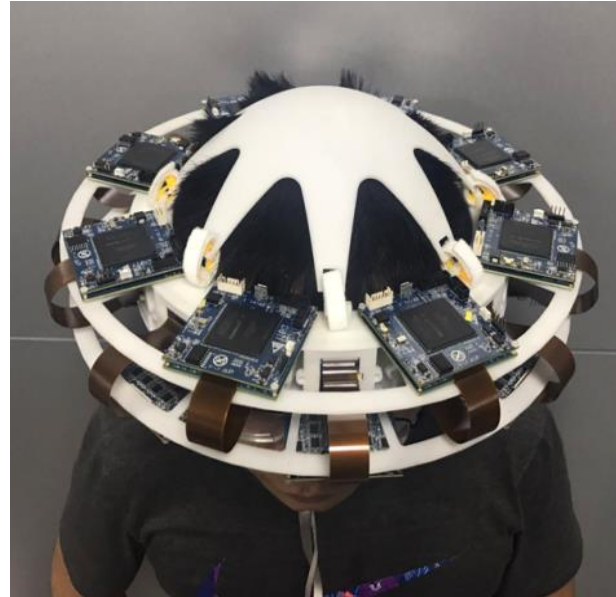
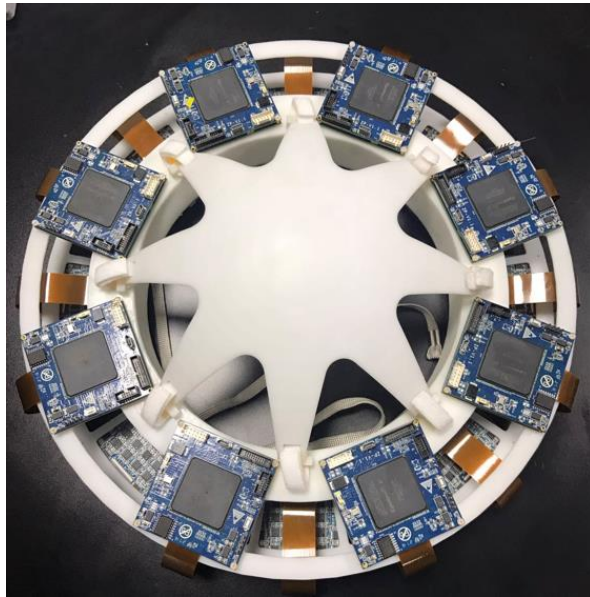
➤ A portable small animal PET imager

- A LYSO monolithic scintillator ring and 92 SiPMs
- Diameter: 48.5 mm; axial length: 25.1mm
- Weight: ~200g
- Power consumption: 5W



A system with a chain of 16 modules

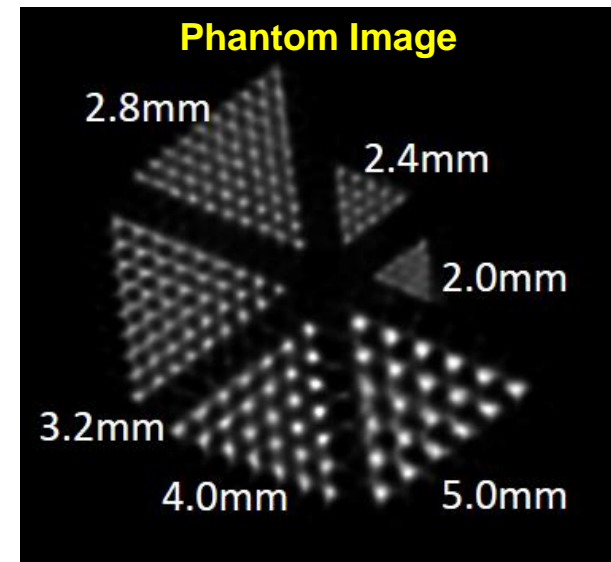
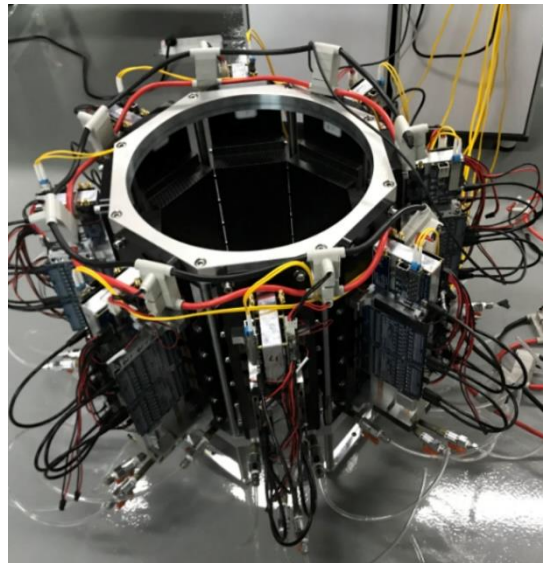
- **A wearable brain PET system**
 - Diameter: 20 cm; Axial length: 33.6 mm
 - 1600 SiPMs read by 16 PicoPET modules
 - Weight: 3.3 kg



A system with 8 chains of 4 modules

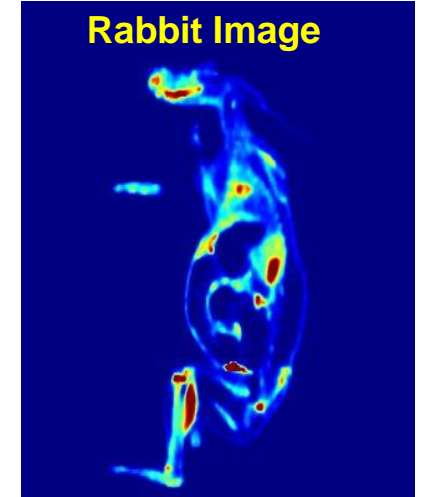
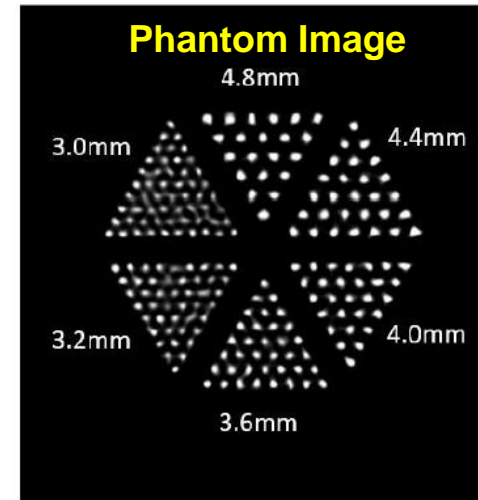
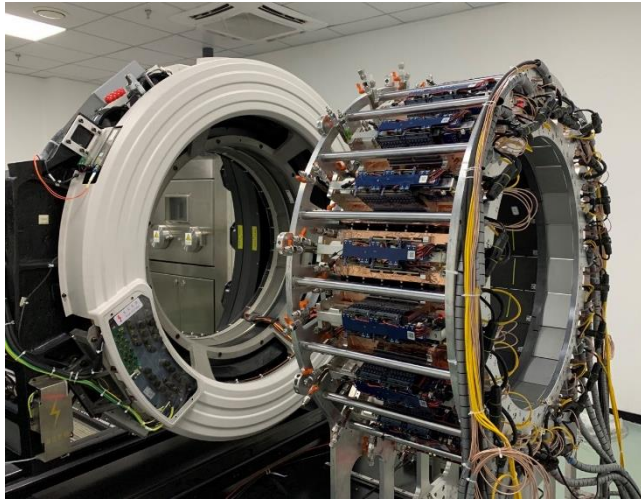
➤ **A high-performance brain PET system**

- Diameter: 30 cm; Axial length: 16 cm
- 3456 SiPMs read by 32 PicoPET modules (8 chains, 4 modules per chain)
- 247ps timing resolution



A system with 20 chains of 6 modules

- **A high-performance whole-body TOF-PET system**
 - Diameter: 80 cm; Axial length: 24 cm
 - 12960 SiPMs read by 120 PicoPET modules (20 chains, 6 modules per chain)
 - ~250ps timing resolution



Outline

1

Introduction

2

PicoPET architecture and implementation

3

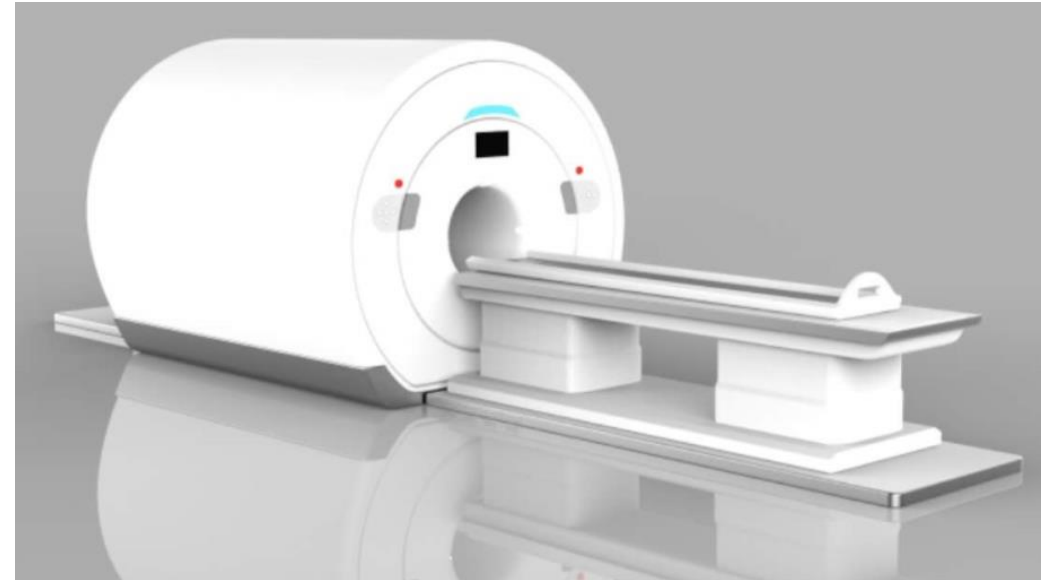
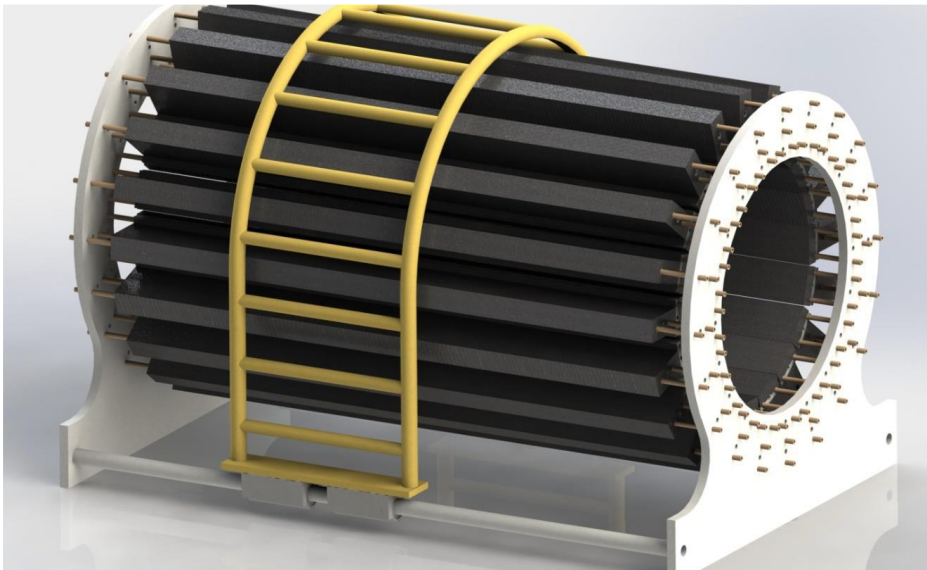
PETs constructed with PicoPET

4

Conclusions and on-going works

A system with 80 chains of 12 modules (under construction)

- **A 2-meter total-body TOF-PET system (under construction)**
 - Diameter: 80 cm; Axial length: 2 m
 - 103,680 SiPMs read by 960 PicoPET modules (80 chains, 12 modules per chain)
 - Targeted timing resolution: 250ps



Summary and conclusions

➤ **The two major features of the PicoPET electronics system are**

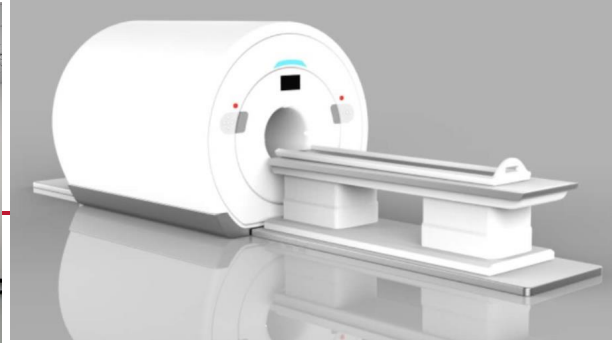
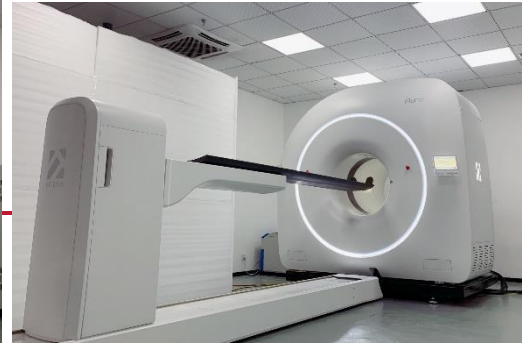
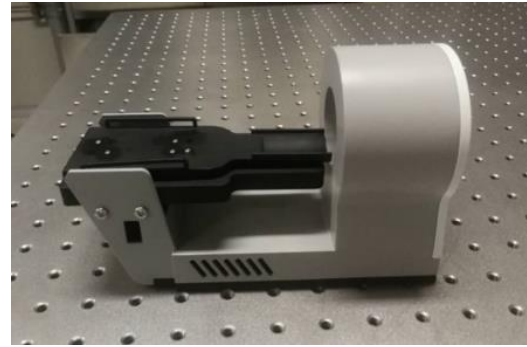
- Almost all functions of the front-end readout (ADC, TDC etc.) are implemented in a FPGA (called PicoPET module);
- A combination of tree topology and daisy-chain topology is adapted to link multiple PicoPET modules to construct PET systems with different scales.

➤ **The PicoPET have been successfully deployed in 4 PET systems.**

- The smallest system only used one PicoPET module.
- The largest system were constructed with 20 chains of 6 PicoPET modules.
- We are currently constructing a 2-meter PET system using 960 PicoPET modules (80 chains, 12 modules per chain) to read out 103,680 SiPMs.

➤ **Conclusions**

- The PicoPET is a new generation of low-cost, high-performance, compact, scalable and reliable electronics system for the development of advanced PET cameras.



Thank you!

