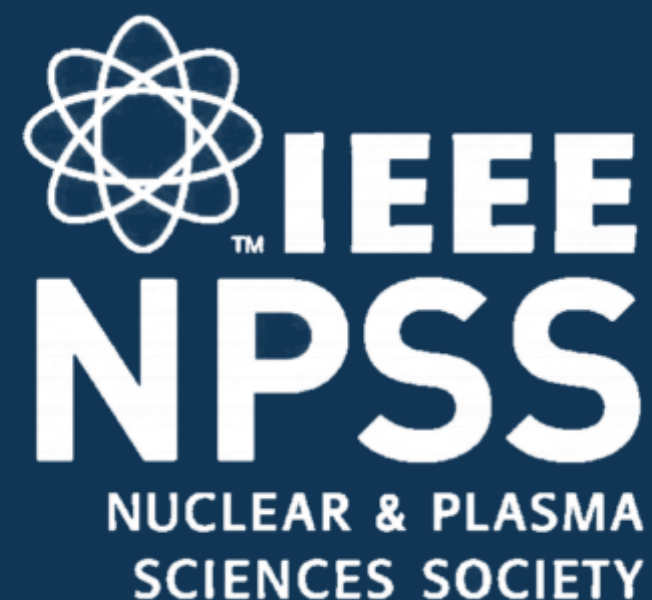


Fundamentals of PET Research using EasyPET



PRESENTED BY GROUP 8
PRESENTER:

 Hope Mogale



Meet Our Team



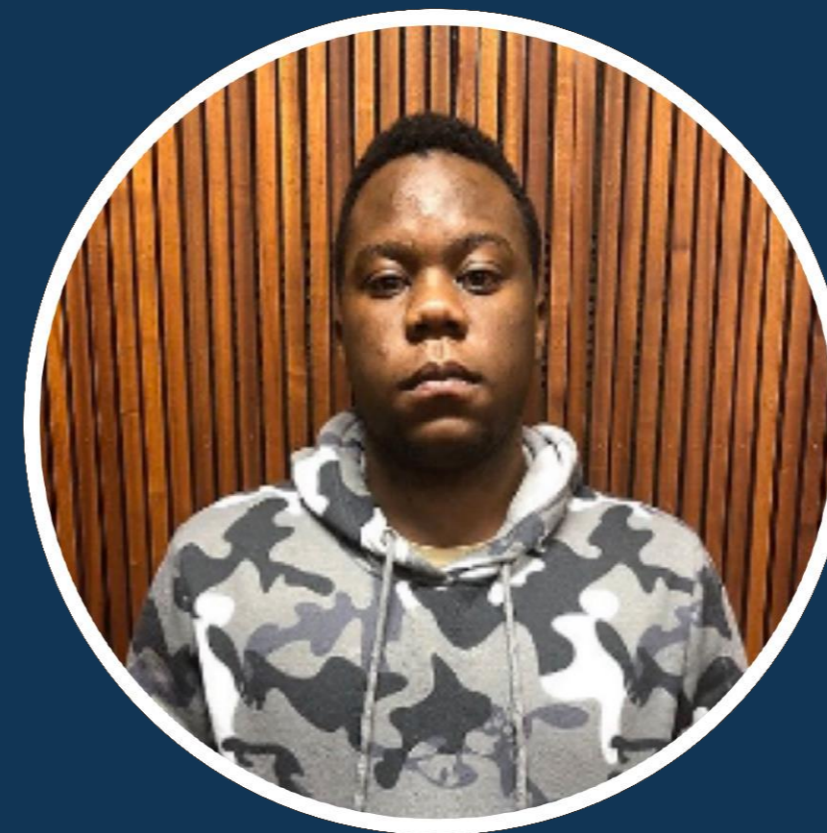
1



Khobatha



Avuyile



Thabang



Setelekoane



Nthabiseng



Theodore



Hope

Presentation Outline



2

Background of EasyPET

The main idea behind EasyPET, how it works and the value it adds to PET Research



Motivation for EasyPET

Why EasyPET? What makes it special and why is it Relevant?

Experiments using EasyPET

Demonstration of Experiment using EasyPet



Results and Discussion

Discussion of results obtained from Experimental Setup

Summary and Conclusion

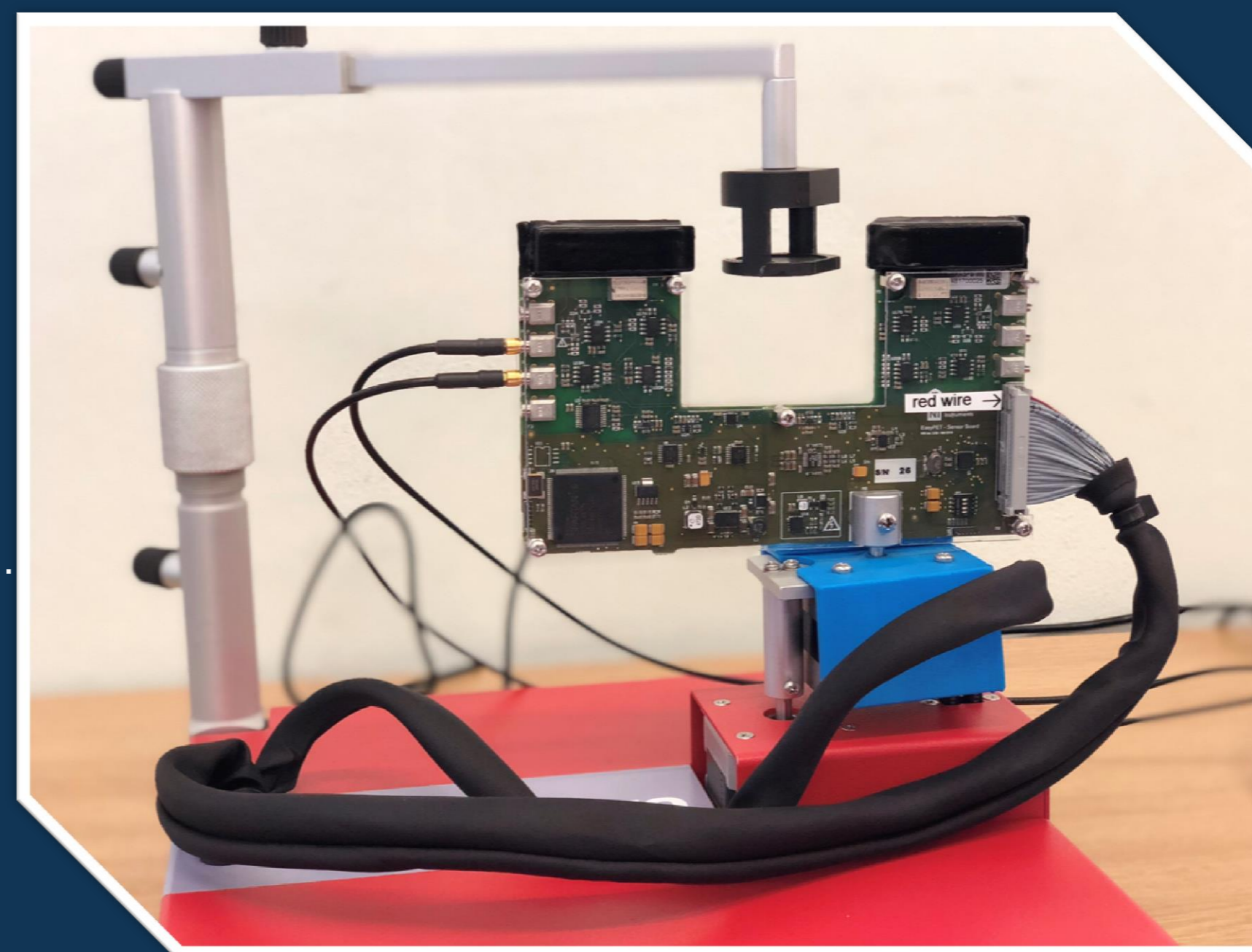
How are we going to make this solution work





Background of EasyPET

- EasyPET is a simple and affordable small dimension Positron Emission Tomography (PET) scanner
- Target is high level education for physics, engineering and nuclear medicine students
- EasyPET has simple architecture
- Quick prototyping





Motivation for EasyPET



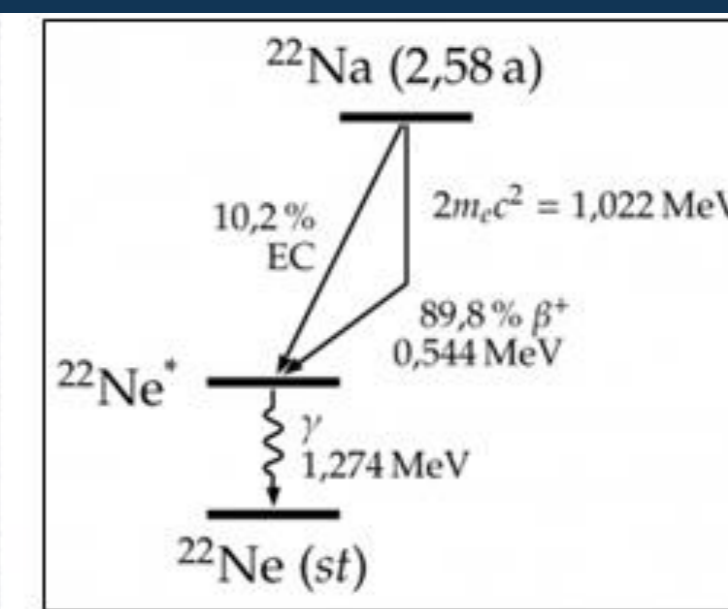
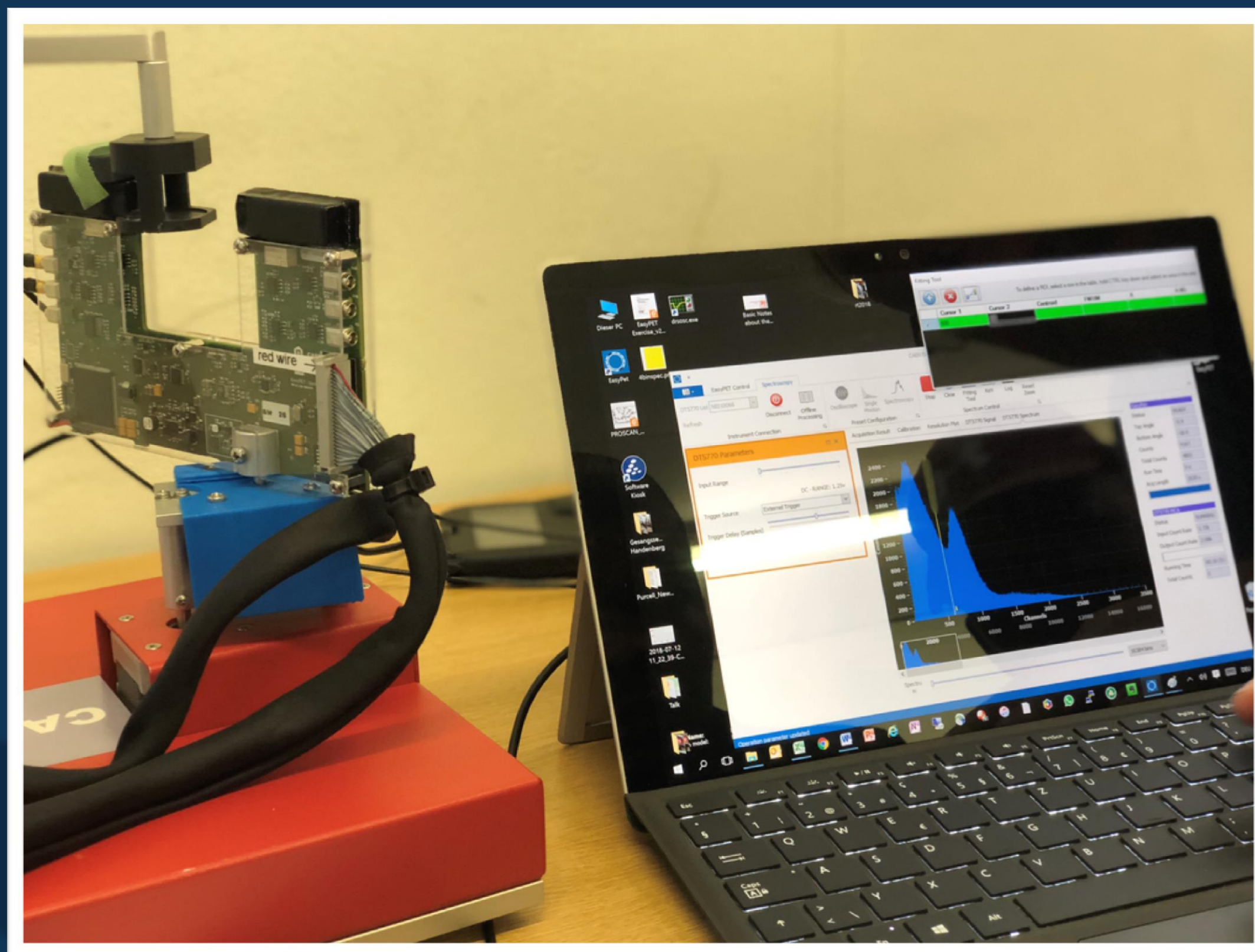
4

- EasyPET is affordable
- EasyPET is financially viable
- EasyPET can be used everywhere with Laptop and Setup
- Easy to understand
- PET Education is necessary for all

Experiment Using EasyPET



5



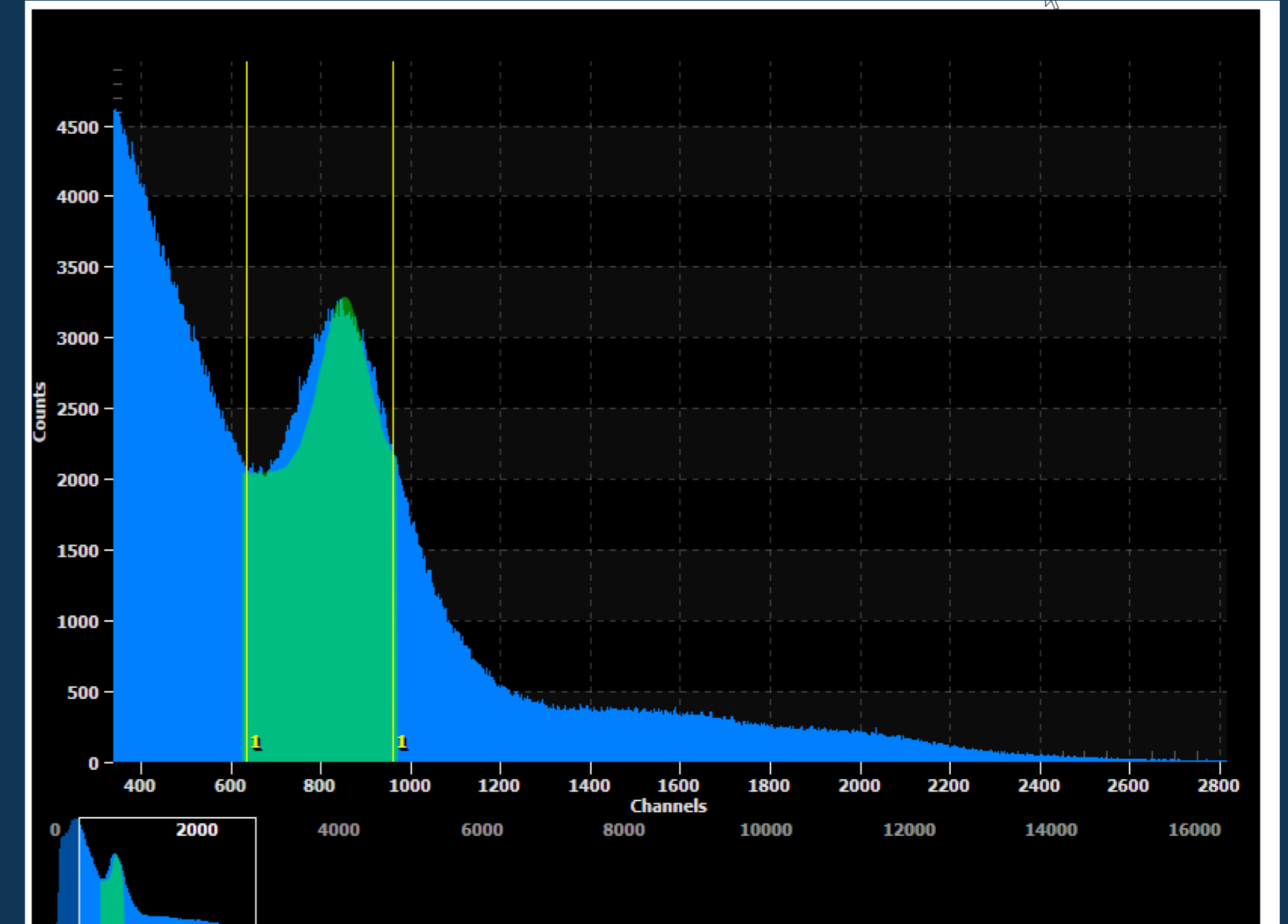
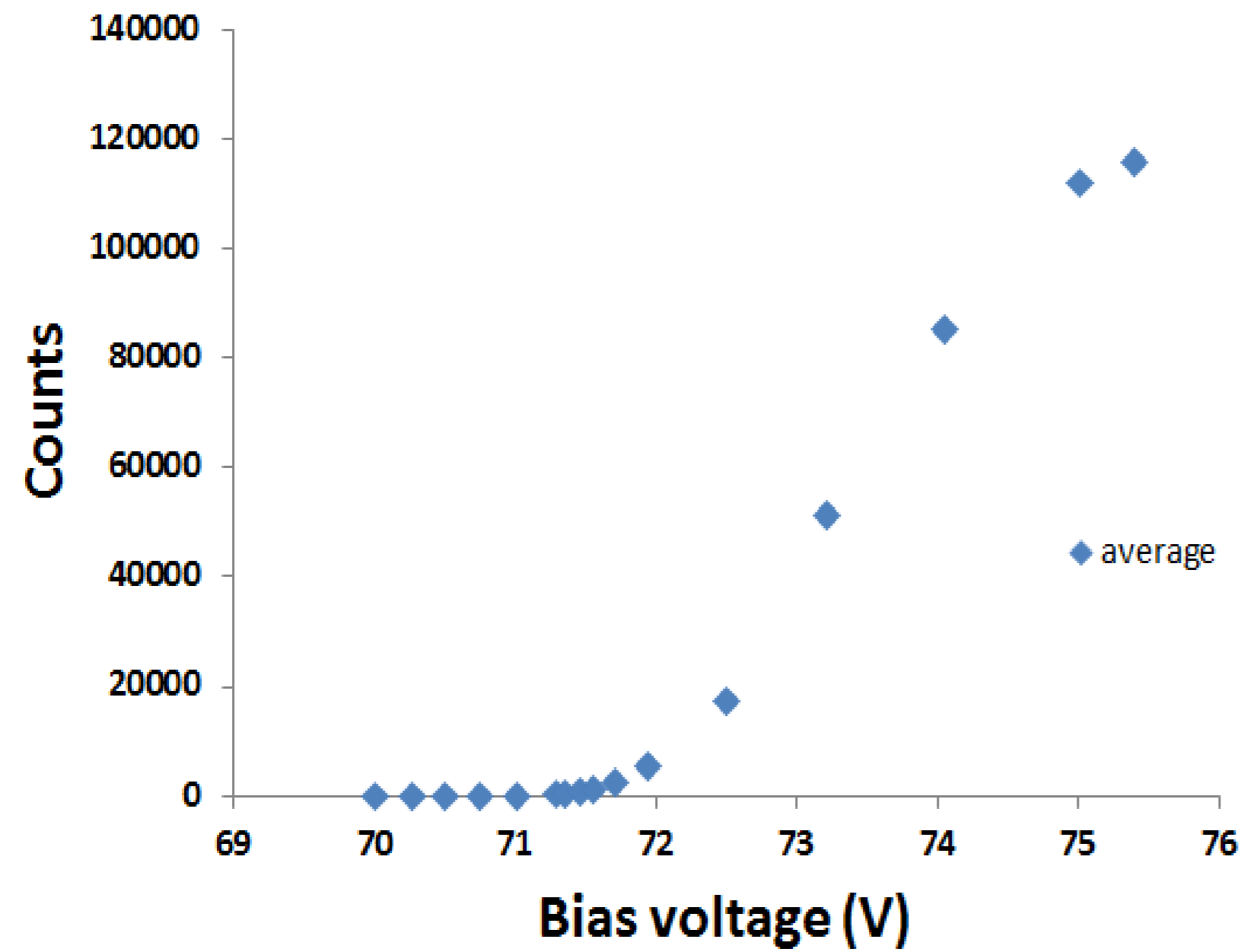


Experiment Results



6

Average Bias Voltage Growth Rate

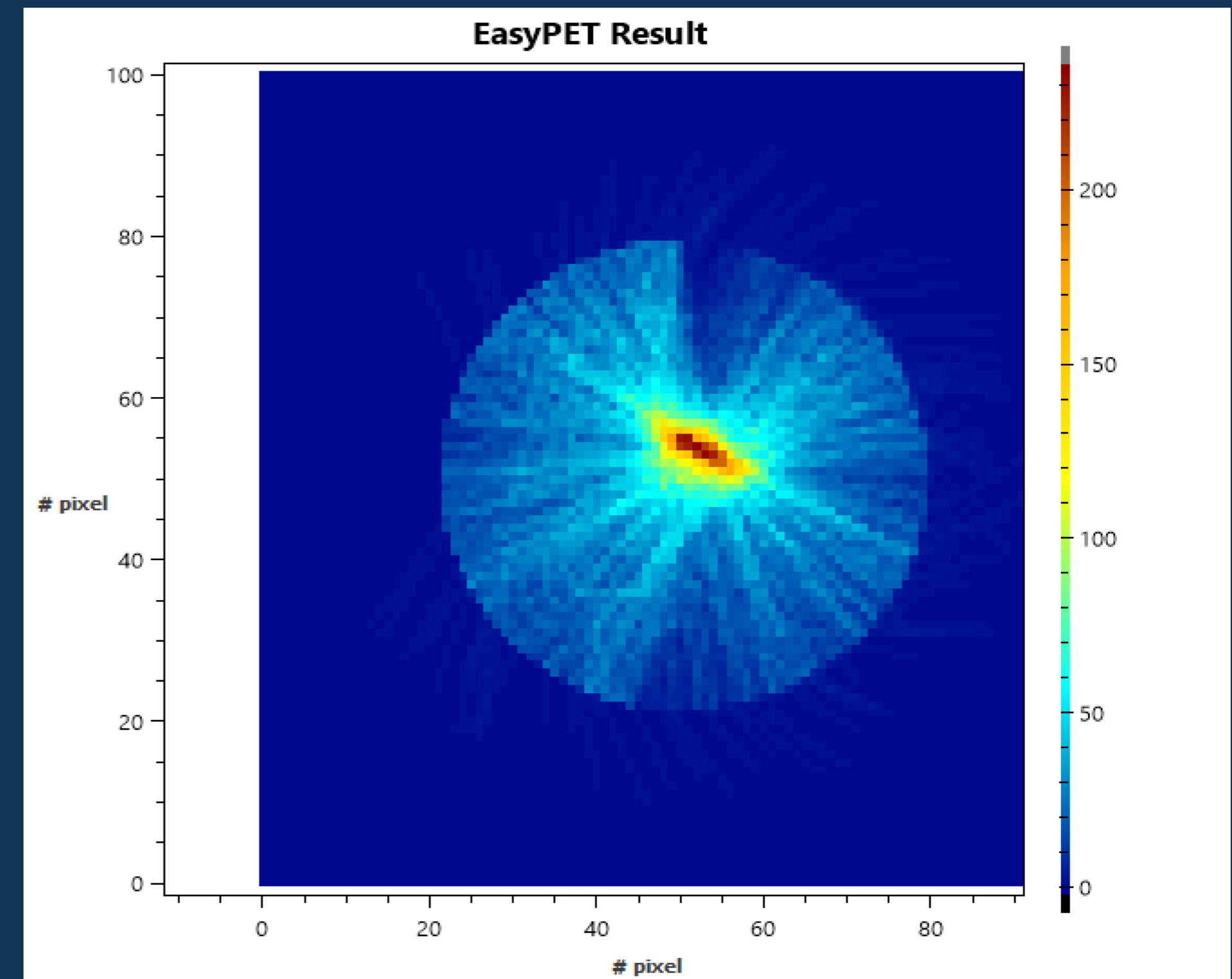
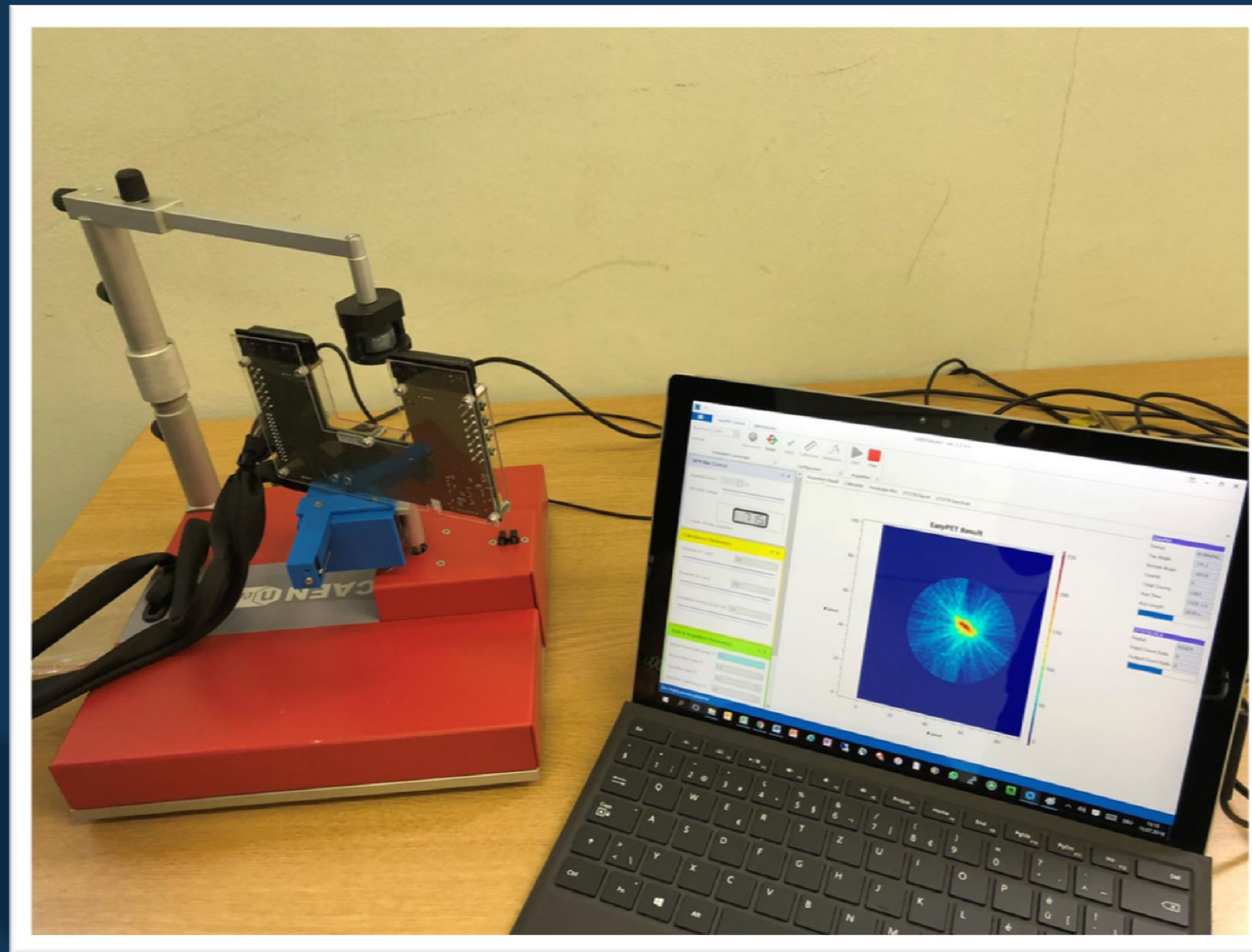


Cursor 1	Cursor 2	Centroid - Ch	FWHM - Ch (%)	A	A-BG
600	1000	868.32	146.643 (16.89)	708979	171238

Experimental Results Cont...



7





Summary & Conclusion



8

- EasyPET is affordable
- EasyPET is financially viable
- EasyPET good for small scale experiments for PET
- EasyPET is a good for teaching PET
- PET Education is necessary for students in Physics



References



9

- <https://ieeexplore.ieee.org/document/8069360/>
- <https://www.sciencedirect.com/user/chooseorg?targetURL=%2Fscience%2Farticle%2Fpii%2FS016890021630362X>
- <https://euraxess.ec.europa.eu/jobs/213734>
- http://repositorio.ul.pt/bitstream/10451/31700/1/ulfc124076_tm_Pedro_S%C3%A1.pdf



Questions???

