

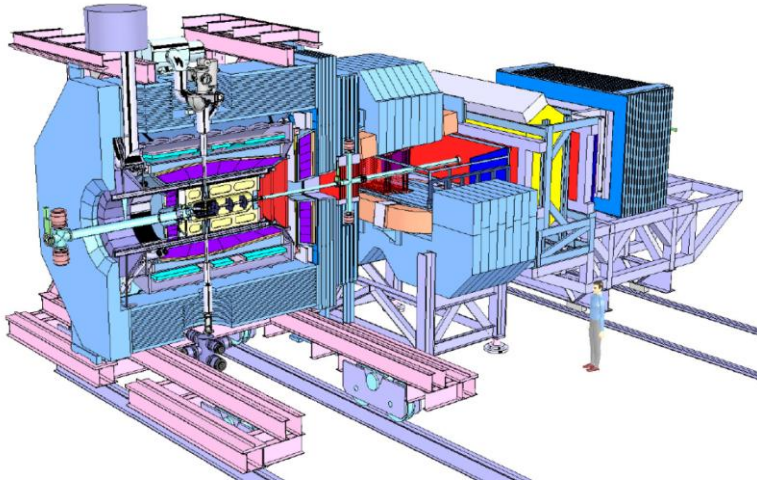
Please go to Poster # 150

FPGA online tracking algorithm for the PANDA straw tube tracker

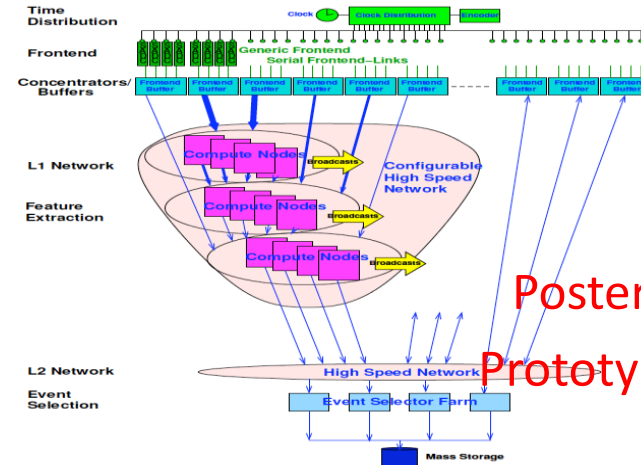
Yutie Liang, Martin Galuska, Thomas Geßler, Wolfgang Kühn,
Jens Sören Lange, David Münchow, Björn Spruck, Milan Wagner

II. Physikalisches Institut, JUSTUS-LIEBIG-UNIVERSITÄT GIESSEN

Difficult situations we are facing to

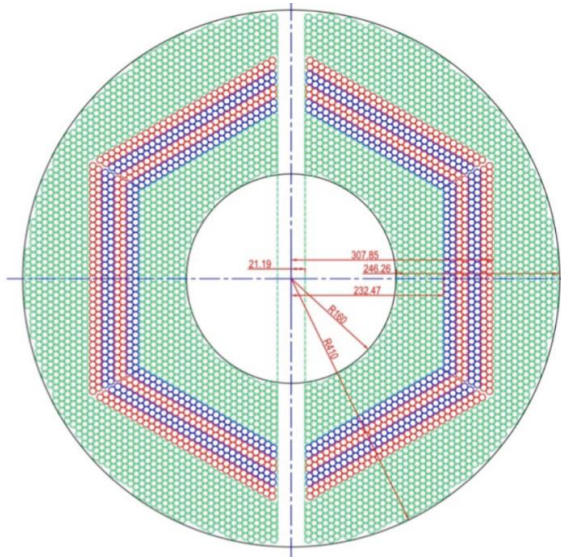


High interaction rate: 20 MHz

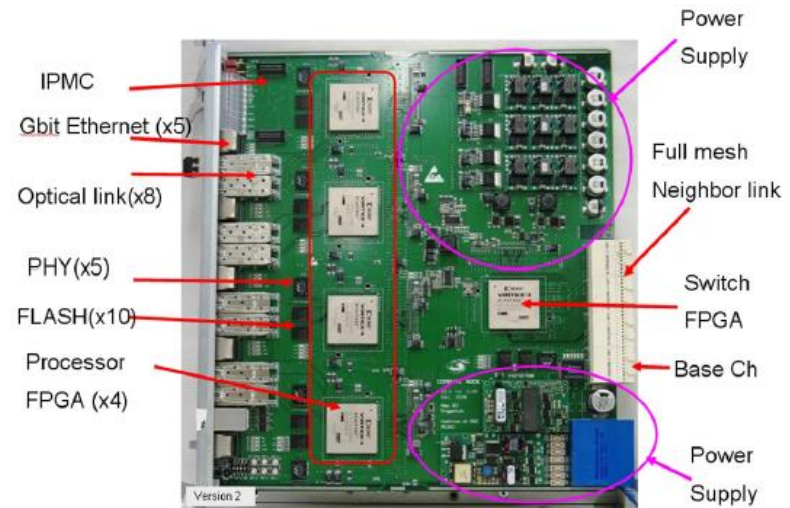


Poster #122
Prototype DAQ

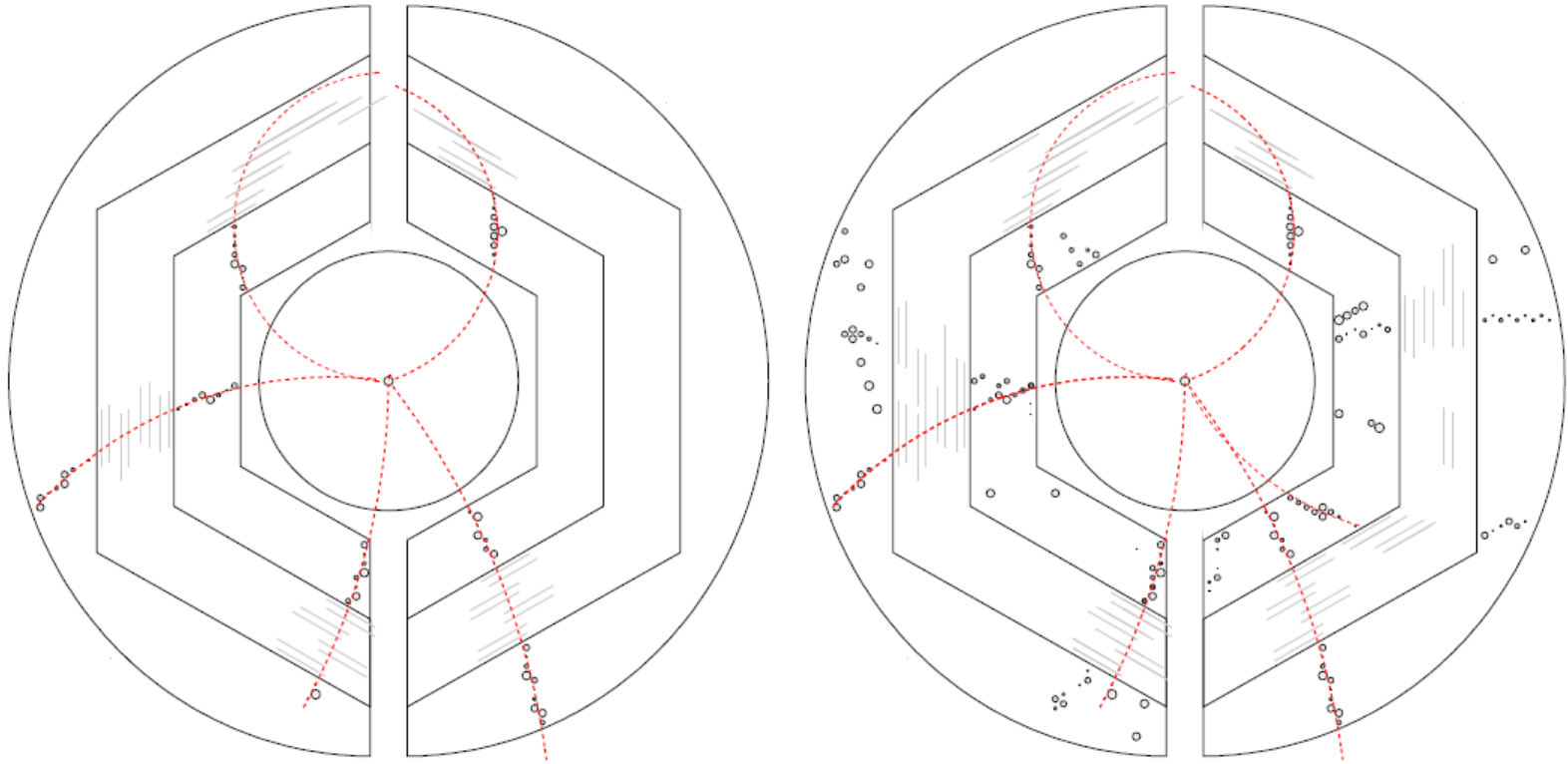
Reject factor : 1000



Straw Tube Tracker, (Slow response)



Algorithm on FPGA: track finder + track fitter



How does a track be found?

How does a helix parameter be calculated with FPGA?

How about the efficiency? resolution? speed?

Please go to Poster # 150