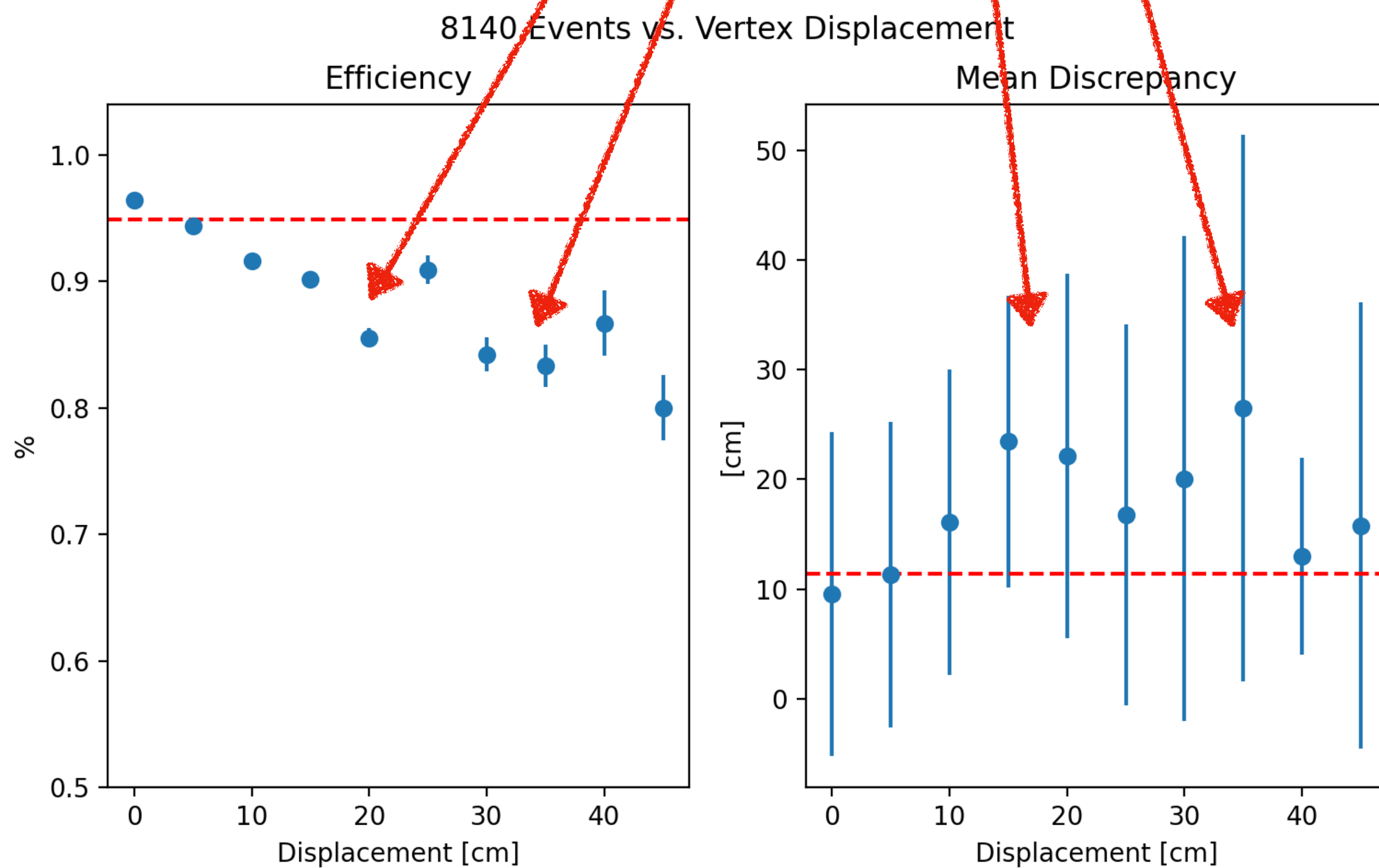


# Last time: Weird bumps in plots



- Worse performance at 15-20cm & 30-35cm
- Both in resolution and efficiency

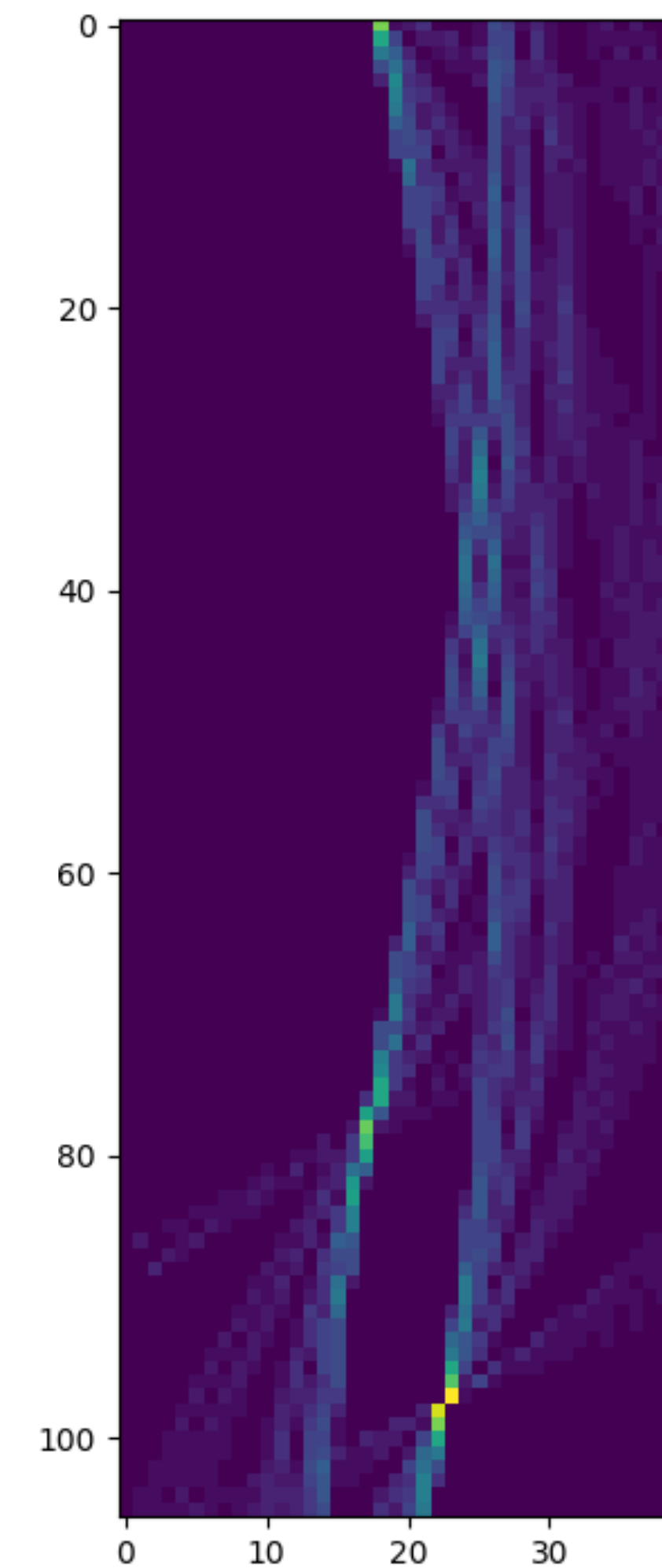
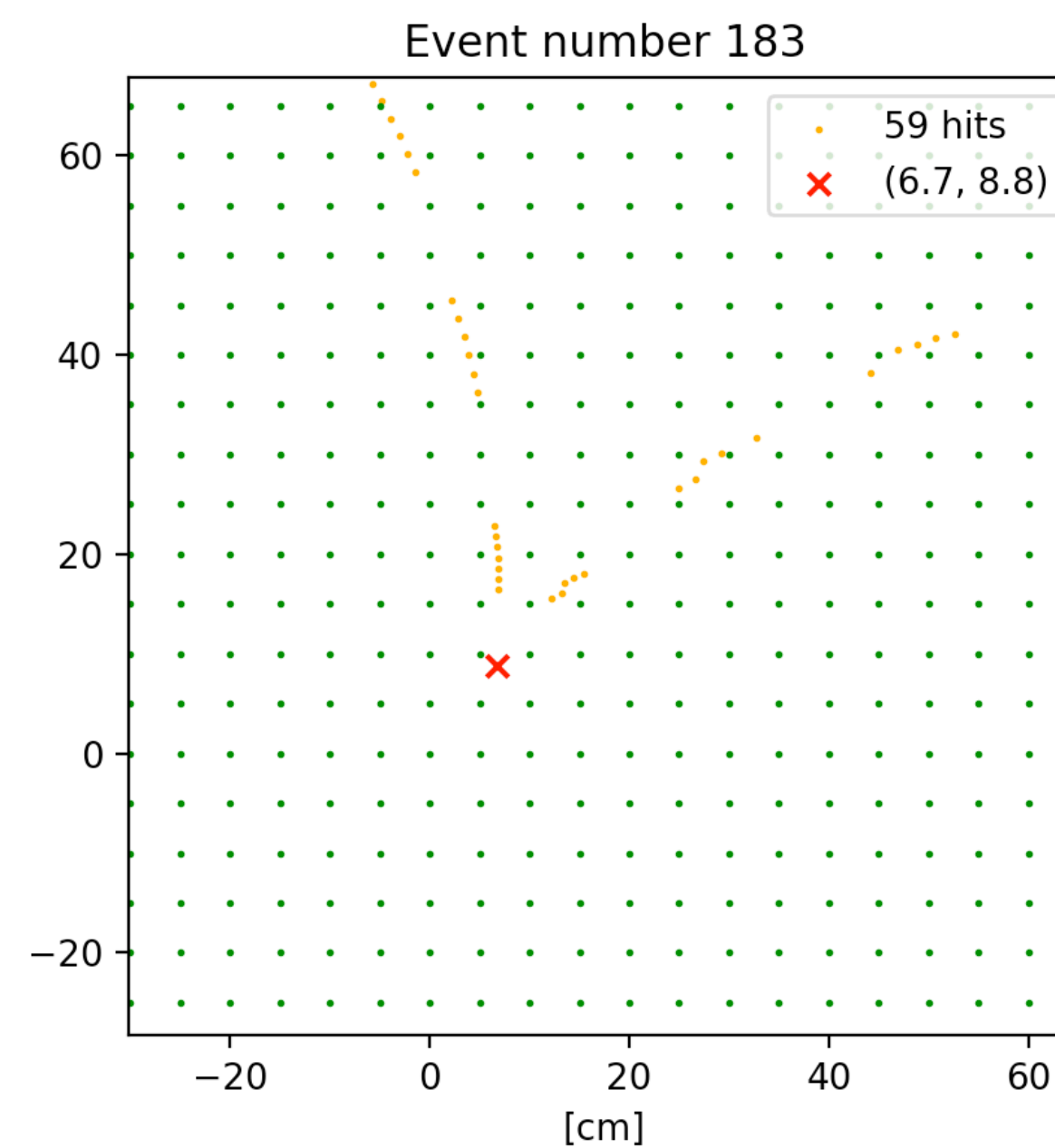
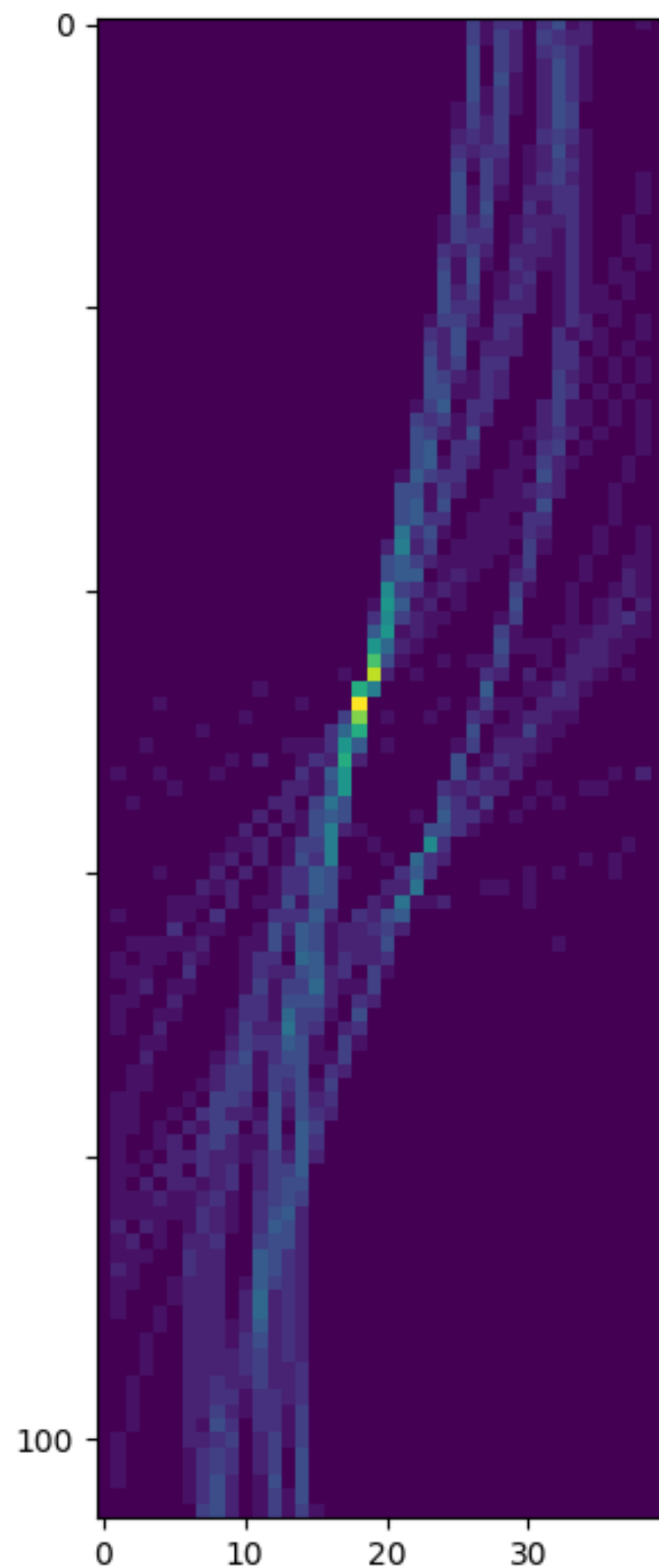
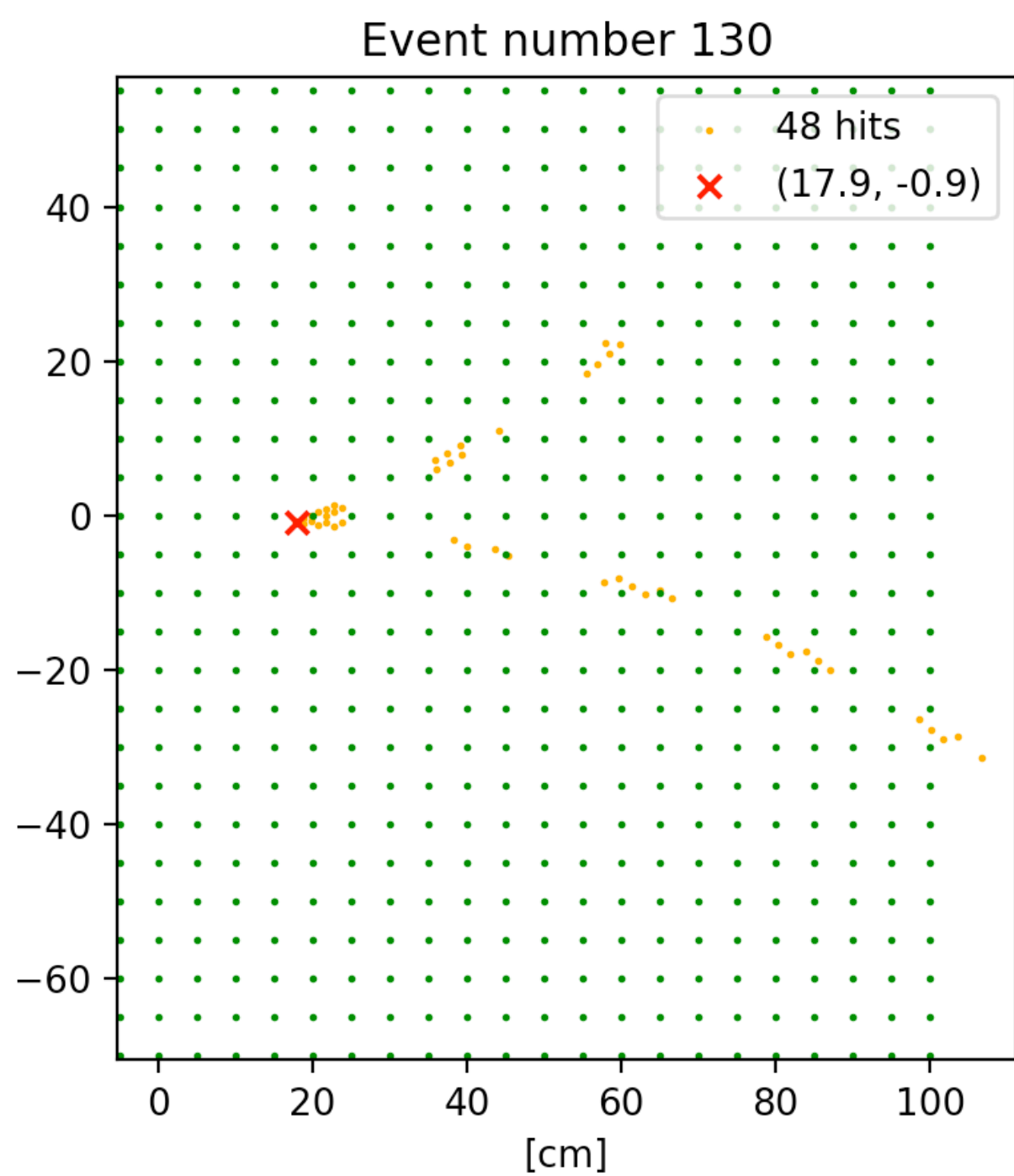
Preselection + neural



# Last time: Weird bumps in plots



- Caused by axial & stereo layers

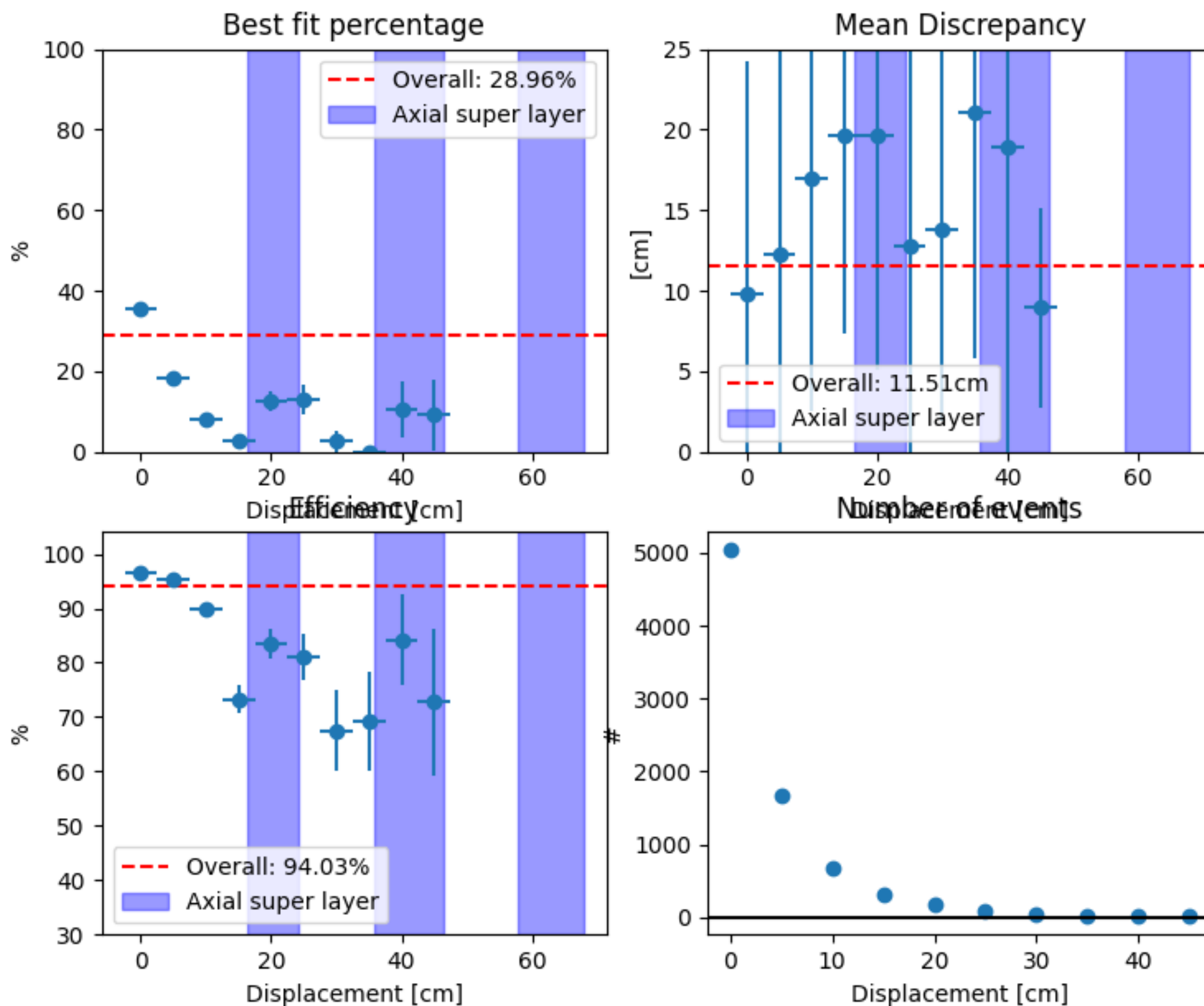




# Last time: Weird bumps in plots



8061 Events vs. Vertex Displacement



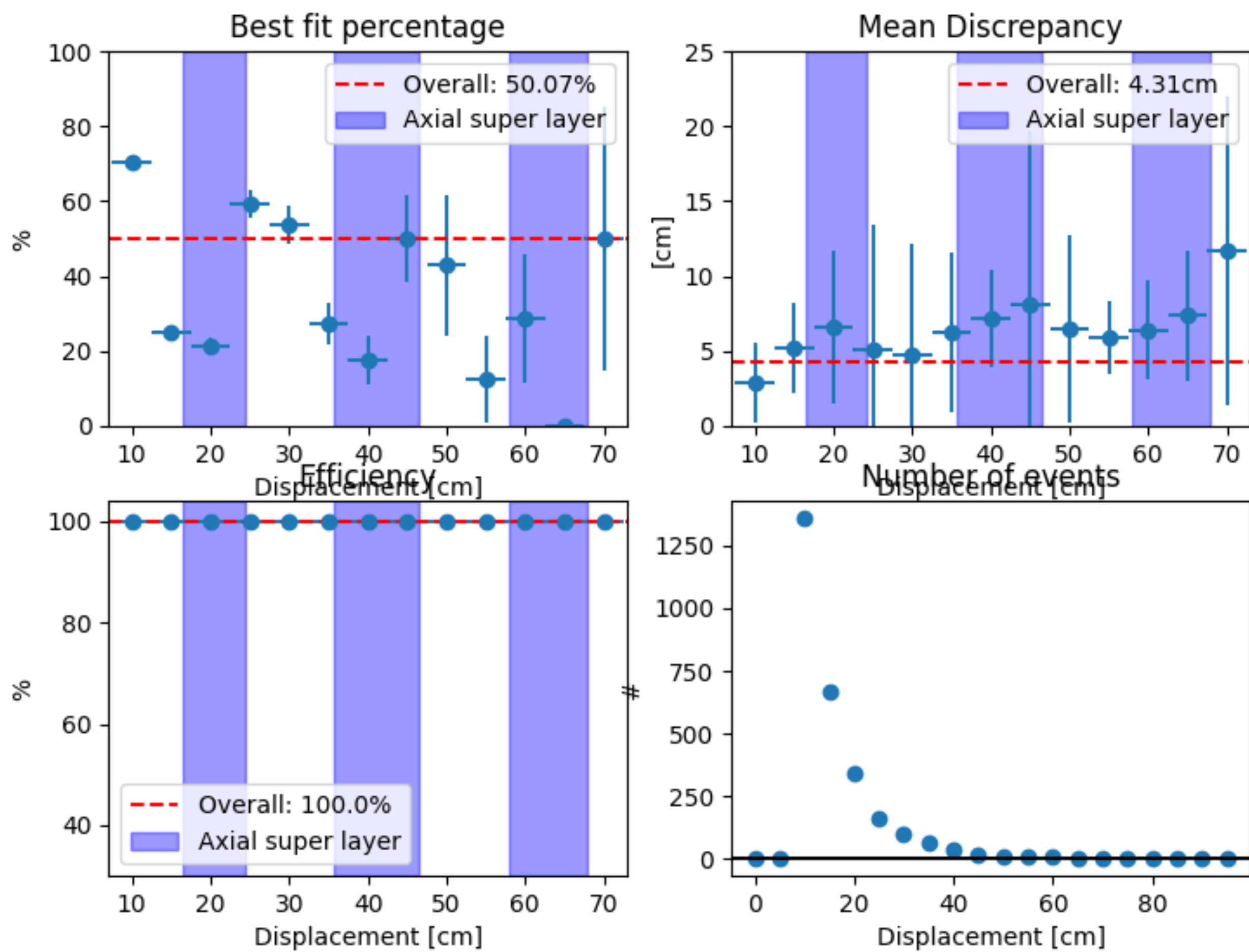
- Caused by axial & stereo layers
- Note: Small displacements skew results and make them seem better
- Exclude innermost macrocells



# Vertex preselection only



2770 Events vs. Vertex Displacement



$\Delta r$  for 2770 valid events

