

The Structure of Perturbative Renormalization Group Functions

Anders Eller Thomsen

Applications of Field Theory to Hermitian and non-Hermitian Systems
King's College London, 10-13 September 2024

u^b

^b
UNIVERSITÄT
BERN

AEC
ALBERT EINSTEIN CENTER
FOR FUNDAMENTAL PHYSICS



Swiss National
Science Foundation

How I Learned to Stop Worrying and Tolerate Divergence

Anders Eller Thomsen

Applications of Field Theory to Hermitian and non-Hermitian Systems
King's College London, 10-13 September 2024

u^b

^b
UNIVERSITÄT
BERN

AEC
ALBERT EINSTEIN CENTER
FOR FUNDAMENTAL PHYSICS



Swiss National
Science Foundation


Parametrizing β -functions

Most general 4D renormalizable theory (ignoring relevant couplings):

$$\mathcal{L} = + \frac{1}{2} (\partial^\mu \phi - i A_\mu^A T_\phi^A \phi)_a^2 + i \psi_i^\dagger \bar{\sigma}^\mu (\partial_\mu \psi - i A_\mu^A T_\psi^A \psi)^i \\ - \frac{1}{4} a_{AB}^{-1} F_{\mu\nu}^A F^{B\mu\nu} - \frac{1}{2} (y_{aij} \psi^i \psi^j + \text{H.c.}) \phi_a - \frac{1}{24} \lambda_{abcd} \phi_a \phi_b \phi_c \phi_d$$

Parametrize RG functions with monomials of the couplings, e.g.,

$$\beta_{aij} = \frac{dy_{aij}}{dt}, \quad \beta_{aij}^{(\ell)} = \sum_n \mathbf{y}_n^{(\ell)} [Y_n^{(\ell)}(a, y, \lambda, T_\psi, T_\phi)]_{aij}$$

 real-valued coefficients

Parametrizing β -functions

Most general 4D renormalizable theory (ignoring relevant couplings):

$$\mathcal{L} = + \frac{1}{2} (\partial^\mu \phi - i A_\mu^A T_\phi^A \phi)_a^2 + i \psi_i^\dagger \bar{\sigma}^\mu (\partial_\mu \psi - i A_\mu^A T_\psi^A \psi)^i - \frac{1}{4} a_{AB}^{-1} F_{\mu\nu}^A F^{B\mu\nu} - \frac{1}{2} (y_{aij} \psi^i \psi^j + \text{H.c.}) \phi_a - \frac{1}{24} \lambda_{abcd} \phi_a \phi_b \phi_c \phi_d$$

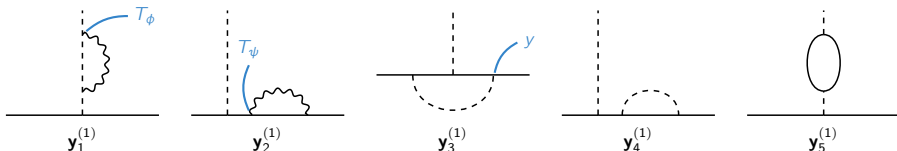
Parametrize RG functions with monomials of the couplings, e.g.,

$$\beta_{aij} = \frac{dy_{aij}}{dt}, \quad \beta_{aij}^{(\ell)} = \sum_n \mathbf{y}_n^{(\ell)} [Y_n^{(\ell)}(a, y, \lambda, T_\psi, T_\phi)]_{aij}$$

— real-valued coefficients

Parametrization of **1-loop Yukawa β -functions**:

$$\beta_{aij}^{(1)} = \mathbf{y}_1^{(1)} y_b [T_\phi^A a_{AB} T_\phi^B]_{ba} + \mathbf{y}_2^{(1)} y_a [T_\psi^A a_{AB} T_\psi^B] + \mathbf{y}_3^{(1)} y_b y_a^* y_b + \mathbf{y}_4^{(1)} y_b y_b^* y_a + \mathbf{y}_5^{(1)} y_b \text{Tr } \tilde{y}_b y_a$$



General β -functions in 4D QFTs

- General formulas for β -functions are long known to order 3–2–2 (\overline{MS}).

Macachek, Vaughn '83, '84; Jack, Osborn '84; Pickering, Gracey, Jones [hep-ph/0104247]

- Computer packages with implementation of the general formulas:
SARAH 4, **PyR@TE 3**, **ARGES**, and **RGBeta**.

- Recent results for the general 4–3–3 β -functions

Bednyakov, Pikelner [2105.09918]; Davies, Herren, AET [2110.05496]; Steudtner, AET [arXiv:2408.05267]

- Loops are hard!
- γ_5 -related ambiguity when using NDR

General β -functions in 4D QFTs

- General formulas for β -functions are long known to order 3–2–2 ($\overline{\text{MS}}$).

Macachek, Vaughn '83, '84; Jack, Osborn '84; Pickering, Gracey, Jones [hep-ph/0104247]

- Computer packages with implementation of the general formulas:
SARAH 4, **PyR@TE 3**, **ARGES**, and **RGBeta**.

- Recent results for the general 4–3–3 β -functions

Bednyakov, Pikelner [2105.09918]; Davies, Herren, AET [2110.05496]; Steudtner, AET [arXiv:2408.05267]

- Loops are hard!
- γ_5 -related ambiguity when using NDR
- Flavor becomes non-trivial at 3-loop order

Flavor is present when multiple matter fields have the same quantum numbers;
it manifests as a continuous symmetry G_F

General β -functions in 4D QFTs

- General formulas for β -functions are long known to order 3–2–2 ($\overline{\text{MS}}$).

Macachek, Vaughn '83, '84; Jack, Osborn '84; Pickering, Gracey, Jones [hep-ph/0104247]

- Computer packages with implementation of the general formulas:
SARAH 4, **PyR@TE 3**, **ARGES**, and **RGBeta**.

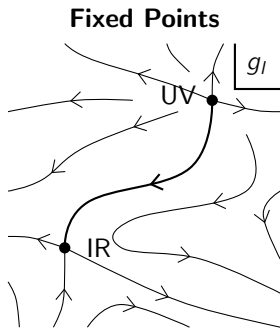
- Recent results for the general 4–3–3 β -functions

Bednyakov, Pikelner [2105.09918]; Davies, Herren, **AET** [2110.05496]; Steudtner, **AET** [arXiv:2408.05267]

- Loops are hard!
- γ_5 -related ambiguity when using NDR
- Flavor becomes non-trivial at 3-loop order
- Some calculations have resulted in seemingly nonsensical divergent RG functions, e.g.,

$$\gamma_u \supset \frac{1}{\epsilon} \frac{1}{(4\pi)^6} \frac{1}{16} y_u^\dagger [y_d y_d^\dagger, y_u y_u^\dagger] y_u$$

CFTs: a showcase that flavor matters

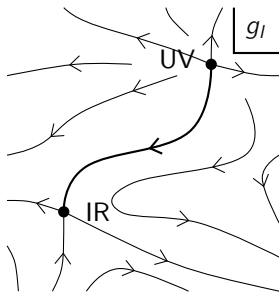


Traditionally CFTs were understood to be RG fixed points:

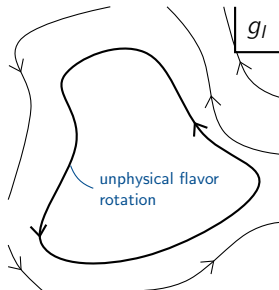
$$[T^\mu{}_\mu] = \beta_I[\mathcal{O}^I] = 0$$

CFTs: a showcase that flavor matters

Fixed Points



Limit Cycles



Traditionally CFTs were understood to be RG fixed points: ignores J_F^μ

$$[T^\mu{}_\mu] = \beta_I[\mathcal{O}'] = 0$$

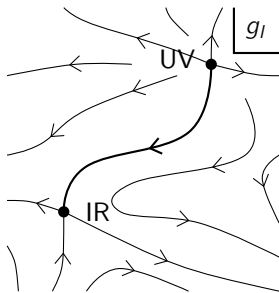
Limit cycles can be (are?) CFTs

Fortin, Grinstein, Stergiou [1206.2921] [1208.3674]

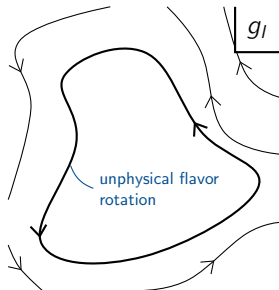
$$[T^\mu{}_\mu] = B_I[\mathcal{O}'] = 0$$

CFTs: a showcase that flavor matters

Fixed Points



Limit Cycles



Traditionally CFTs were understood to be RG fixed points: ignores J_F^μ

$$[T^\mu_\mu] = \beta_I[\mathcal{O}^I] = 0$$

Limit cycles can be (are?) CFTs

Fortin, Grinstein, Stergiou [1206.2921] [1208.3674]

$$[T^\mu_\mu] = B_I[\mathcal{O}^I] = 0$$

$B_I = \beta_I - (v g)_I$ is a more physical β -function

Four-dimensional QFT

Most general renormalizable theory in 4D (ignoring relevant couplings):

$$\mathcal{L} = +\frac{1}{2}(D_\mu\phi)_a(D^\mu\phi)_a + i\psi_i^\dagger\bar{\sigma}^\mu(D_\mu\psi)^i + \mathcal{L}_{\text{gh}} + \mathcal{L}_{\text{gf}} \\ -\frac{1}{4}a_{AB}^{-1}F_{\mu\nu}^A F^{B\mu\nu} - \frac{1}{2}(Y_{aij}\psi^i\psi^j + \text{H.c.})\phi_a - \frac{1}{24}\lambda_{abcd}\phi_a\phi_b\phi_c\phi_d$$

The vacuum functional

$$e^{i\mathcal{W}[\mathcal{J}]} = \int[\mathcal{D}\Phi] e^{iS[\Phi, \mathcal{J}]}, \quad S = S_{\text{kin}}[\Phi] + \int d^d x \left(\underbrace{g_I \mathcal{O}^I(x)}_{\text{set of all marginal couplings}} + \underbrace{\mathcal{J}_\alpha \Phi^\alpha}_{\text{all field sources}} \right)$$

generates all the connected n -point functions

G_F is the largest continuous symmetry group of S_{kin}

For instance, in the SM $G_F = \text{U}(3)_q \times \text{U}(3)_u \times \text{U}(3)_d \times \text{U}(3)_\ell \times \text{U}(3)_e$

The **local renormalization group** introduces new sources:

Shore '87; Osborn '89; Jack, Osborn '90; Osborn '91; Fortin, Grinstein, Stergiou [1208.3674]; Jack, Osborn [1312.0428]; Baume *et al.* [1401.5983]

$$\underbrace{T_{\mu\nu}}_{\text{stress-energy tensor}} : \eta_{\mu\nu} \rightarrow \gamma_{\mu\nu}(x) \quad \mathcal{O}^I : g_I \rightarrow g_I(x) \quad \underbrace{J_F^\mu}_{\text{flavor current; } J_F^\mu \in \mathfrak{g}_F} : D_\mu \rightarrow D_\mu - a_\mu(x)$$

Weyl symmetry

The **local renormalization group** introduces new sources:

Shore '87; Osborn '89; Jack, Osborn '90; Osborn '91; Fortin, Grinstein, Stergiou [1208.3674]; Jack, Osborn [1312.0428]; Baume *et al.* [1401.5983]

$$T_{\mu\nu} : \eta_{\mu\nu} \rightarrow \gamma_{\mu\nu}(x) \quad \mathcal{O}^I : g_I \rightarrow g_I(x) \quad J_F^\mu : D_\mu \rightarrow D_\mu - a_\mu(x)$$

stress-energy tensor flavor current; $J_F^\mu \in \mathfrak{g}_F$

The generator of Weyl symmetry—local scale invariance:

$$\Delta_\sigma^W = \int d^d x \left(2\sigma \gamma^{\mu\nu} \frac{\delta}{\delta \gamma^{\mu\nu}} \right)$$

infinitesimal parameter

Weyl symmetry

The **local renormalization group** introduces new sources:

Shore '87; Osborn 89; Jack, Osborn '90; Osborn '91; Fortin, Grinstein, Stergiou [1208.3674]; Jack, Osborn [1312.0428]; Baume *et al.* [1401.5983]

$$T_{\mu\nu} : \eta_{\mu\nu} \rightarrow \gamma_{\mu\nu}(x) \quad \mathcal{O}^I : g_I \rightarrow g_I(x) \quad J_F^\mu : D_\mu \rightarrow D_\mu - a_\mu(x)$$

stress-energy tensor flavor current; $J_F^\mu \in \mathfrak{g}_F$

The generator of Weyl symmetry—local scale invariance:

$$\Delta_\sigma^W = \int d^d x \left(2\sigma \gamma^{\mu\nu} \frac{\delta}{\delta \gamma^{\mu\nu}} - \sigma \beta_I \frac{\delta}{\delta g_I} \right)$$

infinitesimal parameter β -function

Weyl symmetry

The **local renormalization group** introduces new sources:

Shore '87; Osborn 89; Jack, Osborn '90; Osborn '91; Fortin, Grinstein, Stergiou [1208.3674]; Jack, Osborn [1312.0428]; Baume *et al.* [1401.5983]

$$T_{\mu\nu} : \eta_{\mu\nu} \rightarrow \gamma_{\mu\nu}(x) \quad \mathcal{O}^I : g_I \rightarrow g_I(x) \quad J_F^\mu : D_\mu \rightarrow D_\mu - a_\mu(x)$$

stress-energy tensor flavor current; $J_F^\mu \in \mathfrak{g}_F$

The generator of Weyl symmetry—local scale invariance:

$$\Delta_\sigma^W = \int d^d x \left(2\sigma \gamma^{\mu\nu} \frac{\delta}{\delta \gamma^{\mu\nu}} - \underbrace{\sigma \beta_I}_{\beta\text{-function}} \frac{\delta}{\delta g_I} + \sigma \mathcal{J}_\beta [(d - \Delta_\alpha) \delta^\beta_\alpha - \gamma^\beta_\alpha] \frac{\delta}{\delta \mathcal{J}_\alpha} \right)$$

infinitesimal parameter field anomalous dimension

Weyl symmetry

The **local renormalization group** introduces new sources:

Shore '87; Osborn 89; Jack, Osborn '90; Osborn '91; Fortin, Grinstein, Stergiou [1208.3674]; Jack, Osborn [1312.0428]; Baume *et al.* [1401.5983]

$$T_{\mu\nu} : \eta_{\mu\nu} \rightarrow \gamma_{\mu\nu}(x) \quad \mathcal{O}^I : g_I \rightarrow g_I(x) \quad J_F^\mu : D_\mu \rightarrow D_\mu - a_\mu(x)$$

stress-energy tensor flavor current; $J_F^\mu \in \mathfrak{g}_F$

The generator of Weyl symmetry—local scale invariance:

$$\Delta_\sigma^W = \int d^d x \left(2\sigma \underbrace{\gamma^{\mu\nu}}_{\text{infinitesimal parameter}} \frac{\delta}{\delta \gamma^{\mu\nu}} - \underbrace{\sigma \beta_I}_{\beta\text{-function}} \frac{\delta}{\delta g_I} + \sigma \mathcal{J}_\beta [(d - \Delta_\alpha) \delta^\beta_\alpha - \underbrace{\gamma^\beta_\alpha}_{\text{field anomalous dimension}}] \frac{\delta}{\delta \mathcal{J}_\alpha} \right. \\ \left. + [\partial_\mu \sigma v - \sigma D_\mu g_I \rho^I] \cdot \frac{\delta}{\delta a_\mu} \right)$$

RG functions of the G_F current; $v, \rho^I \in \mathfrak{g}_F$

Weyl symmetry

The **local renormalization group** introduces new sources:

Shore '87; Osborn '89; Jack, Osborn '90; Osborn '91; Fortin, Grinstein, Stergiou [1208.3674]; Jack, Osborn [1312.0428]; Baume *et al.* [1401.5983]

$$T_{\mu\nu} : \eta_{\mu\nu} \rightarrow \gamma_{\mu\nu}(x) \quad \mathcal{O}^I : g_I \rightarrow g_I(x) \quad J_F^\mu : D_\mu \rightarrow D_\mu - a_\mu(x)$$

stress-energy tensor flavor current; $J_F^\mu \in \mathfrak{g}_F$

The generator of Weyl symmetry—local scale invariance:

$$\Delta_\sigma^W = \int d^d x \left(2\sigma \underbrace{\gamma^{\mu\nu}}_{\text{infinitesimal parameter}} \frac{\delta}{\delta \gamma^{\mu\nu}} - \underbrace{\sigma \beta_I}_{\beta\text{-function}} \frac{\delta}{\delta g_I} + \sigma \mathcal{J}_\beta [(d - \Delta_\alpha) \delta^\beta_\alpha - \underbrace{\gamma^\beta_\alpha}_{\text{field anomalous dimension}}] \frac{\delta}{\delta \mathcal{J}_\alpha} + [\partial_\mu \sigma v - \sigma D_\mu g_I \rho^I] \cdot \frac{\delta}{\delta a_\mu} \right)$$

RG functions of the G_F current; $v, \rho^I \in \mathfrak{g}_F$

Δ_σ^W generates the the trace anomaly equation (modulo anomaly)

$$[T^\mu_\mu] = \beta_I [\mathcal{O}^I] + v \cdot \partial_\mu [J_F^\mu] \quad (\text{FSCC})$$

Flat-space constant-coupling limit:
 $\gamma_{\mu\nu}(x) = \eta_{\mu\nu}, g_I(x) = g_I, a_\mu = 0$

Accounting identity for mass dimension:

$$\Delta^\mu \mathcal{W} = 0, \quad \Delta^\mu = \mu \frac{\partial}{\partial \mu} + \int d^d x \left(2\gamma^{\mu\nu} \frac{\delta}{\delta \gamma^{\mu\nu}} + (d - \Delta_\alpha) \mathcal{J}_\alpha \frac{\delta}{\delta \mathcal{J}_\alpha} \right)$$

Accounting identity for mass dimension:

$$\Delta^\mu \mathcal{W} = 0, \quad \Delta^\mu = \mu \frac{\partial}{\partial \mu} + \int d^d x \left(2\gamma^{\mu\nu} \frac{\delta}{\delta \gamma^{\mu\nu}} + (d - \Delta_\alpha) \mathcal{J}_\alpha \frac{\delta}{\delta \mathcal{J}_\alpha} \right)$$

The RG is a symmetry of the theory generated by $\Delta^{\text{RG}} = \Delta^\mu - \Delta_{\sigma=1}^W$, which gives rise to the **Callan–Symanzik equation**:

$$0 = \Delta^{\text{RG}} \mathcal{W} = \left(\frac{\partial}{\partial t} + \beta_l \partial^l + \int d^d x \mathcal{J}_\beta \gamma^\beta_\alpha \frac{\delta}{\delta \mathcal{J}_\alpha} \right) \mathcal{W} \quad (\text{FSCC})$$

Exactly what we would get from $\frac{d\mathcal{W}}{dt} = 0$:

$$\left(\frac{\partial}{\partial t} + \beta_g \frac{\partial}{\partial g} + m\gamma \right) G^{(n)}(\{p\}) = 0$$

Flavor symmetry

G_F is a symmetry of S with generator

$$\Delta_\omega^F = \int d^d x \left(D_\mu \omega \cdot \frac{\delta}{\delta a_\mu} - (\omega g)_I \frac{\delta}{\delta g_I} - (\omega \mathcal{J})_\alpha \frac{\delta}{\delta \mathcal{J}_\alpha} \right), \quad \omega \in \mathfrak{g}_F$$

Flavor symmetry

G_F is a symmetry of S with generator

$$\Delta_\omega^F = \int d^d x \left(D_\mu \omega \cdot \frac{\delta}{\delta a_\mu} - (\omega g)_I \frac{\delta}{\delta g_I} - (\omega \mathcal{J})_\alpha \frac{\delta}{\delta \mathcal{J}_\alpha} \right), \quad \omega \in \mathfrak{g}_F$$

There is a **class of equivalent Weyl symmetries**:

$$\Delta_\sigma^{W'} = \Delta_\sigma^W + \Delta_{\sigma\alpha}^F, \quad \alpha(g) \in \mathfrak{g}_F,$$

Ambiguity in RG functions defined by the Weyl transformation:

$$\beta'_I = \beta_I + (\alpha g)_I, \quad v' = v + \alpha, \quad \rho'^I = \rho^I - \partial^I \alpha, \quad \gamma'^\alpha_\beta = \gamma^\alpha_\beta - \alpha^\alpha_\beta$$

The RG flow has a flavor ambiguity

Ambiguity in the RG

Flavor-improved RG functions are invariant w.r.t. the flavor ambiguity:

$$B_I = \beta_I - (v g)_I, \quad \Gamma^\alpha_\beta = \gamma^\alpha_\beta + v^\alpha_\beta, \quad P^I = \rho^I + \partial^I v$$

We can choose a 'gauge' where $v = 0$:

$$\begin{aligned} \widehat{\Delta}_\sigma^W = \Delta_\sigma^W + \Delta_{-\sigma v}^F = & \int d^d x \left(2\sigma \gamma^{\mu\nu} \frac{\delta}{\delta \gamma_{\mu\nu}} - \sigma B_I \frac{\delta}{\delta g_I} \right. \\ & \left. + \sigma \mathcal{J}_\beta [(d - \Delta_\alpha) \delta^\beta_\alpha - \Gamma^\beta_\alpha] \frac{\delta}{\delta \mathcal{J}_\alpha} - \sigma D_\mu g_I P^I \cdot \frac{\delta}{\delta a_\mu} \right) \end{aligned}$$

Ambiguity in the RG

Flavor-improved RG functions are invariant w.r.t. the flavor ambiguity:

$$B_l = \beta_l - (v g)_l, \quad \Gamma^\alpha_\beta = \gamma^\alpha_\beta + v^\alpha_\beta, \quad P^l = \rho^l + \partial^l v$$

We can choose a 'gauge' where $v = 0$:

$$\begin{aligned} \widehat{\Delta}_\sigma^W = \Delta_\sigma^W + \Delta_{-\sigma v}^F = & \int d^d x \left(2\sigma \gamma^{\mu\nu} \frac{\delta}{\delta \gamma_{\mu\nu}} - \sigma B_l \frac{\delta}{\delta g_l} \right. \\ & \left. + \sigma \mathcal{J}_\beta [(d - \Delta_\alpha) \delta^\beta_\alpha - \Gamma^\beta_\alpha] \frac{\delta}{\delta \mathcal{J}_\alpha} - \sigma D_\mu g_l P^l \cdot \frac{\delta}{\delta a_\mu} \right) \end{aligned}$$

- β_l and B_l appear in two equally valid versions of the Weyl symmetry and the CS equation
- $B_l = 0$ indicates that the theory is a CFT
- $\beta_l = \frac{dg_l}{dt}$ whereas $B_l \neq \frac{dg_l}{dt}$; the coupling counterterms determines β_l rather than B_l

γ -pole at 3-loop order

Renormalization condition for 2-point functions:

($\overline{\text{MS}}$, $d = 4 - 2\epsilon$)

$$Z^\dagger \text{---} \textcircled{1\text{PI}} \text{---} Z = \text{finite}, \quad Z = \mathbb{1} + \sum_{n=1}^{\infty} \frac{Z^{(n)}}{\epsilon^n}$$

Determines $Z^\dagger Z$

The field anomalous dimension

$$\gamma = Z^{-1} \frac{d}{d\epsilon} Z = \sum_{n=0}^{\infty} \frac{\gamma^{(n)}}{\epsilon^n} \implies \gamma^{(0)} = -\zeta Z^{(1)}, \quad \zeta = k_l g_l \partial^l$$

loop-counting operator

The RG with divergent RG functions

The evolution of *renormalized* amplitudes is governed by the CS Eq.:

$$0 = \Delta^{\text{RG}} \mathcal{W} = \left(\frac{\partial}{\partial t} + \beta_l \partial^l + \int d^d x \mathcal{J}_\beta \gamma^\beta_\alpha \frac{\delta}{\delta \mathcal{J}_\alpha} \right) \mathcal{W} \quad (\text{FSCC})$$

The RG with divergent RG functions

The evolution of *renormalized* amplitudes is governed by the CS Eq.:

$$\underbrace{\left(\frac{\partial}{\partial t} + \left(\epsilon \beta_l^{(-1)} + \beta_l^{(0)} \right) \partial^l + \int d^d x \mathcal{J}_\beta \gamma^{(0)\beta}{}_\alpha \frac{\delta}{\delta \mathcal{J}_\alpha} \right)}_{\text{finite}} \mathcal{W} = - \sum_{n=1}^{\infty} \frac{1}{\epsilon^n} \left(\beta_l^{(n)} \partial^l + \int d^d x \mathcal{J}_\beta \gamma^{(n)\beta}{}_\alpha \frac{\delta}{\delta \mathcal{J}_\alpha} \right) \mathcal{W}$$

The RG with divergent RG functions

The evolution of *renormalized* amplitudes is governed by the CS Eq.:

$$\underbrace{\left(\frac{\partial}{\partial t} + \left(\epsilon \beta_l^{(-1)} + \beta_l^{(0)} \right) \partial' + \int d^d x \mathcal{J}_\beta \gamma^{(0)\beta}{}_\alpha \frac{\delta}{\delta \mathcal{J}_\alpha} \right)}_{\text{finite}} \mathcal{W} = - \sum_{n=1}^{\infty} \frac{1}{\epsilon^n} \left(\beta_l^{(n)} \partial' + \int d^d x \mathcal{J}_\beta \gamma^{(n)\beta}{}_\alpha \frac{\delta}{\delta \mathcal{J}_\alpha} \right) \mathcal{W}$$

The Ward identity for the flavor symmetry group G_F (FSCC):

$$0 = \Delta_\omega^F \mathcal{W} = \left((\omega g)_I \partial' - \int d^d x \mathcal{J}_\beta \omega^\beta{}_\alpha \frac{\delta}{\delta \mathcal{J}_\alpha} \right) \mathcal{W}, \quad \omega \in \mathfrak{g}_F$$

The RG with divergent RG functions

The evolution of *renormalized* amplitudes is governed by the CS Eq.:

$$\underbrace{\left(\frac{\partial}{\partial t} + \left(\epsilon \beta_l^{(-1)} + \beta_l^{(0)} \right) \partial^l + \int d^d x \mathcal{J}_\beta \gamma^{(0)\beta}{}_\alpha \frac{\delta}{\delta \mathcal{J}_\alpha} \right)}_{\text{finite}} \mathcal{W} = - \sum_{n=1}^{\infty} \frac{1}{\epsilon^n} \left(\beta_l^{(n)} \partial^l + \int d^d x \mathcal{J}_\beta \gamma^{(n)\beta}{}_\alpha \frac{\delta}{\delta \mathcal{J}_\alpha} \right) \mathcal{W}$$

The Ward identity for the flavor symmetry group G_F (FSCC):

$$0 = \Delta_\omega^F \mathcal{W} = \left((\omega g)_l \partial^l - \int d^d x \mathcal{J}_\beta \omega^\beta{}_\alpha \frac{\delta}{\delta \mathcal{J}_\alpha} \right) \mathcal{W}, \quad \omega \in \mathfrak{g}_F$$

The RG flow is finite due to

RG Finiteness

(theorem)

$$\gamma^{(n)} \in \mathfrak{g}_F \quad \text{and} \quad \beta_l^{(n)} = -(\gamma^{(n)} g)_l, \quad n \geq 1$$

Herren, AET [2104.07037]

RG finiteness in the SM

3-loop RG divergences in the SM:

using counterterms from Herren, Mihaila, Steinhauser [1712.06614]

$$(4\pi)^6 \gamma_q^{(1)} = \frac{g_1^2}{96} [y_u y_u^\dagger, y_d y_d^\dagger] + \frac{1}{32} [y_u y_u^\dagger y_u y_u^\dagger, y_d y_d^\dagger] + \frac{1}{32} [y_d y_d^\dagger y_d y_d^\dagger, y_u y_u^\dagger]$$

$$(4\pi)^6 \gamma_u^{(1)} = \frac{1}{16} y_u^\dagger [y_d y_d^\dagger, y_u y_u^\dagger] y_u$$

$$(4\pi)^6 \beta_{y_u}^{(1)} = -\frac{g_1^2}{96} [y_u y_u^\dagger, y_d y_d^\dagger] y_u - \frac{1}{32} [y_u y_u^\dagger y_u y_u^\dagger, y_d y_d^\dagger] y_u \\ - \frac{1}{32} [y_d y_d^\dagger y_d y_d^\dagger, y_u y_u^\dagger] y_u + \frac{1}{16} y_u y_u^\dagger [y_d y_d^\dagger, y_u y_u^\dagger] y_u$$

$$(\omega y_u)^i_j = \omega_q^i_k y_u^k_j - y_u^i_k \omega_u^k_j + \omega_h y_u^i_j$$

$\beta_{y_u}^{(1)} = -(\gamma^{(1)} y_u)$, $\beta_{y_u}^{(2)} = -(\gamma^{(2)} y_u)$, etc. in the SM

SM RG functions are RG finite at 3-loop order

Renormalization ambiguity

\mathcal{W} is invariant under flavor rotations $R \in G_F$: e.g., $y_u \rightarrow R_q y_u R_u^\dagger$ in the SM

$$\begin{aligned}\mathcal{W}[\gamma, g, \mathcal{J}, a] &= \mathcal{W}[\gamma, Rg, R\mathcal{J}, a^R] = \\ \mathcal{W}_0[\gamma, g_0, \mathcal{J}_0, a_0] &= \mathcal{W}_0[\gamma, Rg_0, R\mathcal{J}_0, a_0^R], \quad (Rg_0)_I = g_{0,I}(Rg)\end{aligned}$$

Renormalization ambiguity

\mathcal{W} is invariant under flavor rotations $R \in G_F$: e.g., $y_u \rightarrow R_q y_u R_u^\dagger$ in the SM

$$\begin{aligned}\mathcal{W}[\gamma, g, \mathcal{J}, a] &= \mathcal{W}[\gamma, Rg, R\mathcal{J}, a^R] = \\ \mathcal{W}_0[\gamma, g_0, \mathcal{J}_0, a_0] &= \mathcal{W}_0[\gamma, Rg_0, R\mathcal{J}_0, a_0^R], \quad (Rg_0)_I = g_{0,I}(Rg)\end{aligned}$$

Take instead a divergent rotation of \mathcal{W}_0 :

$$U = \exp\left[-\sum_{n=1}^{\infty} \frac{1}{\epsilon^n} u^{(n)}(g)\right], \quad u^{(n)} \in \mathfrak{g}_F$$

$$\mathcal{W}[\gamma, g, \mathcal{J}, a] = \mathcal{W}_0[\gamma, g_0, \mathcal{J}_0, a_0] = \mathcal{W}_0[\gamma, Ug_0, U\mathcal{J}_0, a_0^U]$$

Leads to **change of counterterms w/o change in g_I** : ambiguity in taking $\sqrt{Z^\dagger Z}$

Jack, Osborn '90; Fortin et al. [1208.3674]

$$(U\mathcal{J}_0)_\alpha = \mathcal{J}_{0,\beta} U^{\dagger\beta}_\alpha = \mathcal{J}_\beta (Z^{-1}U^\dagger)^\beta_\alpha \implies Z^{U\alpha}_\beta = U^\alpha_\gamma Z^\gamma_\beta$$

Ambiguity in RG the functions

$\mathcal{W}_0[\gamma, g_0, \mathcal{J}_0, a_0] = \mathcal{W}_0[\gamma, U g_0, U \mathcal{J}_0, a_0^U]$ *but produce different RG functions!*

Herren, AET [2104.07037]

$$\Delta\gamma \equiv \gamma^U - \gamma = -\beta_I U \partial^I U^\dagger \in \mathfrak{g}_F$$

$$\Delta\beta_I \equiv \beta_I^U - \beta_I = -(\Delta\gamma g)_I$$

$$\Delta v \equiv v^U - v = -\Delta\gamma$$

Ambiguity in RG the functions

$\mathcal{W}_0[\gamma, g_0, \mathcal{J}_0, a_0] = \mathcal{W}_0[\gamma, U g_0, U \mathcal{J}_0, a_0^U]$ *but produce different RG functions!*

Herren, AET [2104.07037]

$$\Delta\gamma \equiv \gamma^U - \gamma = -\beta_I U \partial^I U^\dagger \in \mathfrak{g}_F$$

$$\Delta\beta_I \equiv \beta_I^U - \beta_I = -(\Delta\gamma g)_I$$

$$\Delta v \equiv v^U - v = -\Delta\gamma$$

i) By choosing U , one can engineer any $\Delta\gamma = \alpha(g) \in \mathfrak{g}_F$

– The ct. ambiguity reproduces the ambiguity in defining the Weyl symmetry:

$$\Delta_\sigma^W \rightarrow \Delta_\sigma^W + \Delta_{\sigma\alpha}^F$$

Ambiguity in RG the functions

$\mathcal{W}_0[\gamma, g_0, \mathcal{J}_0, a_0] = \mathcal{W}_0[\gamma, U g_0, U \mathcal{J}_0, a_0^U]$ *but produce different RG functions!*

Herren, AET [2104.07037]

$$\Delta\gamma \equiv \gamma^U - \gamma = -\beta_I U \partial^I U^\dagger \in \mathfrak{g}_F$$

$$\Delta\beta_I \equiv \beta_I^U - \beta_I = -(\Delta\gamma g)_I$$

$$\Delta v \equiv v^U - v = -\Delta\gamma$$

i) By choosing U , one can engineer any $\Delta\gamma = \alpha(g) \in \mathfrak{g}_F$

ii) RG-finiteness is conserved $\beta_I^{(n)} = -(\gamma^{(n)} g)_I, \quad \gamma^{(n)} \in \mathfrak{g}_F, \quad \forall n \geq 1$
– Either *all or none* of the RG functions are RG finite

Ambiguity in RG the functions

$\mathcal{W}_0[\gamma, g_0, \mathcal{J}_0, a_0] = \mathcal{W}_0[\gamma, U g_0, U \mathcal{J}_0, a_0^U]$ *but produce different RG functions!*

Herren, AET [2104.07037]

$$\Delta\gamma \equiv \gamma^U - \gamma = -\beta_I U \partial^I U^\dagger \in \mathfrak{g}_F$$

$$\Delta\beta_I \equiv \beta_I^U - \beta_I = -(\Delta\gamma g)_I$$

$$\Delta v \equiv v^U - v = -\Delta\gamma$$

i) By choosing U , one can engineer any $\Delta\gamma = \alpha(g) \in \mathfrak{g}_F$

ii) RG-finiteness is conserved $\beta_I^{(n)} = -(\gamma^{(n)} g)_I, \quad \gamma^{(n)} \in \mathfrak{g}_F, \quad \forall n \geq 1$

iii) If (β_I, γ) are RG finite, U can be chosen to make them finite

Ambiguity in RG the functions

$\mathcal{W}_0[\gamma, g_0, \mathcal{J}_0, a_0] = \mathcal{W}_0[\gamma, U g_0, U \mathcal{J}_0, a_0^U]$ *but produce different RG functions!*

Herren, AET [2104.07037]

$$\Delta\gamma \equiv \gamma^U - \gamma = -\beta_I U \partial^I U^\dagger \in \mathfrak{g}_F$$

$$\Delta\beta_I \equiv \beta_I^U - \beta_I = -(\Delta\gamma g)_I$$

$$\Delta v \equiv v^U - v = -\Delta\gamma$$

- i) By choosing U , one can engineer any $\Delta\gamma = \alpha(g) \in \mathfrak{g}_F$
- ii) RG-finiteness is conserved $\beta_I^{(n)} = -(\gamma^{(n)} g)_I, \quad \gamma^{(n)} \in \mathfrak{g}_F, \quad \forall n \geq 1$
- iii) If (β_I, γ) are RG finite, U can be chosen to make them finite
- iv) One can choose counterterms such that the RG functions coincide with the flavor-improved $(B_I, \Gamma) = (\beta_I - (v g)_I, \gamma + v)$
 - Choosing $\Delta\gamma = v, (\beta_I^U, \gamma^U) = (B_I, \Gamma)$
 - (B_I, Γ) are invariant under the renormalization ambiguity

Ambiguity in RG the functions

$\mathcal{W}_0[\gamma, g_0, \mathcal{J}_0, a_0] = \mathcal{W}_0[\gamma, U g_0, U \mathcal{J}_0, a_0^U]$ *but produce different RG functions!*

Herren, AET [2104.07037]

$$\Delta\gamma \equiv \gamma^U - \gamma = -\beta_I U \partial^I U^\dagger \in \mathfrak{g}_F$$

$$\Delta\beta_I \equiv \beta_I^U - \beta_I = -(\Delta\gamma g)_I$$

$$\Delta v \equiv v^U - v = -\Delta\gamma$$

- i) By choosing U , one can engineer any $\Delta\gamma = \alpha(g) \in \mathfrak{g}_F$
- ii) RG-finiteness is conserved $\beta_I^{(n)} = -(\gamma^{(n)} g)_I, \quad \gamma^{(n)} \in \mathfrak{g}_F, \quad \forall n \geq 1$
- iii) If (β_I, γ) are RG finite, U can be chosen to make them finite
- iv) One can choose counterterms such that the RG functions coincide with the flavor-improved $(B_I, \Gamma) = (\beta_I - (v g)_I, \gamma + v)$
- v) Finiteness of (B_I, Γ) ensures RG-finiteness of (β_I, γ)
 - Their finiteness follows from the trace (scale) anomaly

Summary

- i) The occurrence of certain ϵ poles in the RG functions is consistent with the Callan–Symanzik equation
- ii) The flavor symmetry causes an ambiguity in the choice of renormalization constants
- iii) Using the ambiguity, it is always possible to recover finite RG functions (β_l, γ)
- iv) The flavor-improved RG functions (B_l, Γ) are unambiguous, finite, and more physical: they are the preferred RG functions

Summary

- i) The occurrence of certain ϵ poles in the RG functions is consistent with the Callan–Symanzik equation
- ii) The flavor symmetry causes an ambiguity in the choice of renormalization constants
- iii) Using the ambiguity, it is always possible to recover finite RG functions (β_l, γ)
- iv) The flavor-improved RG functions (B_l, Γ) are unambiguous, finite, and more physical: they are the preferred RG functions

The general 4-3-3 β -functions are implemented in

RGBeta v1.2.0

<https://github.com/aethomsen/RGBeta>

Backup

Why flavor becomes important at 3-loop order

- Elements of \mathfrak{g}_F are anti-Hermitian
- $\nu(g) \in \mathfrak{g}_F$ is a flavor-covariant polynomial in the couplings
- It is not possible to construct 2-loop anti-Hermitian contractions of the marginal couplings

The **leading 1PI contributions to ν** are 3-loop order:

