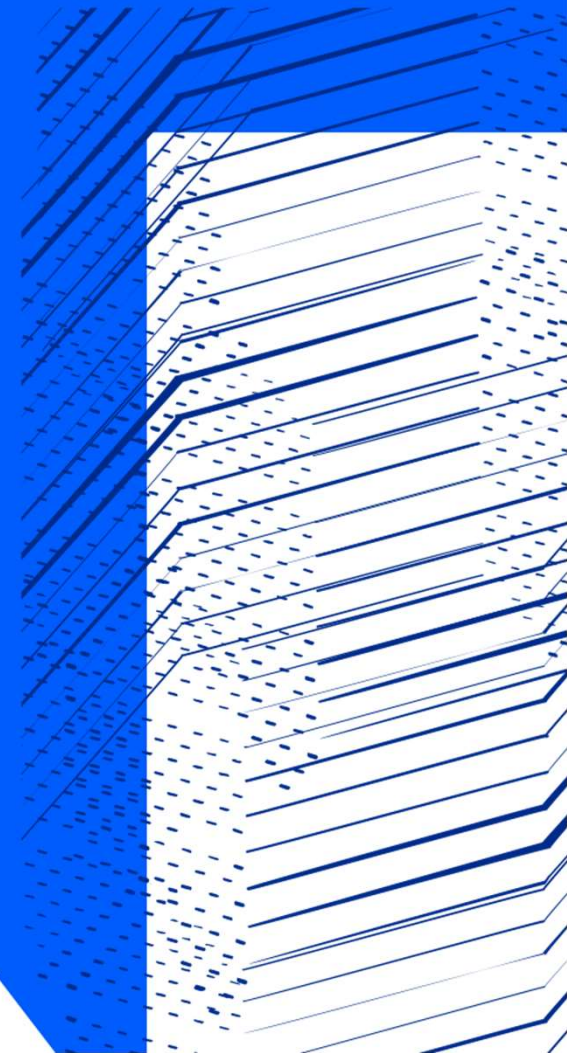




Science and
Technology
Facilities Council

Science Board (PPAN) Update

Professor Keith Grainge
Chair, Science Board (PPAN)



Overview

- I. SB Membership and structure
- II. PP grant line
- III. PPAN Roadmap development
- IV. Top level recommendations
- V. Current financial challenge



Image © STFC Alan Ford

Membership of Science Board (PPAN)

new

Keith Grainge (Chair)
Martin Bauer (Deputy Chair)
Tracey Berry
John Bridges
Alison Bruce
Judith Croston
Gavin Davies
Ineke De Moortel
Francesca Di Lodovico
Monica D'Onofrio
George Efstathiou
Tim Gershon
Anne Green
David Jenkins
Seb Oliver
Iain Steele
Patrick Sutton

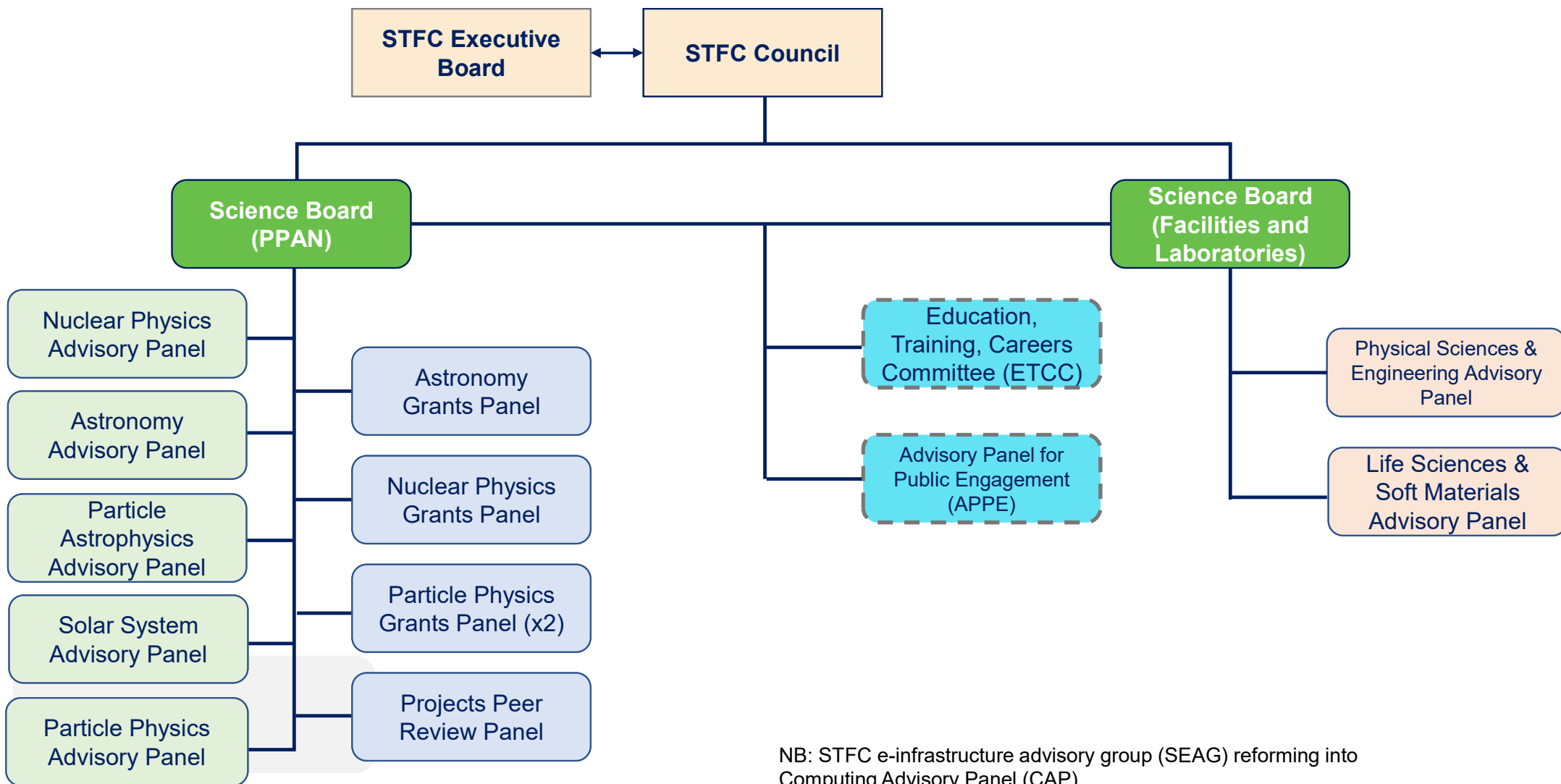
- 6 Particle Physicists
- 6 Astronomers
- 2 Nuclear Physicists
- 2 Astro-Particle Physicists

Many thanks to members rotating off:

Daniella Bortoletto
Dave Charlton
Dave Ireland
Amelie Saintonge

STFC Office: **Laura Woodward**
Claire Jones

STFC science advisory structure



NB: STFC e-infrastructure advisory group (SEAG) reforming into Computing Advisory Panel (CAP)

Grants line – Particle Physics

- PPGP made recommendations for a 4-yr programme
- Substantial saving required for 2025-26
 - Future funding depends on SR2
- Sub-committee of SB(PPAN) Particle Physicists met with GB 13/1/25
 - Followed on from a similar meeting with the Astronomers
 - Least worst plan: 2-yr award, PDRA posts funded with 6-month reduction
 - Universities to manage award exploiting turnover and recruitment delays
 - 3.5 yr funding for 4 yr grant incurred too much future risk wrt SR2
 - Reduction in investigator time (60% requested, 4% awarded) can be used to fine tune
 - Different post types discussed; propose allowing groups flexibility to manage
- Endorsed at full SB(PPAN) meeting 13/3/25

PPAN Roadmap - objective

- Overall goal is to produce prioritized Strategic Roadmap
 - In the context of the PPAN programme budget
 - Not a Balance of Programmes & not a Programmatic Review
- Long-term prioritized roadmap needed & has been lacking
- Will frame future decision making, enable strategic approach to funding
 - Balance of exploitation, M&O, development projects and R&D etc.
 - Balance of projects small/medium/large
 - Support pipelines e.g., skills, technology, funding etc.

“A balanced programme of excellent science across the PPAN research areas over a 10-year timeframe, within a realistic financial planning envelope”

Roadmap inputs

- Programme portfolios prepared by Programme Managers
- Papers on CCIP, Skills and Talent, Public Engagement
- Input from SB(F&L) reps and Dave Newbold to ensure that plan for National Labs aligned with PPAN Roadmap
- Task-and-Finish Groups with co-opted members from SB(F&L) initiated to look at Computing, Accelerators and Sustainability
- Interactive finance tool for inspection of current and projected programme
- Sols for future aspirational projects
- Community engagement through town halls, email and questions
 - Advisory Panels provided updates and SWOT analyses
 - Advisory Panel Chair presentations summarising community input
 - SB(PPAN) reps joined AP meeting to allow flow of information

Roadmap Activities during 2024

- Roadmap was a focus for all SB meetings in 2024
- SB(PPAN) Members asked to analyse and comment on portfolios
 - Consider balance between R&D, theory, construction, and exploitation
 - Consider quality, effectiveness, and impact of portfolio for the next 10 years
 - Focus on 'Discovery Potential' and 'Step Change in Capability'
- Complete 4 page assessment addressing 9 questions, including:
 - Delivery of STFC strategic priorities; key technologies; shape of portfolio in 10 years; risks; changes in funding levels
- Categorise priority of funding lines in the portfolios
 - Top / Very High / High / Medium / Low
- Rapporteurs merged responses into single portfolio report

Top level statements

- Aim was to have a good draft for March 2025 meeting
 - SB(PPAN) recommended that it was inappropriate to publish before SR2; delay until Autumn
- PPAN programme's strengths lie in its global scientific leadership, diverse and balanced portfolio, access to world-class infrastructure, and strong focus on talent development
- Overall balance & breadth of projects broadly supported
- SR1 impact has necessarily had to fall on the grants lines
 - Ideally spread the impact across programme
 - Grant lines are identified as a top priority
- Both SBs working now on recommendations for future
 - Investigate whether commitments can be reduced / withdrawn
 - Propagate the effects to the 10-year timeframe
 - Minimise effects on ECRs
 - Extraordinary SB(PPAN) meeting 15th April

SR short-term impact

- New projects recommended for funding to be paused / withdrawn
 - H3+Beams (new project, not funded)
 - AWAKE (withdrawal from next phase)
 - HL-LHC (Crab cavities completed; no involvement in commissioning)
 - Swift-HEP (withdrawal from next phase; sustainability impact)
 - GridPP7 hardware (unlikely to meet UK pledge to wLCG)
 - DRD (new project, not funded; R&D at some level needed for future)
 - Medium scale DM experiment (DarkSPHERE)

Summary

- The PPAN programme faces a significant financial challenge
 - The scale of the challenge has increased rapidly over last few months
- STFC have been consulting regularly with both SBs for recommendations on how to proceed
 - STFC has been as transparent as possible with SBs
 - STFC staff have put in a huge amount of work to assist
 - However, confidentiality essential during the process
 - Real risk of damage to the outcome otherwise
- 10-year Roadmap work will allow recommendations to be made
 - Publication of Roadmap to follow after impact of SR2 evaluated