

# PP Group Meeting

## 3 minute Summary

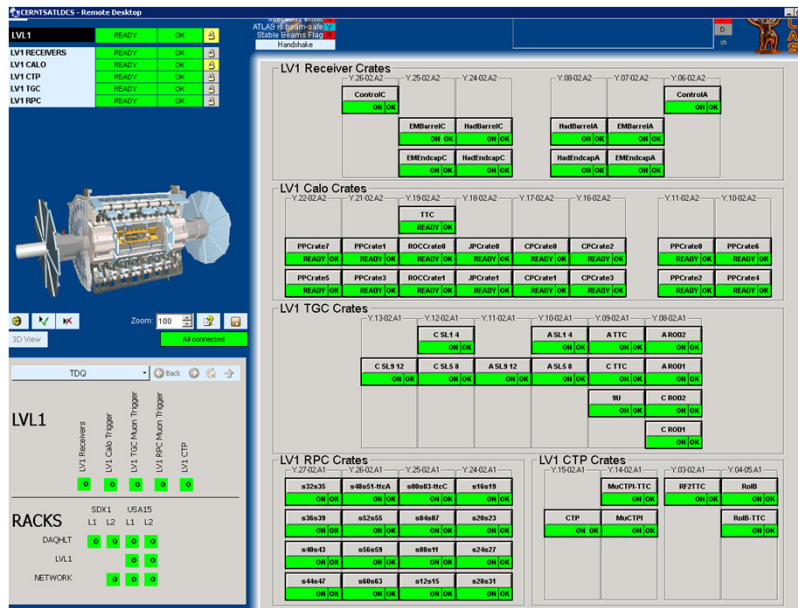
Paul Thompson  
ATLAS



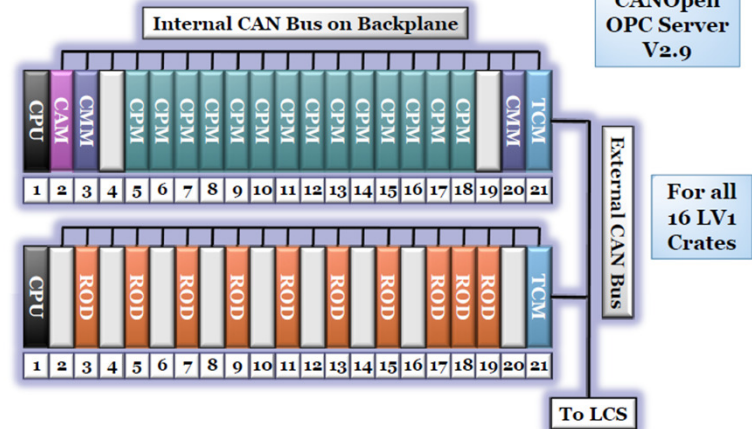
8<sup>th</sup> September 2014

# Working on....

- ATLAS Detector Control System (DCS). The “Slow Control” for Detector monitoring and operation
- Originally for L1Calo but now also for TDAQ (monitor lot of other trigger systems, muons, central trigger etc.)



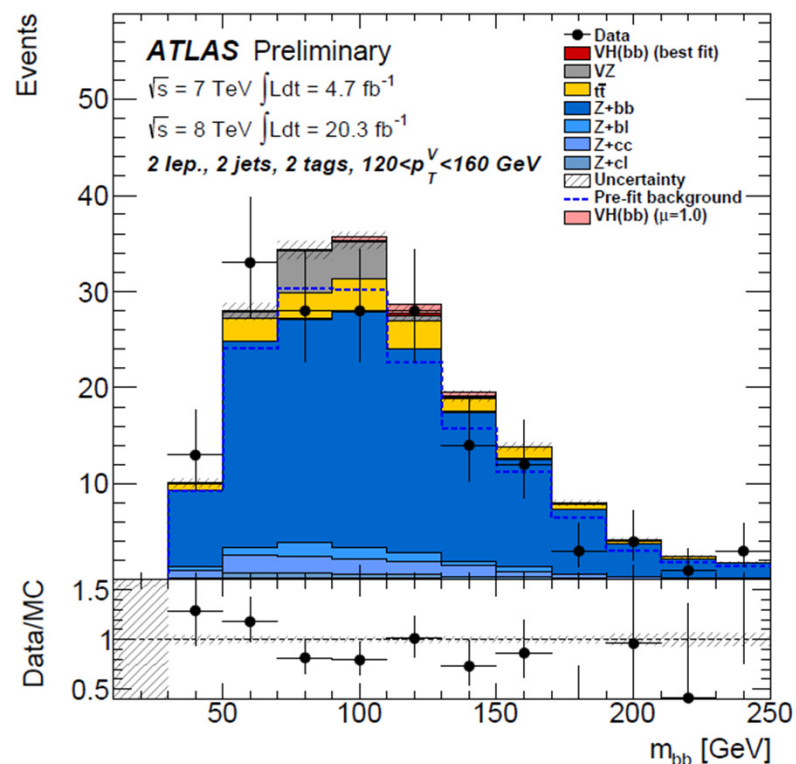
## CANOpen L1Calo CAN Bus



- Ongoing upgrade of software and hardware for Run-II. PVSS->WinCC. CANOpen->CAN Unified Architecture. Incorporate upgraded modules (CAN code) and new ATCA crates etc.

# H->bb

- Measurement on W/ZH production where analysed Z->ll and H->bb on 2012 data publication imminent (combined with 2011 data). For original 2011 publication also did WH channel - sub-group expanded rapidly over time!
- Last summer results ATLAS-CONF-2013-079
- Publication will include further optimising of analysis using multivariate techniques etc..
- Presently analysing same final state but interpreting it in terms of BSM models such as the two Higgs Doublet Model (2HDM) i.e. A->Zh, where Z->ll and h->bb
- Working in much smaller group with 0-lepton final state Z->vv, plus h->tautau channel for combined paper by end of year
- bb channels bring a lot of sensitivity, and Z->ll particularly at lower m<sub>bb</sub>. Extension of range compared with CMS (CMS-PAS-HIG-13-025)
- Run-II preparation. Monte Carlo modelling, analysis model. Etc.. Focus on VH because H->bb is a run-II measurement! Continue to look for signs of BSM, 2HDM and also some H<sup>±</sup> models with similar final states etc..



# Suggestions



- No complaints 😊
- Technical/computer support/resources are excellent!
- Encourage other Post-docs to participate in the (new) RA network meetings. Discussions/invited talks on relevant topics e.g. extra training etc. to help career, applying for funding, and most recently teaching. Plus social activities.
- Do we make most of links to other groups for research e.g. MPAGS? IPPP etc.