

Global fits with



<http://hepforge.gambit.org>

Jonathan Cornell, on
behalf of the collaboration

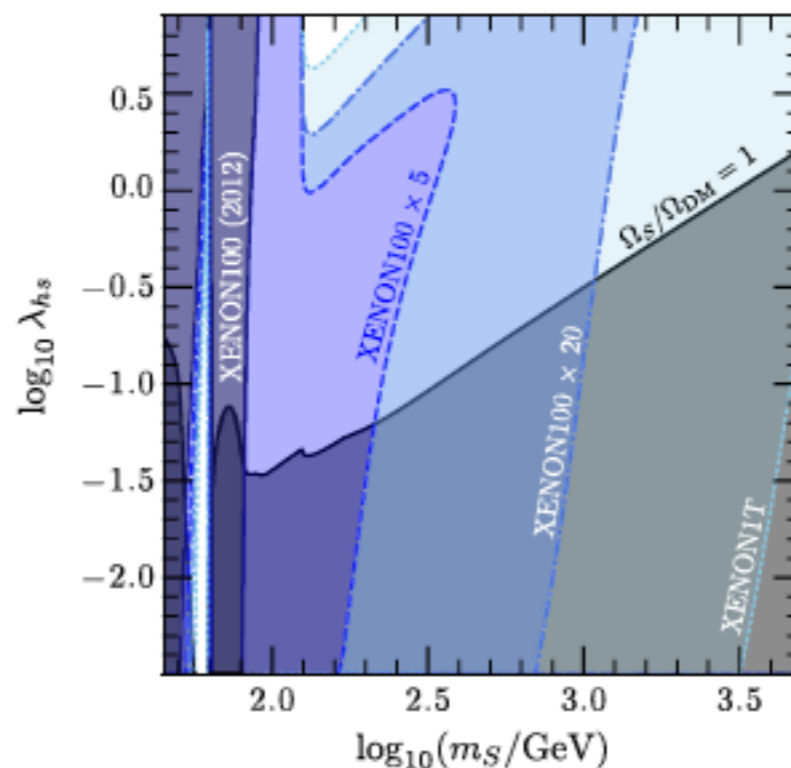
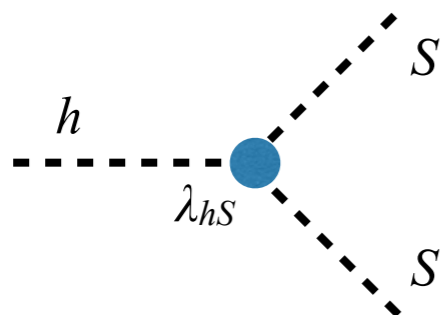


McGill

Topics in Astroparticle and Underground Physics 2017

- There is a menagerie of new physics models.
- One approach to determining their validity: overlay limits in parameter space:

Scalar Singlet DM Model



Cline, et. al. (2013)

- But what if you have more complicated parameter spaces, or have many constraints, or what if we discover something...

Another approach: Global Fits

- Calculate a combined *consistent* likelihood from all relevant experimental results:

$$\mathcal{L} = \mathcal{L}_{\text{Collider}} \mathcal{L}_{\text{DM}} \mathcal{L}_{\text{Flavor}} \dots$$

- Scan over the parameter space of theories to determine:
 1. The best fit regions of parameter space of a particular theory.
 2. Which theories give the best fit to the data.
- Existing codes to do this for BSM (*i.e.* MSSM-like) models: MasterCode, Fittino, SuperBayes, SFitter...

GAMBIT: The Global And Modular Beyond-the-standard-model Inference Tool

arXiv:1705.07908

*The design philosophy is based on the concepts of **modularity and flexibility**.*

- Large (and growing) database of models, SUSY and others
- Extensive library of observables/likelihoods that can easily be enabled or disabled for a particular scan
- Tools for simple interfacing with external codes
- Many statistical options – Bayesian/frequentist, likelihood definitions, scanning algorithms
- Massively parallel, both OpenMP and MPI
- Easy to add new models, observables, likelihoods, and scanners!

The Collaboration

P. Athron, C. Balázs, F. Bernlochner, S. Bloor, T. Bringmann, A. Buckley, M. Chrzaszcz, J. Cornell, J. Edsjö, B. Farmer, A. Fowlie, T. Gonzalo, J. Harz, S. Hoof, P. Jackson, F. Kahlhoefer, A. Krislock, A. Kvellestad, F. N. Mahmoudi, G. Martinez, J. McKay, A. Raklev, C. Rogan, R. Ruiz, P. Scott, N. Serra, R. Trotta, C. Weniger, S. Wild, M. White

30 members 11 countries 9 experiments

ATLAS, Belle-II, CMS, CTA, DARWIN, Fermi-LAT, IceCube, LHCb, Xenon

The Bits

- *DarkBit* — dark matter relic density, event rates and likelihoods for indirect and direct searches ([arXiv:1705.07920](#))
- *ColliderBit* — LHC and LEP searches for new particle production, Higgs constraints ([arXiv:1705.07919](#))
- *FlavBit* – flavor physics, particularly B decays. Likelihoods from LHCb measurements. ([arXiv:1705.07933](#))
- *SpecBit* – generic BSM spectrum object, providing RGE running, masses, mixings, etc. via interchangeable interfaces to different RGE codes ([arXiv:1705.07936](#))
- *DecayBit* – decay widths for all relevant SM & BSM particles ([arXiv:1705.07936](#))
- *PrecisionBit* – SM likelihoods, muon $g - 2$, precision BSM tests (W mass, $\Delta\rho$, etc.) ([arXiv:1705.07936](#))
- + *ScannerBit* – manages stats, sampling and optimization ([arXiv:1705.07959](#))

Bits can also be used as standalone codes.

The Bits

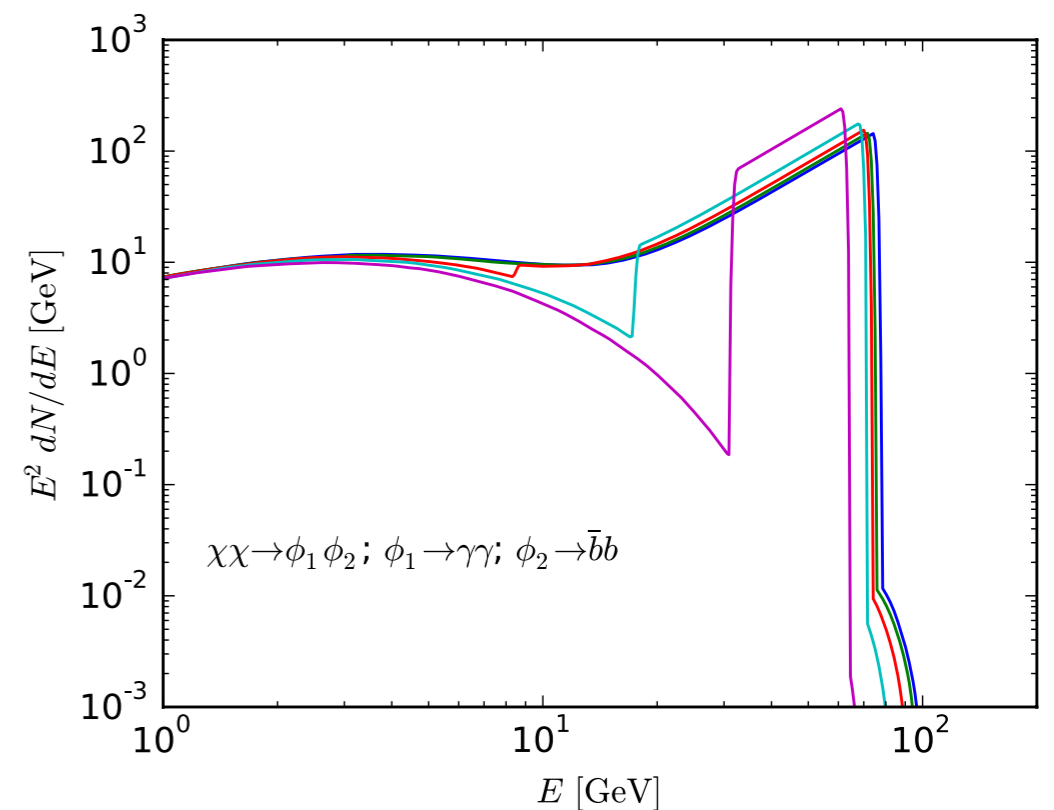
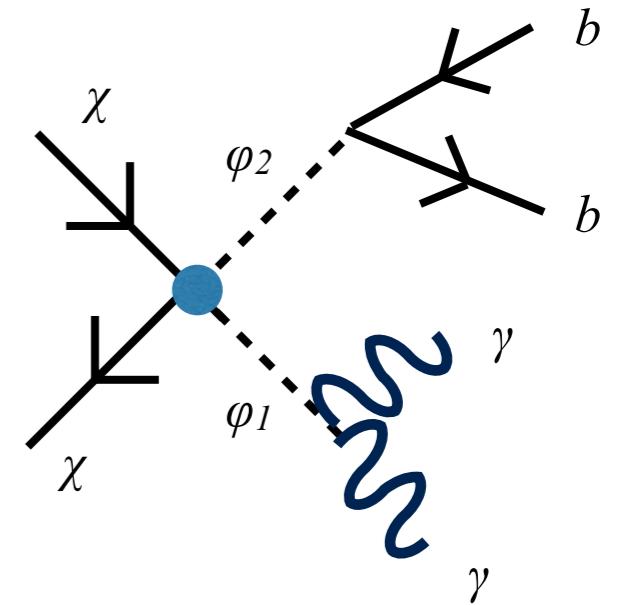
- *DarkBit* — dark matter relic density, event rates and likelihoods for indirect and direct searches ([arXiv:1705.07920](#))
- *ColliderBit* — LHC and LEP searches for new particle production, Higgs constraints ([arXiv:1705.07919](#))
- *FlavBit* – flavor physics, particularly B decays. Likelihoods from LHCb measurements. ([arXiv:1705.07933](#))
- *SpecBit* – generic BSM spectrum object, providing RGE running, masses, mixings, etc. via interchangeable interfaces to different RGE codes ([arXiv:1705.07936](#))
- *DecayBit* – decay widths for all relevant SM & BSM particles ([arXiv:1705.07936](#))
- *PrecisionBit* – SM likelihoods, muon $g - 2$, precision BSM tests (W mass, $\Delta\rho$, etc.) ([arXiv:1705.07936](#))
- + *ScannerBit* – manages stats, sampling and optimization ([arXiv:1705.07959](#))

Bits can also be used as standalone codes.

DarkBit: Indirect Detection

Gamma rays:

- Theoretical spectra calculated using branching fractions and tabulated gamma-ray yields
- Non-SM final state particles and Higgs are decayed on the fly with cascade Monte Carlo
- *gamLike* (gamlike.hepforge.org): New standalone code with likelihoods for DM searches from Fermi-LAT (dwarf spheroidals, galactic centre) and H.E.S.S. (galactic halo)

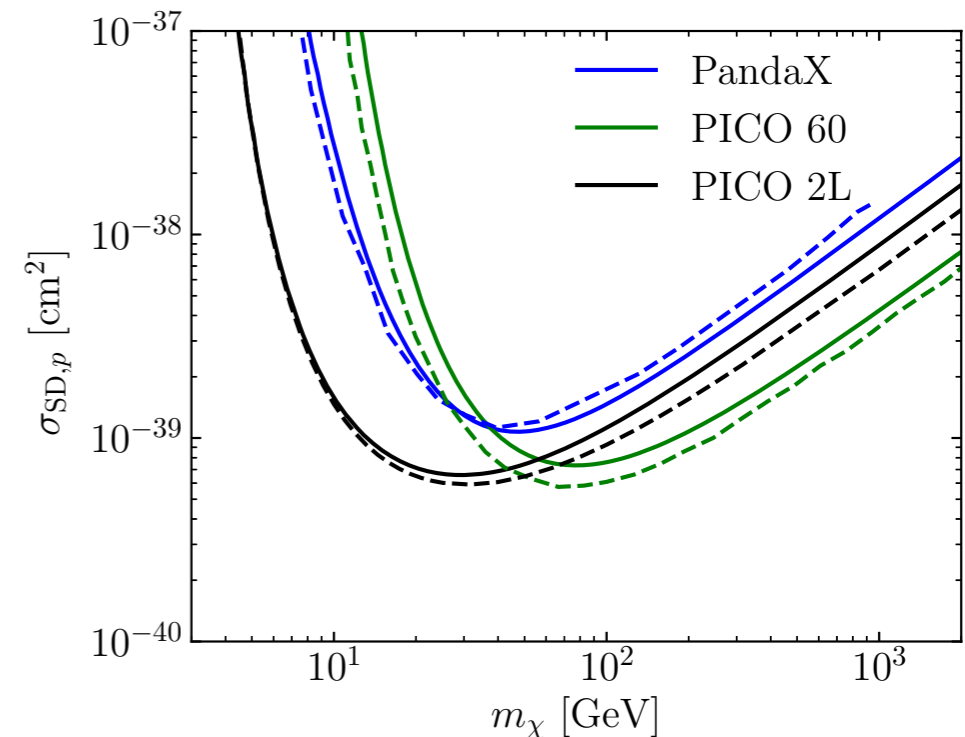
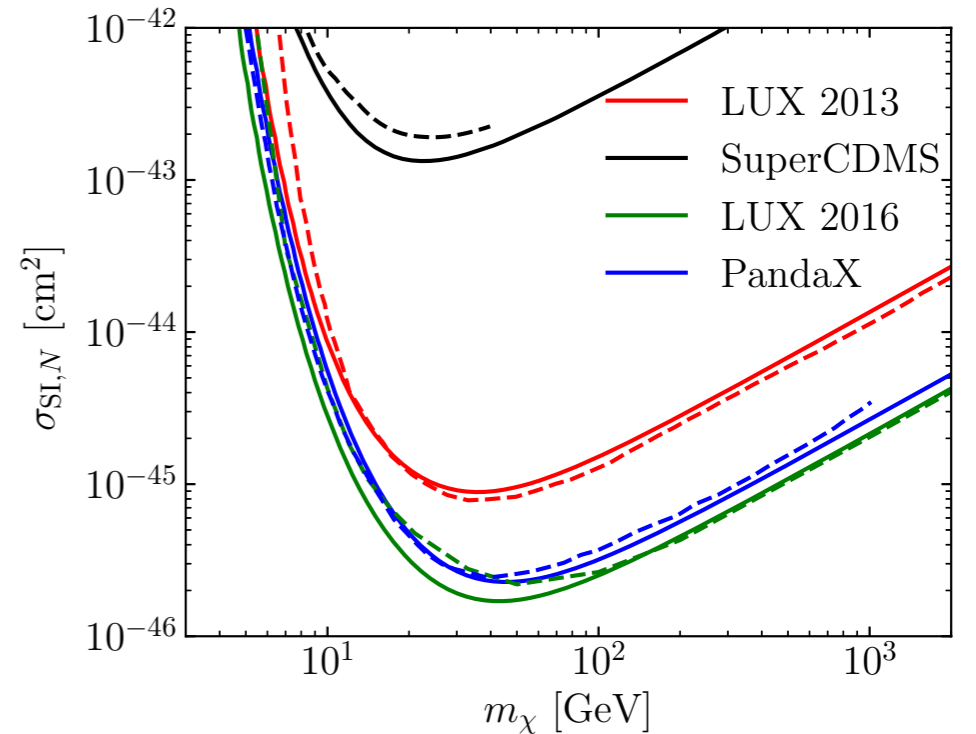


Solar neutrinos:

- Yields from DM annihilation in sun calculated by DarkSUSY. IceCube likelihoods contained in *nulike* (nulike.hepforge.org) standalone code.

DarkBit: Direct Detection

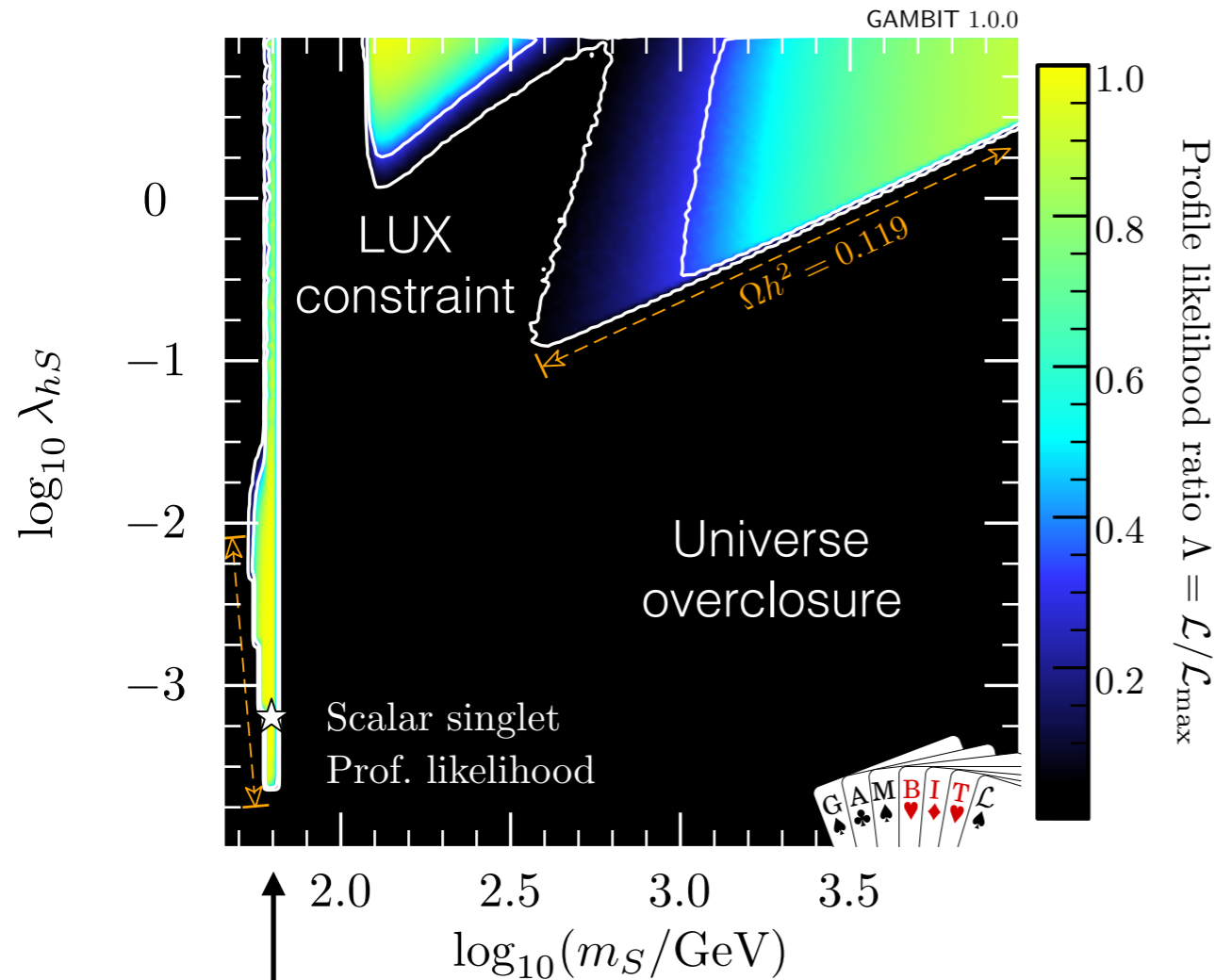
- In parallel with GAMBIT, we introduce *DDCalc* (ddcalc.hepforge.org), a tool to calculate event rates and complete likelihood functions for direct detection experiments taking into account:
 - A mix of both spin-independent and dependent contributions to the scattering rate.
 - Halo parameters (local density, DM velocity dispersion, etc.) chosen by the user.
- We currently have implemented likelihoods for Xenon(1T, 100), LUX, PandaX, SuperCDMS, PICO(60, 2L), and SIMPLE



----- Official 90% CL limit
—— DDCalc

Scalar Singlet DM

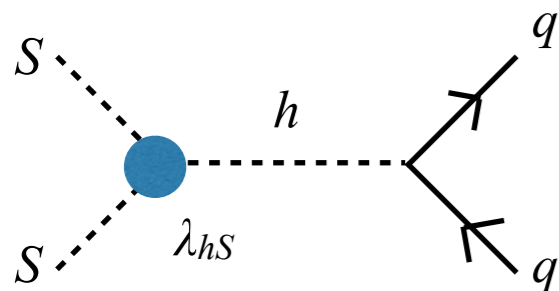
arXiv:1705.07931



Likelihoods include:

- Relic density (upper limit)
- Fermi-LAT DM searches in dwarf spheroidals
- Direct Detection (LUX, PandaX, etc..)
- IceCube limits on DM scattering from solar neutrinos
- Higgs invisible width

Higgs resonance



2 *model* parameters: 15 *nuisance* parameters:

λ_{hS}, M_S

- 10 SM ($m_h, m_q, G_F, \alpha_S, \alpha_{EM}$)
- 2 nuclear (σ_s, σ_l),
- Local DM density (ρ_0)

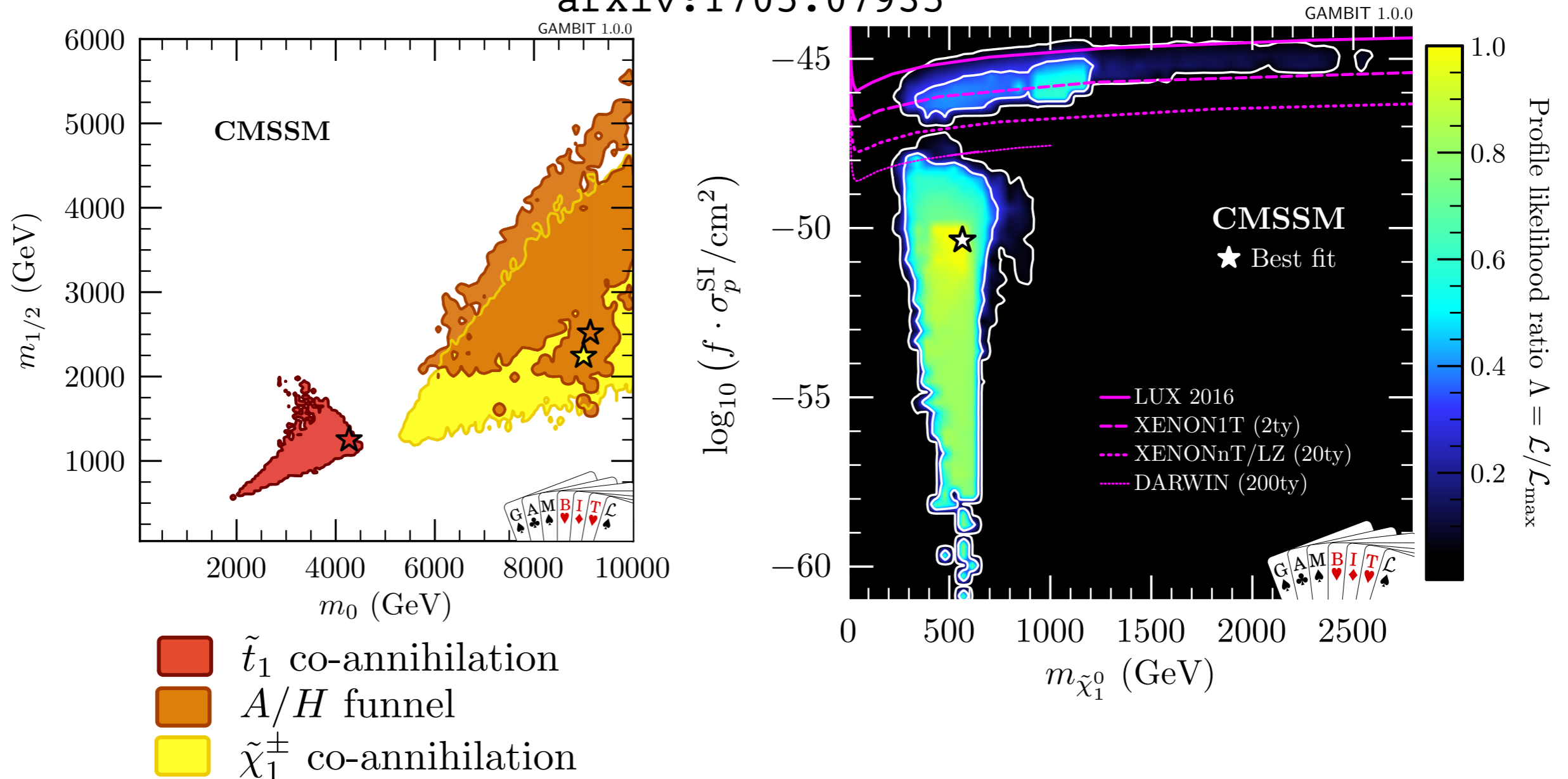
Constrained MSSM

arXiv:1705.07935

- 5 *model* parameters, defined at GUT scale:
 - $m_0, m_{1/2}$ Unified scalar, gaugino mass parameters
 - A_0 Universal trilinear coupling
 - $\tan \beta$ Higgs sector parameters
 - $\text{sign}(\mu)$
- 5 *nuisance* parameters:
 - α_s, m_t SM parameters: strong coupling and top mass
 - ρ_0 Local DM density
 - σ_s, σ_l Hadronic matrix elements
- The same *likelihoods* as for Scalar Singlet DM +:
 - LHC run 1 SUSY searches (and 0 lepton run 2 search)
 - LHC Higgs constraints
 - flavour physics limits from LHCb

Constrained MSSM

arXiv:1705.07935



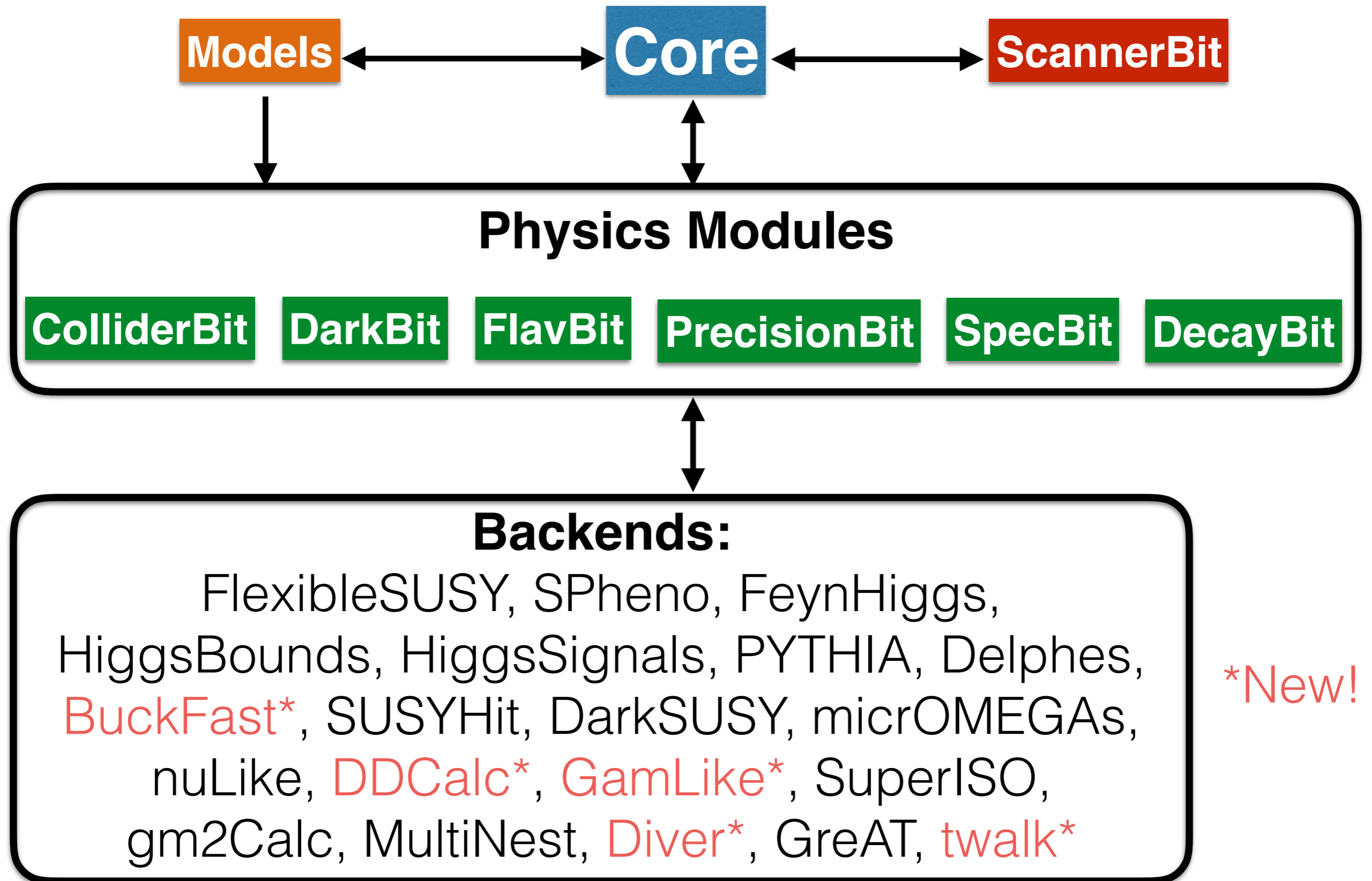
- stau coannihilation now disfavoured at 95% CL
- Future DD searches will fully probe A/H funnel and chargino co-annihilation regions

Summary and Future Plans

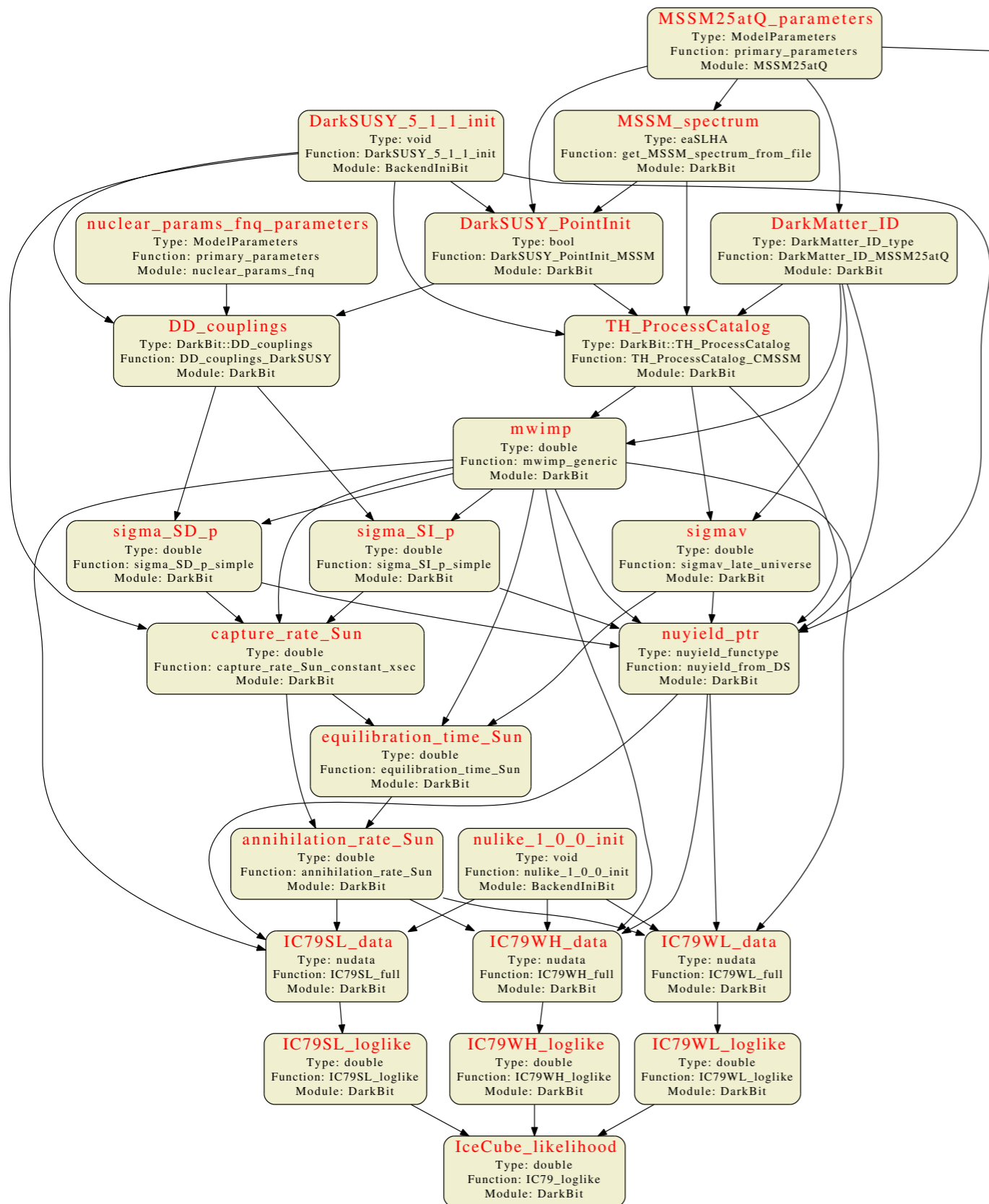
- GAMBIT, a new fitting framework for BSM theories that includes a wide range of experimental results, is now publicly released! (Download here: gambit.hepforge.org)
- We have used the code to do scans the scalar singlet DM model, and both GUT scale and weak scale (not presented here) SUSY models
- **Future Plans**
 - More models (axions, Higgs portal DM, more general MSSM's, right handed neutrinos ...) and observables
 - New modules (neutrinos and cosmology)
 - Improved integration with matrix element generators (CalcHEP and Madgraph) for easy implementation of new models

Backups

Code Structure



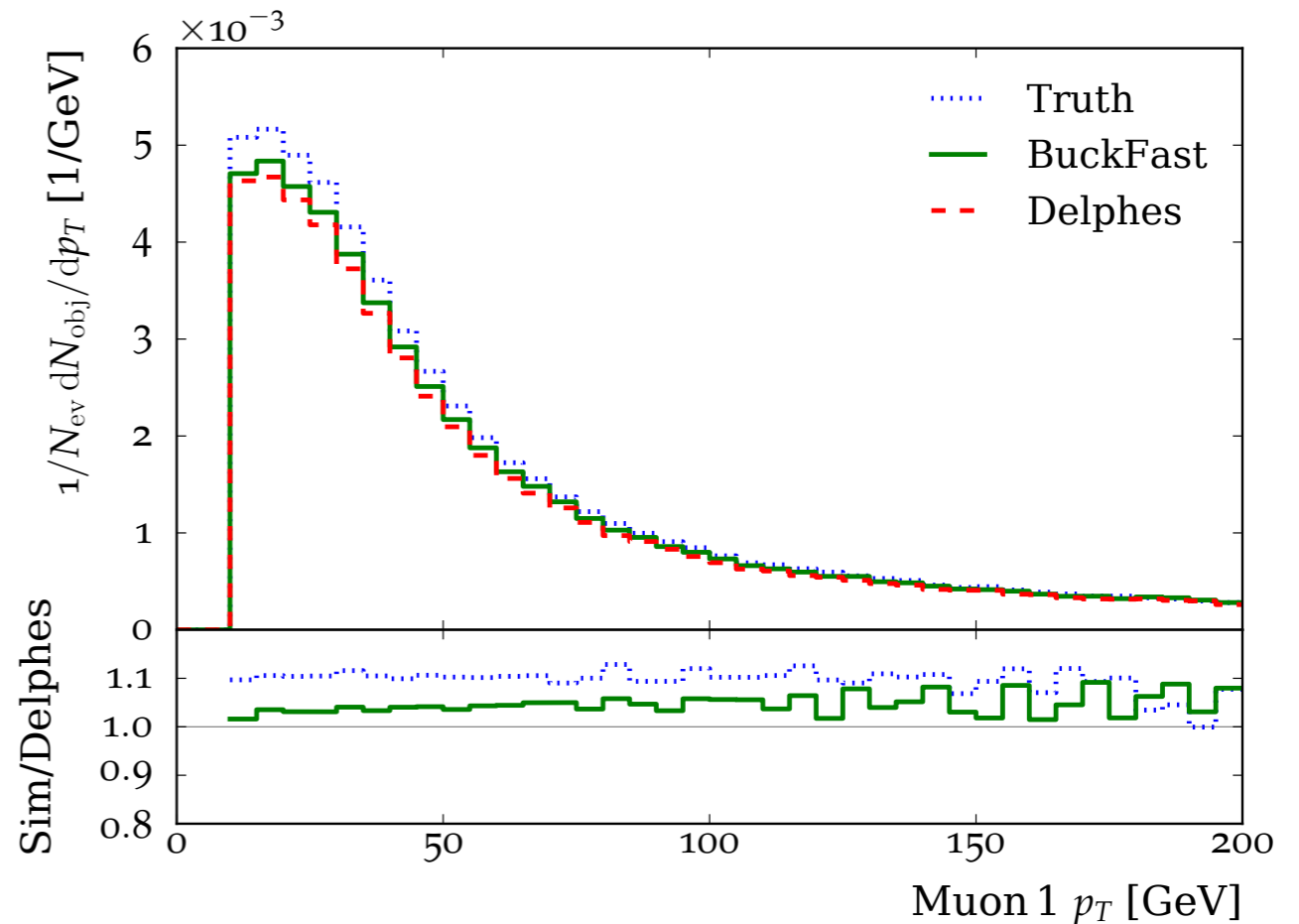
Dependency Resolution



- Automatic generation of dependency tree for calculation of likelihoods and all necessary intermediate values.
- No redundancy — each needed quantity calculated once per point in the scan.
- Can change how calculations are done by specifying rules in input file.

Collider Bit

- Full analysis chain for doing LHC recasts (focus on speed):
 - Cross section calculation and event generation using parallelized version of Pythia
 - Fast detector simulation using 4-vector smearing (BuckFast)

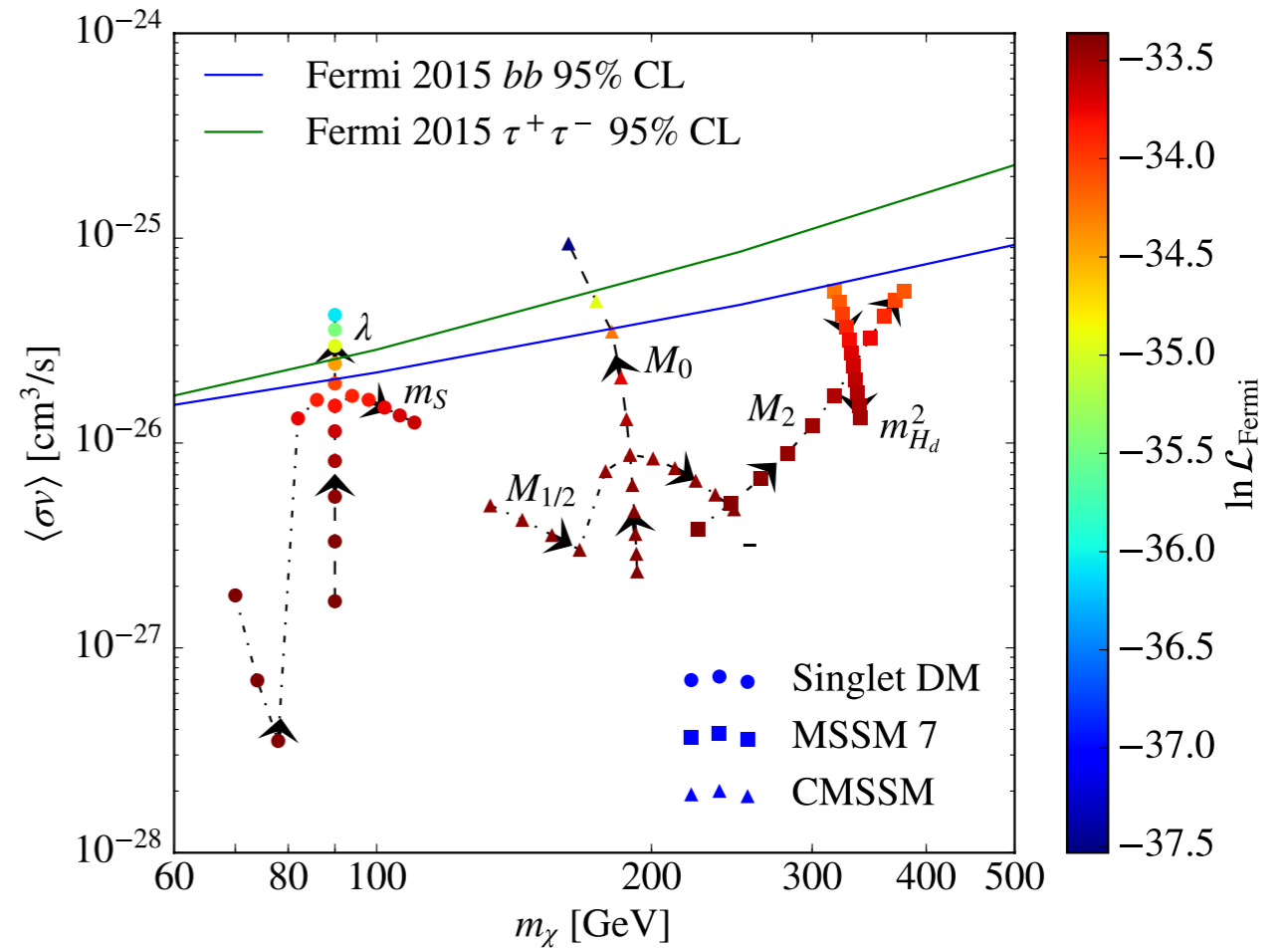
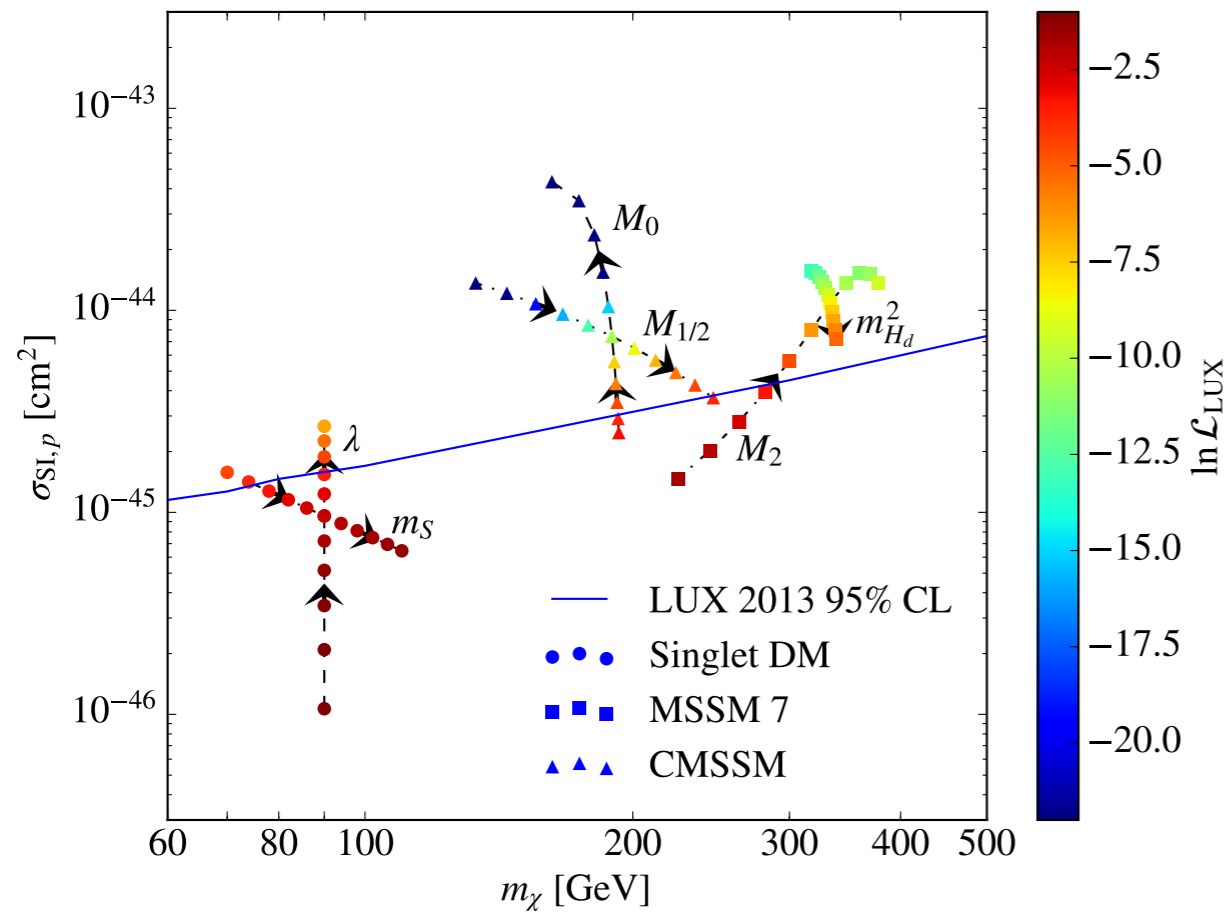


Currently includes (LHC 8 TeV):

- ATLAS SUSY searches (0 l , 0/1/2 l \tilde{t} , b jets + MET, 2/3 l EW)
- CMS multi- l SUSY
- CMS DM (monojet)
- Higgs physics from HiggsSignals and HiggsBounds

+ (LHC 13 TeV)
ATLAS 0 l SUSY
search

Dark Bit



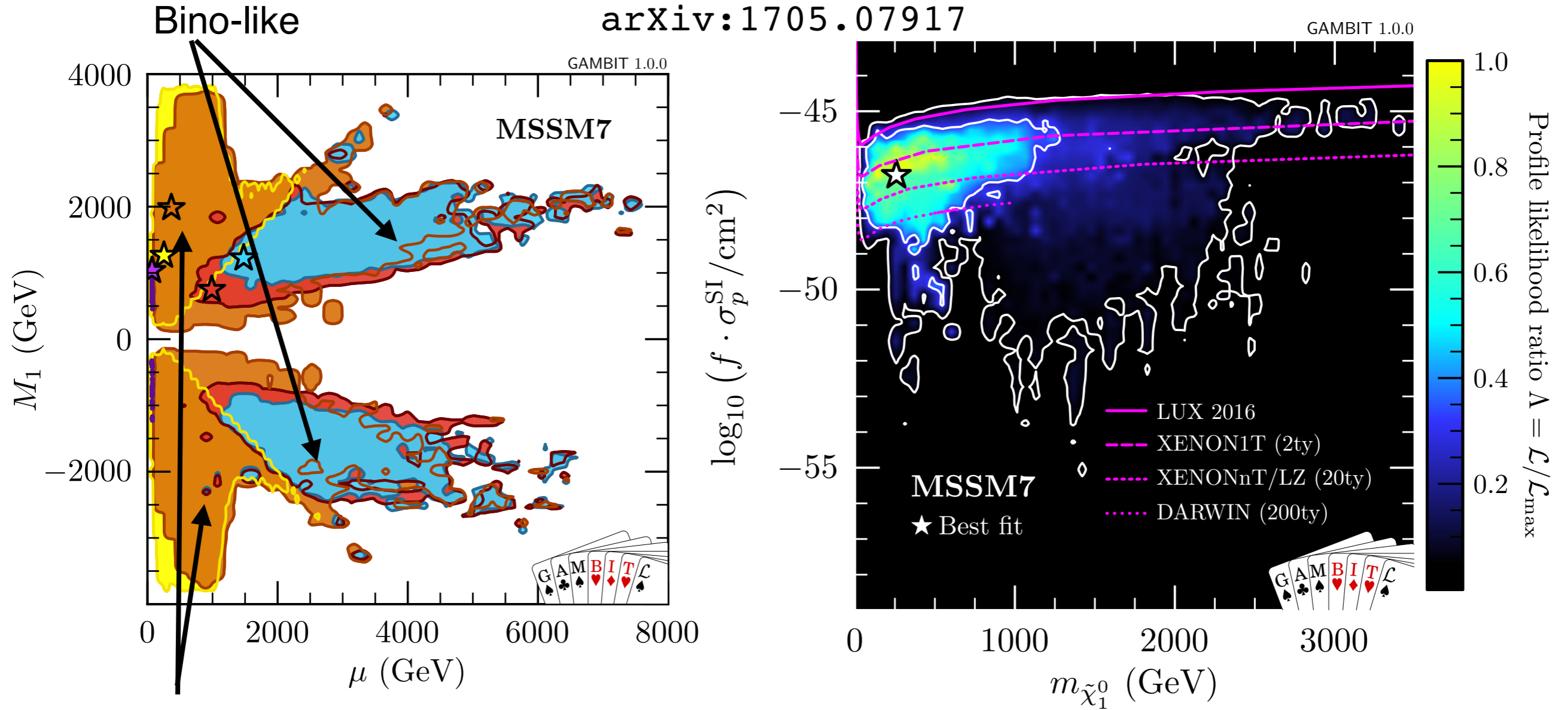
MSSM-7

arXiv:1705.07917

- 7 *model* parameters, defined at a lower energy scale (1 TeV):
 - M_2 Wino mass parameter (related to M_1 and M_3 via GUT scale relation).
 - M_{H_u}, M_{H_d} Higgs doublet mass parameters
 - A_{u_3}, A_{d_3} Trilinear couplings
 - $m_{\tilde{f}}^2$ Unified sfermion mass parameter
 - $\tan \beta$ Ratio of Higgs vevs
- All *nuisance* parameters and *likelihoods* same as before.

MSSM-7

arXiv:1705.07917



■ \tilde{t}_1 co-annihilation
 ■ A/H funnel
 ■ $\tilde{\chi}_1^\pm$ co-annihilation
 ■ \tilde{b}_1 co-annihilation
 ■ h/Z funnel

- Preference for light ($m_\chi < 1$ TeV at 68% CL)
Higgsino-like neutralino