

# Newest results from the NEWS-G dark matter experiment

Jean-Marie Coquillat

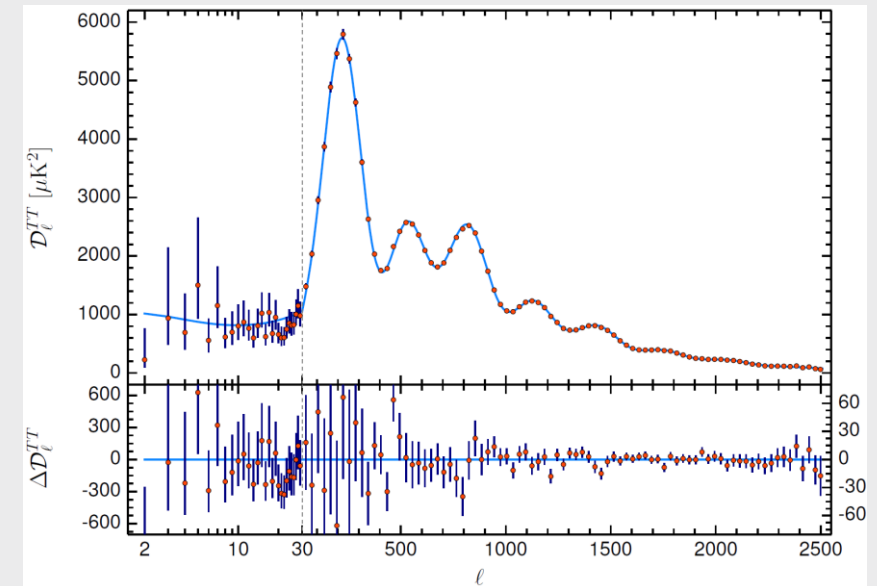
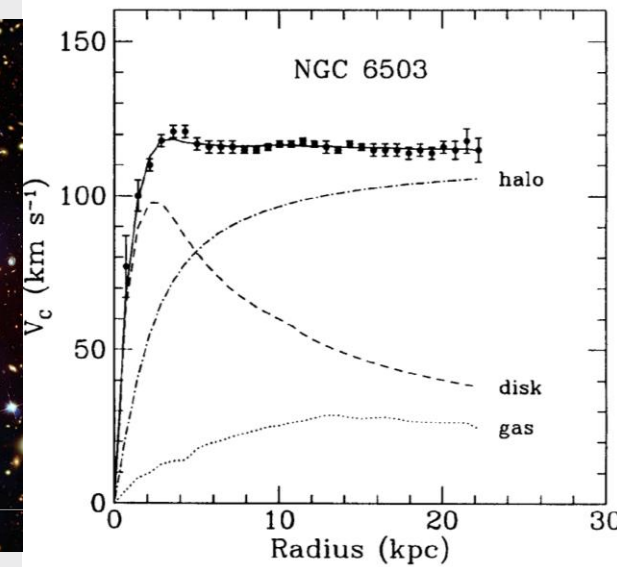
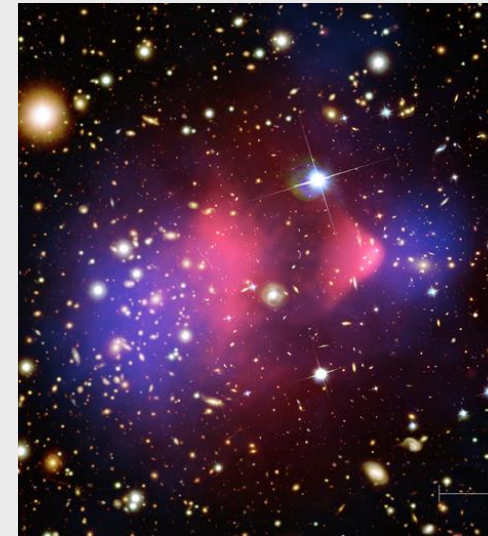
CAP conference, Fredericton

June 20<sup>th</sup>, 2023



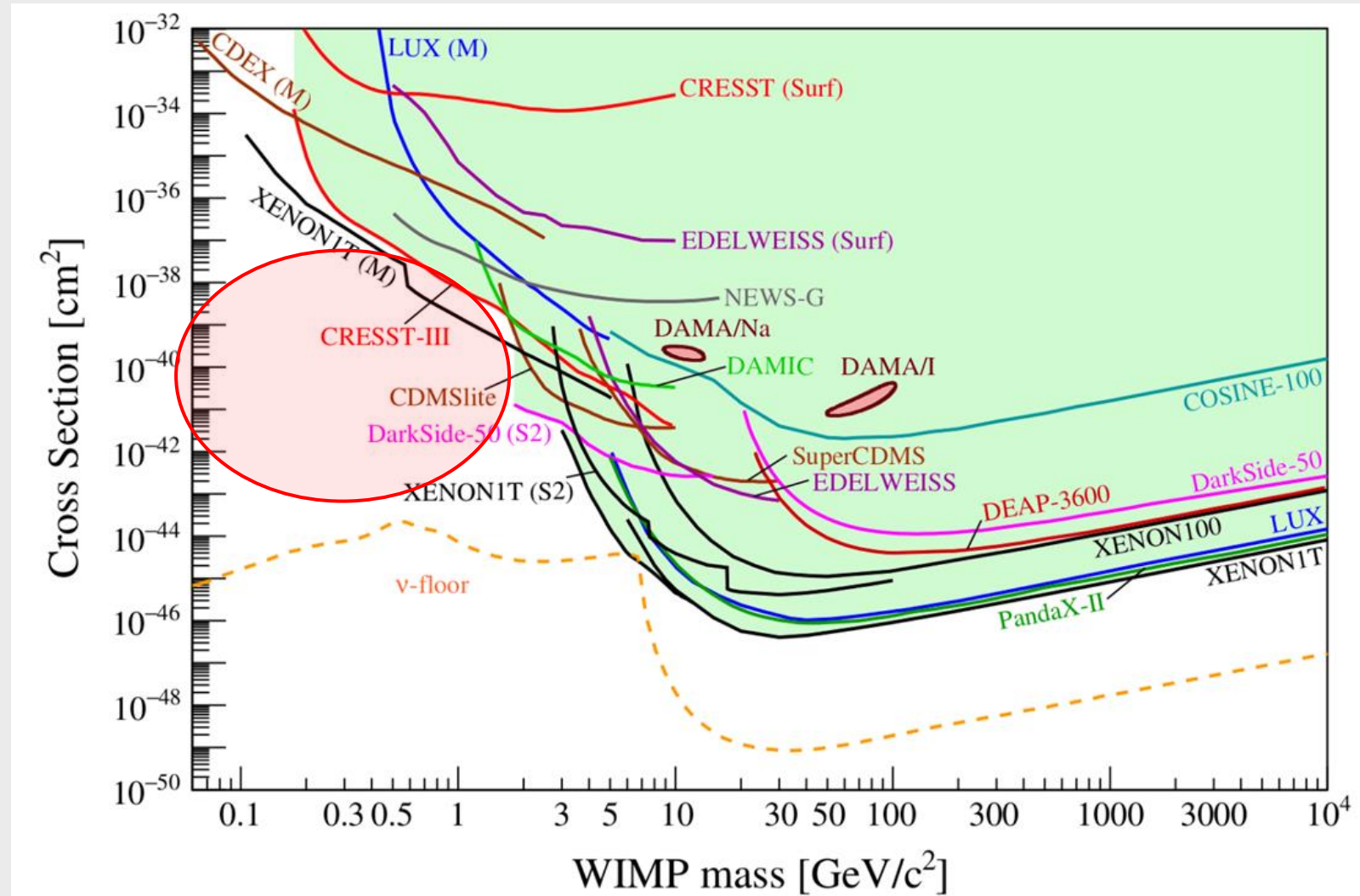
# Dark matter theory

- Dark matter (DM) evidence:
  - First Zwicky (1933): Visible mass of galaxies much lower than expectation from virial theorem.
  - Rotation curves have velocities stay higher than expected from Kepler's 3<sup>rd</sup> law.
  - Fits on the CMB show 85% of the Universe's mass as non-baryonic matter
  - Gravitational lensing shows the actual mass distribution of galaxies. Most of the Bullet cluster's mass is invisible and less interacting.



# Low mass WIMP search motivation

Given the absence of canonical WIMPs, there is motivation to look at the parameter space left at lower masses ( $\sim 0.1$ - $1$  GeV) for WIMP-like dark matter candidates.



[arXiv:2104.07634](https://arxiv.org/abs/2104.07634) [hep-ex]

# NEWS-G and SPCs

- The NEWS-G experiment uses spherical proportional counters (SPC) to search for low mass dark matter.
- SPCs are metallic spheres filled with gas, with a central anode producing a radial electric field.
- The [last dark matter limits](#) are from the SEDINE detector (60 cm diameter) at the *Laboratoire Souterrain de Modane* (LSM) in 2017.
- The latest detector, S140, is a 140 cm of diameter copper sphere currently at SNOLAB, after a short commissioning at the LSM in 2019.

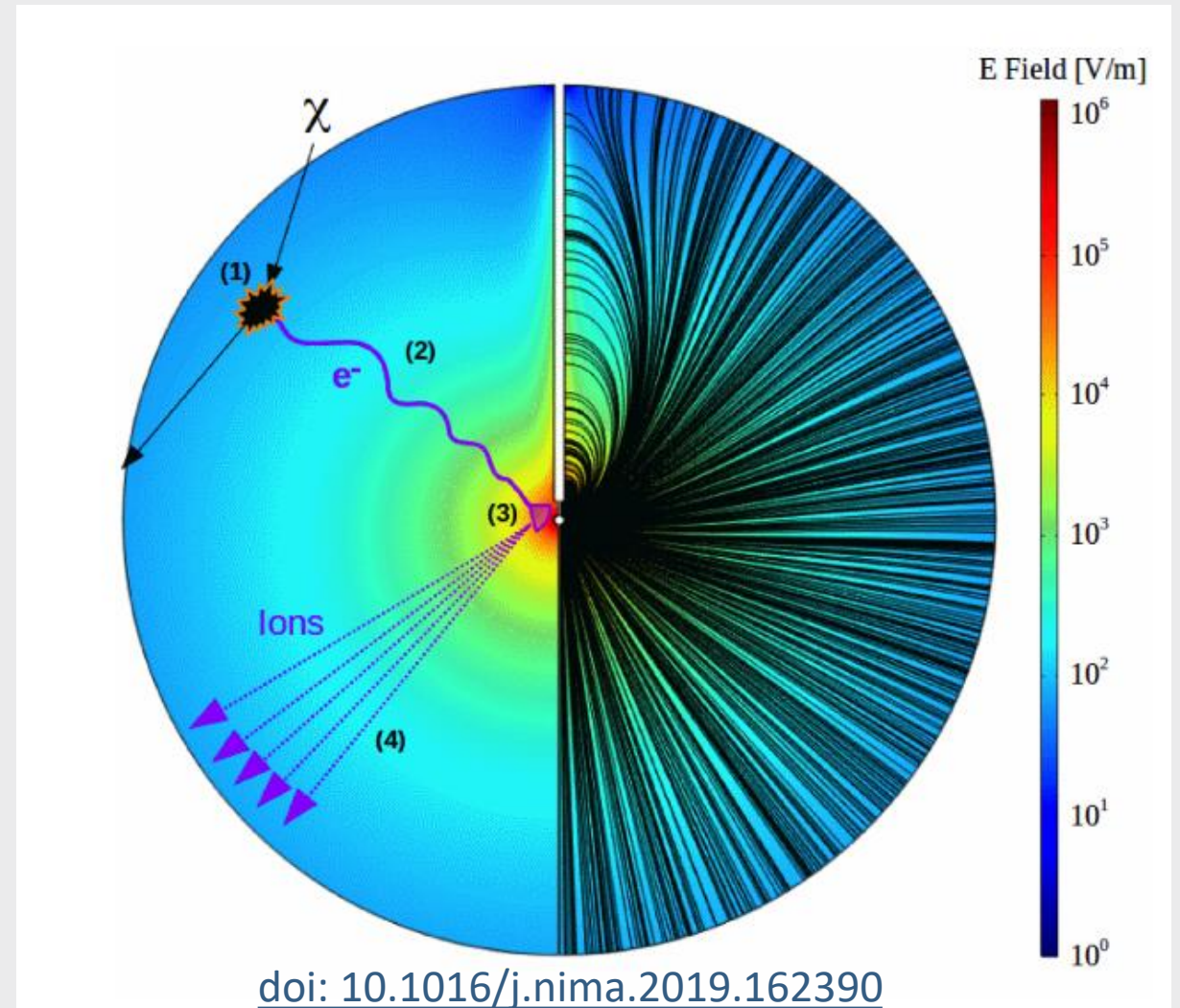
The SEDINE detector



[doi: 10.1016/j.astropartphys.2017.10.009](https://doi.org/10.1016/j.astropartphys.2017.10.009)

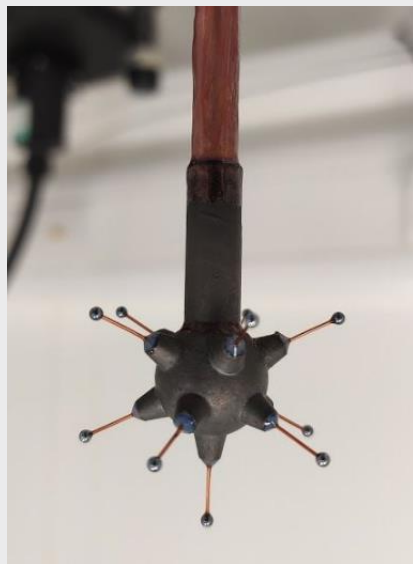
# How an SPC works:

1. Atomic recoil causes ionization of the gas.
2. Primary electrons drift towards the central anode.
3. Townsend avalanche near the anode amplifies the signal.
4. Drifting secondary ions induce a current on the anode.

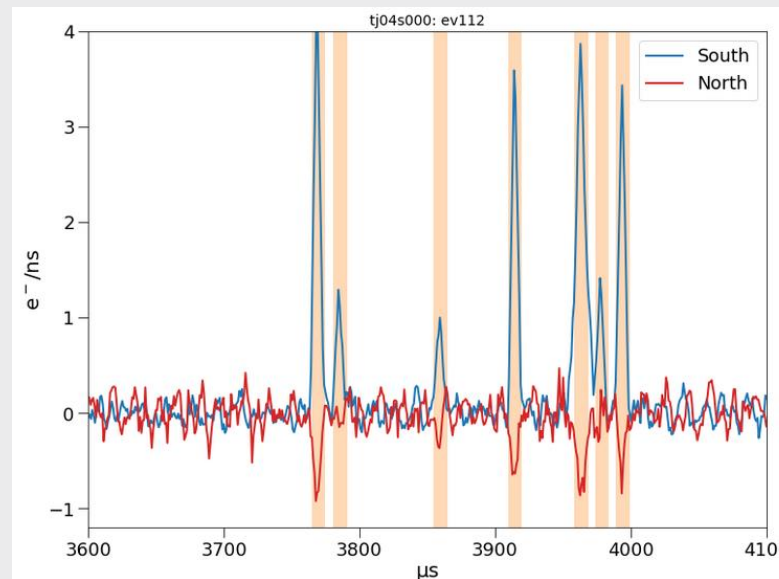


# Sensor (achinos)

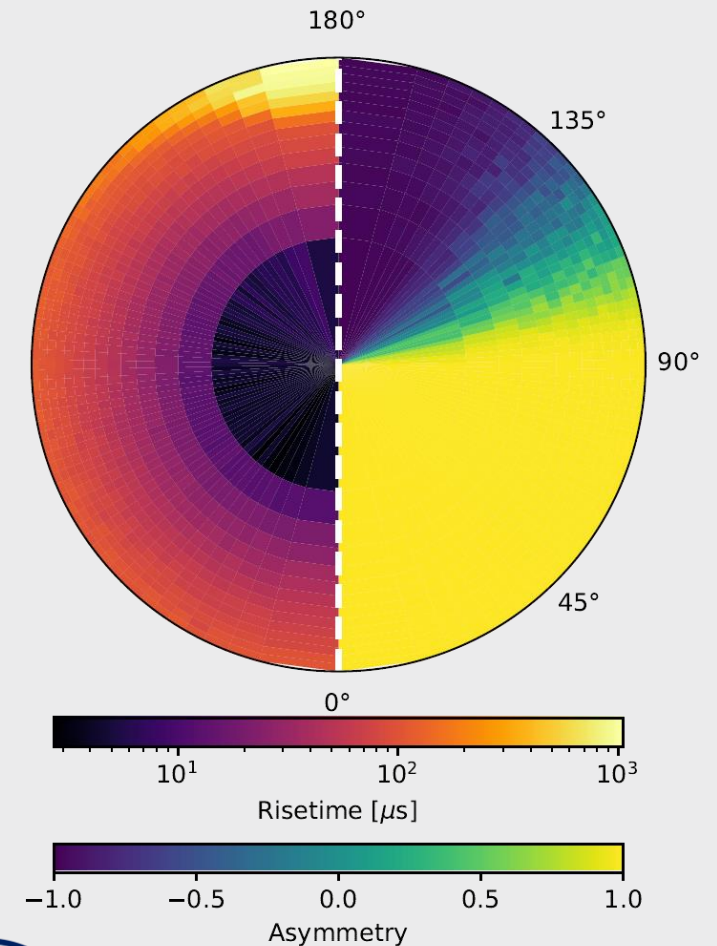
- NEWS-G now uses a multi-anode sensor that can achieve high gain while keeping a strong electric field at a high radius.
- The sensor is divided in two channels connecting the anodes of each hemisphere.
- A signal on one channel induces a negative signal on the other one (Shockley-Ramo effect).
- About 2/3 of the volume leads to the south anodes, due to the effect of the rod on the electric field.



[doi:10.1088/1742-6596/2156/1/012059](https://doi.org/10.1088/1742-6596/2156/1/012059)



[arXiv:2301.05183](https://arxiv.org/abs/2301.05183)

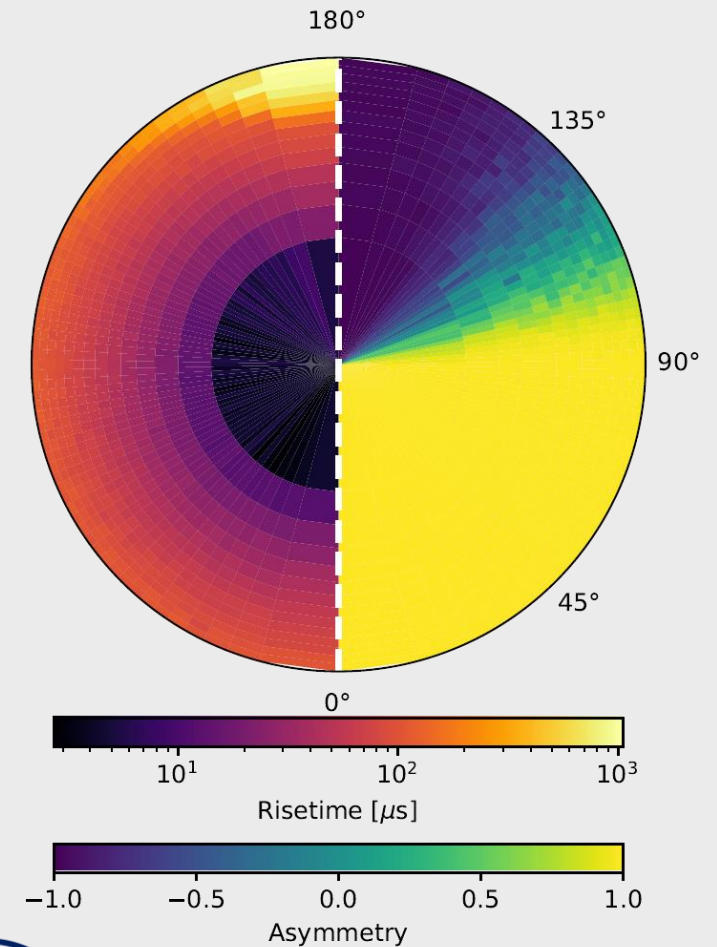
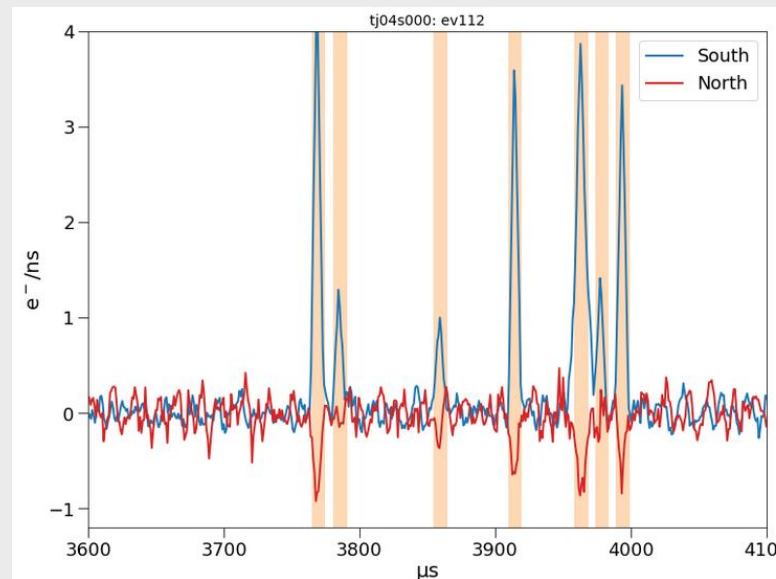
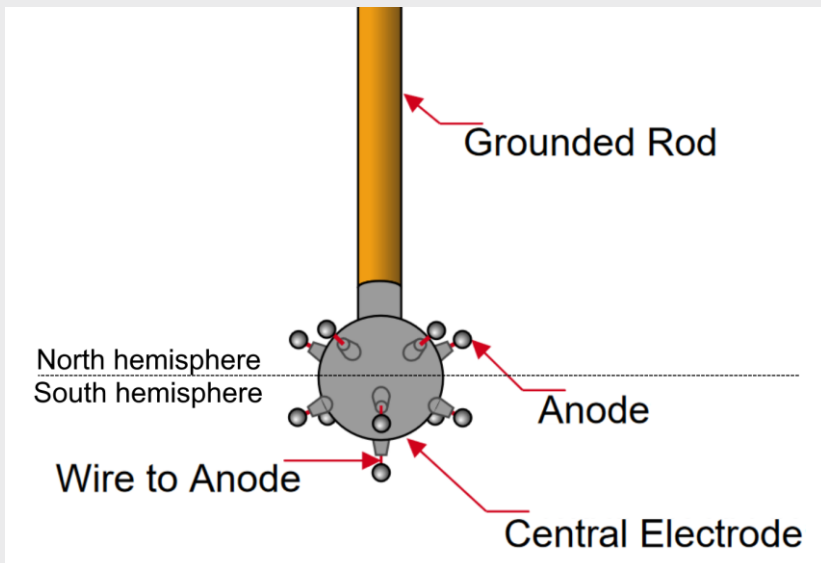


# Sensor (achinos)

- NEWS-G now uses a multi-anode sensor that can achieve high gain while keeping a strong electric field at a high radius.
- The sensor is divided in two channels connecting the anodes of each hemisphere.
- A signal on one channel induces a negative signal on the other one (Shockley-Ramo effect).
- About 2/3 of the volume leads to the south anodes, due to the effect of the rod on the electric field.

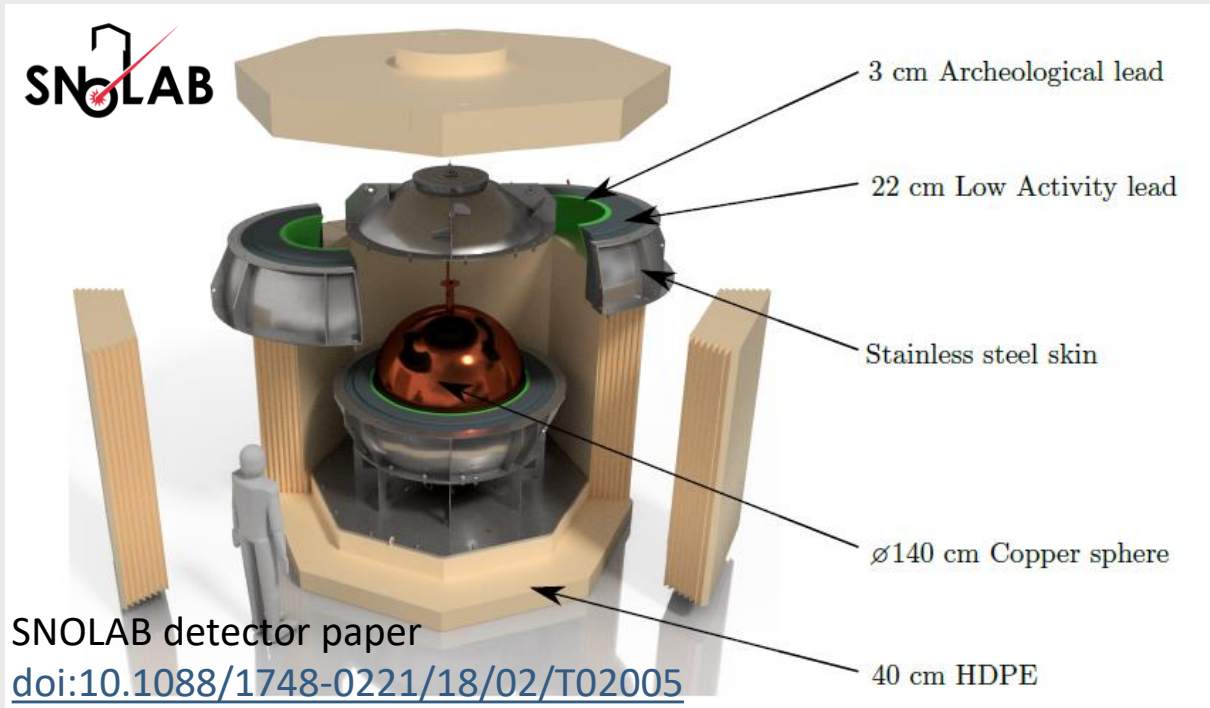
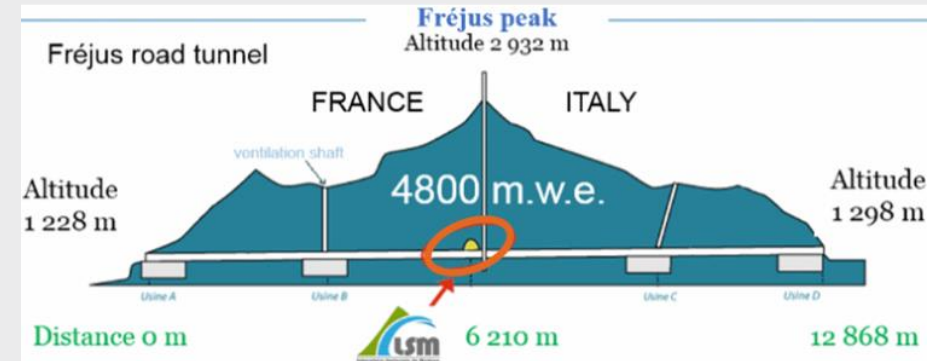
[arXiv:2301.05183](https://arxiv.org/abs/2301.05183)

[doi:10.1088/1742-6596/2156/1/012059](https://doi.org/10.1088/1742-6596/2156/1/012059)



# Shielding and data taking with S140

- The sphere is made of C10100 copper, with the inner 0.5 mm being electroformed ultra-pure copper.
- Lead, archeological lead and polyethylene (PE) make the shielding, although water was used at the LSM since the PE shield was unfinished.
- 10 days of physics data taken in 135 mbar of CH<sub>4</sub> at the LSM before the detector was shipped to SNOLAB.



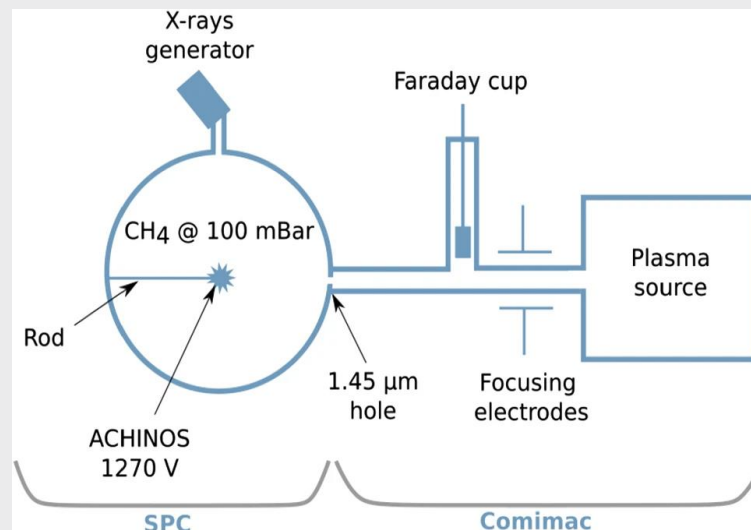
SNOLAB detector paper  
[doi:10.1088/1748-0221/18/02/T02005](https://doi.org/10.1088/1748-0221/18/02/T02005)



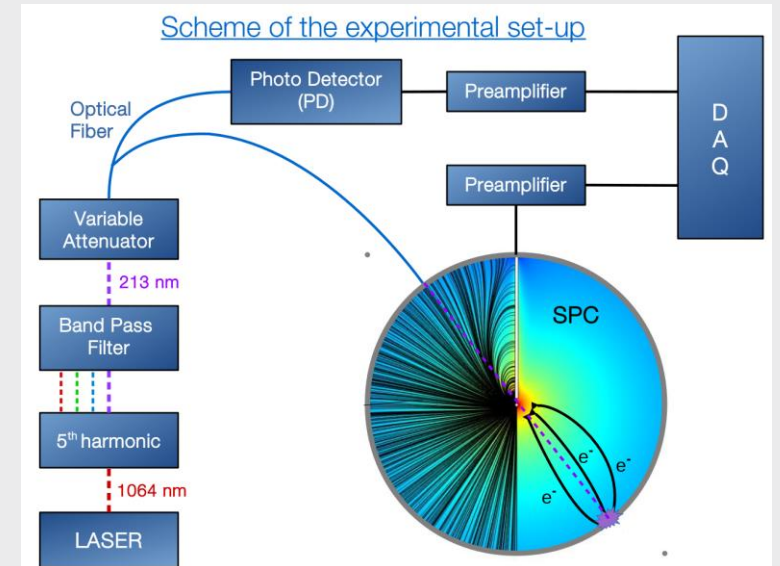
# Calibration

- A UV laser is directed at the inner copper surface of the sphere and releases electrons through the photoelectric effect. The UV light also goes to a photodetector so the laser events can be tagged.
- Some argon-37 is released inside the sphere, and the gas diffuses in the whole volume. This isotope is radioactive and has two peaks that enable energy calibration.
- W-value measured at Queen's University.
- The quenching factor was measured at COMIMAC as well as obtained from literature W-values.

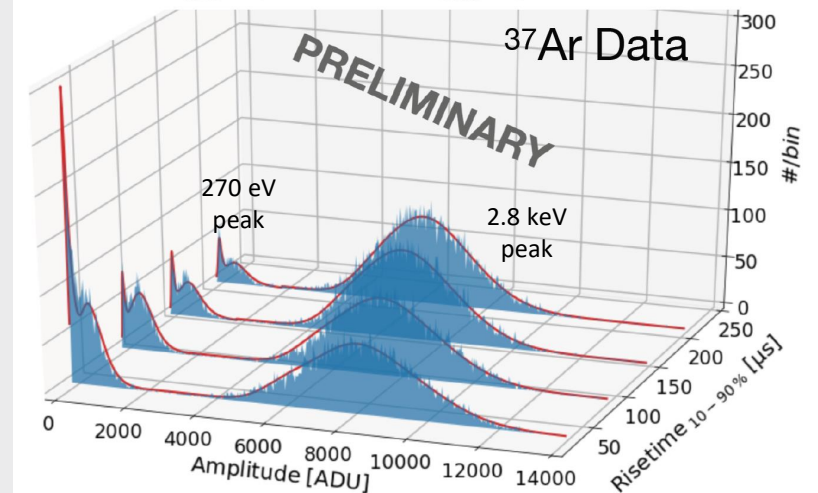
Poster on QF from Neha after this session



[doi:10.1140/epjc/s10052-022-11063-9](https://doi.org/10.1140/epjc/s10052-022-11063-9)



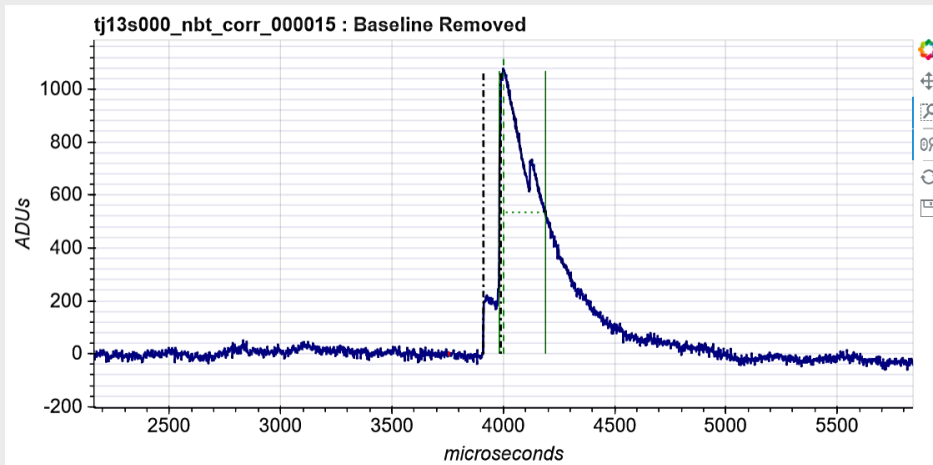
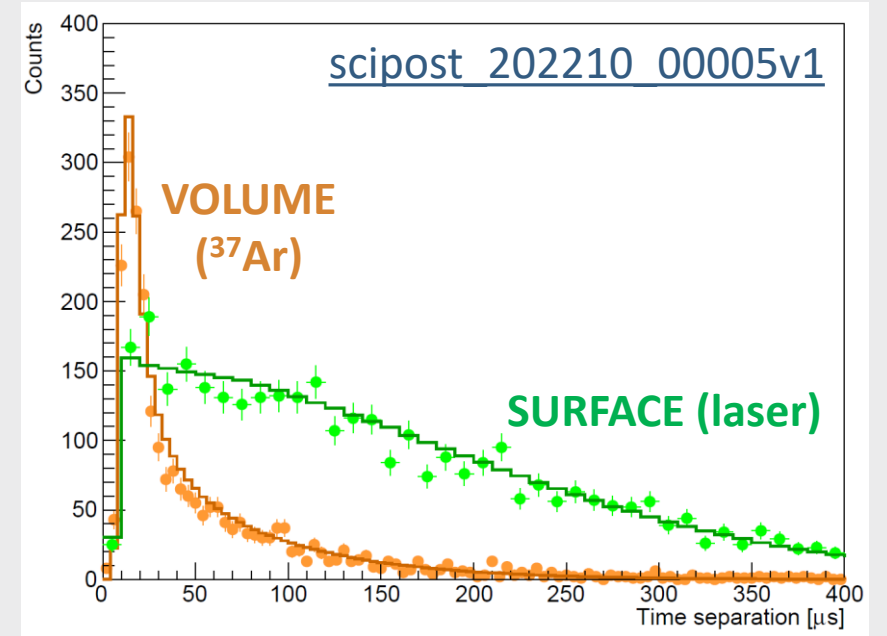
$$W_0 = 30.0^{+0.14}_{-0.15} \text{ eV}, \quad U = 15.70^{+0.52}_{-0.34} \text{ eV}, \quad F = 0.43 \pm 0.05$$



[doi:10.1088/1742-6596/2156/1/012059](https://doi.org/10.1088/1742-6596/2156/1/012059)

# Peak counting and time separation

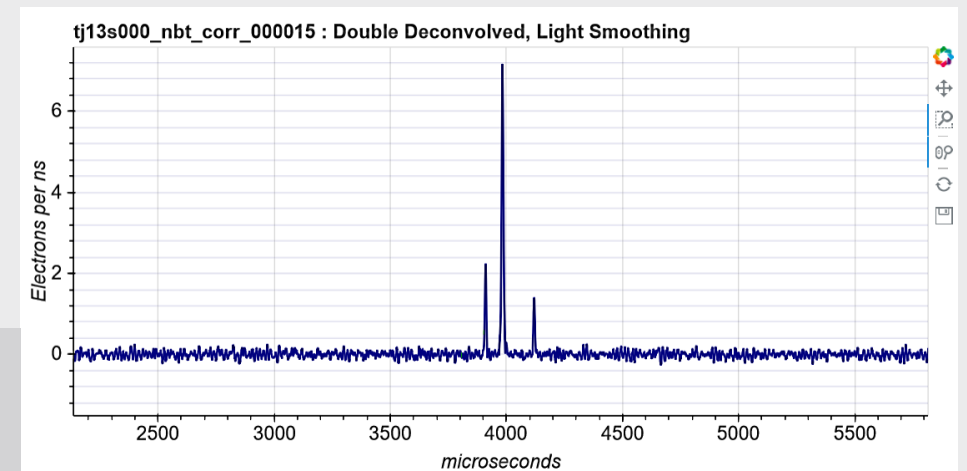
- The exponential decay of the preamplifier and the ion response are deconvolved from the raw signal.
- It is possible to count individual primary electrons.
- Surface events experience more diffusion than volume events, which causes the time separation between the first and last peak to be larger.



**DOUBLE-  
DECONVOLUTION**

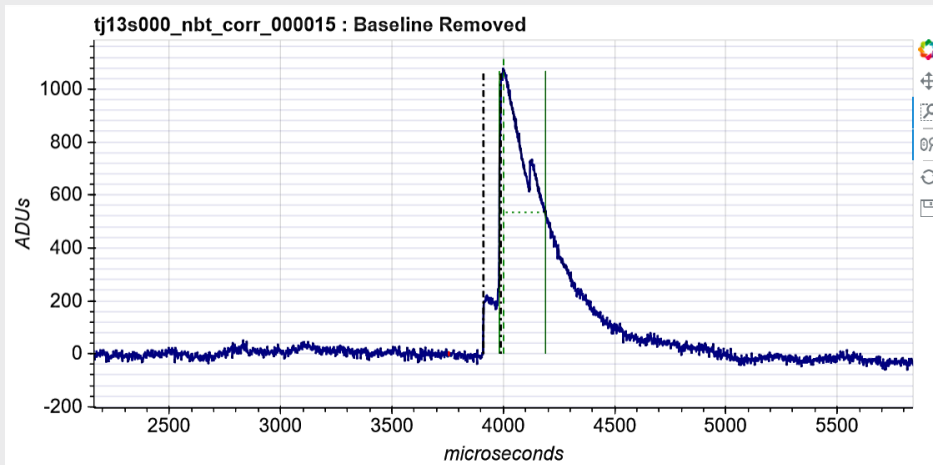
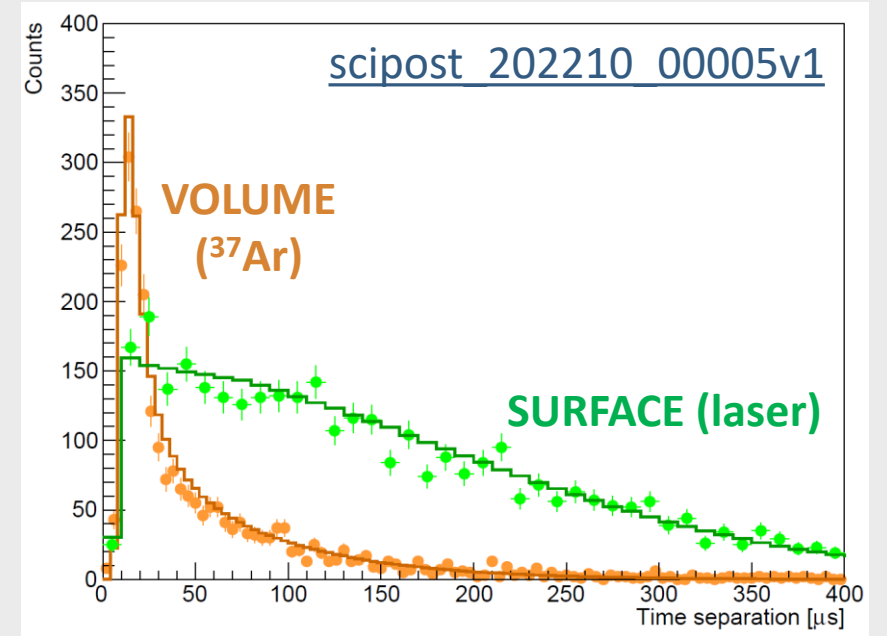


*Talk on ML alternatives  
from Noah tomorrow  
at 11:15 pm*



# Peak counting and time separation

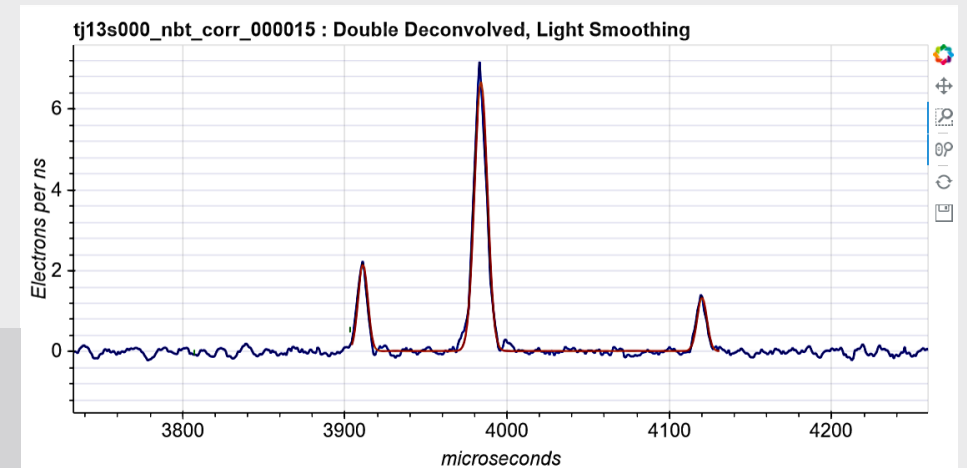
- The exponential decay of the preamplifier and the ion response are deconvolved from the raw signal.
- It is possible to count individual primary electrons.
- Surface events experience more diffusion than volume events, which causes the time separation between the first and last peak to be larger.



**DOUBLE-  
DECONVOLUTION**

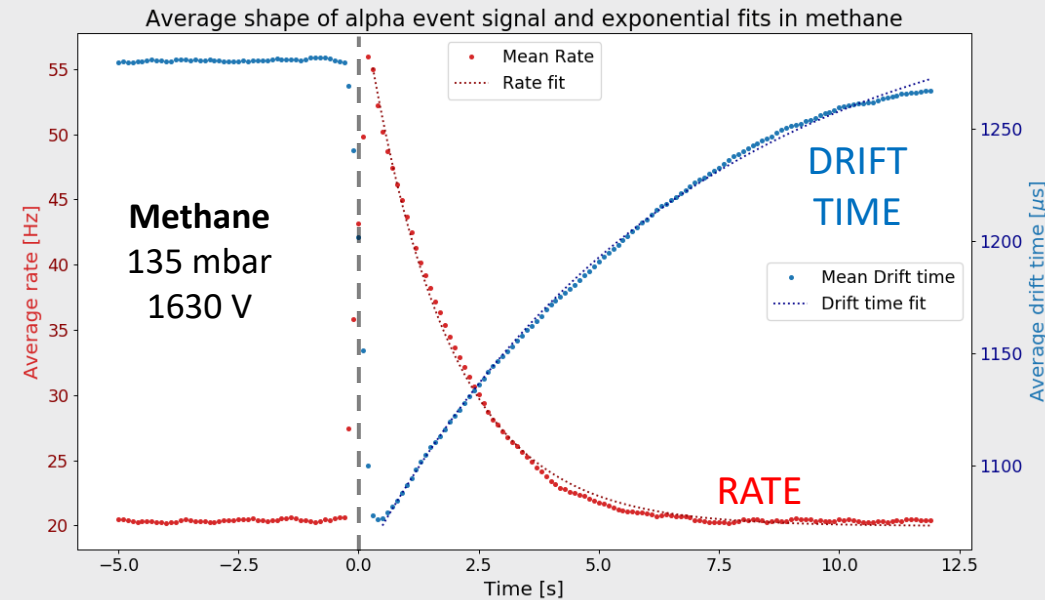
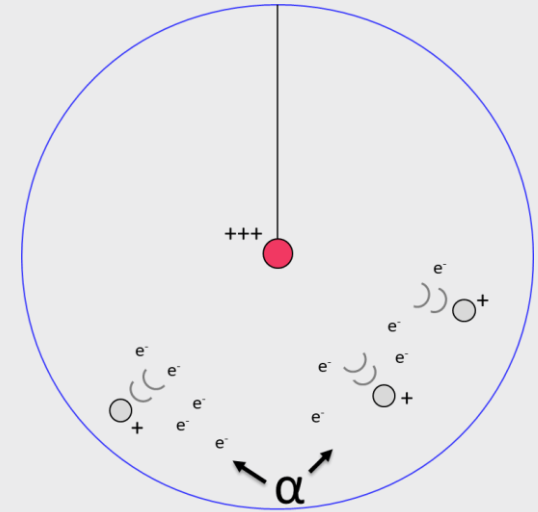


*Talk on ML alternatives  
from Noah tomorrow  
at 11:15 pm*



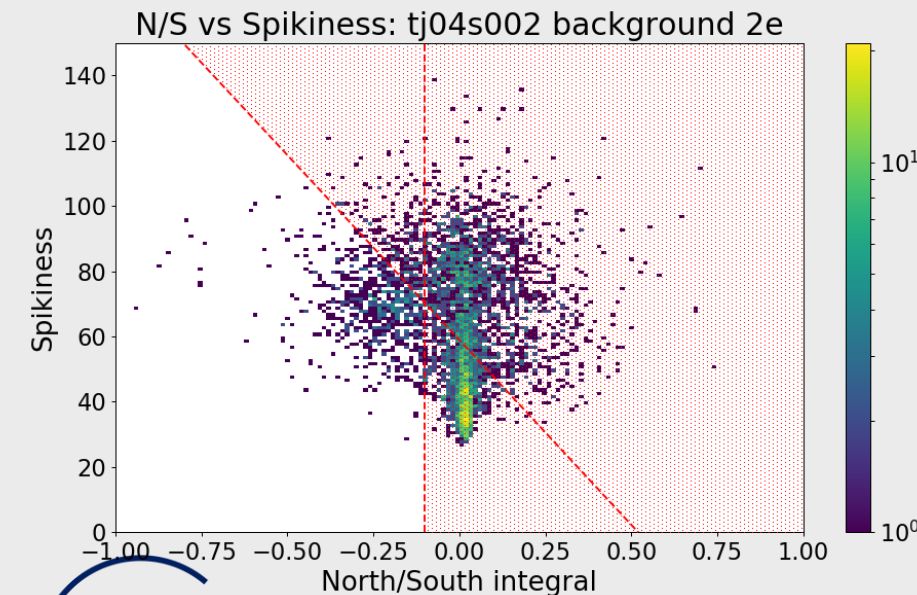
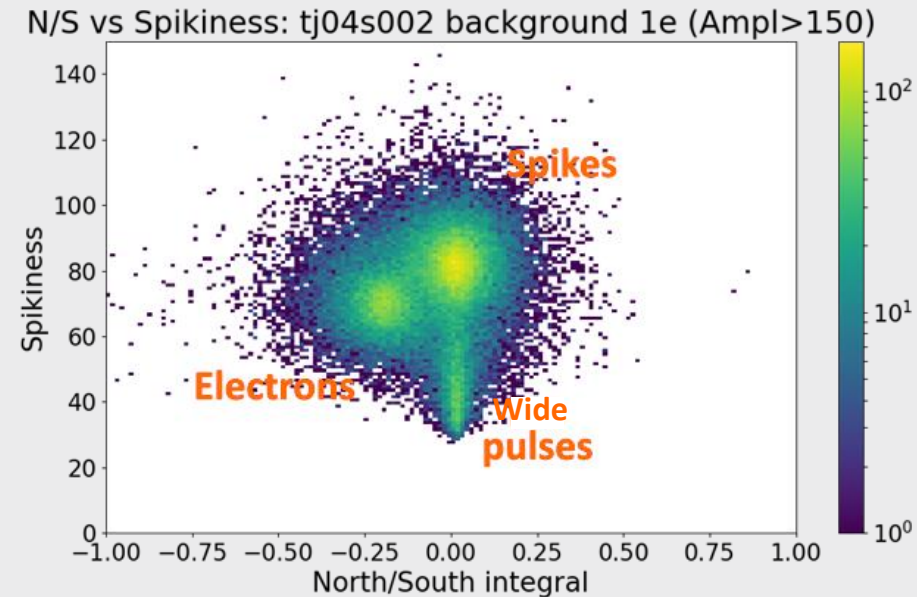
# Alpha contamination

- There is  $\sim 25$  mHz of alphas from  $^{210}\text{Po}$  contamination in the copper surface.
- Alphas ionize a lot of gas and create a space charge that disturbs the electric field, and changes the electron drift time.
- For some still unknown reason, a high rate of low energy events keep happening for around 5s after each alpha.
- We remove most of the low-energy background due to alphas with a 5s cut after each one, keeping 85-90% of the total time.



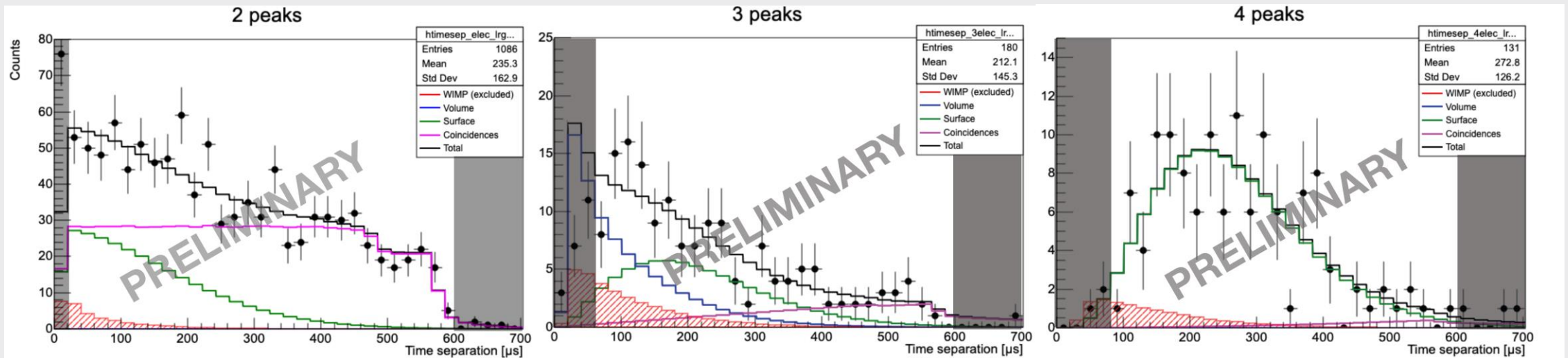
# Pulse shape discrimination

- There are spurious pulses caused by electronic discharges in the data.
- Those can be discriminated from physical events with two different methods:
  - Spurious pulses are either measurably spikier or wider than physical events.
  - Spurious pulses do not cause a negative induced pulse on the opposite channel.
- Around 95% of the spurious pulses are removed with cuts using these discriminants, while still keeping 77% of the physical events.



# Physics data fits

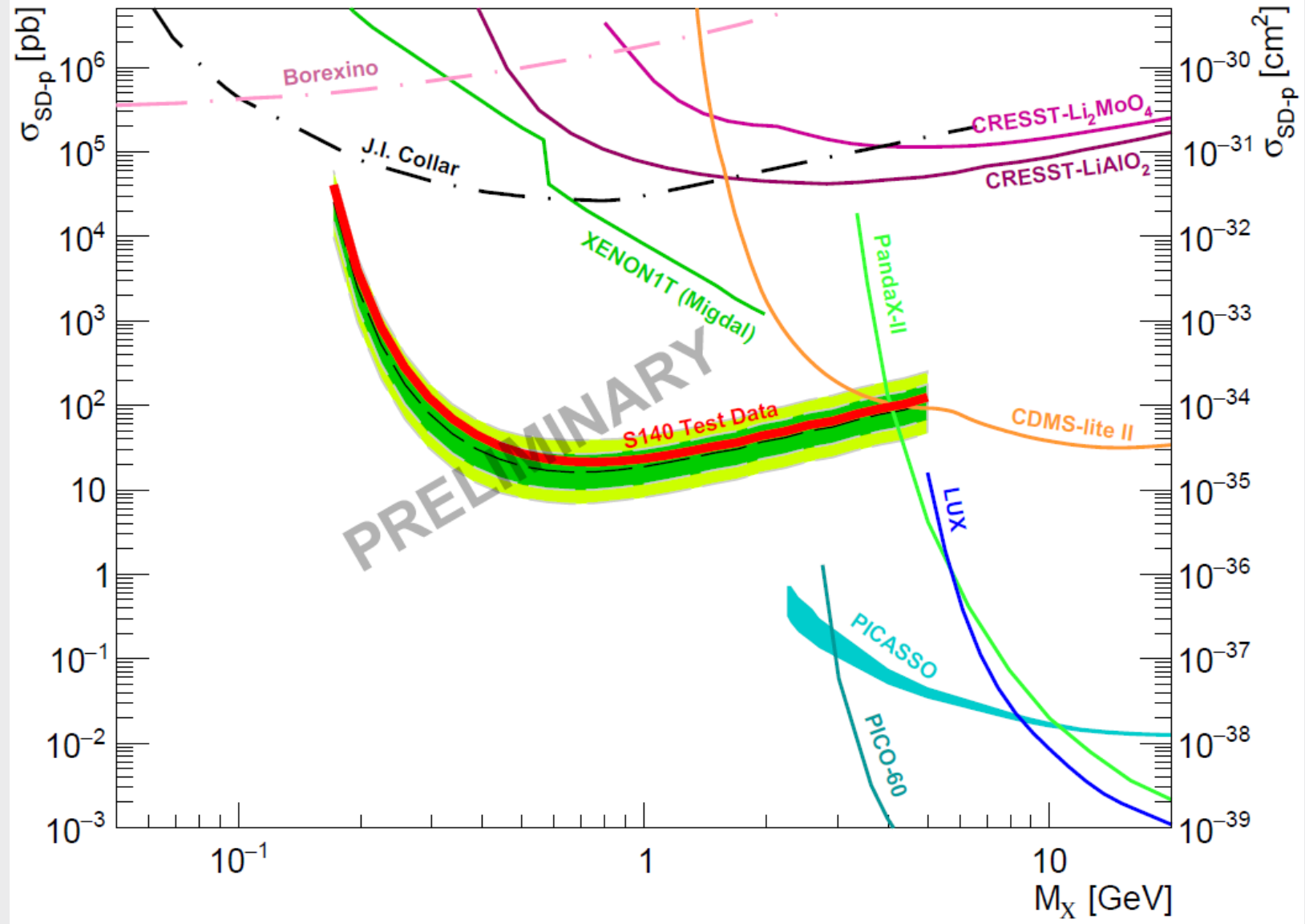
- 30% of the full data was set aside as a test data before the rest is unblinded.
- Profile likelihood fits of the test data were made for 2-3-4 peak data
- Fits with contributions from volume background, surface background, coincidences and WIMP signal.
- No significant WIMP signal was detected.



[scipost 202210 00005v1](https://arxiv.org/abs/2210.00005v1)

# Preliminary limits

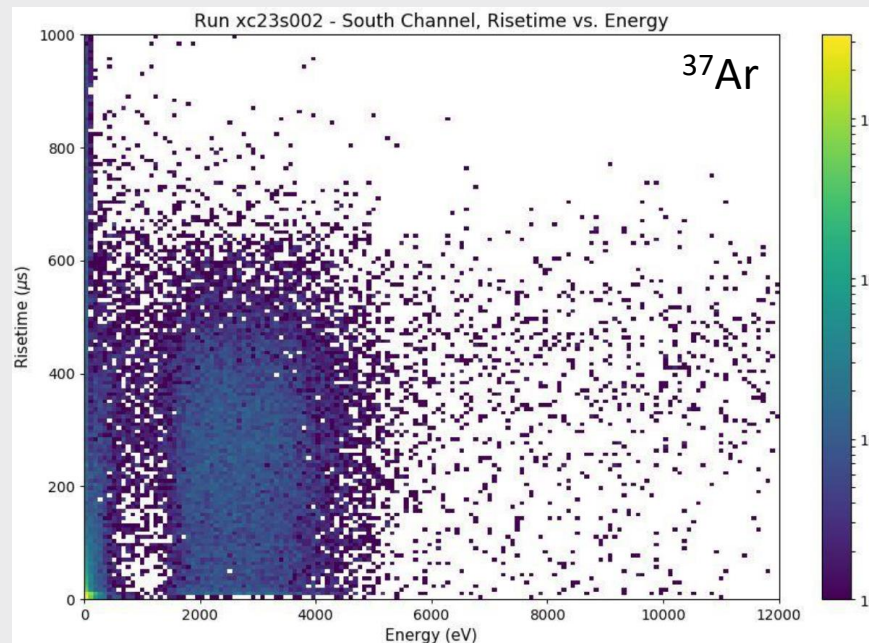
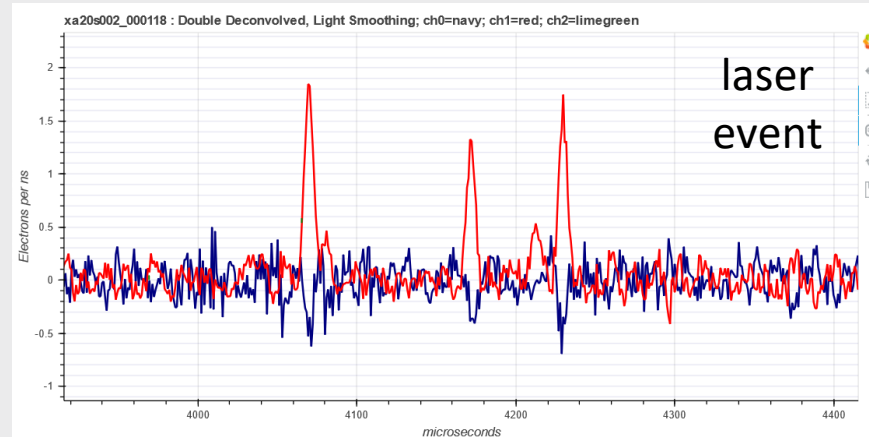
- WIMP exclusions limits with  $\sim 0.12$  kg·days of data
- Strongest constraints for the proton spin-dependent interaction in the 0.2 - 1.5 GeV range.
- Final blind data results to come in a few weeks.



[scipost 202210 00005v1](https://arxiv.org/abs/2210.00005v1)

# News from SNOLAB

- One physics data campaign taken, preparing the next one
- Still countable electrons
- Improvements from LSM:
  - Trigger on three channels (North, South, PD)
  - Reduced noise
  - No spurious pulses
  - Better gas purity
  - Neon+2%CH<sub>4</sub>, CH<sub>4</sub>, Ar+CH<sub>4</sub>, He+CH<sub>4</sub> etc.

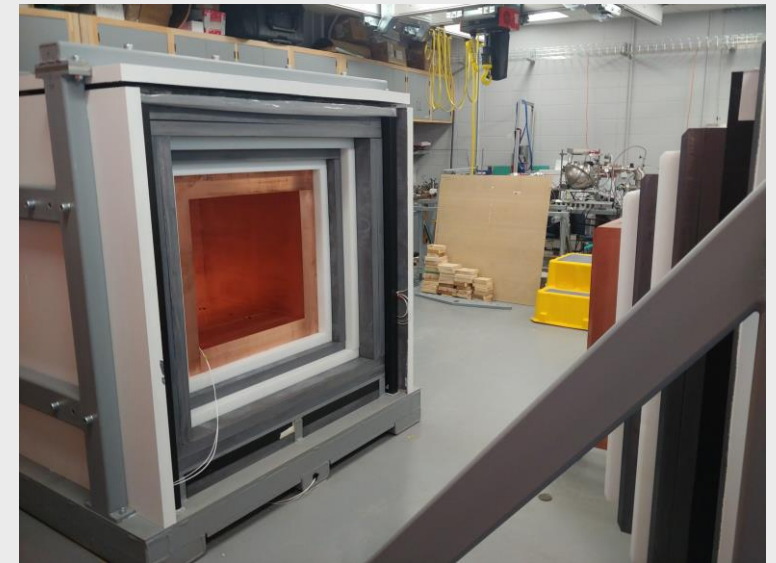
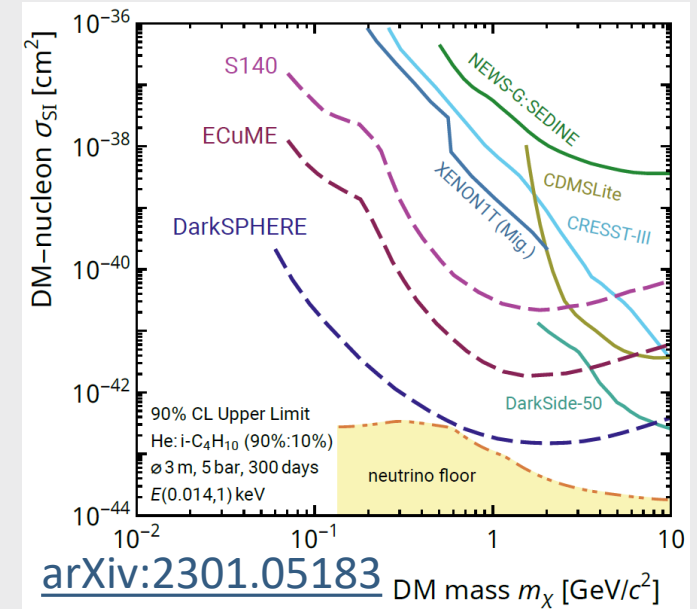




# Future projects

- ECU ME (& miniECU ME):
  - Fully underground electroformed 140 cm of diameter copper sphere in SNOLAB.  
(tests ongoing at PNNL)
- DarkSPHERE:
  - Fully electroformed 3m of diameter sphere for Boulby (UK) in a water shield.  
(under consideration)
- NEWS-G3:
  - Shield at Queen's University intended for CEvNS detection at nuclear reactors.  
(shield completed, started testing)

*Talk on G3 from Georgios tomorrow at 4:30 pm*



# Conclusion

- NEWS-G and SPCs well suited for low mass dark matter search.
- LSM data able to set new SD-p WIMP constraints with CH<sub>4</sub>.
- Currently taking physics data at SNOLAB with many improvements.
- Promising future projects in the works.



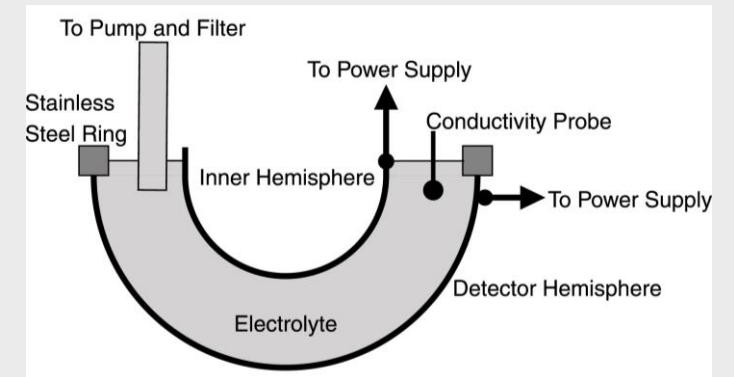
# Thank you!



# Extra slides

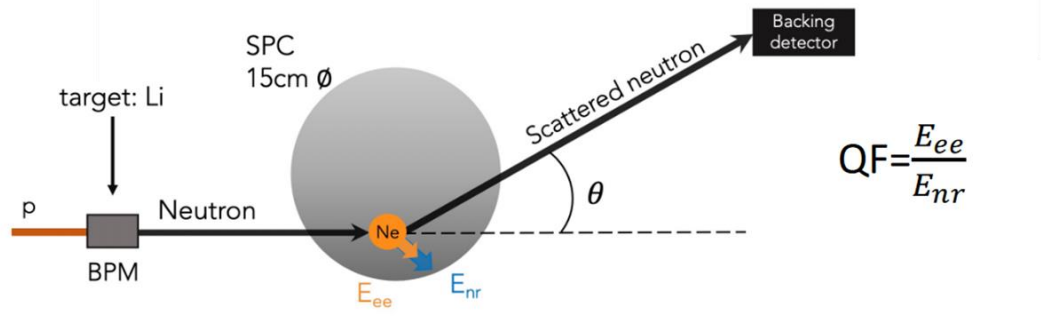


# Making the sphere, electroforming, etching

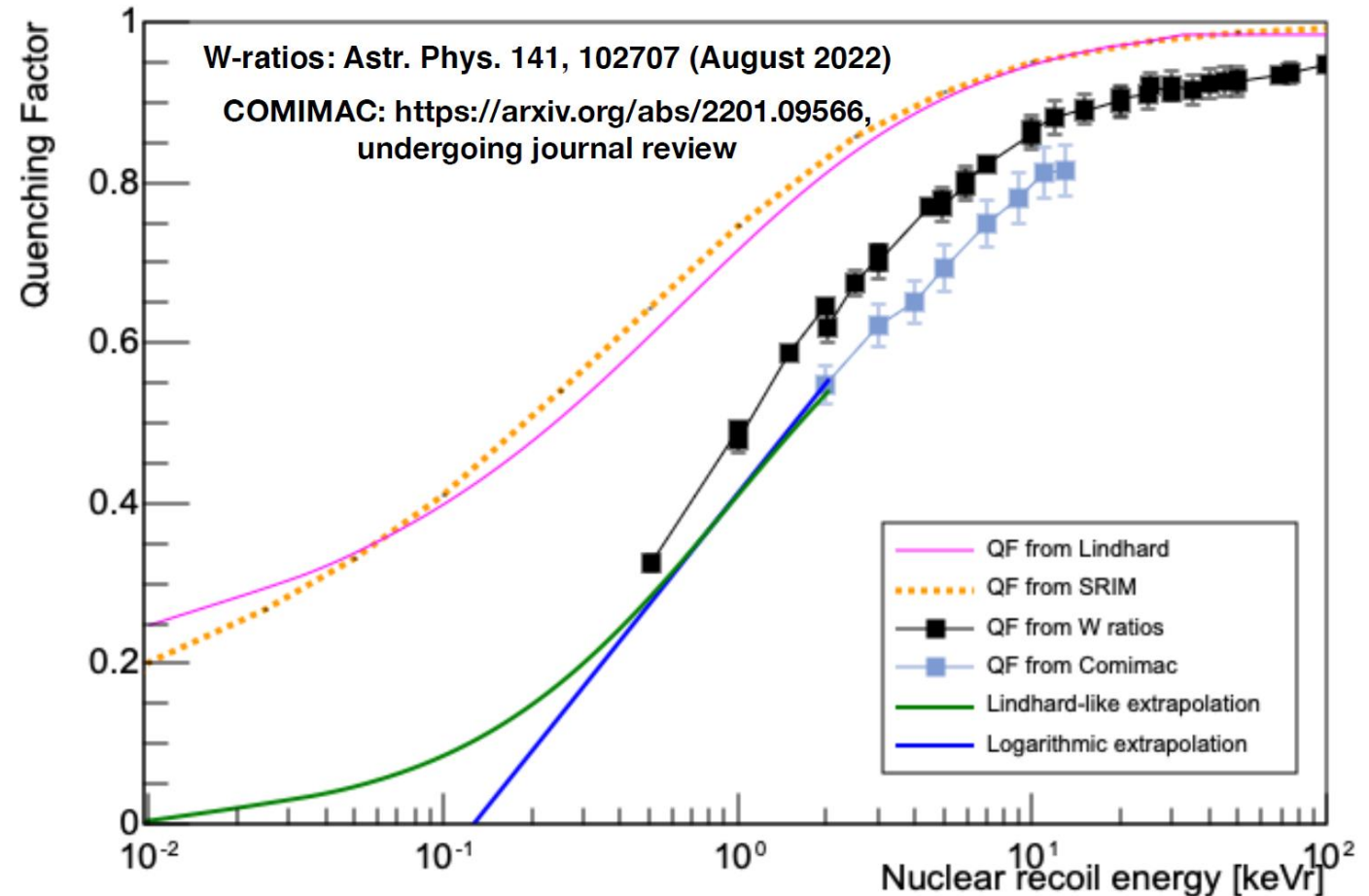


# Quenching factor

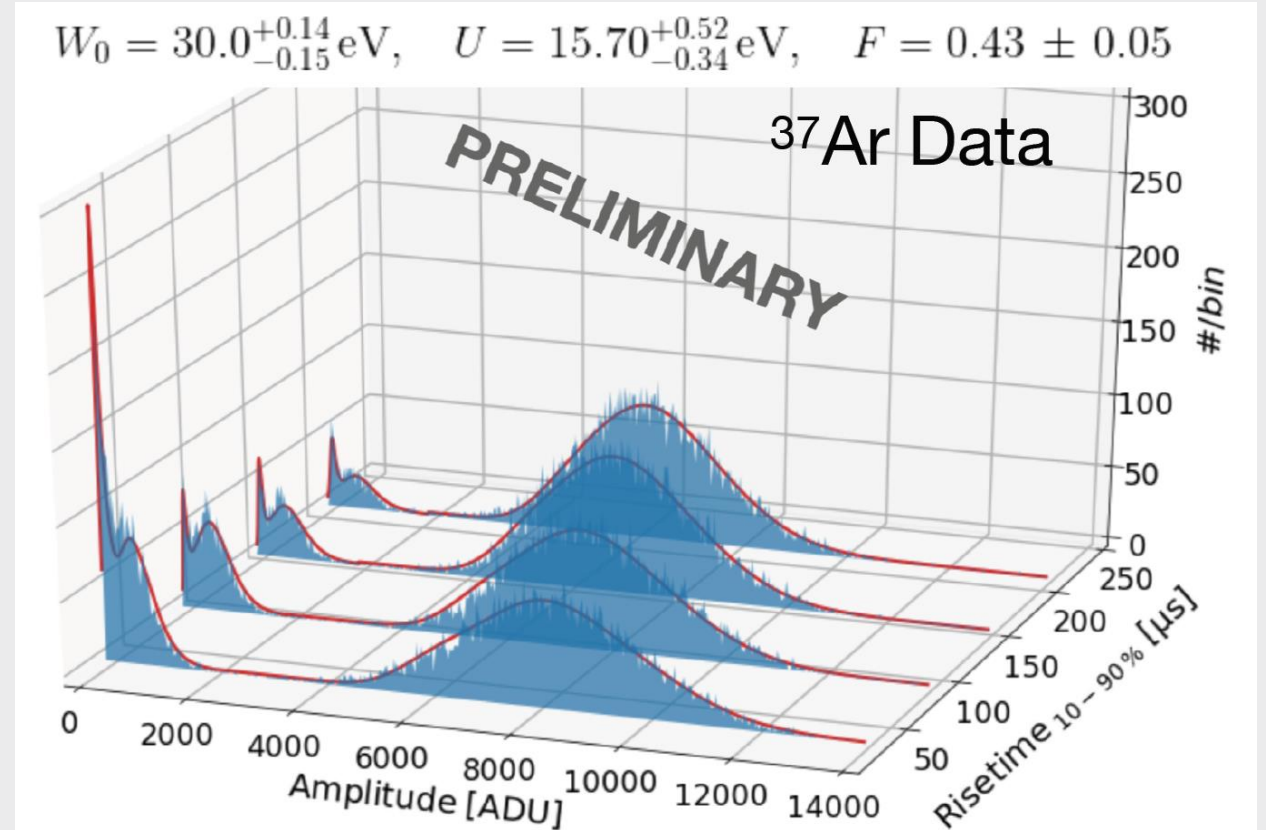
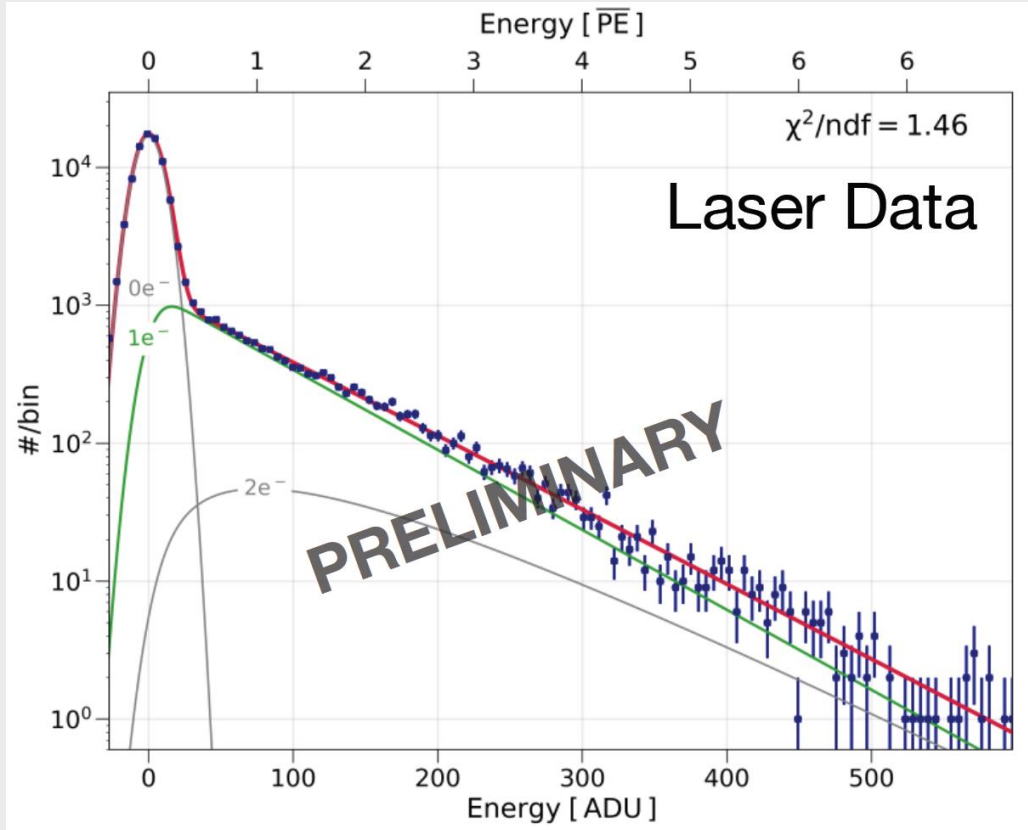
## Nuclear ionization yield measurement



## Quenching Factor of H in CH4



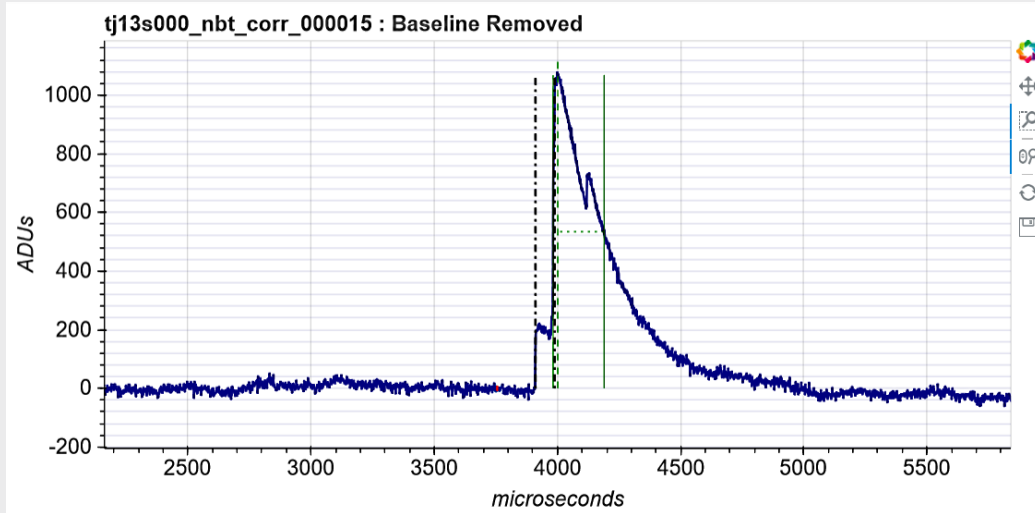
# Gas mixture and calibration (laser and $^{37}\text{Ar}$ )



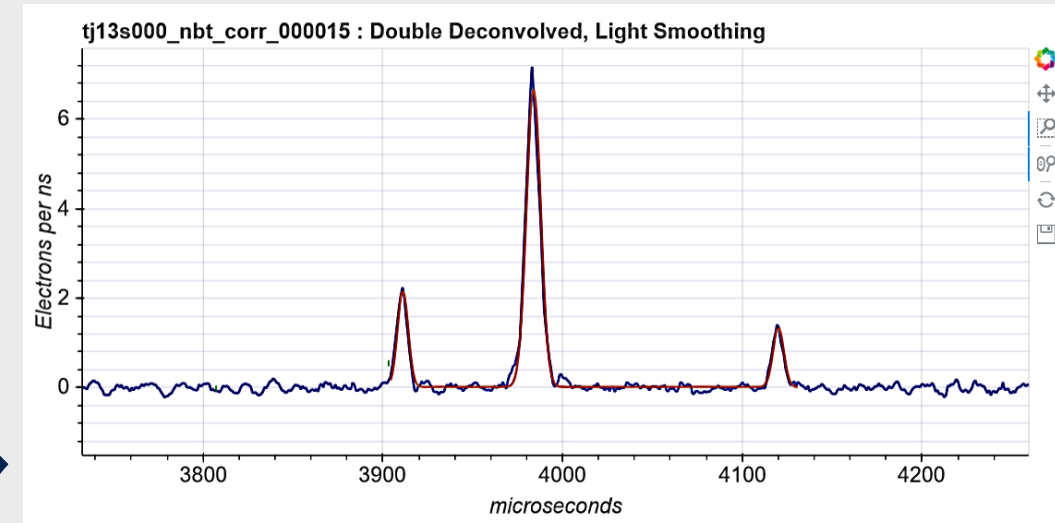
[doi:10.1088/1742-6596/2156/1/012059](https://doi.org/10.1088/1742-6596/2156/1/012059)



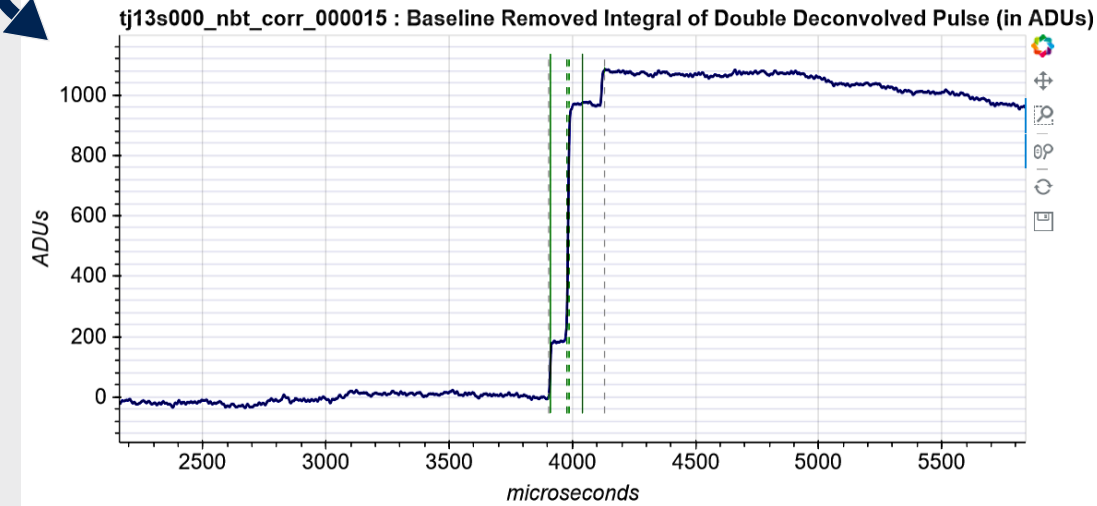
# Double deconvolution



Double deconvolution



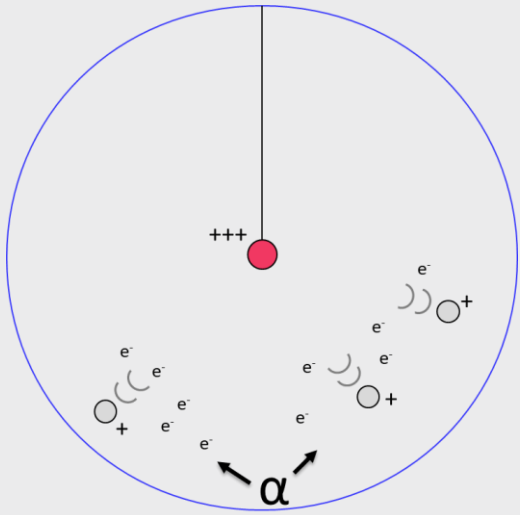
Integration



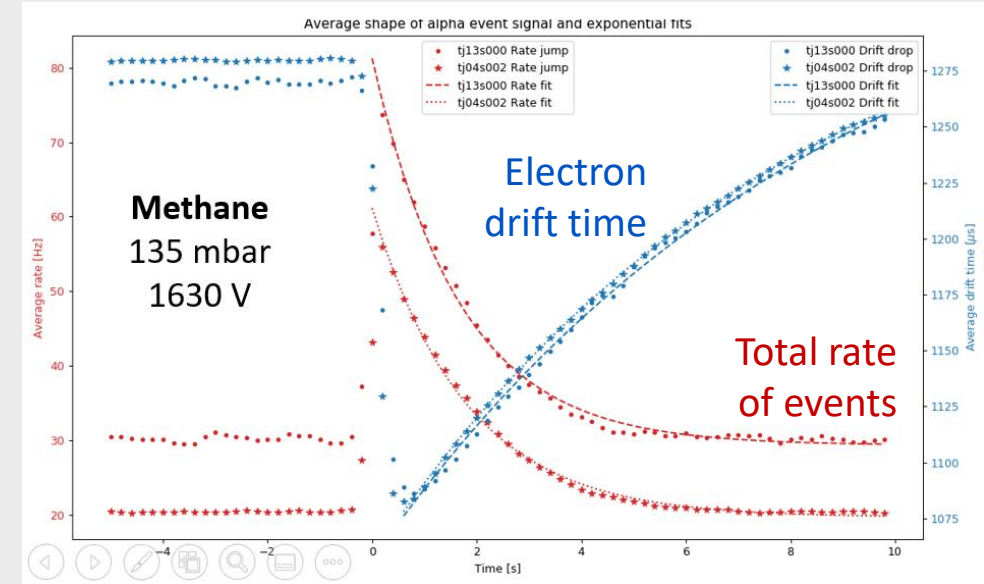
The ballistic deficit is the signal amplitude that gets underestimated due to the exponential decay of the preamplifier. The full amplitude (energy) is retrieved by doing a double deconvolution of the raw signal, and then integrating the pulses.



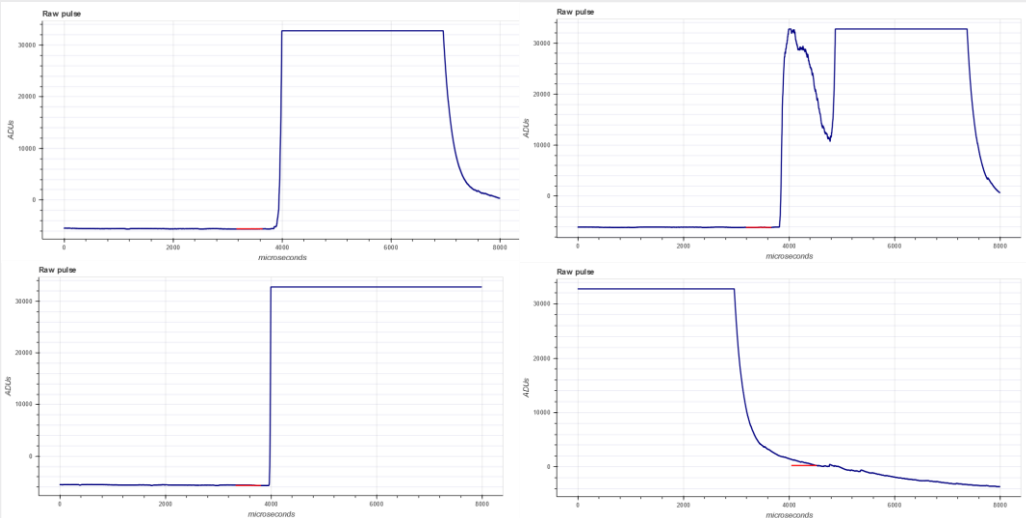
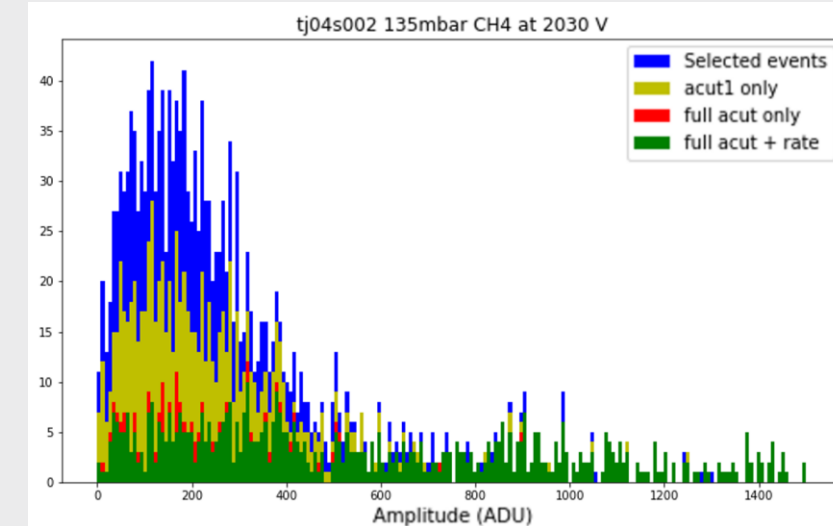
# Alpha background



There is  $^{210}\text{Po}$  contamination in the copper surface, which causes alphas that ionize a lot of gas. All the ions create a space charge that disturbs the electric field, and changes the electron drift time. For some still unknown reason, a high rate of low energy events keep happening for around 5s after each alpha.



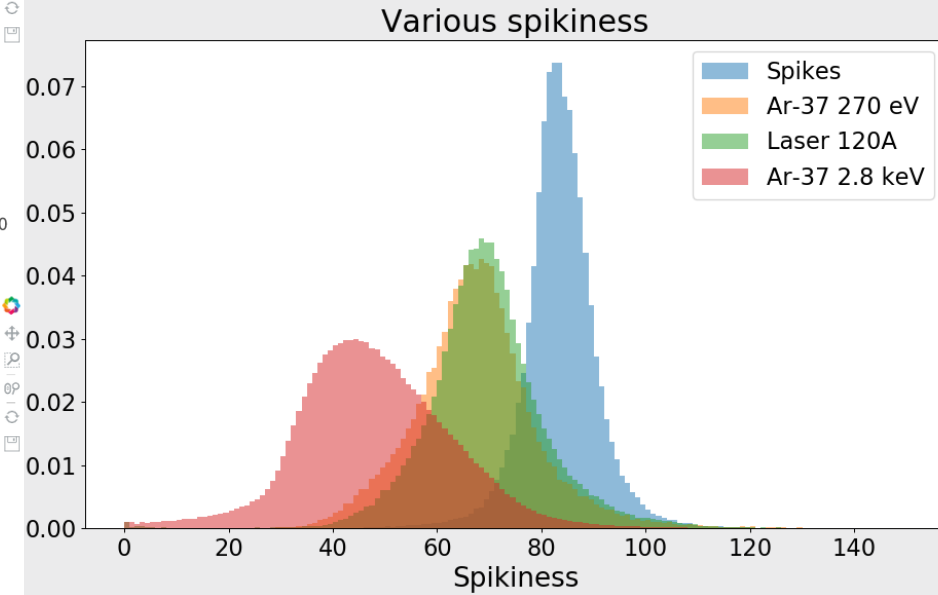
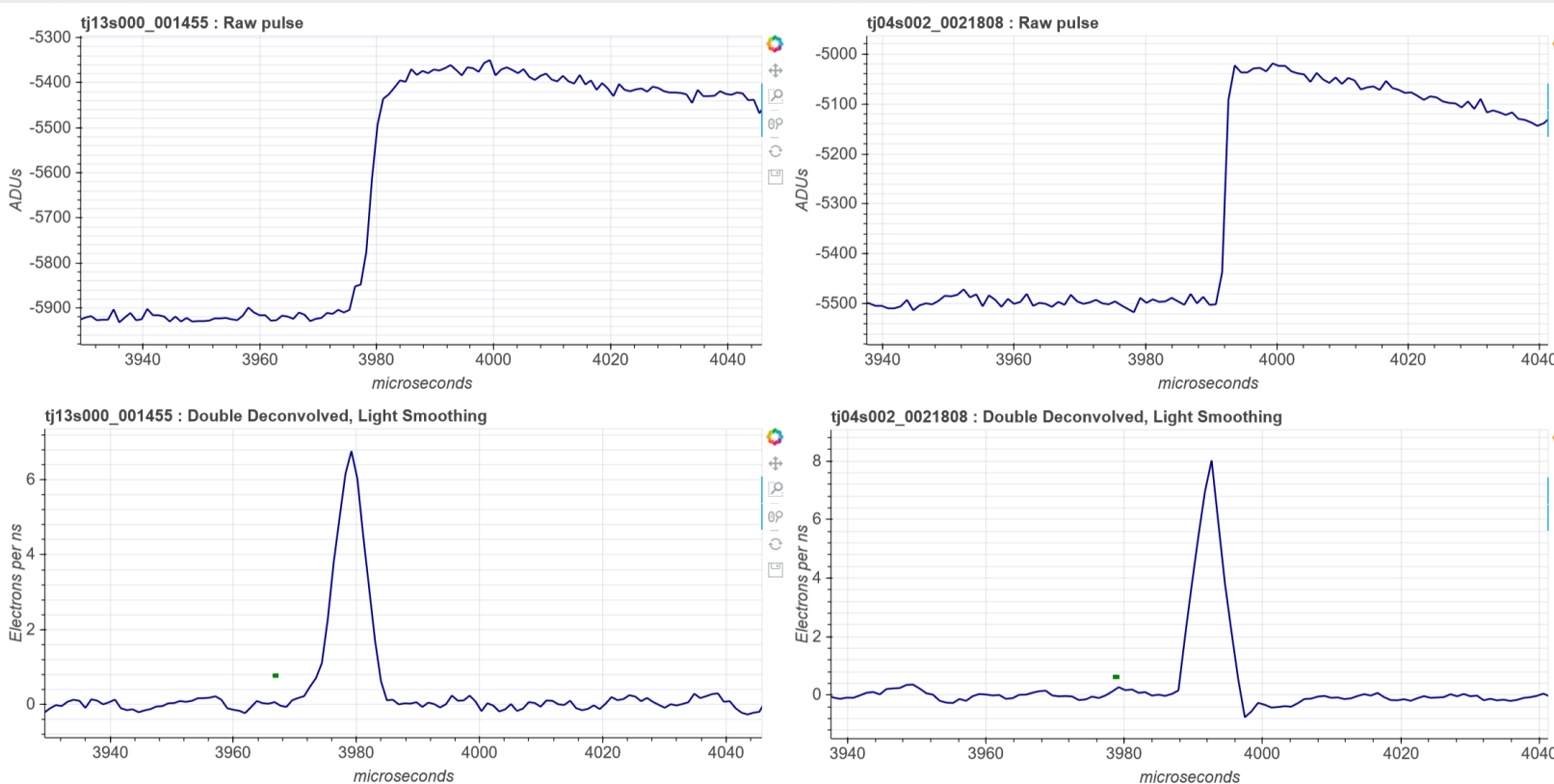
The saturated alpha signals can be broken up and difficult to detect, but using the drift time, rate of events and decreasing baselines, we can identify alphas and remove most of the low-energy background due to them with a 5s cut after each alpha, keeping 85-90% of the total time.



# Spikiness

1<sup>st</sup> comparison method  
Spikiness

$$\text{Spk} = \frac{\text{Max signal derivative}}{\text{Peak height}}$$



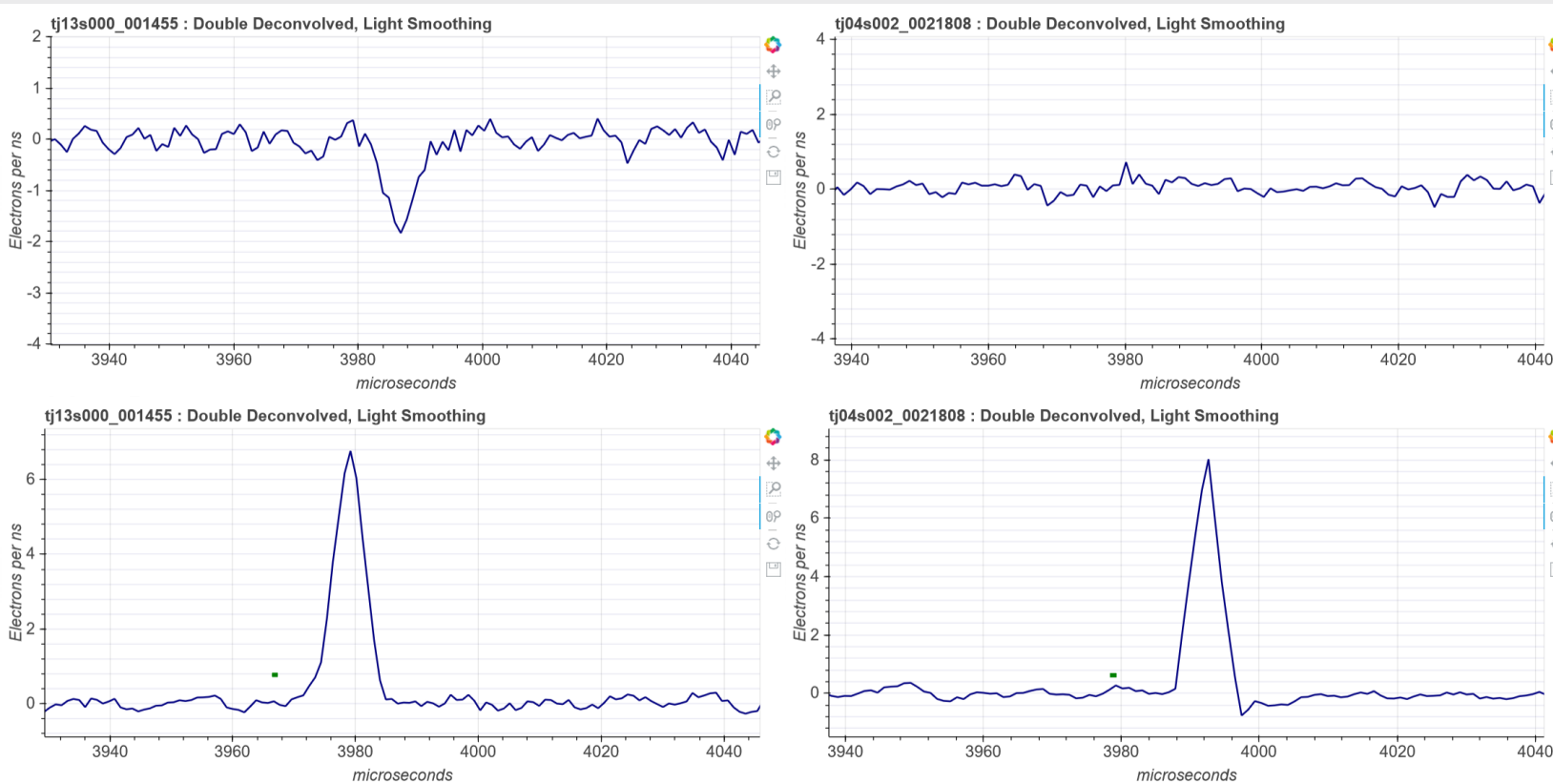
Probable  
electron event

Probable spike  
event

# North/South integral ratio

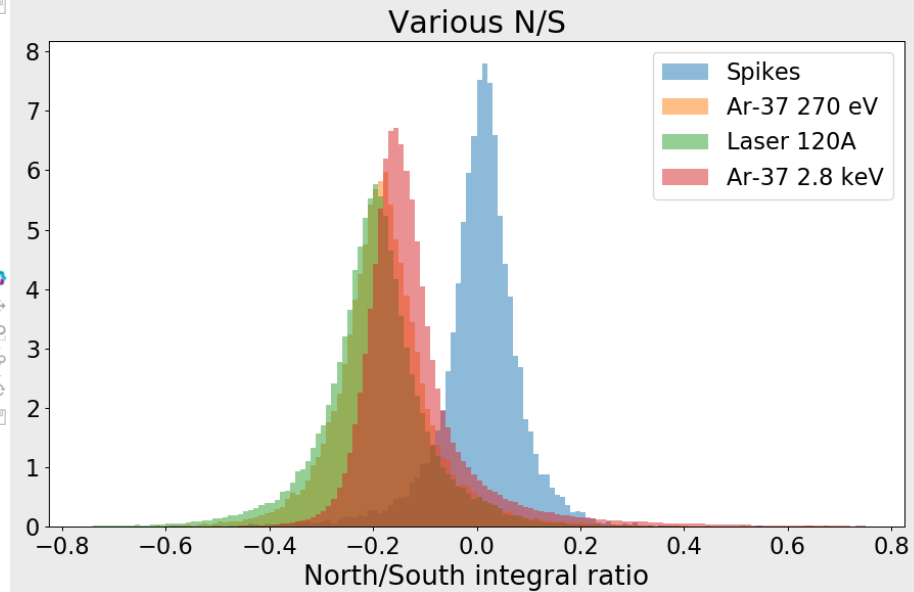
2<sup>nd</sup> comparison method  
N/S ratio

$$N/S = \frac{\text{North DD2 integral}}{\text{South DD2 integral}}$$



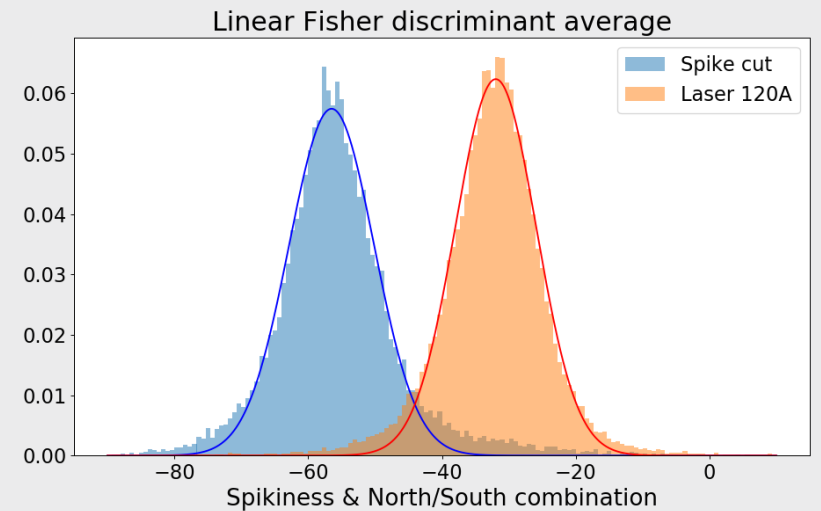
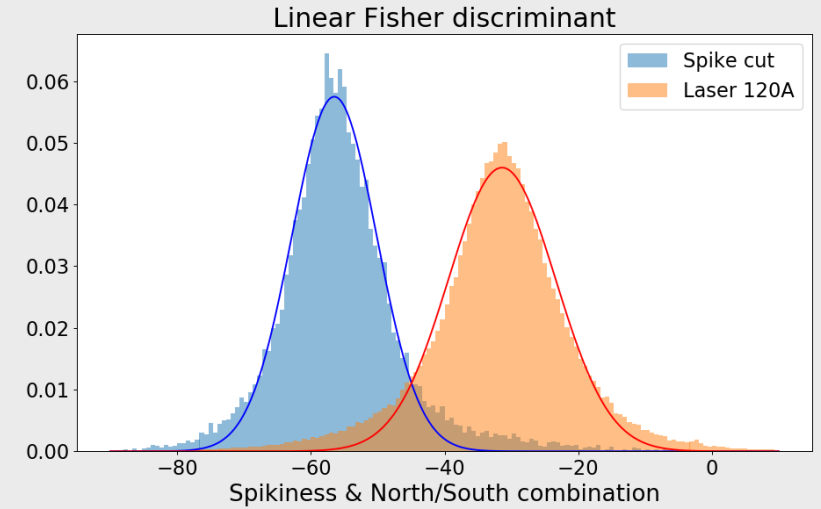
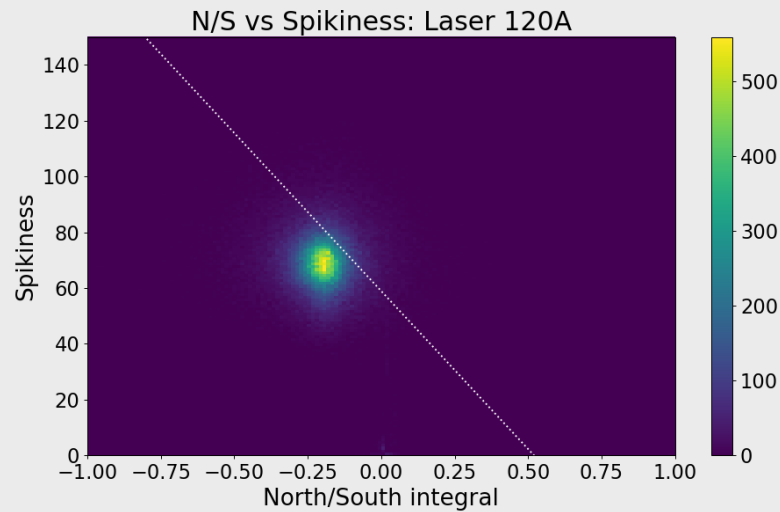
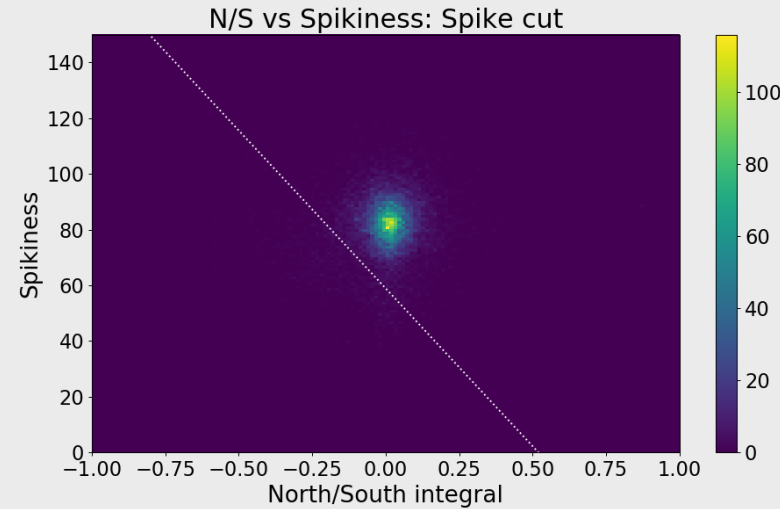
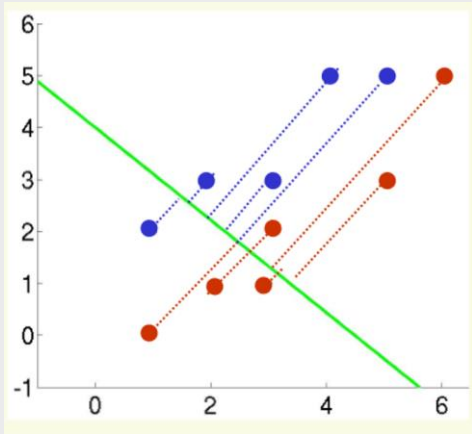
Probable  
electron event

Probable spike  
event



# Linear Fisher discriminant

Optimal comparison:  
Combining both methods



$$\text{Separation } J(\omega) = \frac{(\mu_1 - \mu_2)^2}{N_1(\sigma_1)^2 + N_2(\sigma_2)^2}$$

$$\text{New axis } \tau_i = \omega^t x_i^t$$

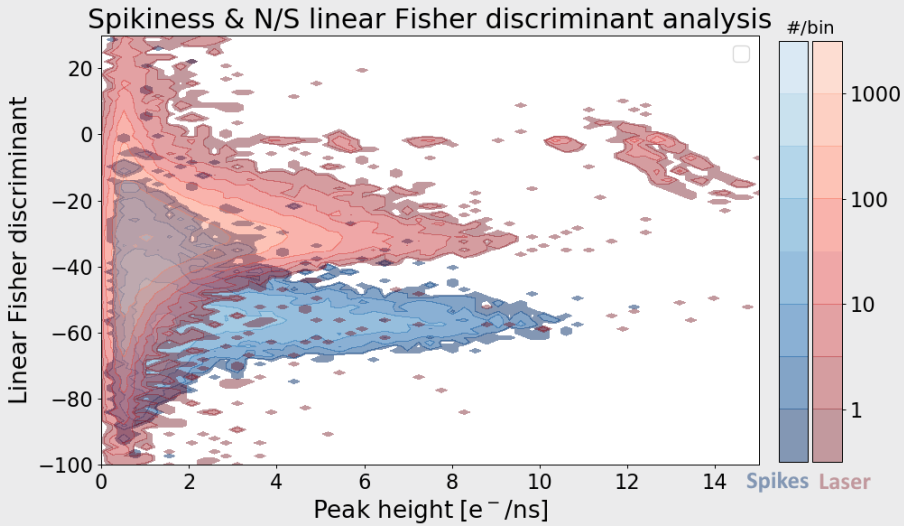
$$\omega = [-0.678619815, -76.8674863]$$

Spk

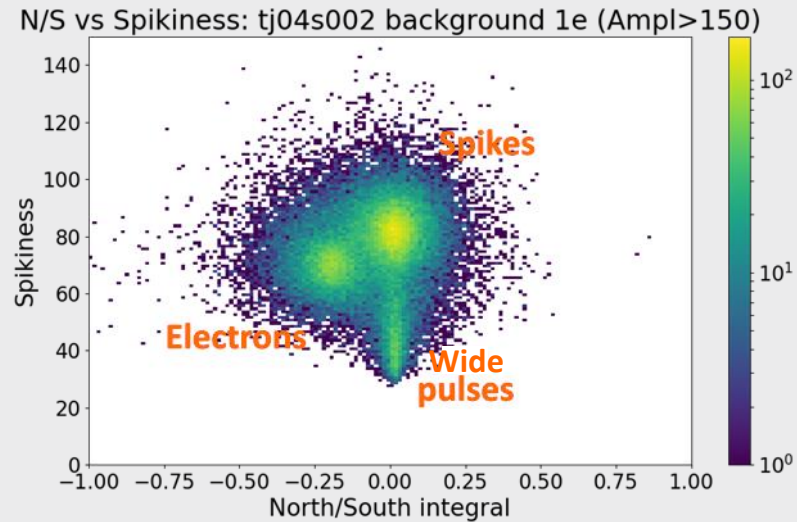
NS



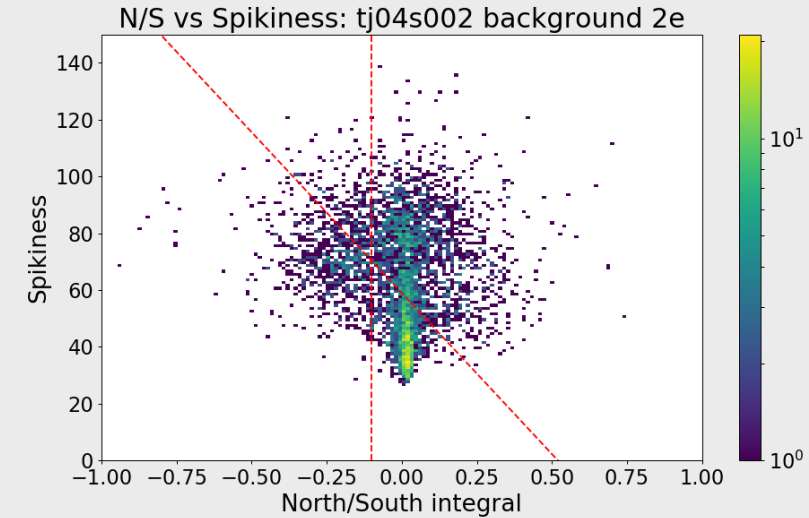
# Fits to the physics data



The separation between electron and spike events is weaker at lower energies.



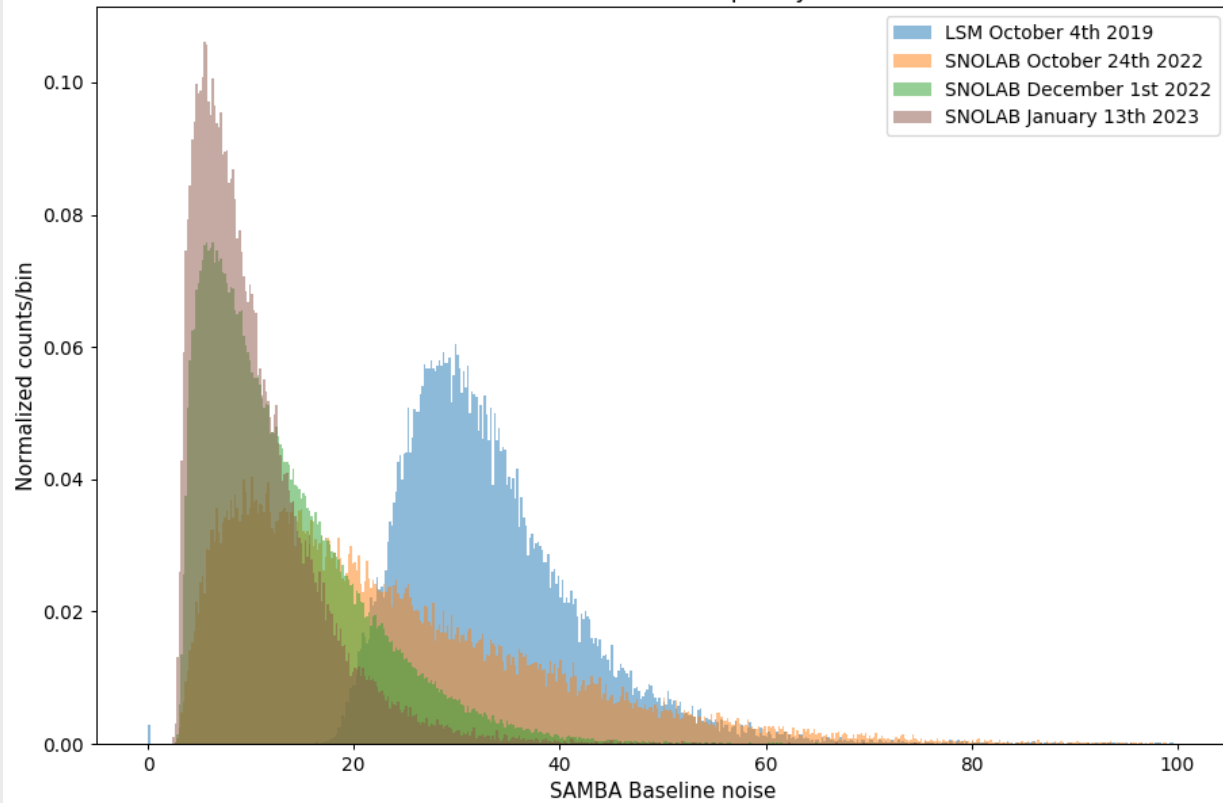
Wide pulses are another dominant background of unknown origin in the data.



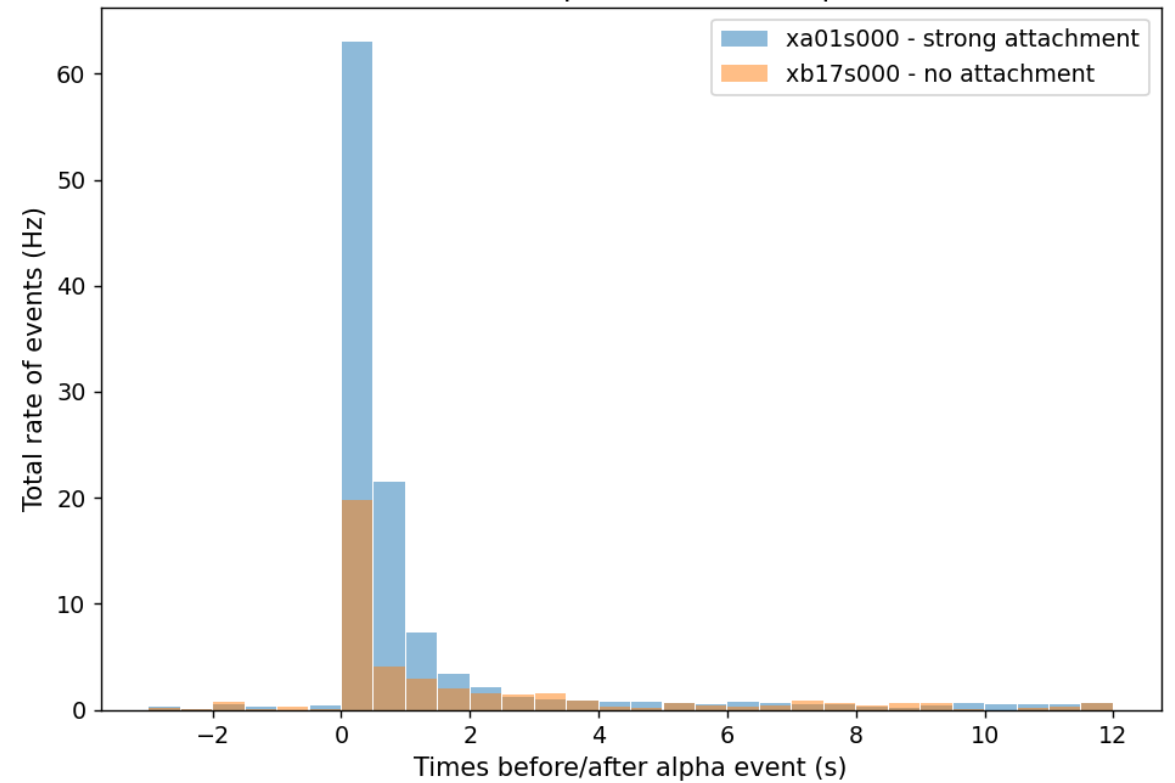
A cut on N/S removes fat pulses (dominant in 2-peak data) and a Fisher discrimin. cut removes spikes.

# SNOLAB noise

Evolution of the low frequency noise

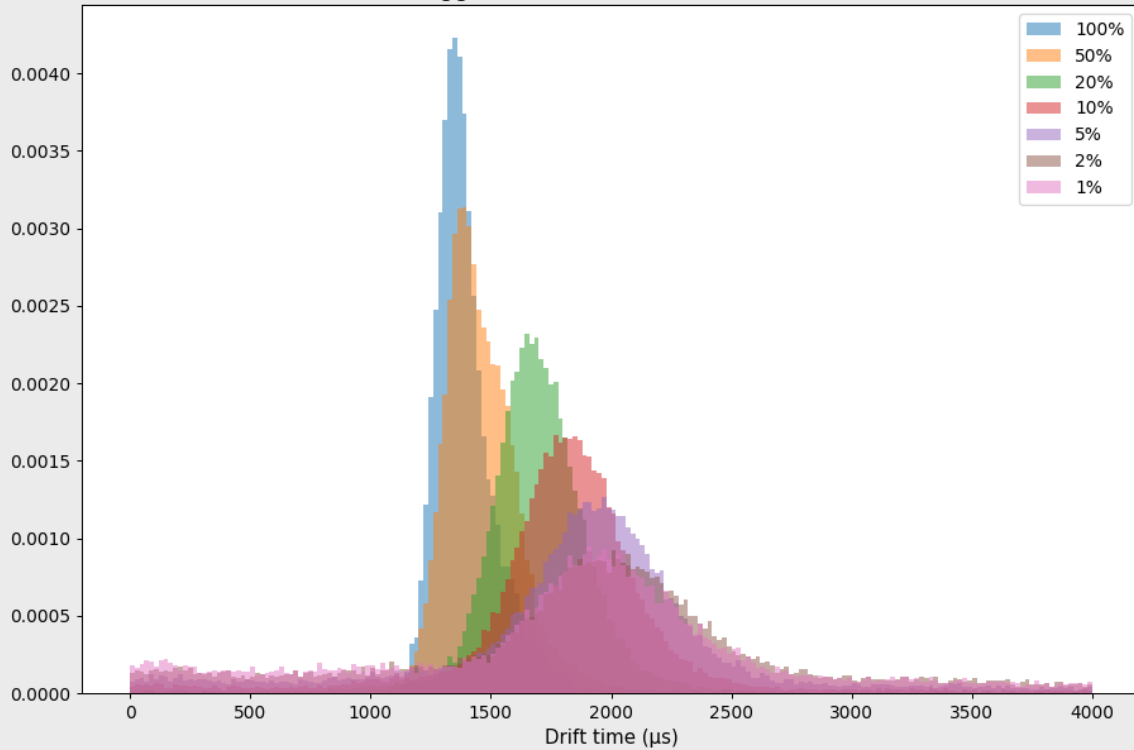


Rate of events comparison around alpha events



# SNOLAB space charge

wj19s00x: 993 mbar of Ne+2%CH<sub>4</sub>, no source, HV1=1140V, HV2=1200V, laser at 130A w/ 10Hz  
**South** : Laser triggered, Saturated events excluded, normalized



wj21s00x: 993 mbar of Ne+2%CH<sub>4</sub>, no source, HV1=1140V, HV2=1200V, laser at 130A w/ 10%  
**South** : Laser triggered, Saturated events excluded, normalized

