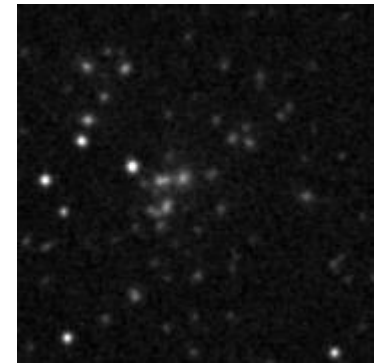
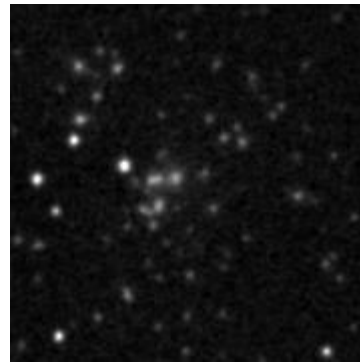
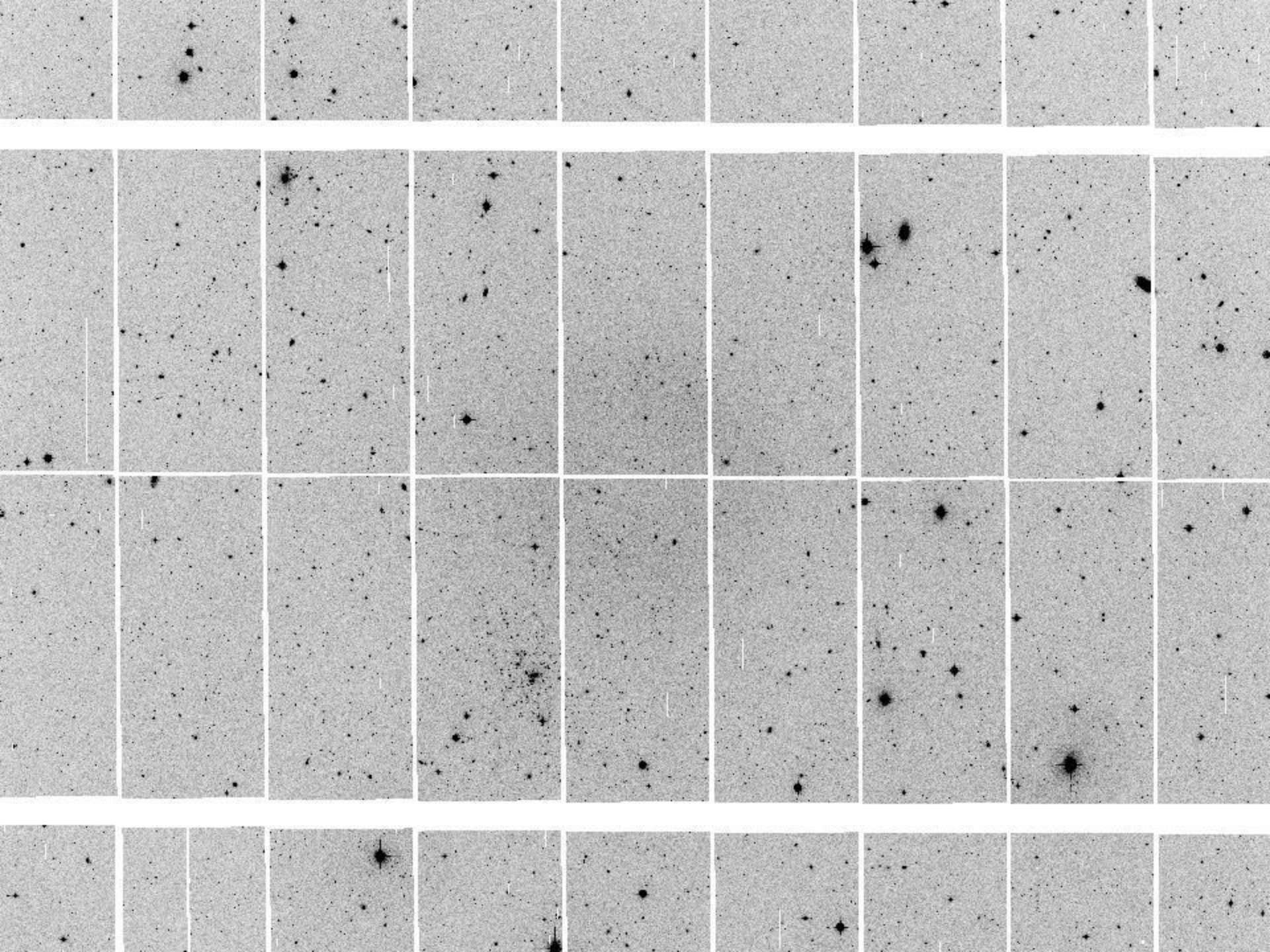


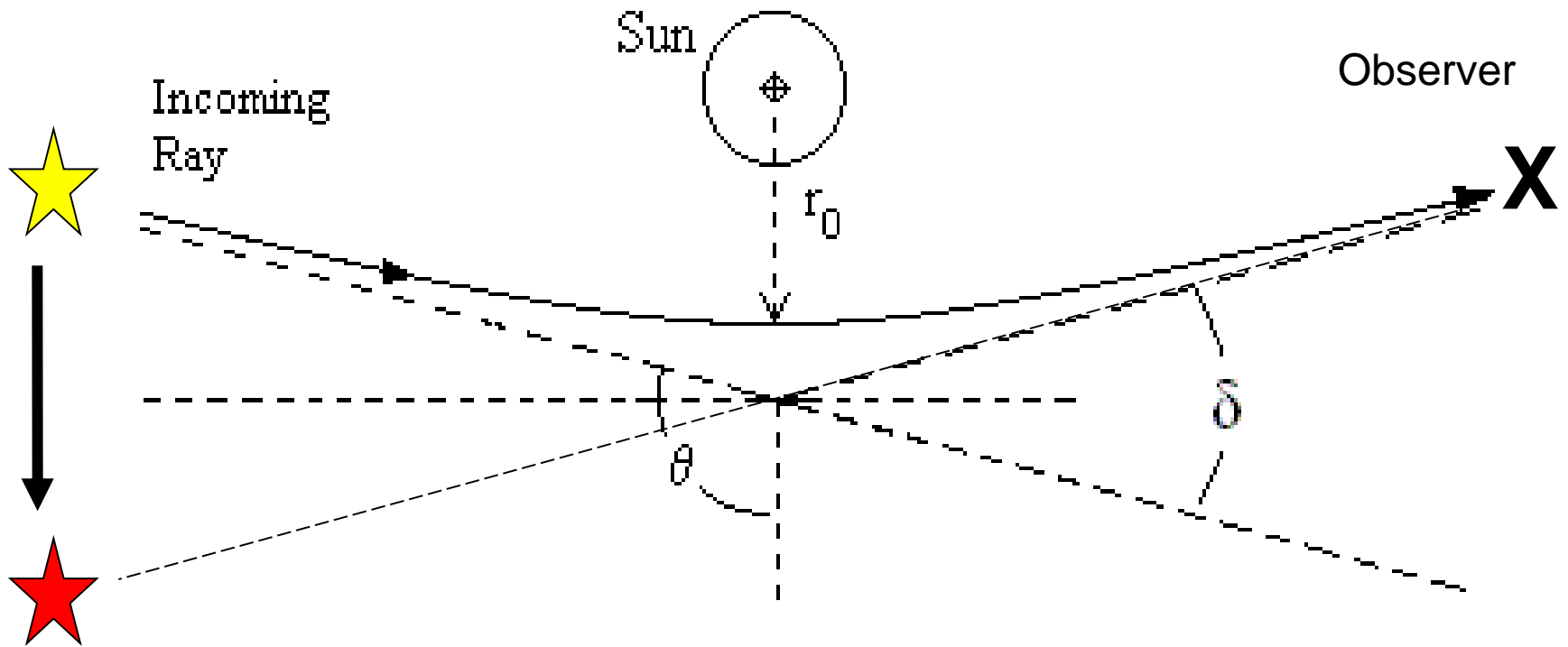
Hubble Phase II



UKSTU

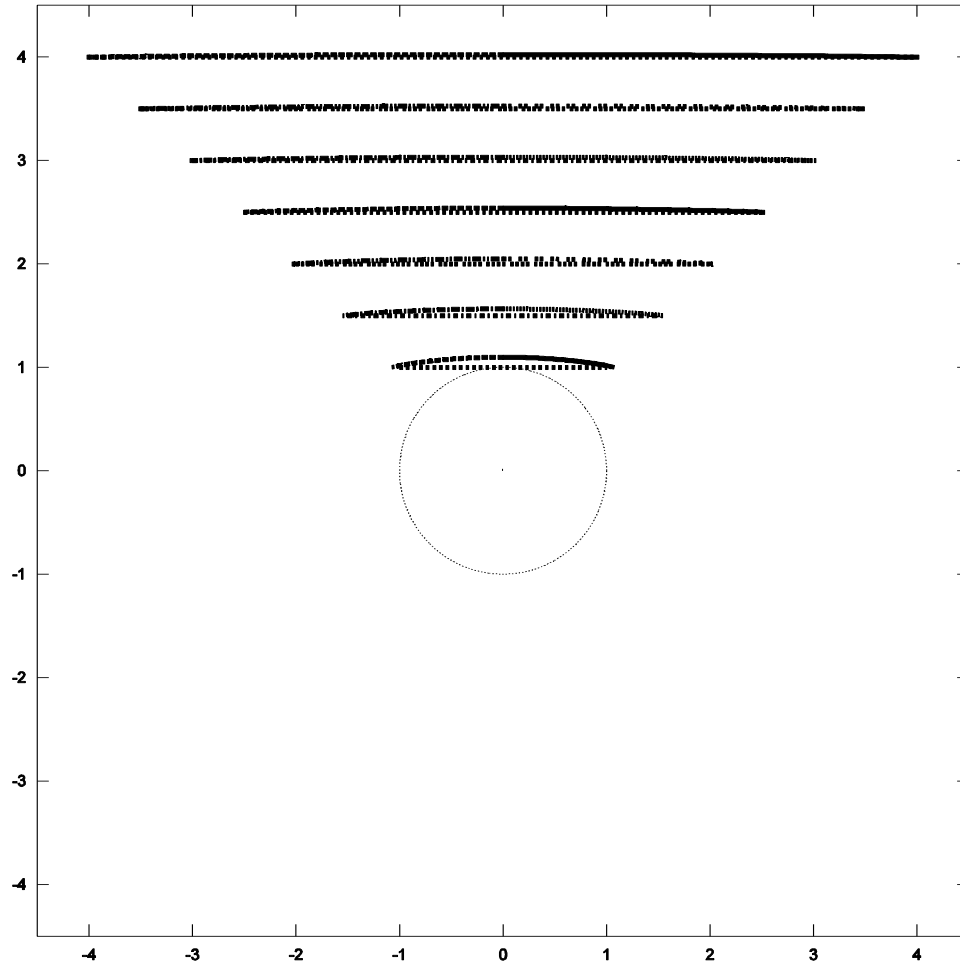






$$\delta = 4\left(\frac{m}{r_0}\right) + \left(\frac{15}{4}\pi - 4\right)\left(\frac{m}{r_0}\right)^2 + \left(-\frac{15}{2}\pi + \frac{122}{3}\right)\left(\frac{m}{r_0}\right)^3 + \dots$$

Curvature of Tangential Background Lines through a Gravitational Lens



Tangential Background Lines through a Gravitational Lens and Medium

