



Noise Rejection Method Using Spherical Harmonic Decomposition

Elena Massera, Maxime Fays
The University of Sheffield

Sheffield Group

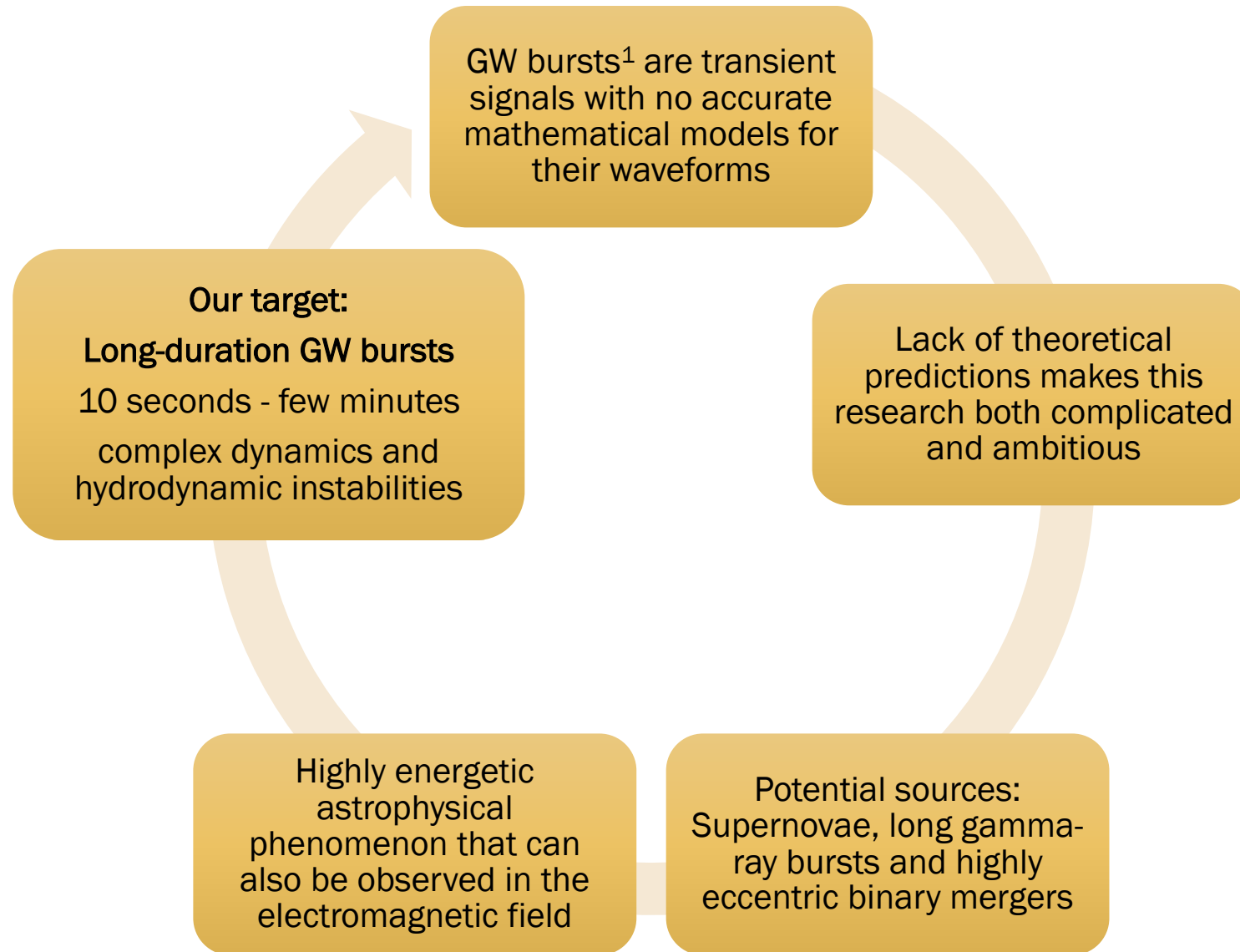
Prof. Ed Daw
Dr. Maxime Fays
Dr. Tega Edo
Elena Massera
Timesh Mistry



Noise Rejection Method Using Spherical Harmonic Decomposition

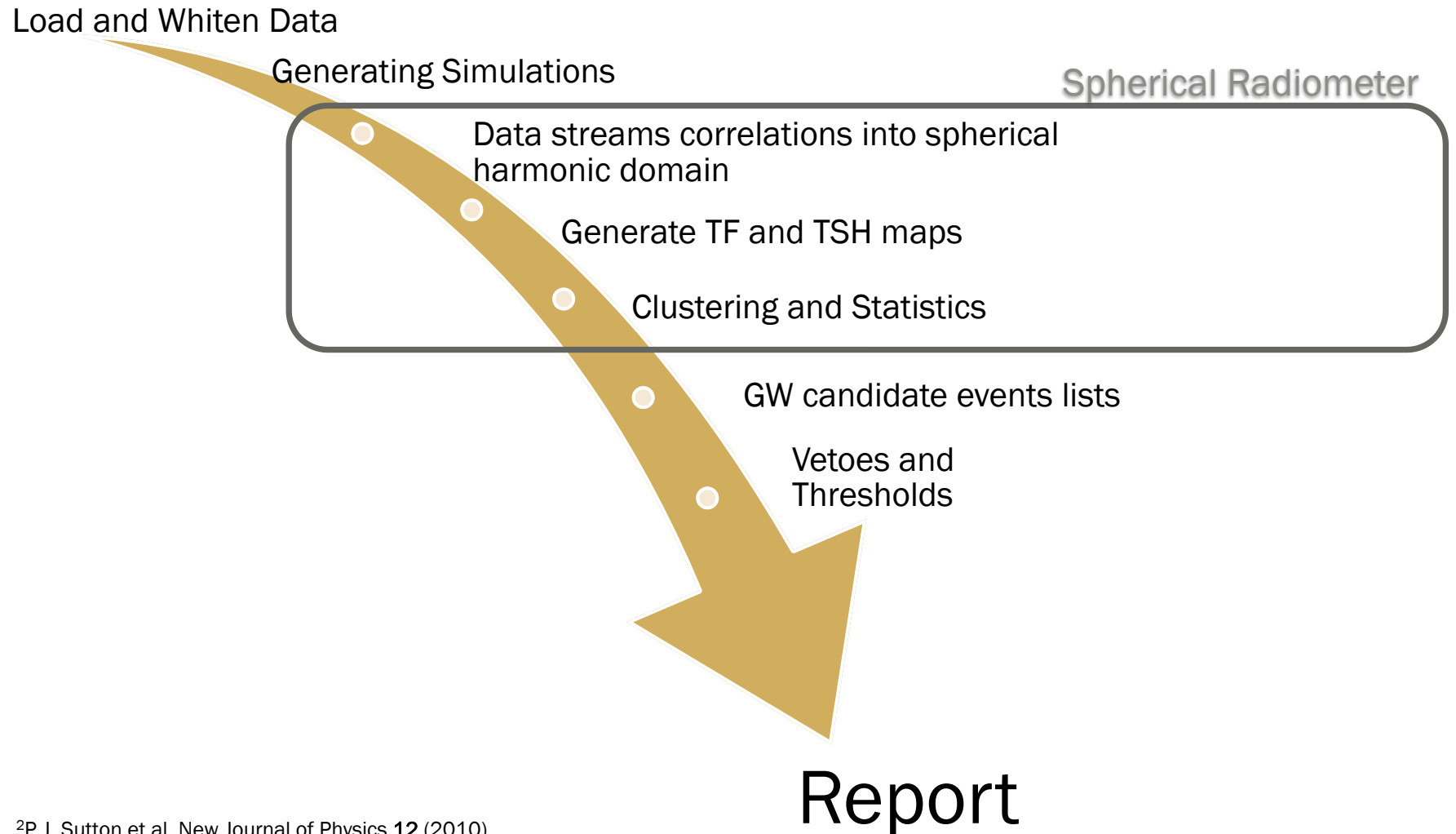
- Gravitational-wave burst-like signals: an introduction
- X-SphRad: software package for active research
- Glitch Rejection: method overview and first tests
- SWOT analysis

Gravitational-wave burst-like signals: an introduction



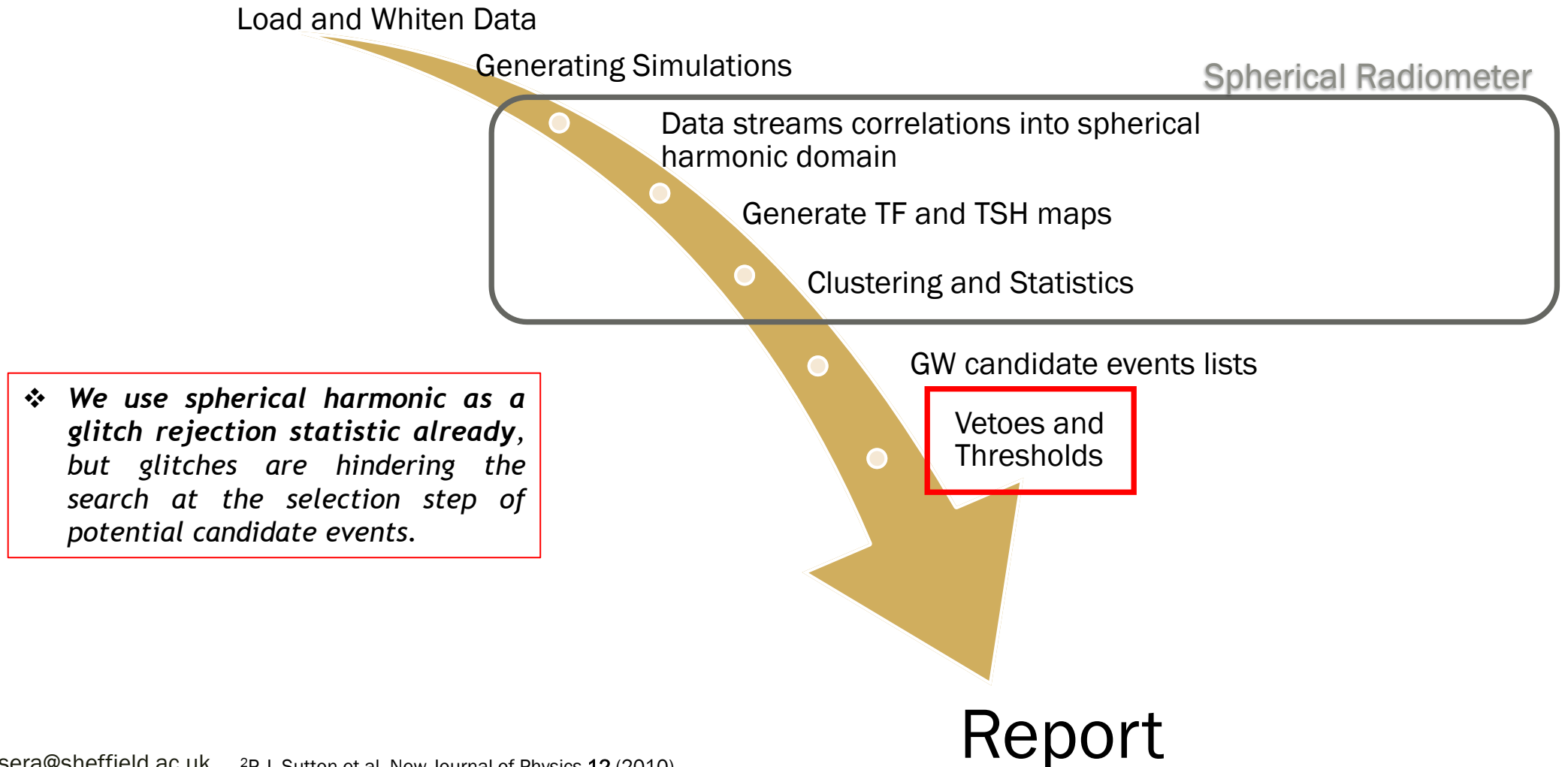
X-SphRad: The X-Pipeline Spherical Radiometer

- ✓ X-SphRad² is a standard tool in gravitational wave analysis for long-duration searches
- ✓ The radiometer pipeline³ computes data streams correlations into a spherical harmonic domain



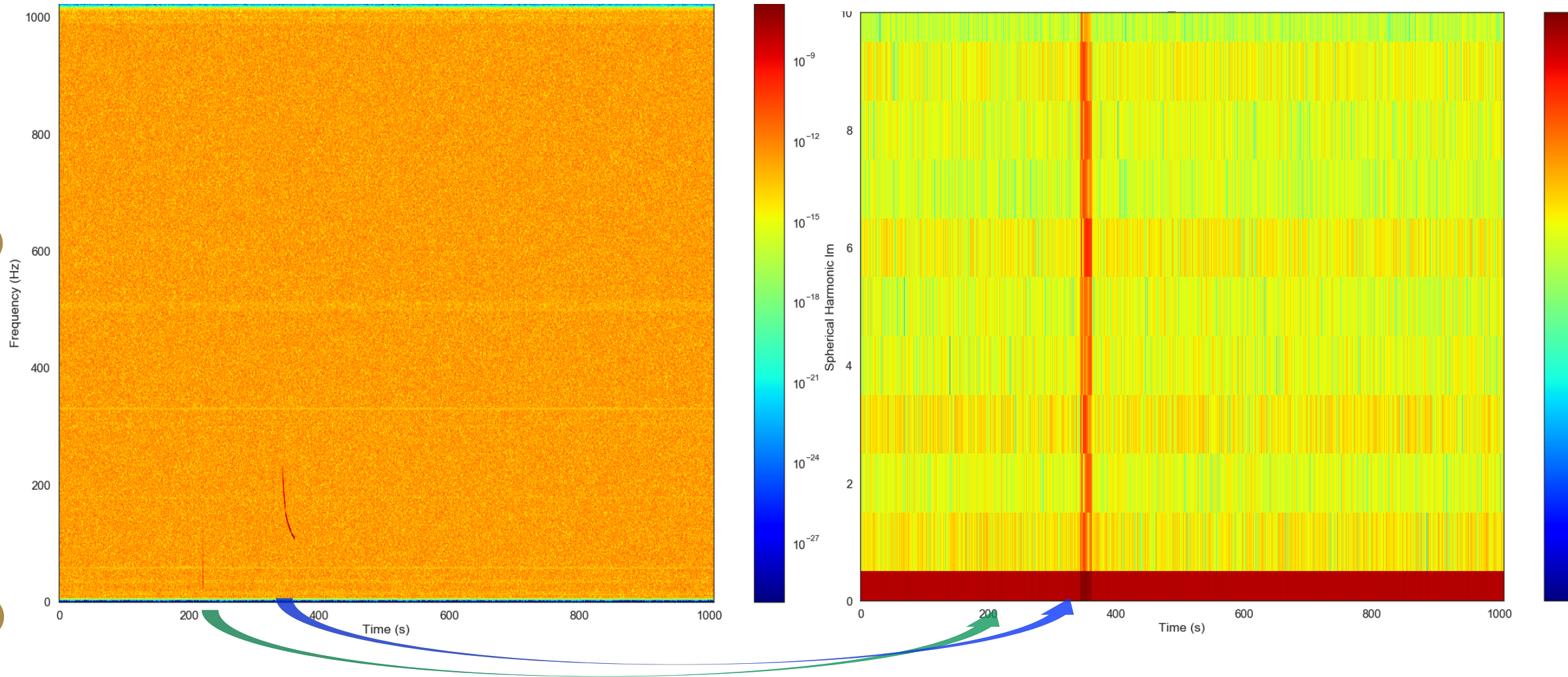
X-SphRad: The X-Pipeline Spherical Radiometer

- ✓ X-SphRad² is a standard tool in gravitational wave analysis for long-duration searches
- ✓ The radiometer pipeline³ computes data streams correlations into a spherical harmonic domain

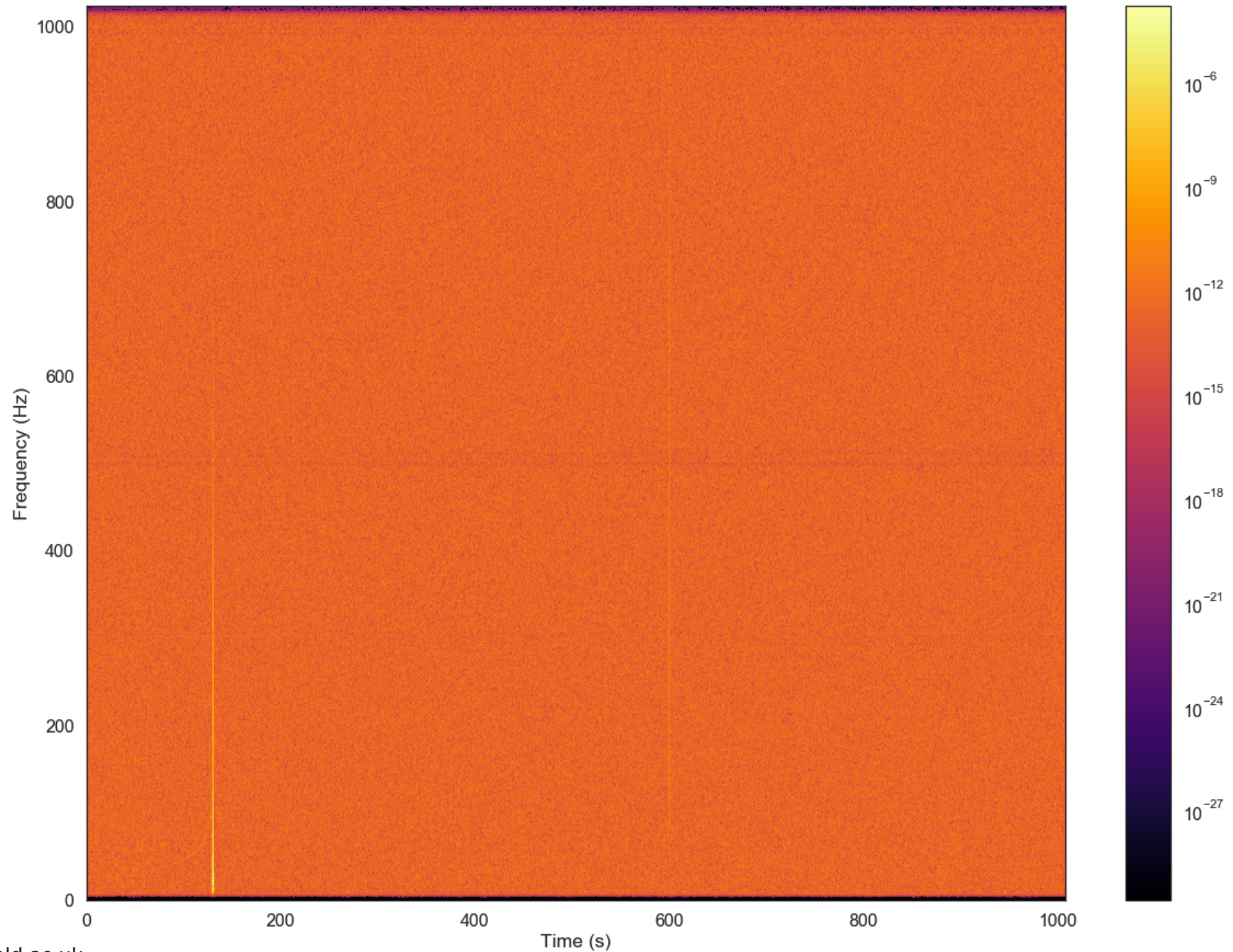


Spherical Harmonic Coefficients: definition and simulation⁴

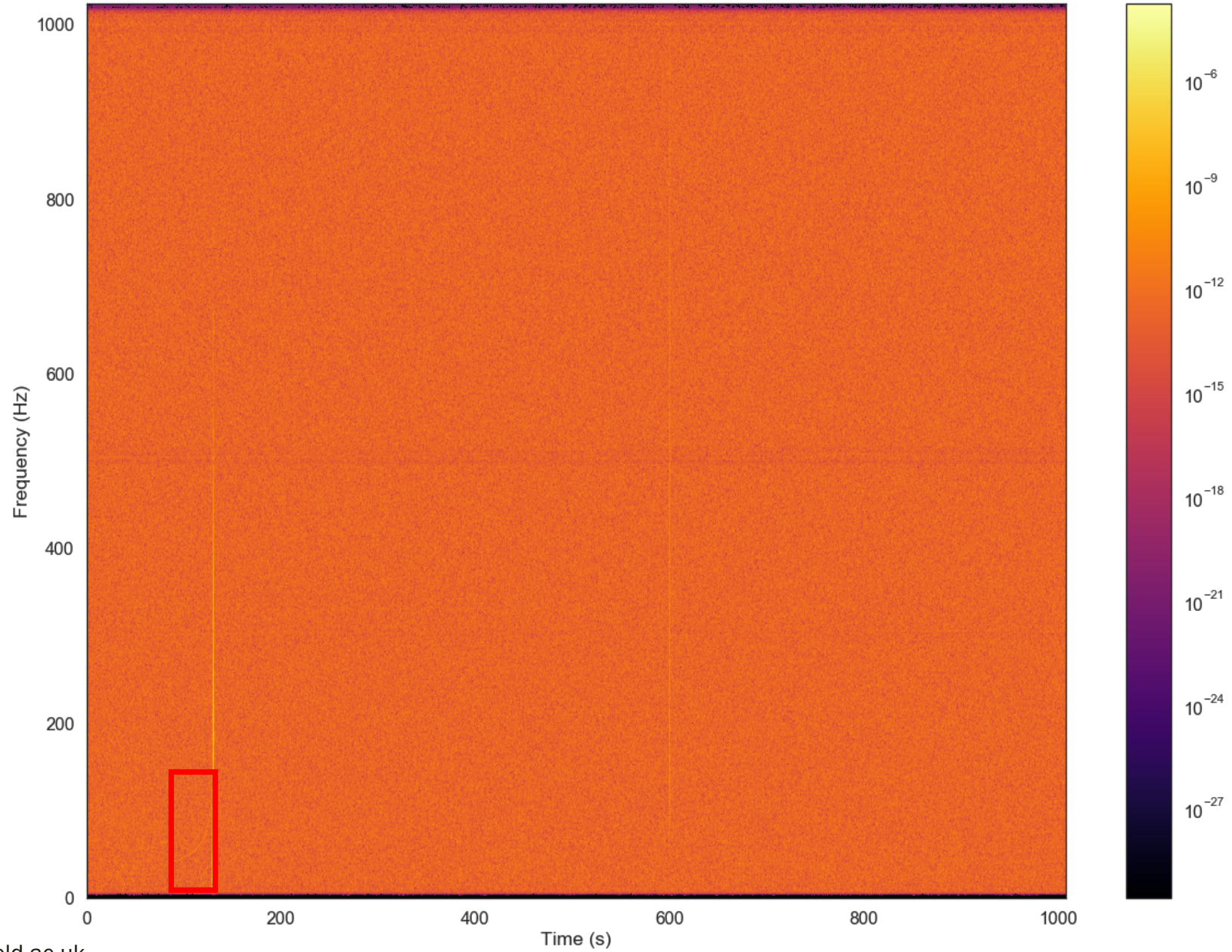
- C_{00} : the zeroth component is a measure of the **energy average** over all sky
- C_{lm} : **signal power** will be present in most of this coefficients - generally none will stand out more than any other



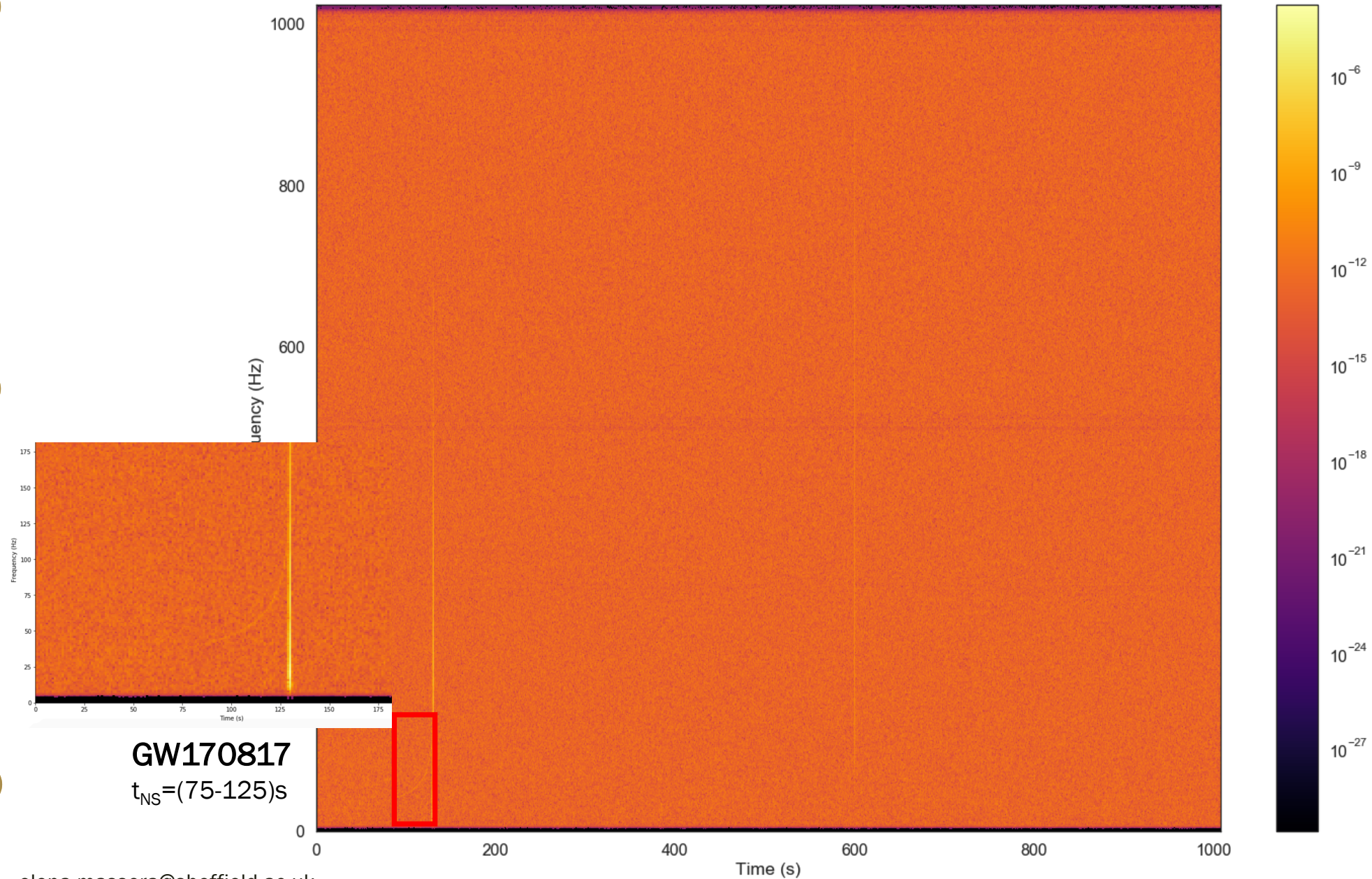
- Real data: from O2 run data (GPS time 1187008820)



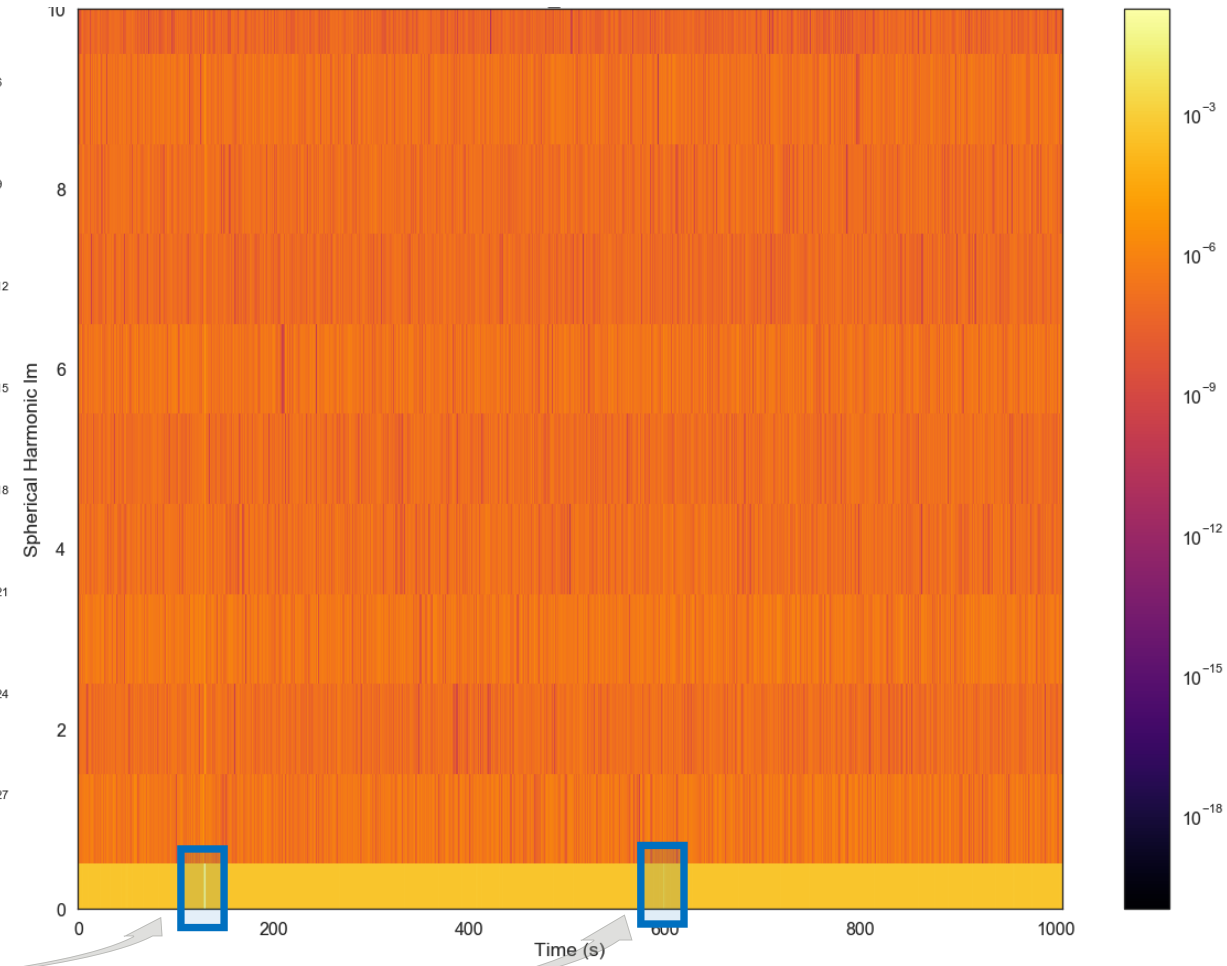
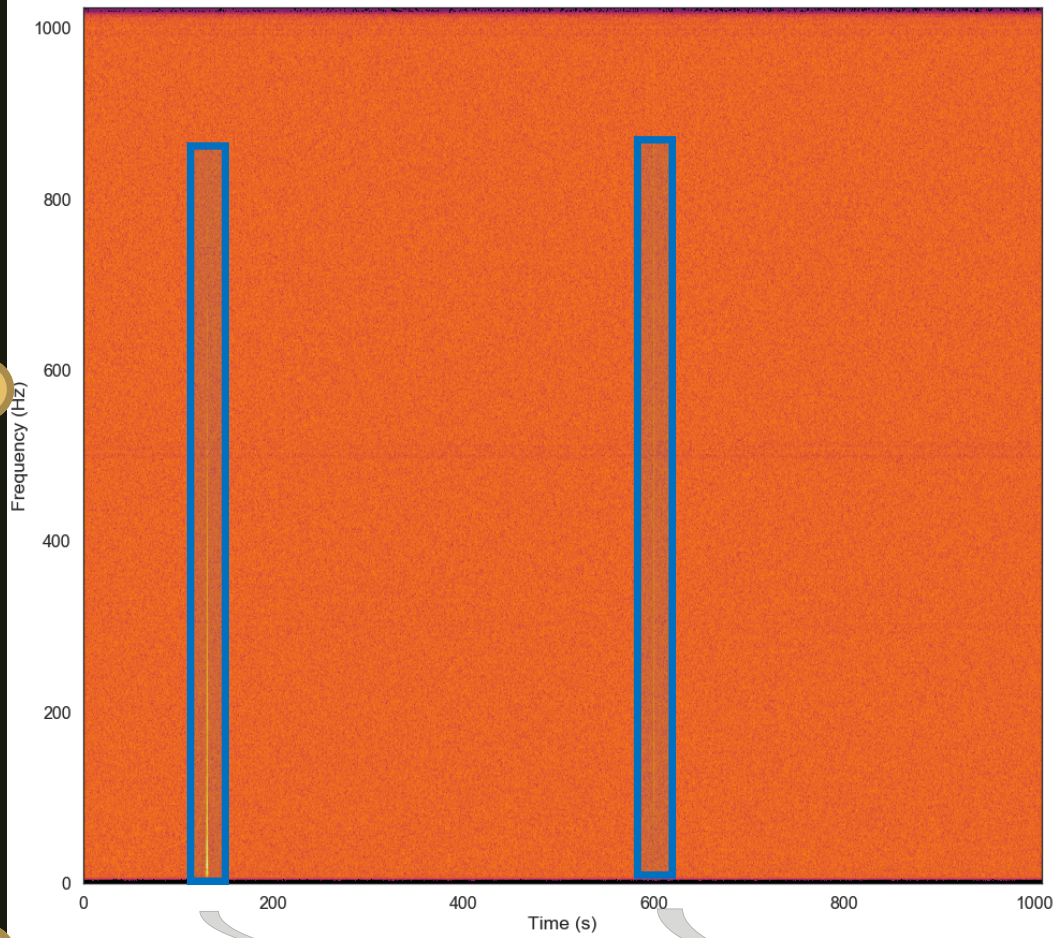
- Real data: from O2 run data (GPS time 1187008820)



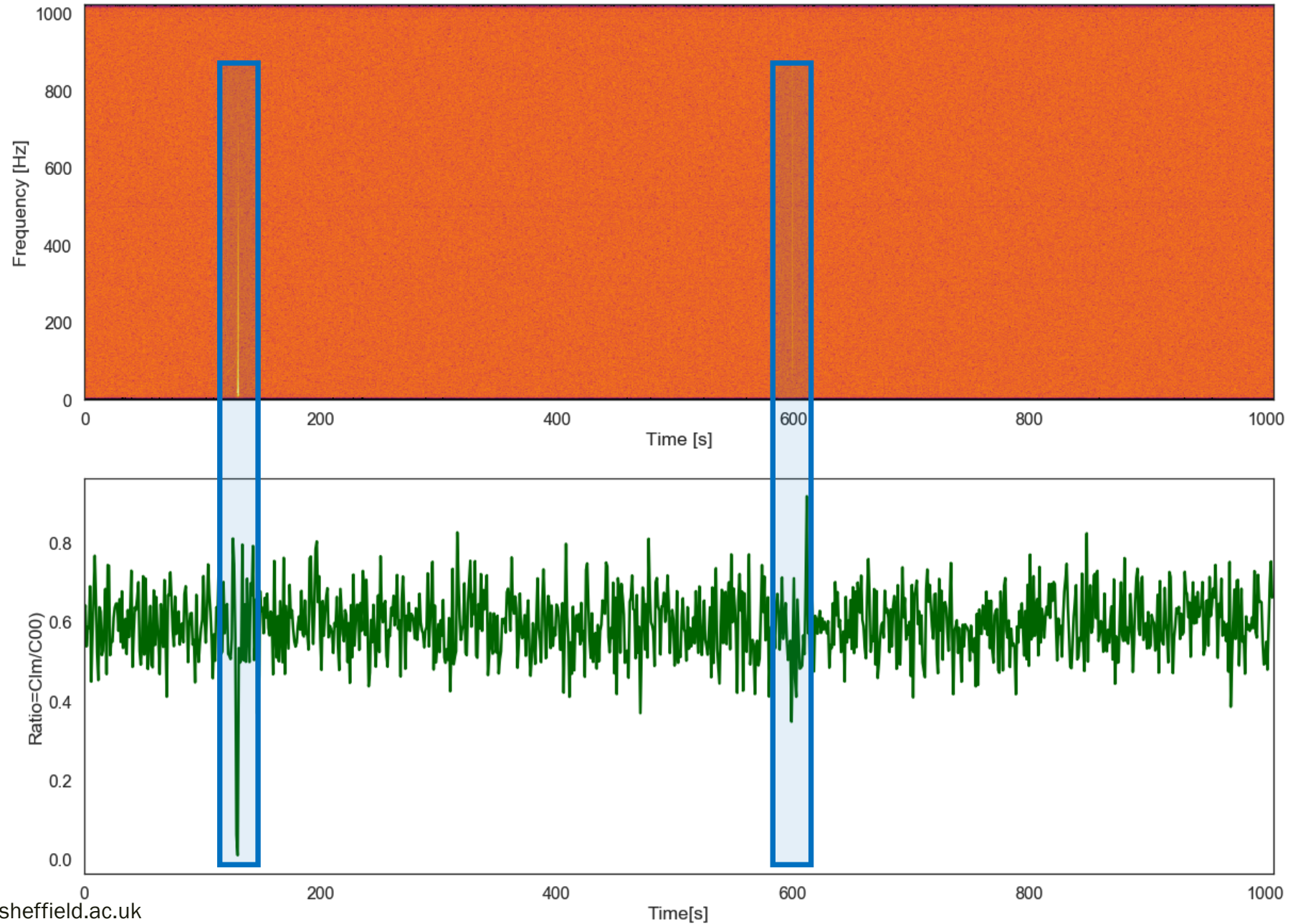
- Real data: from O2 run data (GPS time 1187008820)



■ Real data: from O2 run data (GPS time 1187008820)

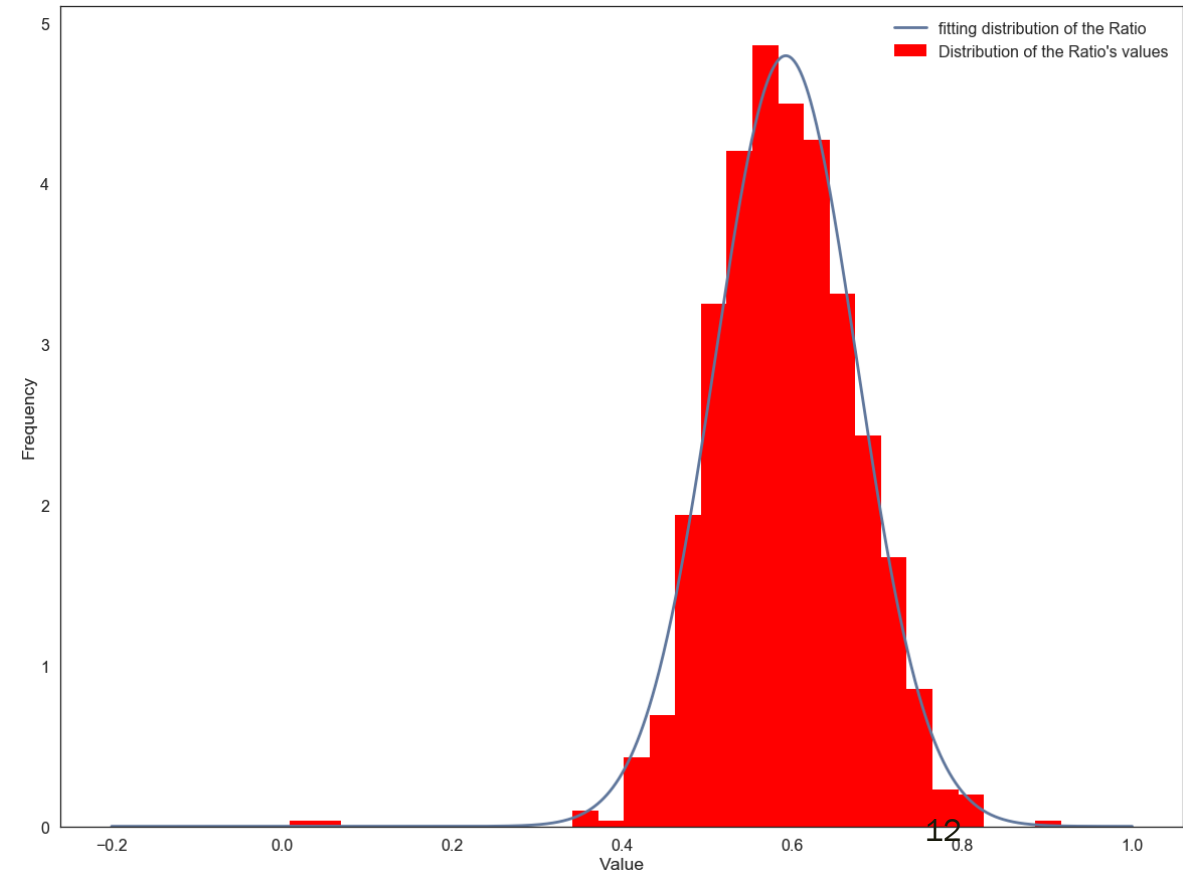


- Method: Identify Glitches using the ratio= $\frac{C_{lm}}{C_{00}}$

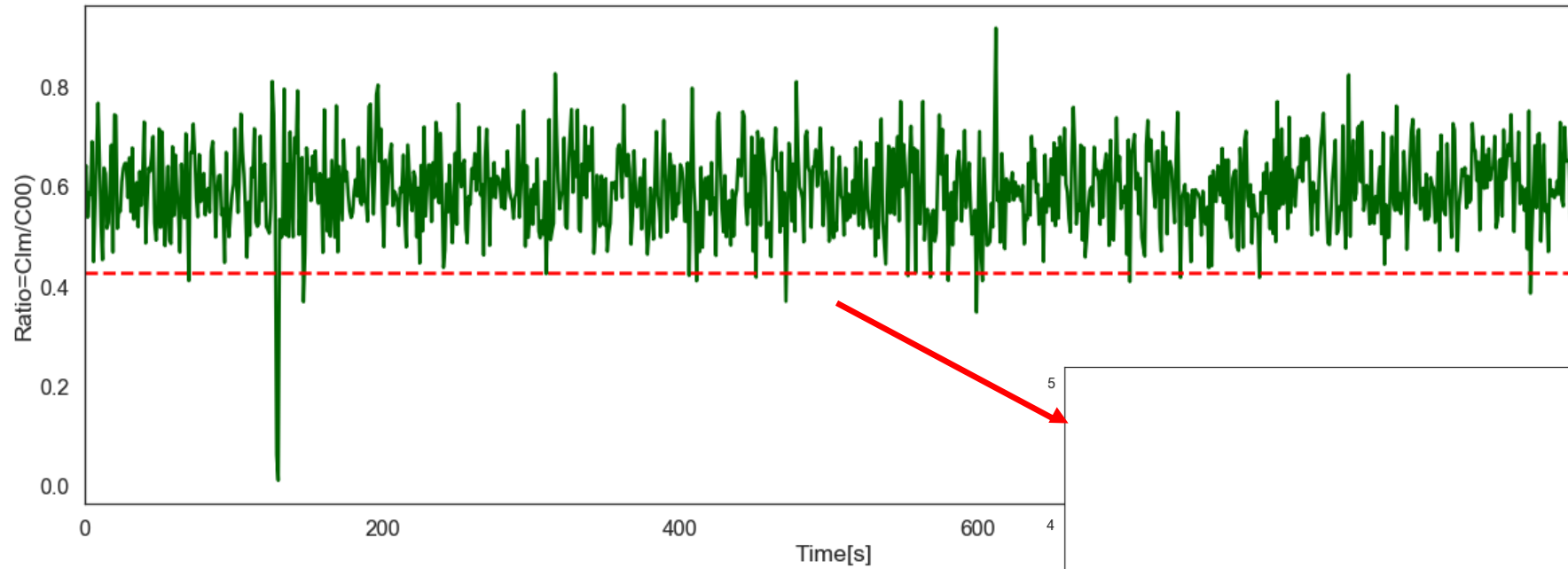


- Setting the Threshold on the Ratio

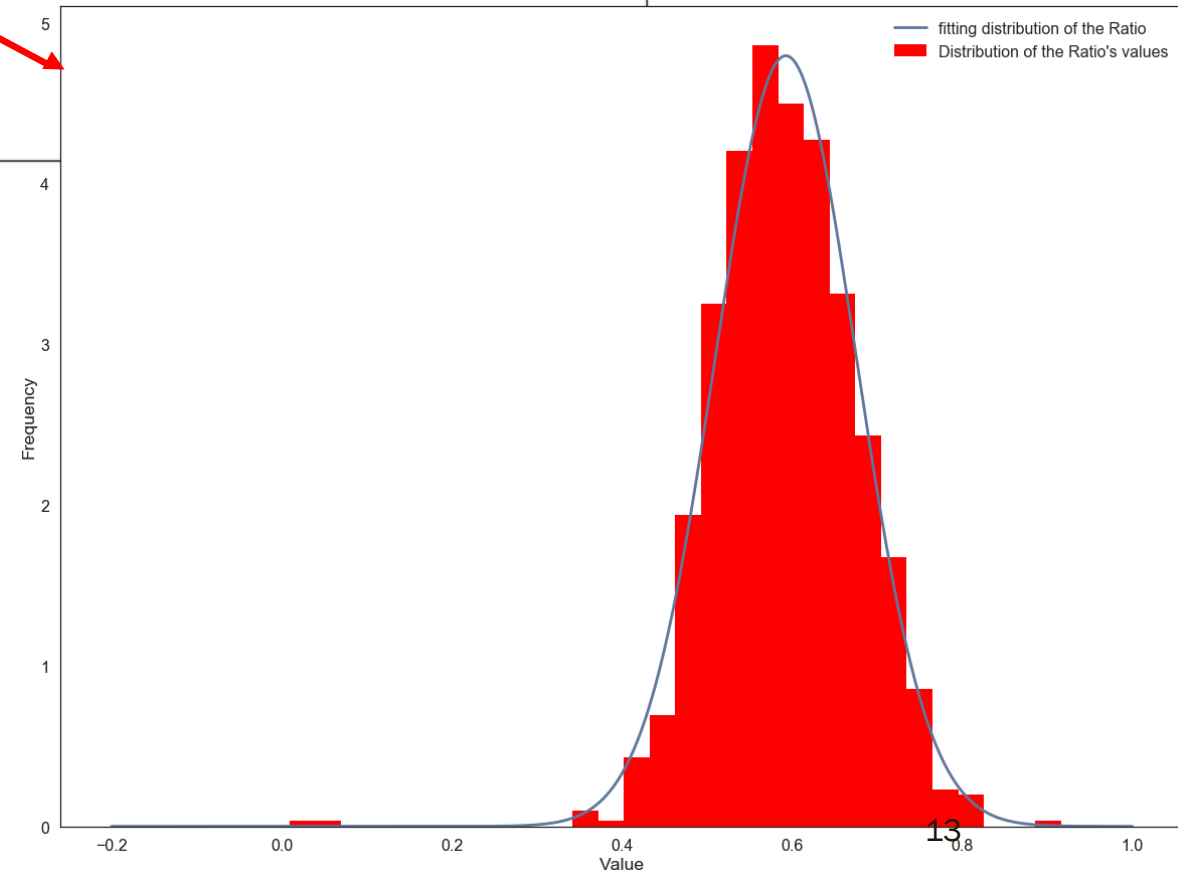
- The threshold is computed using the Standard Deviation --> 5% rejected



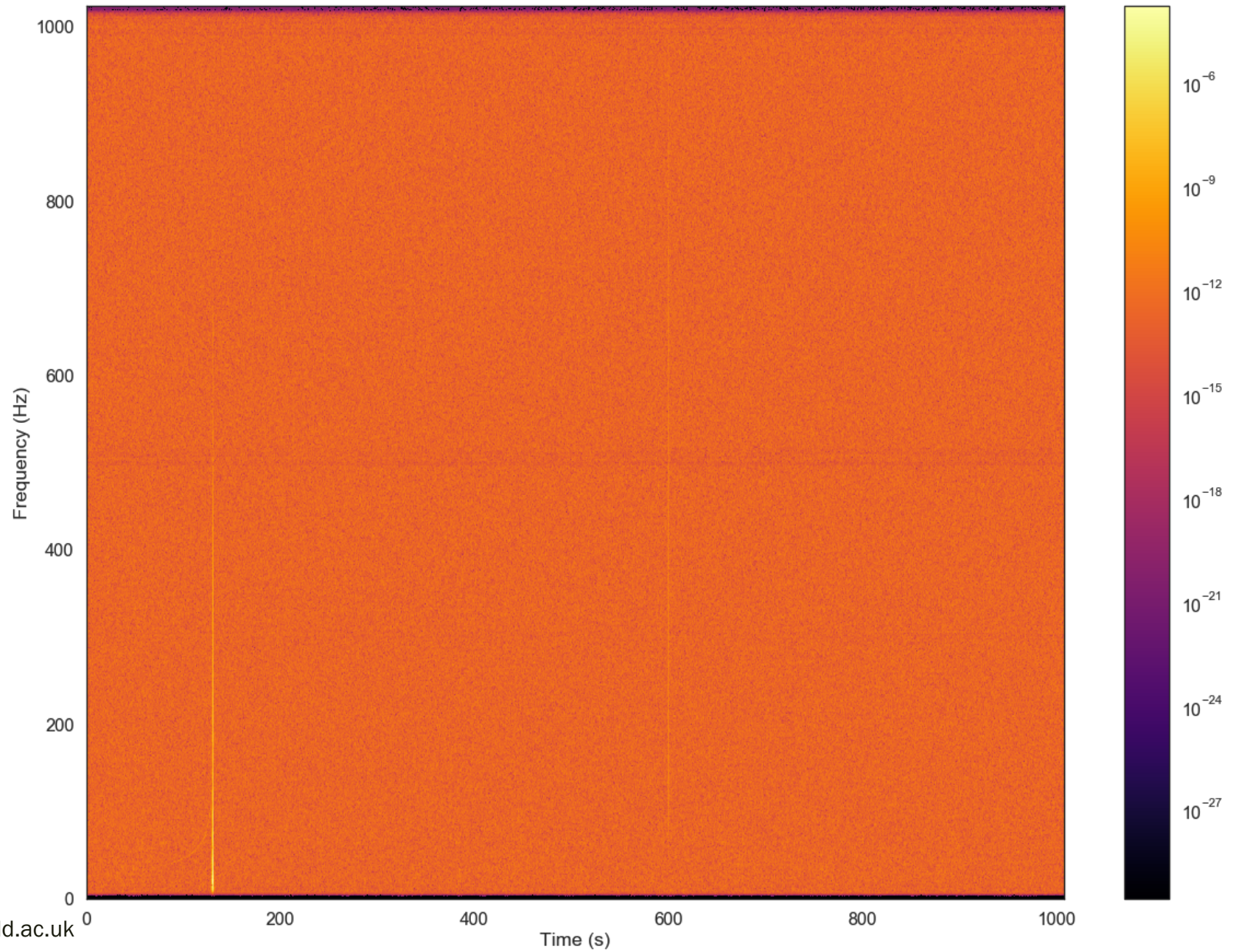
- Setting the Threshold on the Ratio



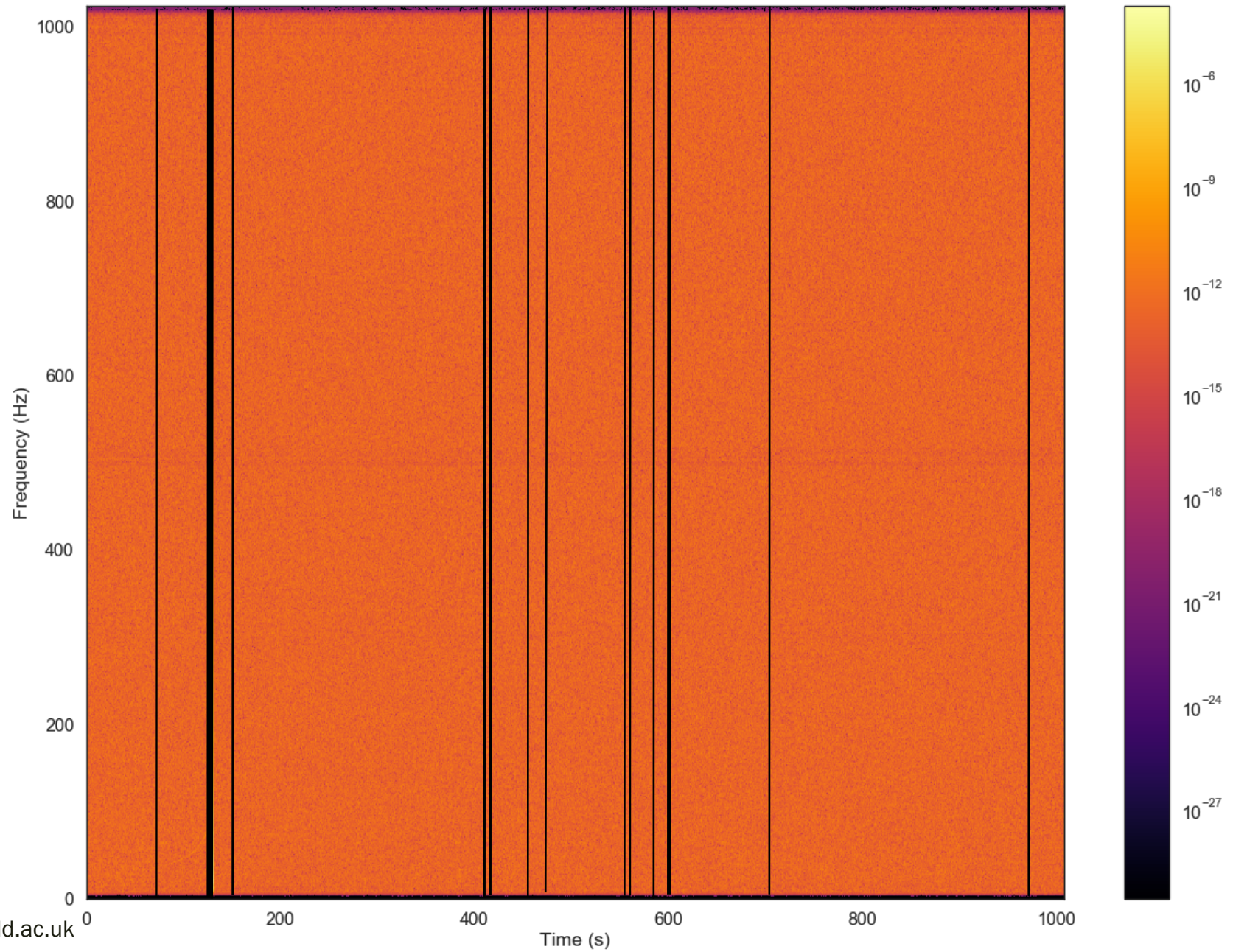
- The threshold is computed using the Standard Deviation \rightarrow 5% rejected



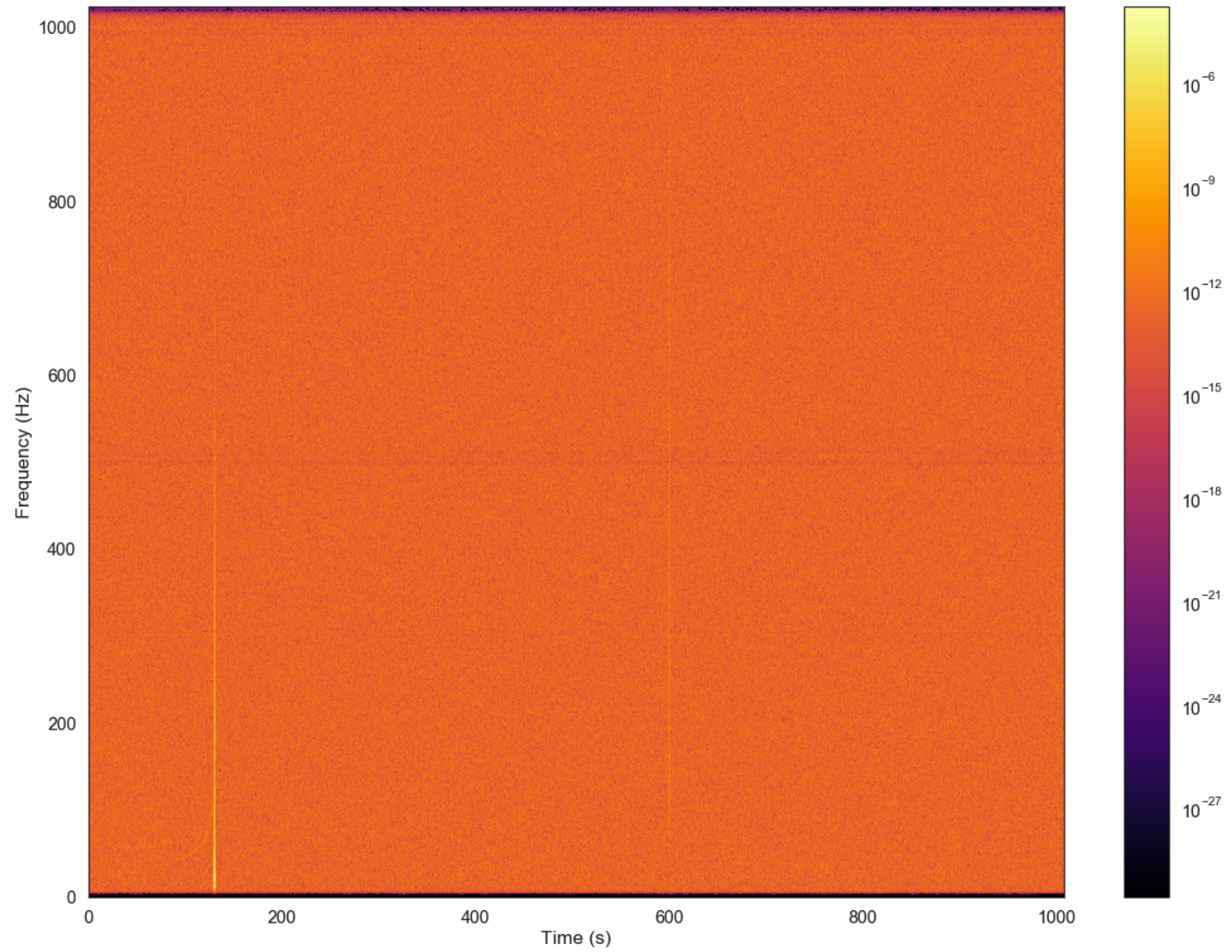
■ Apply Threshold on TF map: 5% rejected



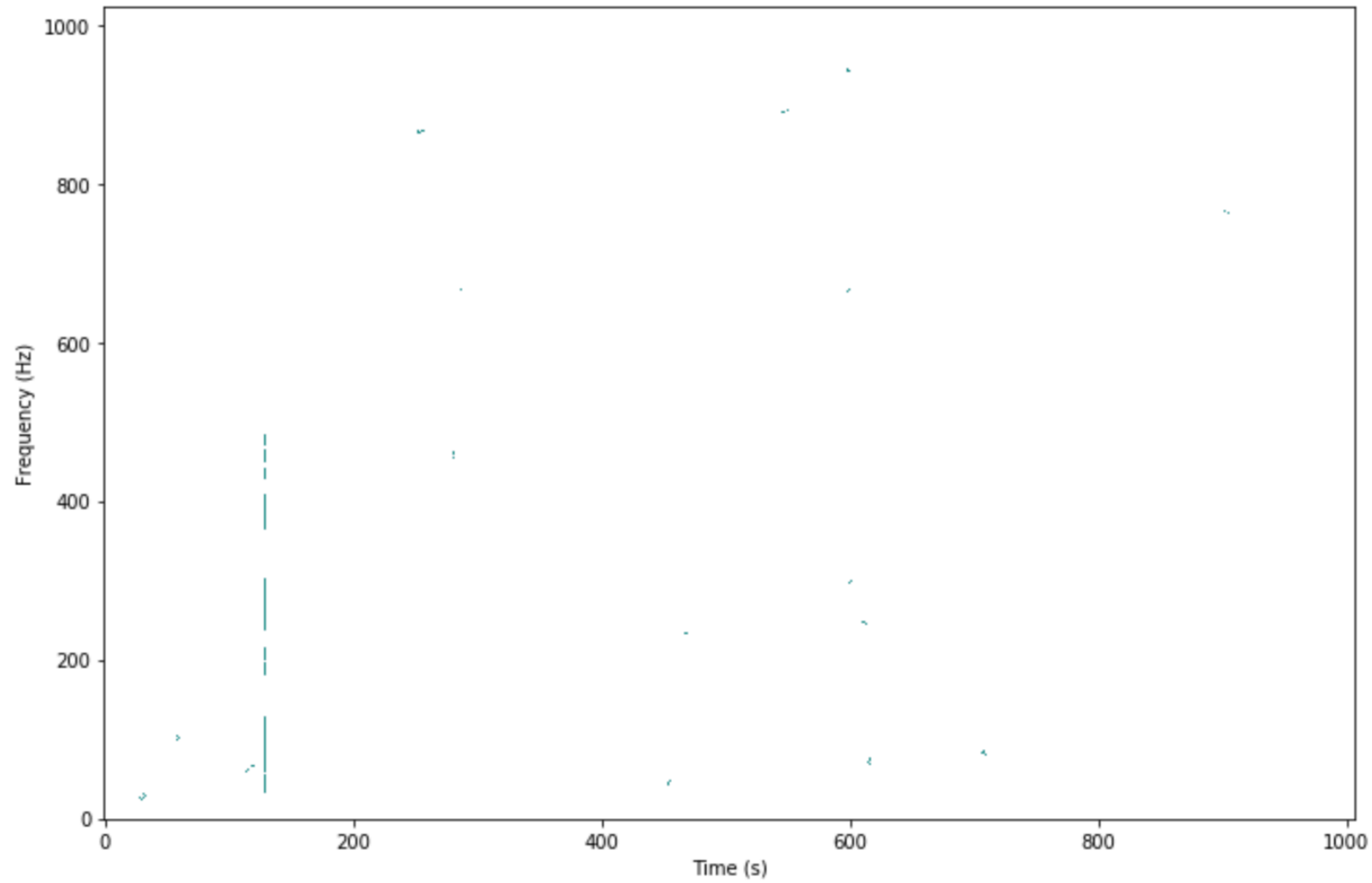
■ Apply Threshold on TF map: 5% rejected



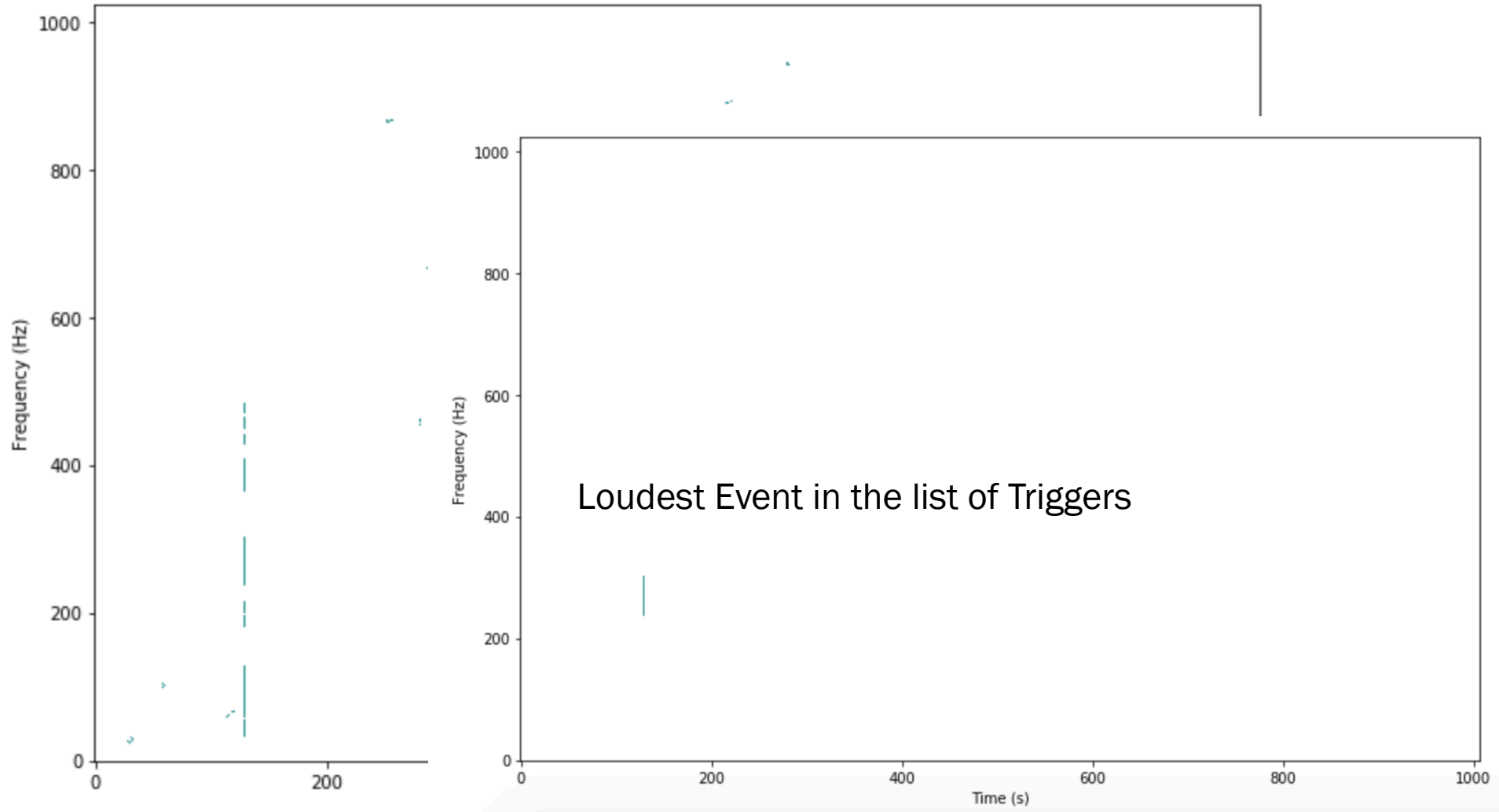
■ No Rejection method: 30 Loudest Triggers



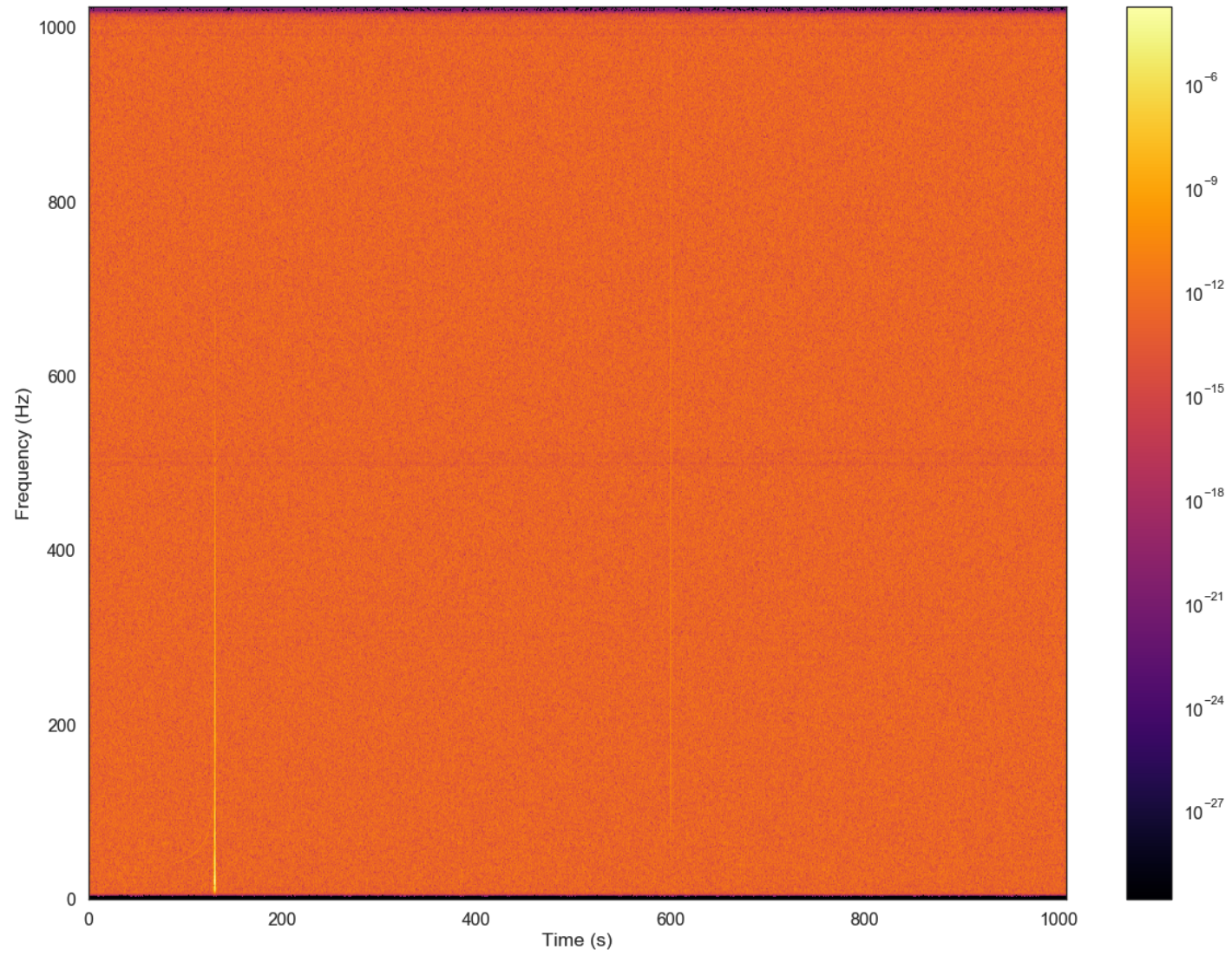
- No Rejection method: 30 Loudest Triggers



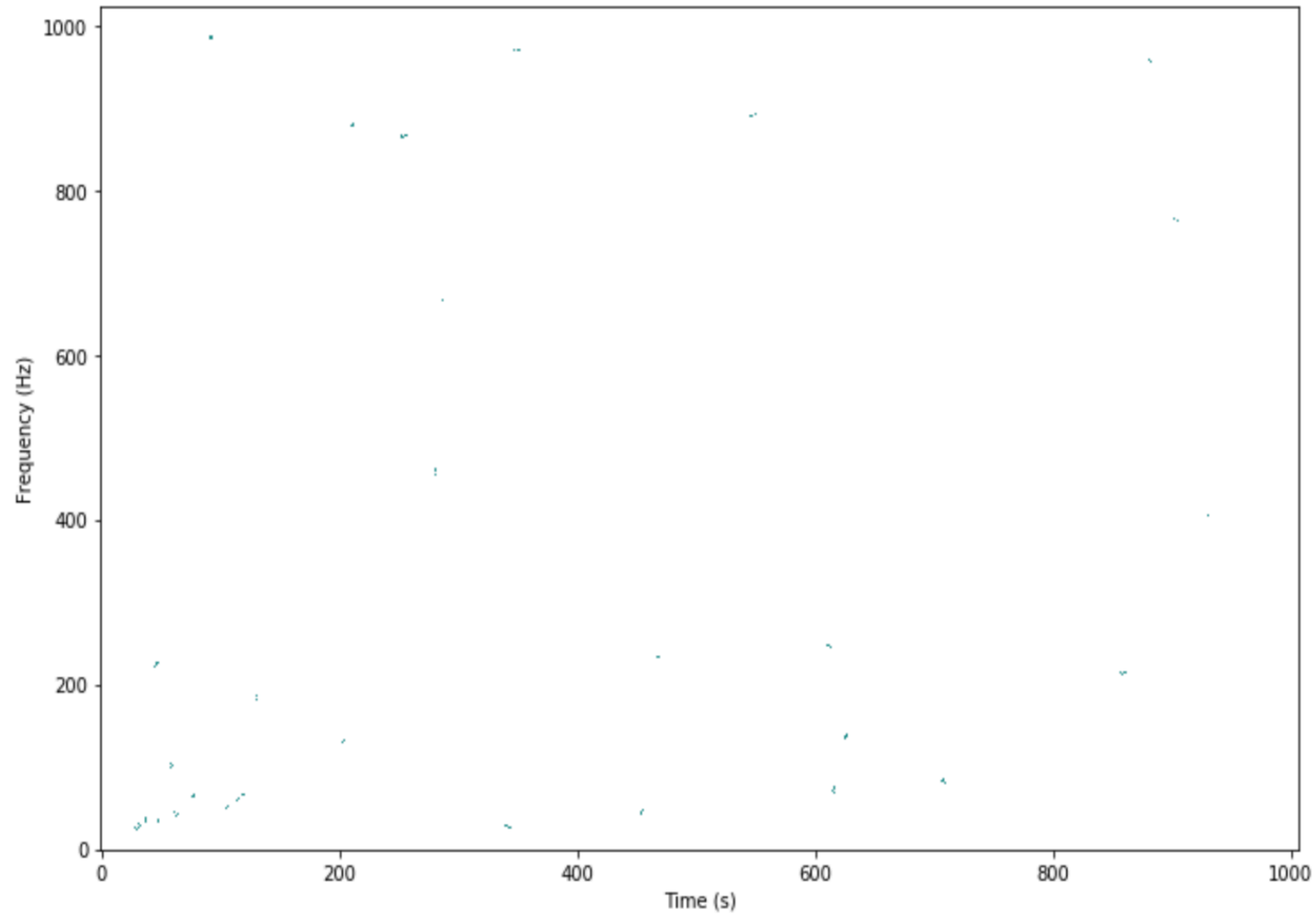
- No Rejection method: 30 Loudest Triggers



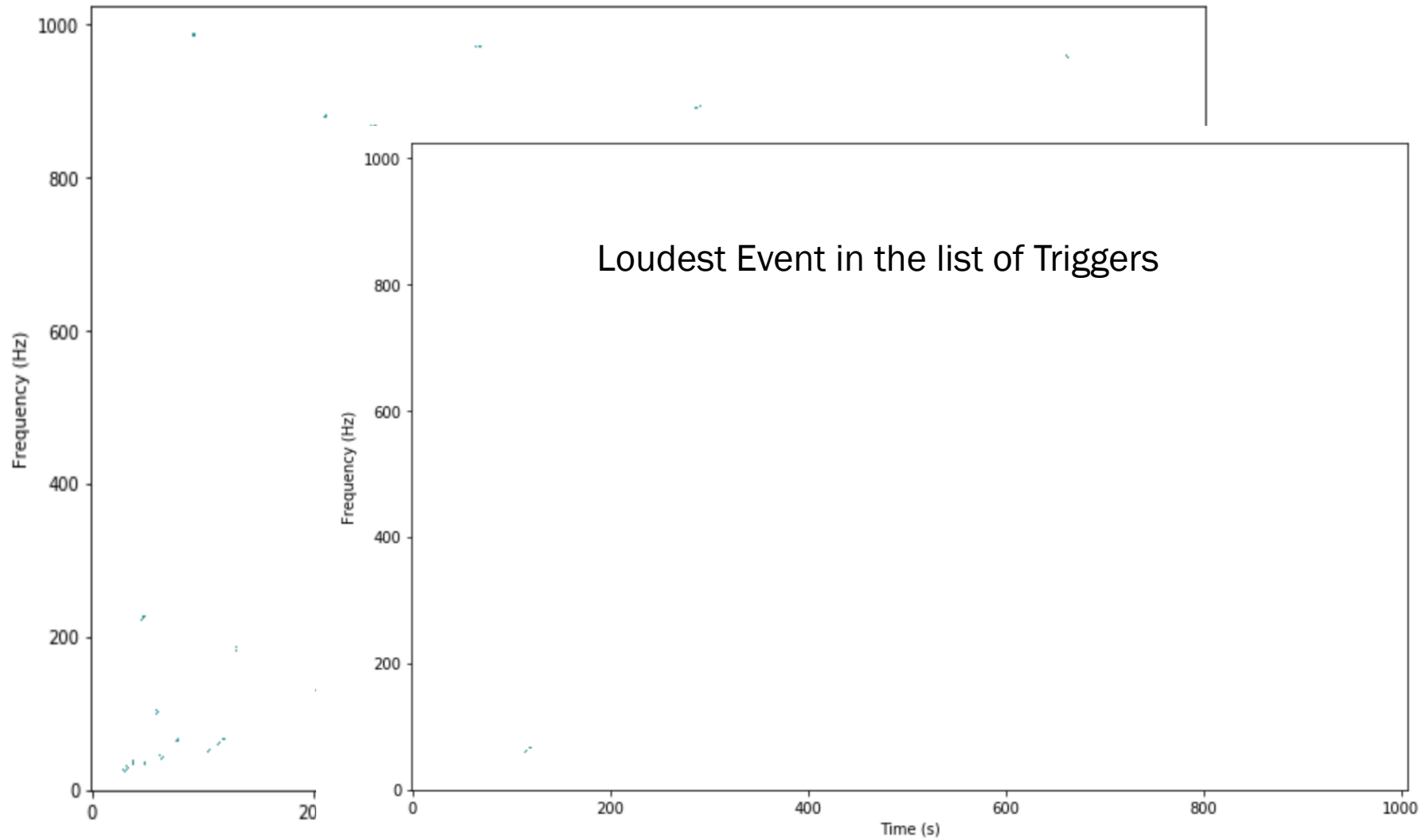
■ Glitch Rejection method: 30 Loudest Triggers



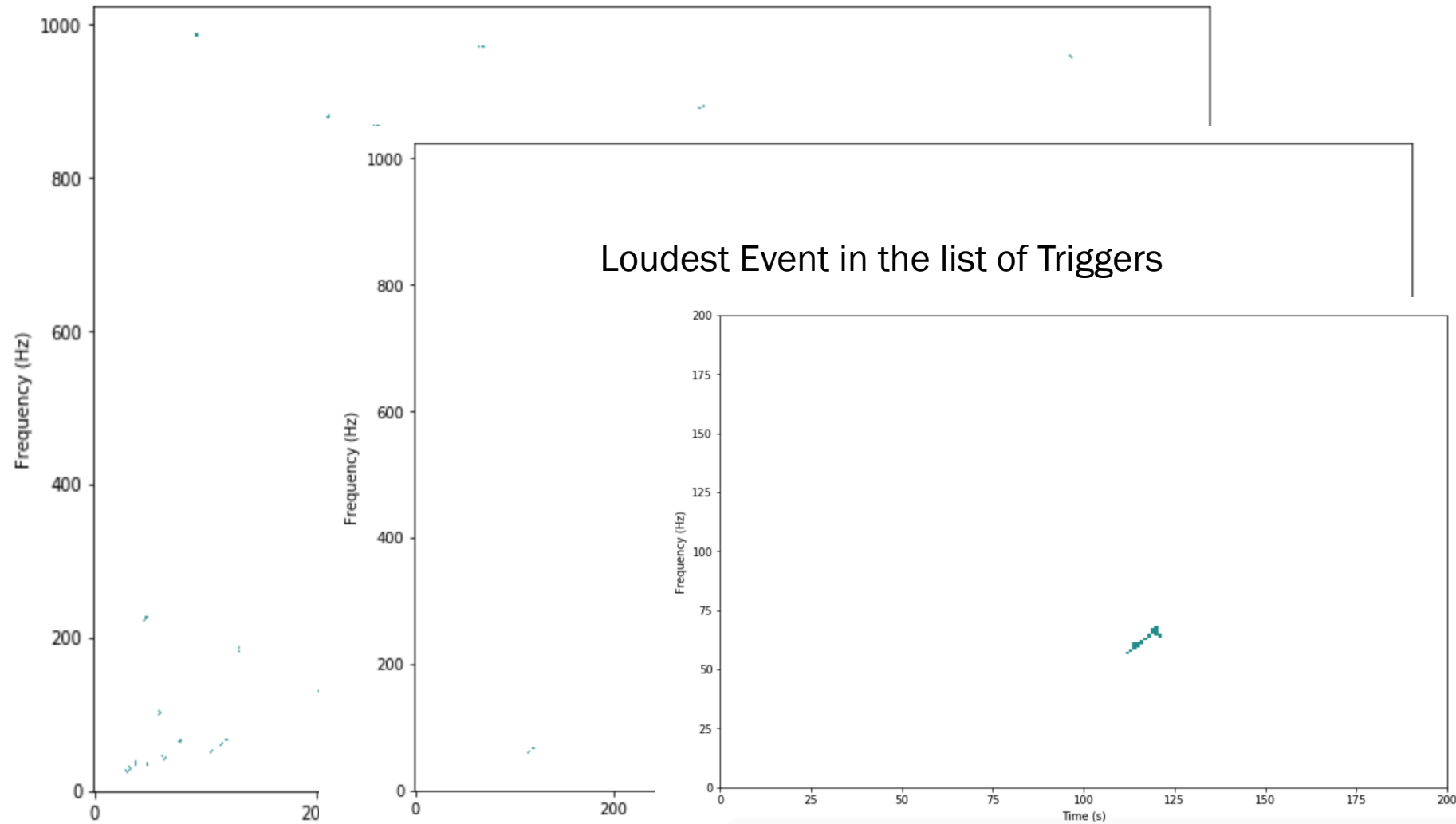
■ Glitch Rejection method: 30 Loudest Triggers



- Glitch Rejection method: 30 Loudest Triggers



■ Glitch Rejection method: 30 Loudest Triggers



SWOT ANALYSIS

Strengths



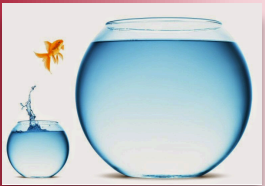
- Pre-processing analysis
- Improving sensitivity
- Improving reliability

Weaknesses



Multiplicity: Dependency on glitches features

Opportunities



Versatility: Application to signal processing where spherical harmonics are applicable

Threats



Hard-working:
Less appealing



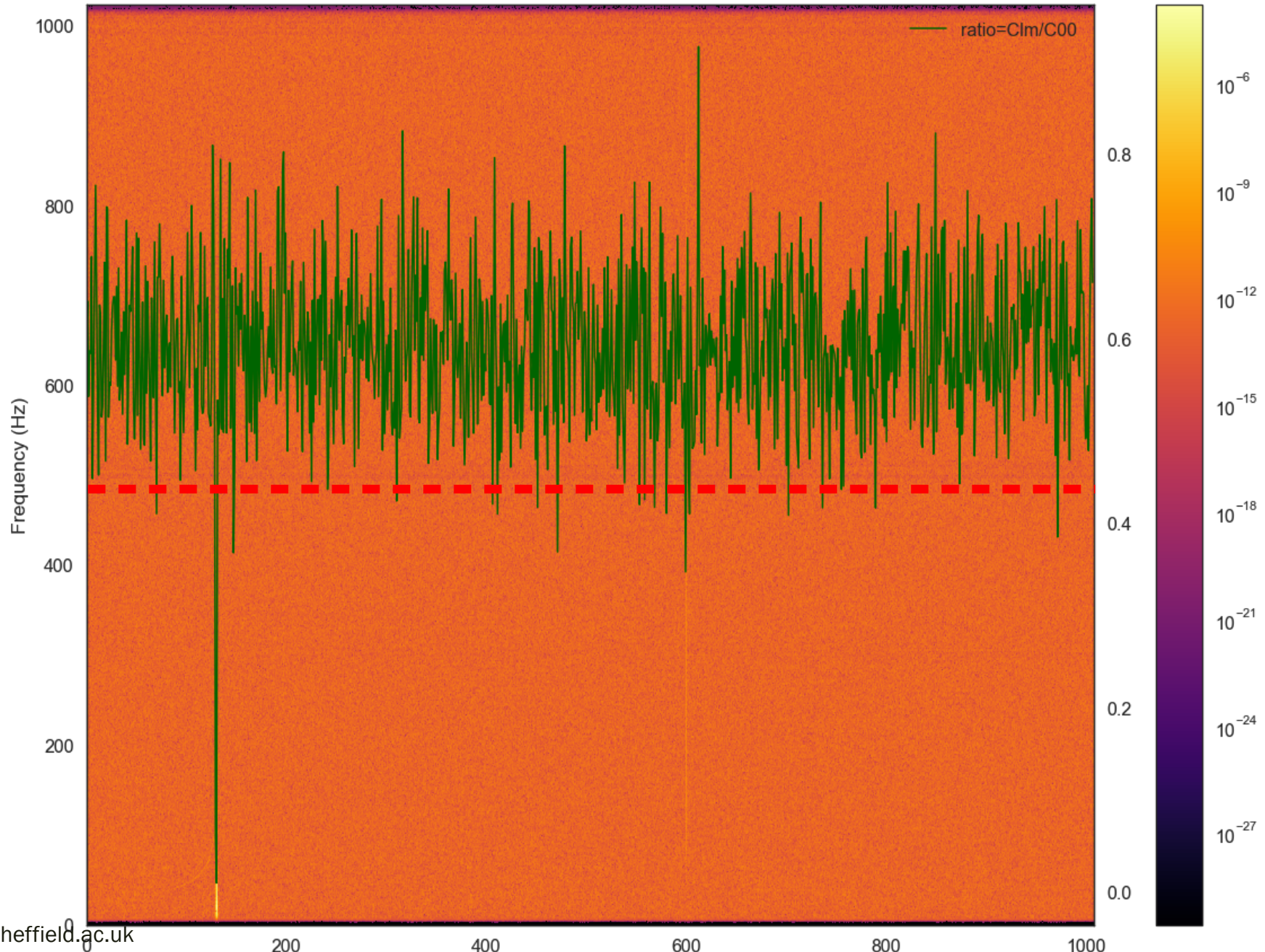
Thank you!!

Questions??

“The value of each pixel P on the time-frequency map is then a sum along the spherical harmonic coefficients c representing the energy in a time-frequency bin”⁴

$$P_{t,f} = \sum_{i,j=0}^d \xi_{ij}^{(lm)} = \sum_{l=0}^{l_{max}} \sum_{m=-l}^{m=l} (c_{lm})^2.$$

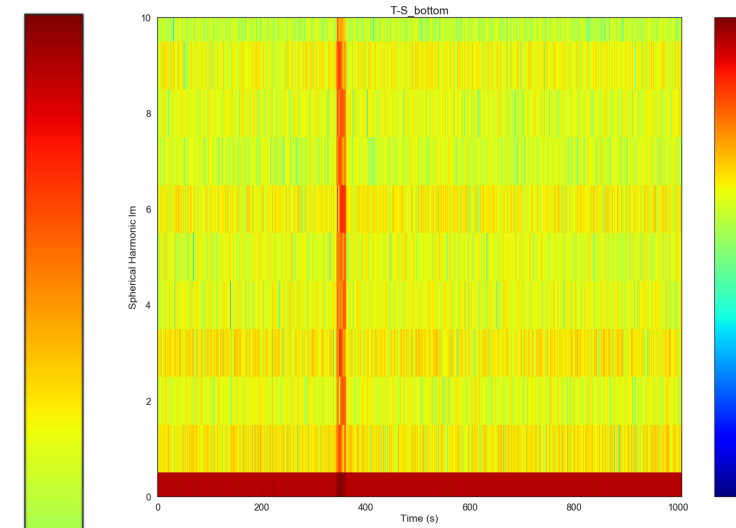
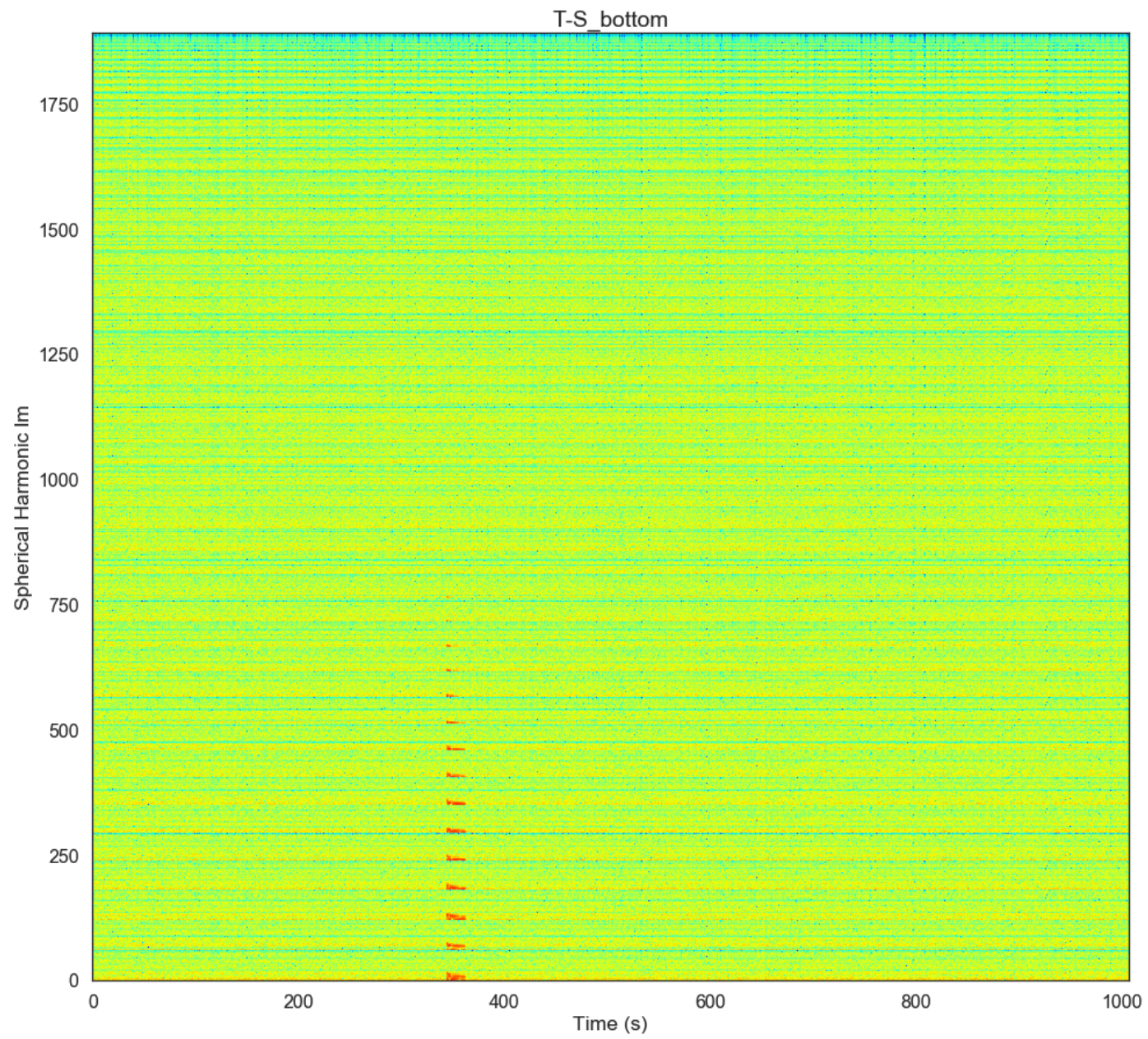
■ Apply Threshold on TF map: 5% rejected

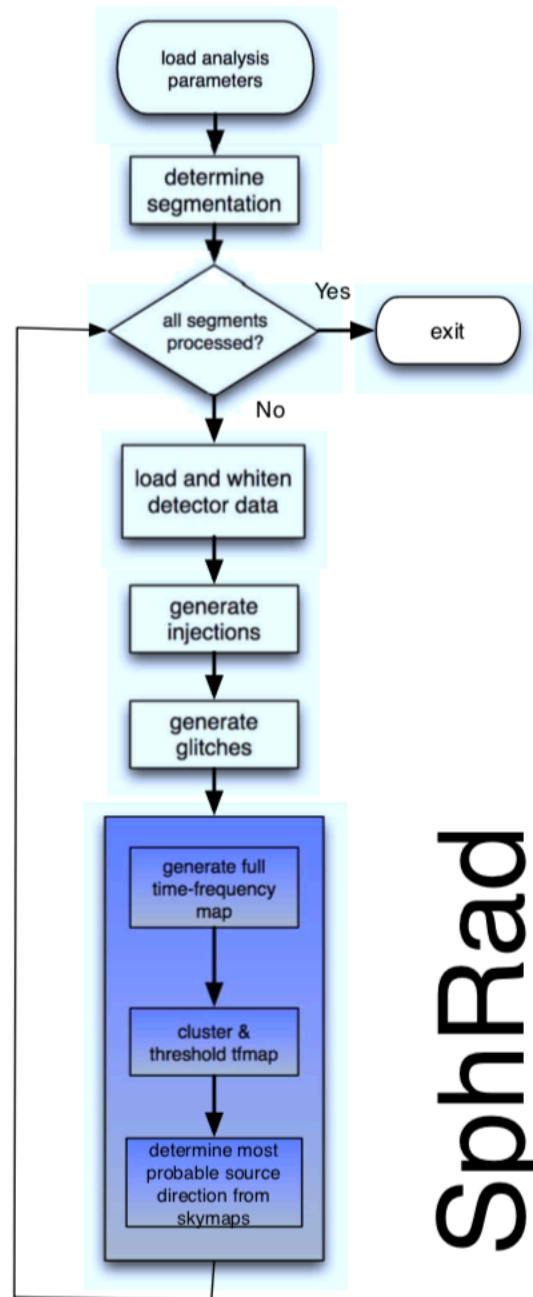


Spherical harmonics are an expansion of a function onto the sphere, expressed as the coefficients in a series of spherical harmonics up to and including order $l = l_{\max}$. The ordering of the coefficients in memory is as follows (expressed as (l,m) pairs, read left to right and top to bottom:

m value of row	coefficients stored as (l, m) pairs
$m=0$	$(0, 0), (1, 0), (2, 0), (3, 0), \dots, (l_{\max}, 0)$
$m=1$	$(1,+1), (2,+1), (3,+1), \dots, (l_{\max},+1)$
$m=2$	$(2,+2), (3,+2), \dots, (l_{\max},+2)$
$m=3$	$(3,+3), \dots, (l_{\max},+3)$
\vdots	\vdots
$m=l_{\max}$	$(l_{\max},+l_{\max})$
$m=-l_{\max}$	$(l_{\max},-l_{\max})$
\vdots	\vdots
$m=-3$	$(3,-3), \dots, (l_{\max},-3)$
$m=-2$	$(2,-2), (3,-2), \dots, (l_{\max},-2)$
$m=-1$	$(1,-1), (2,-1), (3, -1), \dots, (l_{\max},-1)$

TABLE B.1: Table showing the order of spherical harmonic coefficients, expressed as (l, m) pairs, read left to right and top to bottom. [2]





SphRad

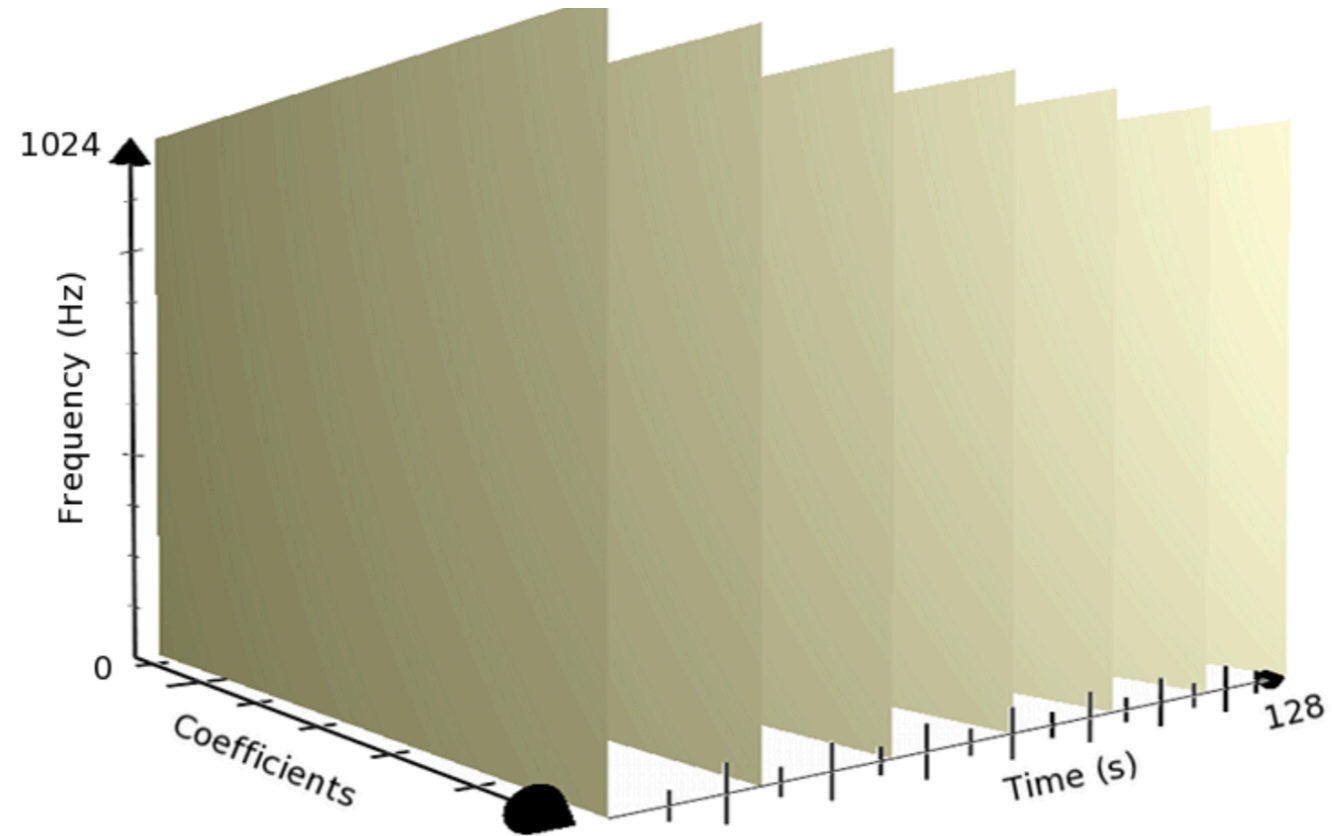


FIGURE 4.3: Illustration of a Time-Frequency-Spherical harmonic coefficients cube. Each plane represents the output of the correlator for a segment of data as in Figure 4.2