



Euclid transient search

L. Izzo

INAF-Osservatorio Astronomico di Capodimonte

on behalf of the EUCLID Supernovae and Transient WG

Euclid surveys

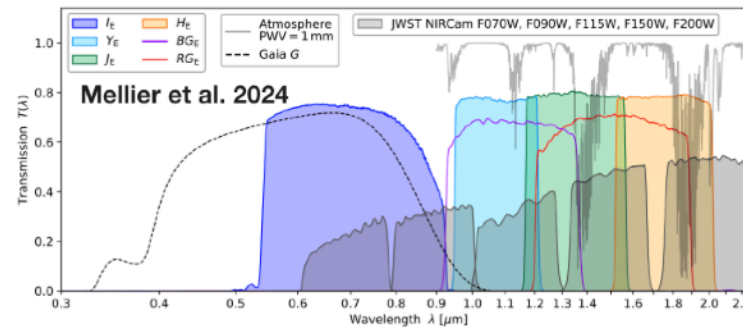
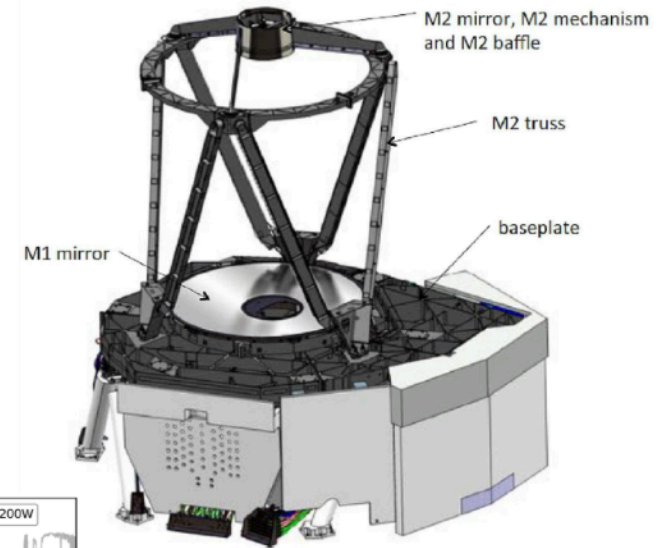
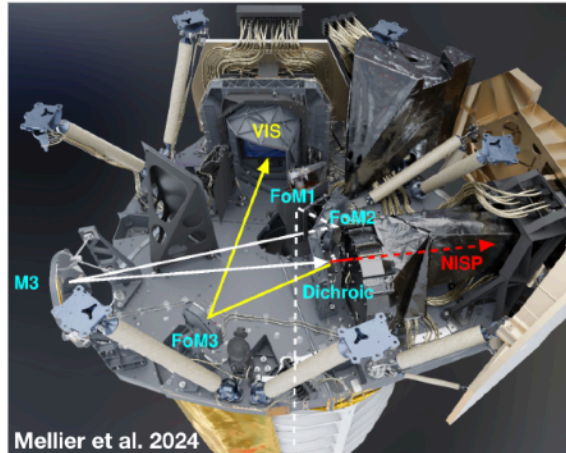
1.2-m-aperture telescope covering a FoV of 0.53 deg² with a visual imager (**VIS**) and a NIR Spectrometer and Photometer (**NISP**)

VIS

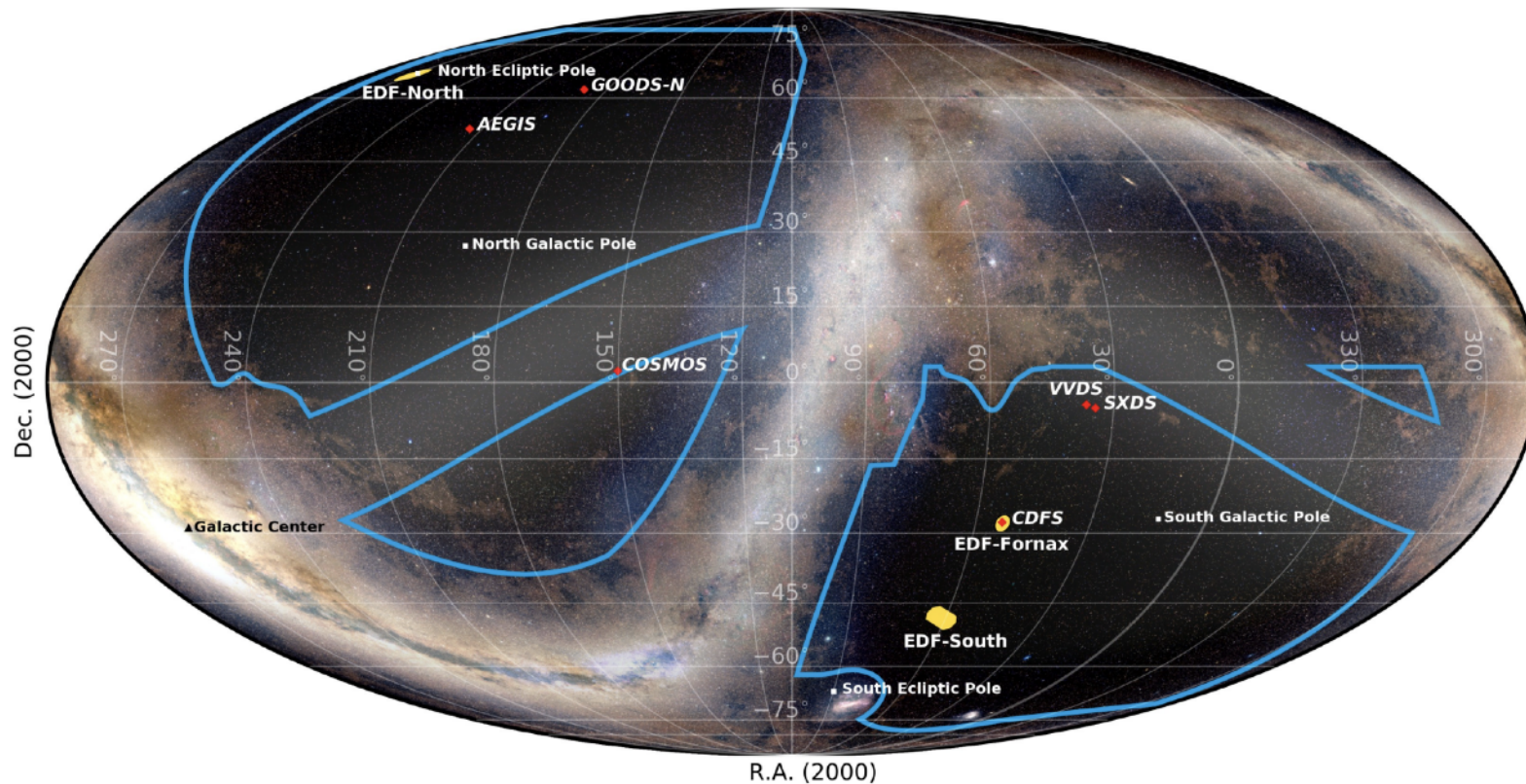
- Field of view 0.787x0.709 deg²
- Wavelength range 550-900 nm
- Detector 36 arrays
4kx4k CCD
- Pixel size 0.1"
- FWHM 0.2"

NISP

- Field of view 0.763x0.722 deg²
- Wavelength range
 - imaging Y J H
 - spectroscopy 1100-2000 nm
- Detector 16 arrays
2kx2k HgCdTe detectors
- Pixel size 0.3"
- FWHM 0.3"
- Spec. Resolution 250



Euclid surveys



(Mellier et al 2024)

Wide Survey:

14,000 deg²
 VIS: 24.5 mag (10σ)
 Y/J/H: 24.0 mag (5σ)

Deep Survey:

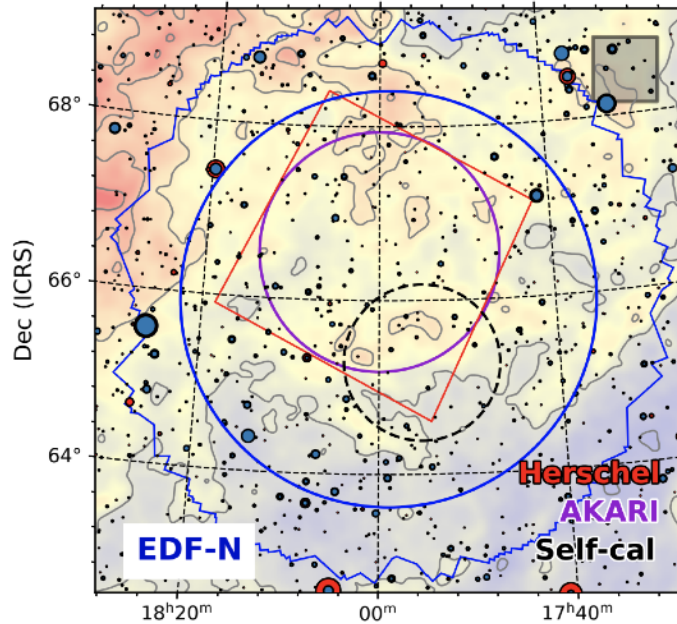
53 deg²
 VIS: 26.5 mag (10σ)
 Y/J/H: 26.0 mag (5σ)

Auxiliary fields

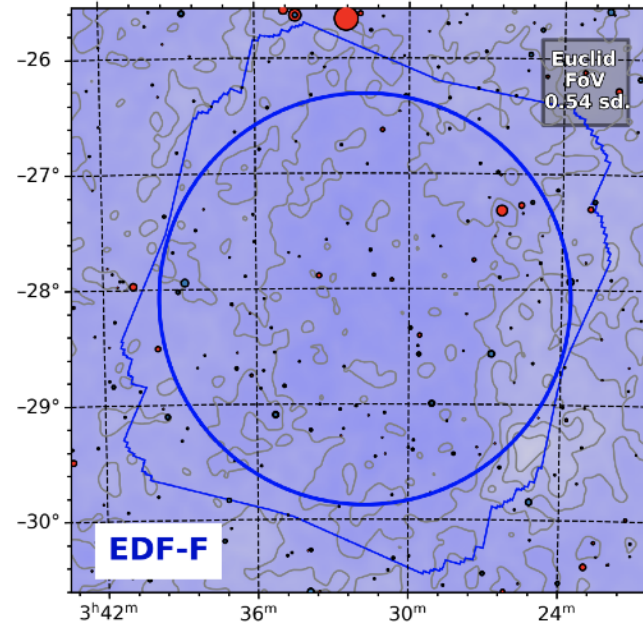
NIR self-calibration field
 Photo-z calibration field

Euclid Deep Fields

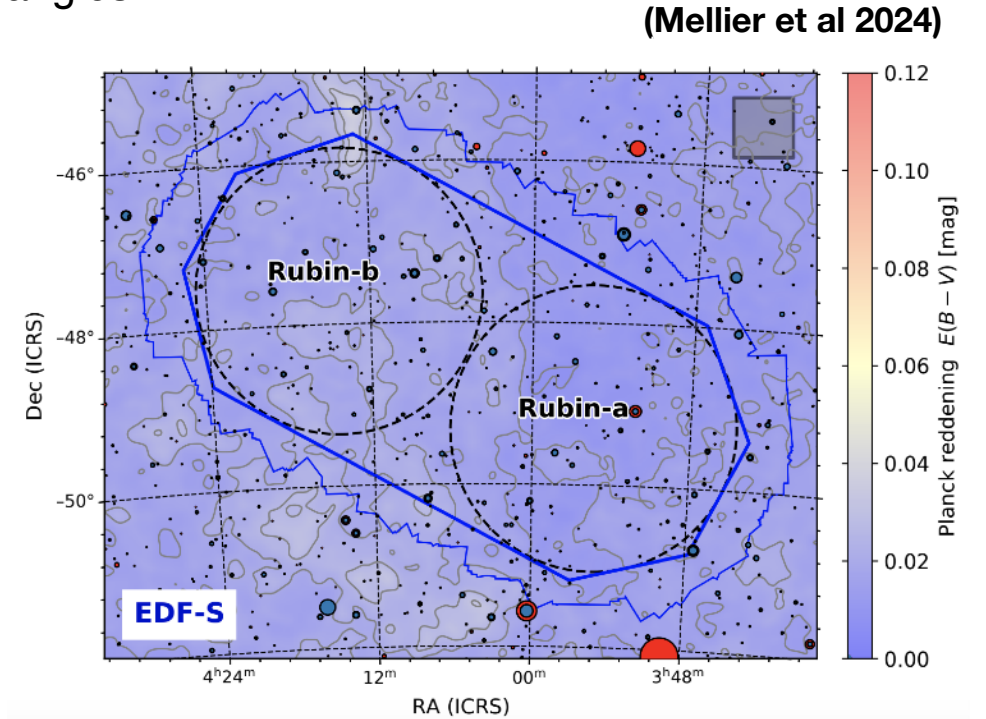
- Deep Fields take up 12% of the total survey time
- Visits at regular intervals during the mission with different observation angles
- Two magnitudes deeper than the Wide Survey



Overlap with *Spitzer* deep fields
SelfCal field



Includes Chandra Deep Field South



Important spatial and temporal overlap with *Vera Rubin LSST* (including partial ComCam)



Why do transient search with Euclid?

Euclid optical and NIR survey is a unique opportunity for a transient search

- simultaneous transient detections (and follow-up) with VIS and NIR images
- high resolution and deep limiting magnitude of optical images
- simultaneous analysis of photometric and spectroscopic data
- photometric redshifts of host galaxies
- high-redshift transients



Why do transient search with Euclid?

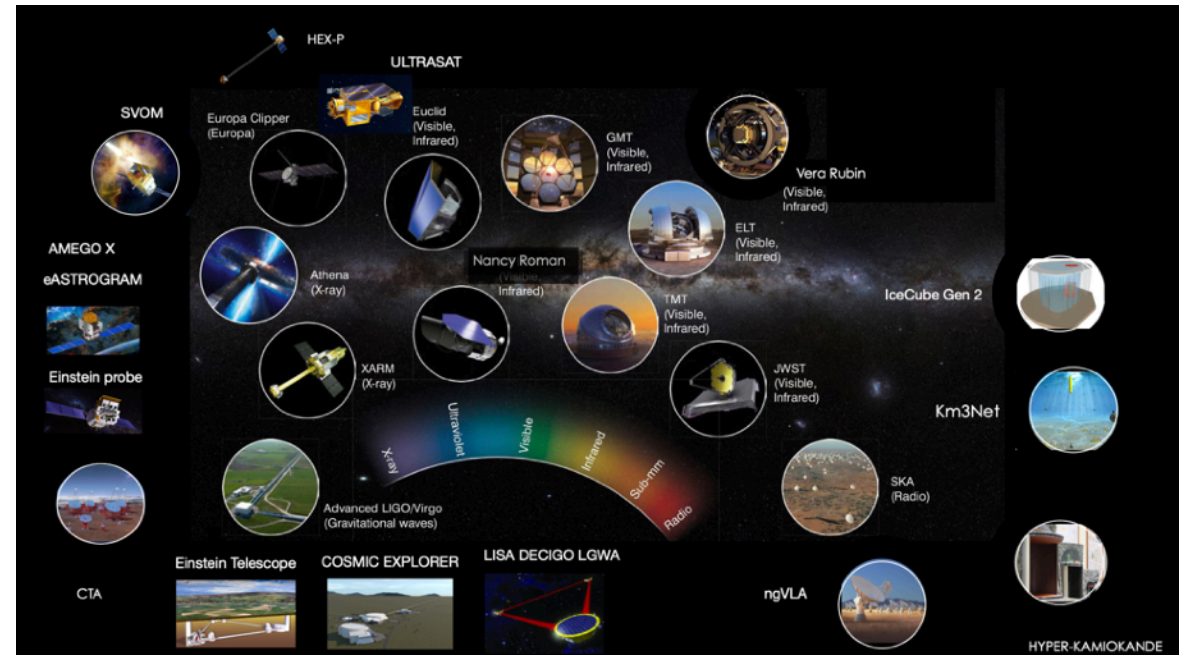
Science cases

- Supernova Ia cosmology with NIR data & high-redshift
- Supernova rates in dusty environments and at high-redshift
- Very high-z and/or long-lasting transients (e.g. SLSNe, PISNe)
- Nearby Universe: progenitor studies & intrinsically-faint red transients (LRNe, ILRT)
- Lensed Supernovae
- Host galaxies of distant transients & GW events (bright/dark sirens)

SNT-WG activities

Several standard projects/activities going-on

- Host galaxy studies
- SLSNe & PISNe at high redshifts
- Lensed transients
- SN Ia cosmology with LSST and LS4
- Dust obscured transients
- Photometric classification
- SN statistics and rates
- Synergies with other transient surveys
- Progenitor studies

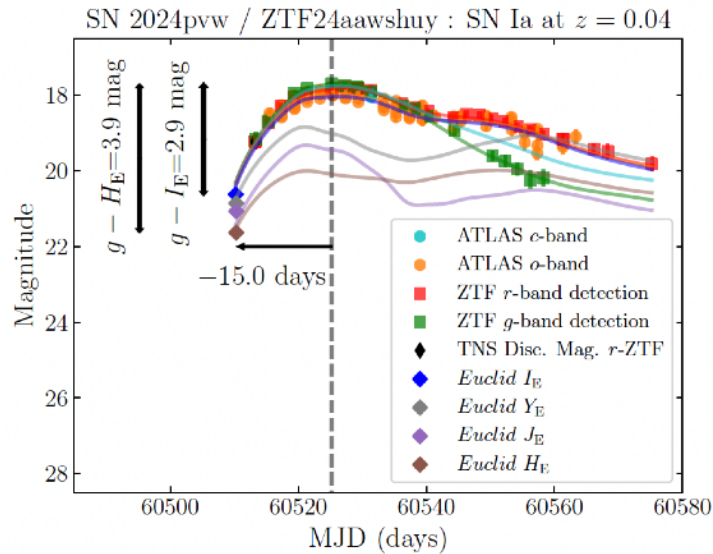


Photometric studies of known transients with Q1

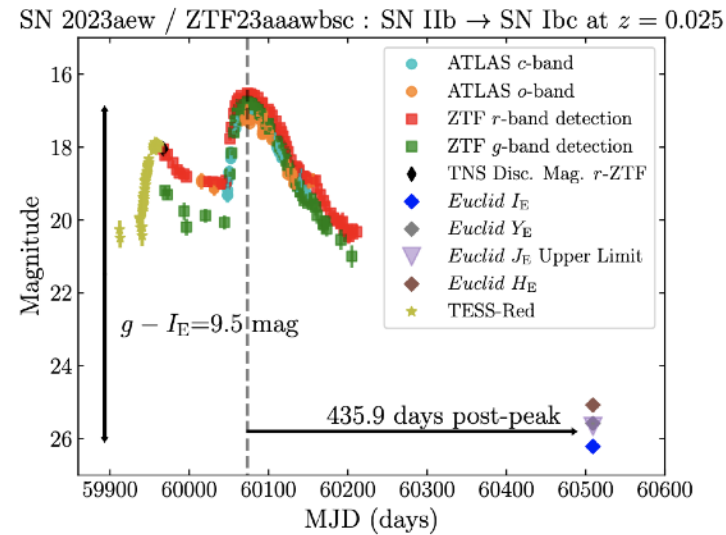
(Duffy et al 2025)

161 known transients in Q1 images

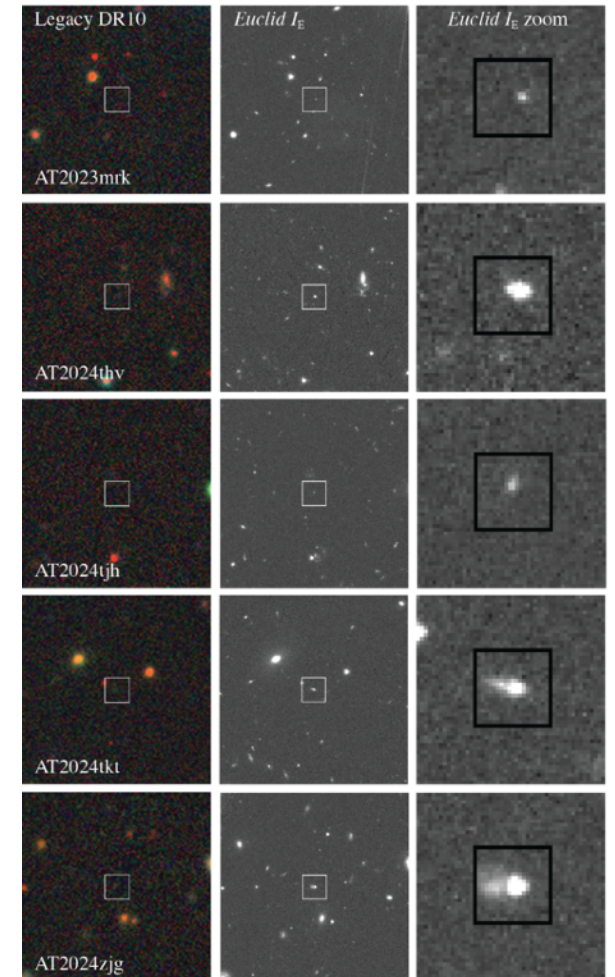
Early NIR detections



Late optical detections



Orphans host galaxies



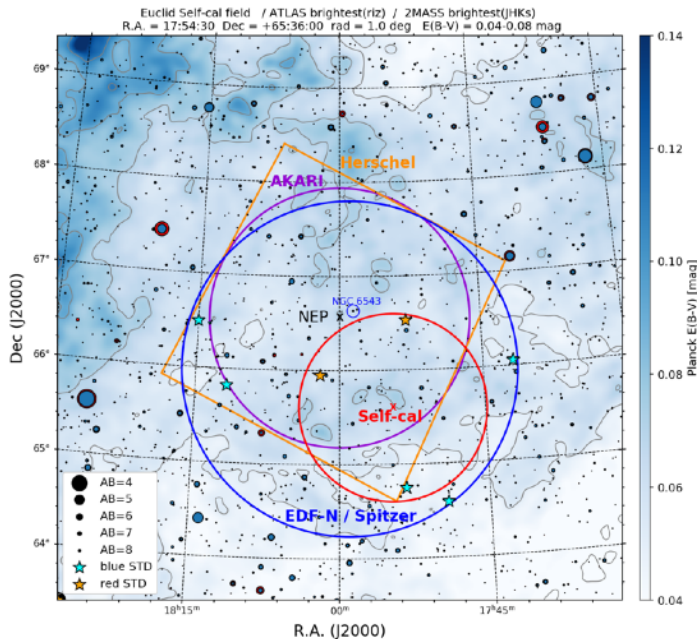
Similar project for DR1

KP: Euclid transient search in the Self-Cal field

(Cappellaro et al in prep)

DR1-KP-SNT-1

SelfCal field



~3 deg² field with multi-epoch observations

9 epochs during PV phase

1 epoch per month during nominal mission

Aims

Demonstration of Euclid capabilities to detect transients on both NISP and VIS images

Optimization of Difference Image Analysis tools for Euclid

Development of a transient database tools for cross matching catalogues, classifying transients...

Requirement

Early access to raw data

Fast data reduction and analysis

DR1: 30 total visits for transient search (up to May 2025)



KP: Euclid transient search in the Self-Cal field

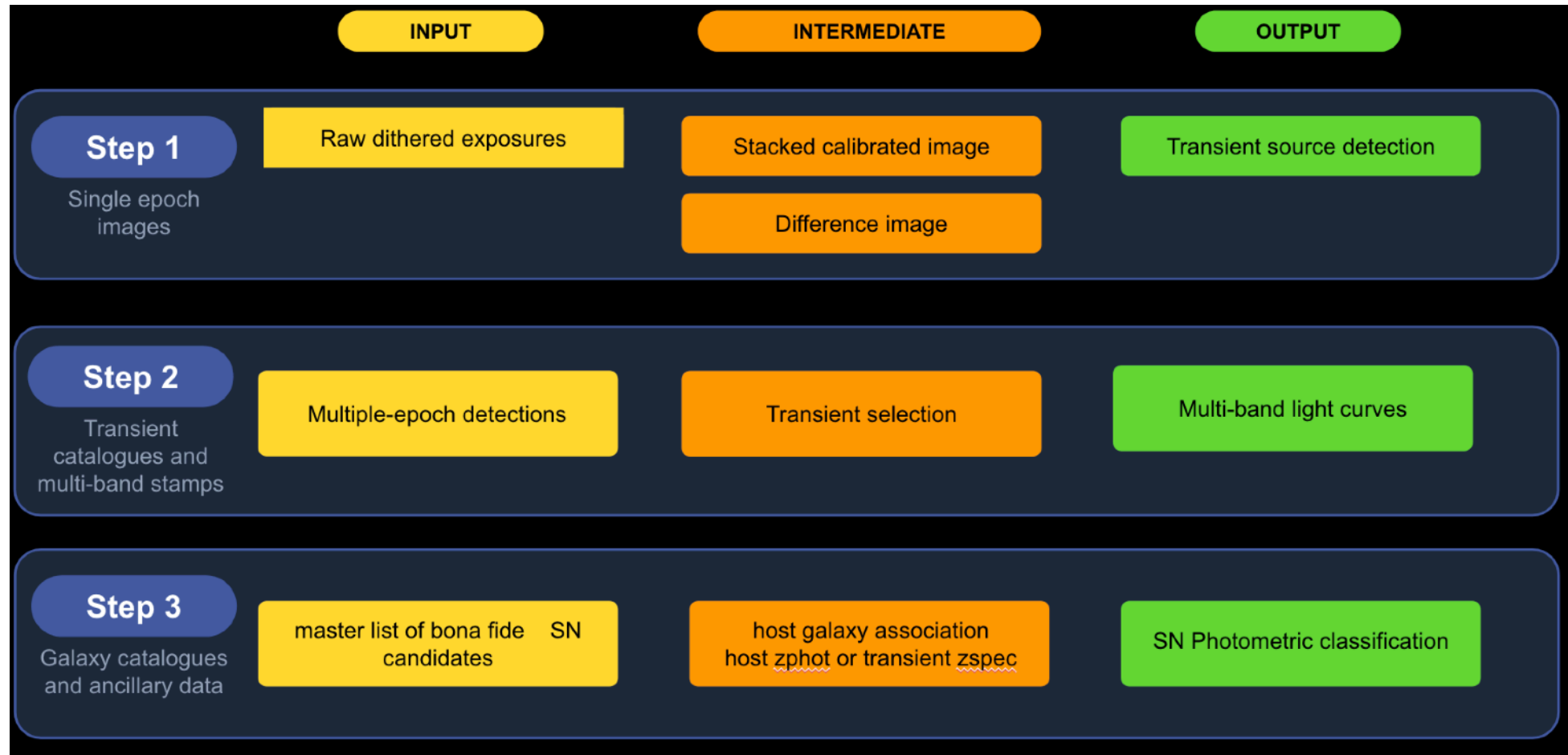
(Cappellaro et al in prep)

DR1-KP-SNT-1

Transient Pipeline
working on Datalab
(EC-Spritz)

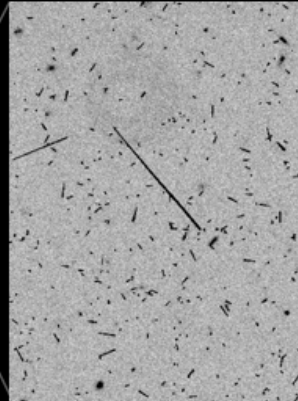
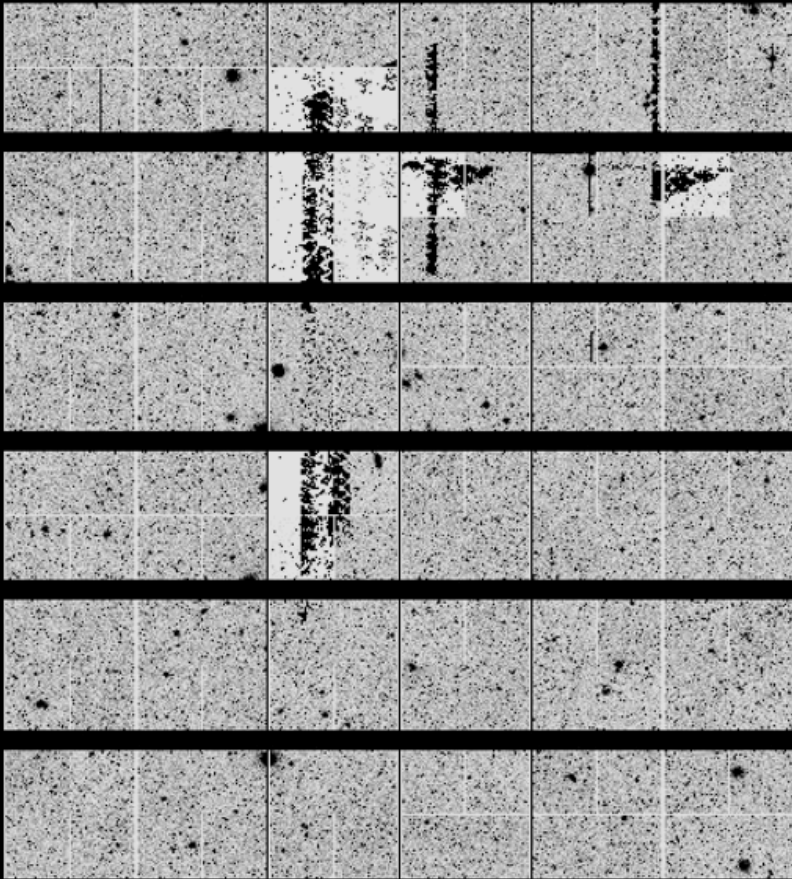
Work on LE1 data

astrometrically &
photometrically
calibrated stacked
frames

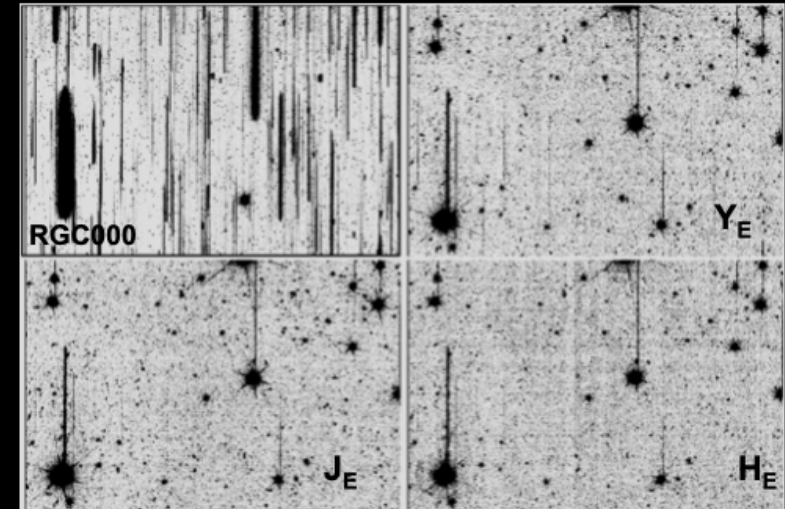


single epoch image analysis

cosmic ray removal



persistence correction for NISP data

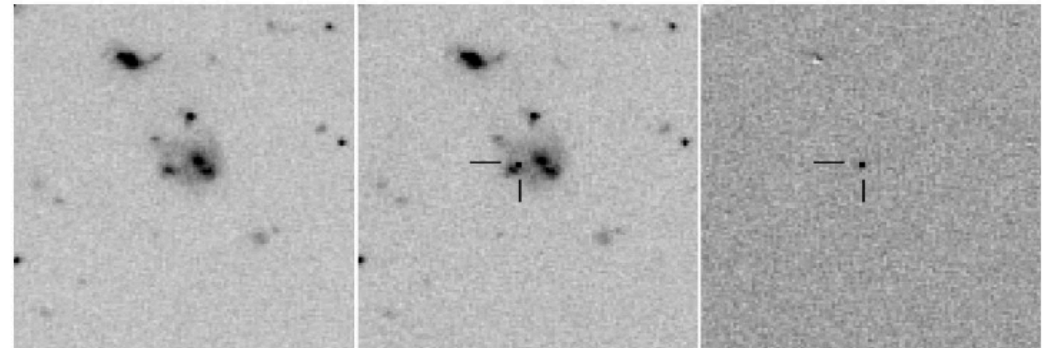
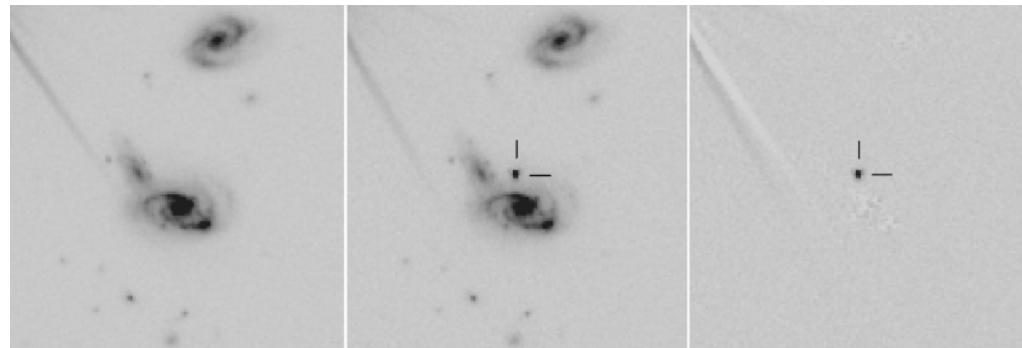
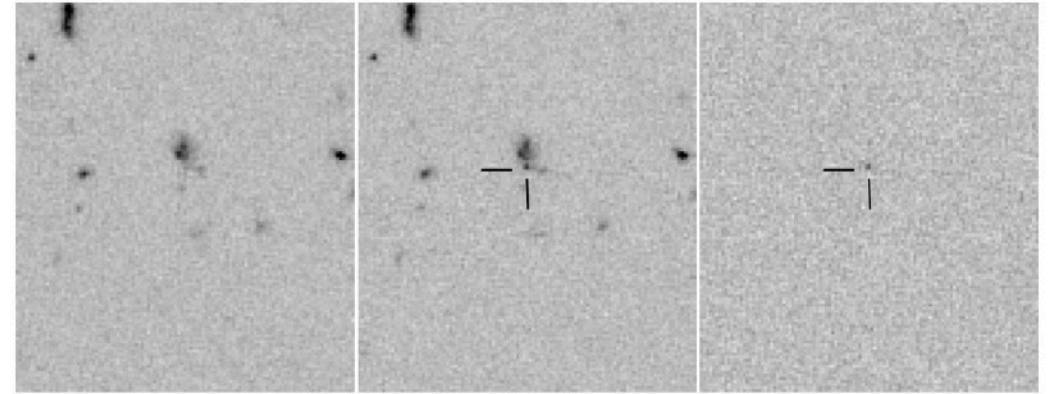
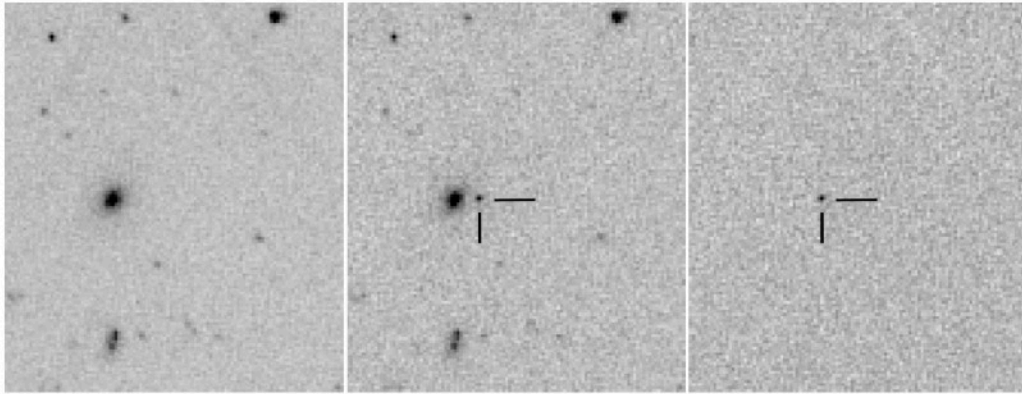


astrometric calibration

photometric calibration

KP: Euclid transient search in the Self-Cal field

Transient detection examples



KP: Euclid transient search in the Self-Cal field

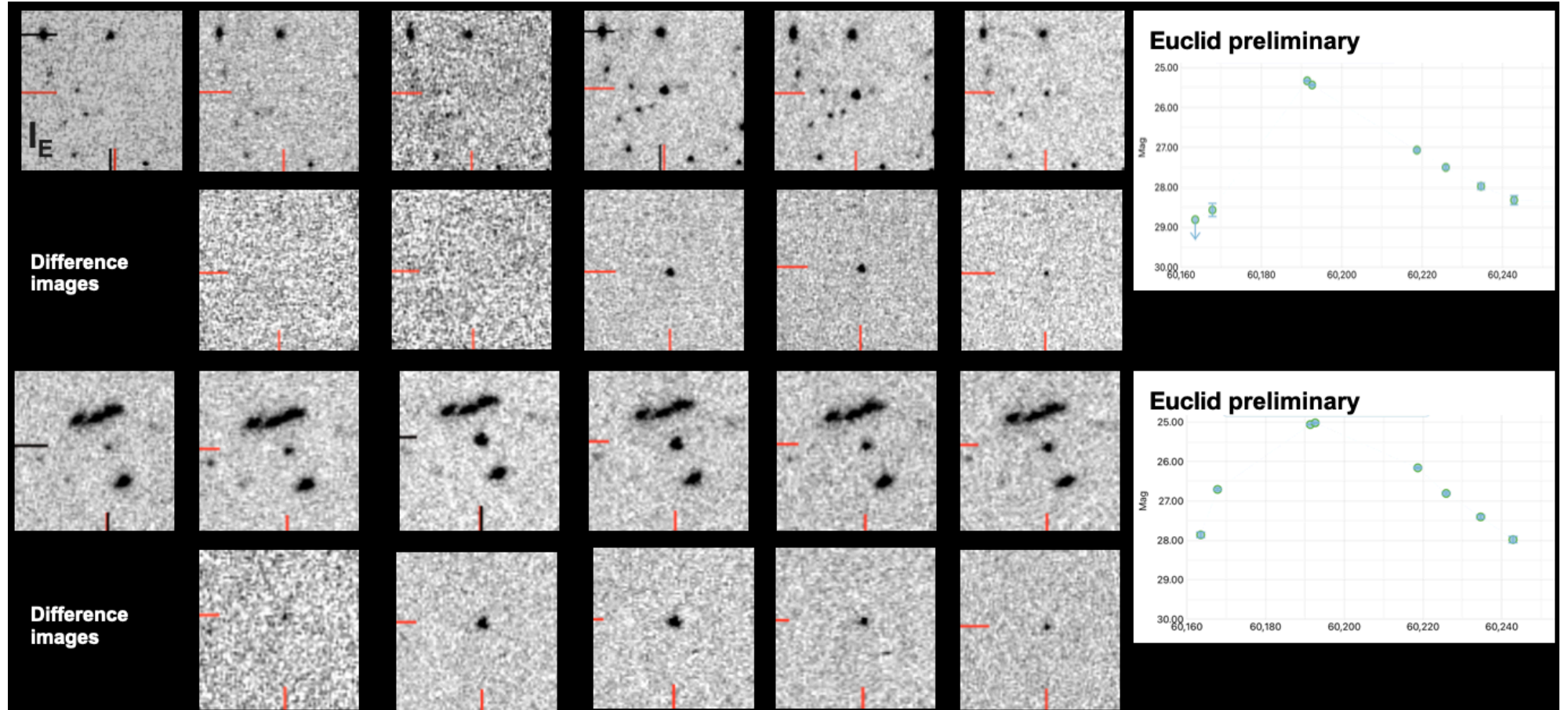
(Cappellaro et al in prep)

DR1-KP-SNT-1

Multi-epoch
Image analysis

Detailed optical
light curves

Faint
magnitude limits



KP: Euclid transient search in the Self-Cal field

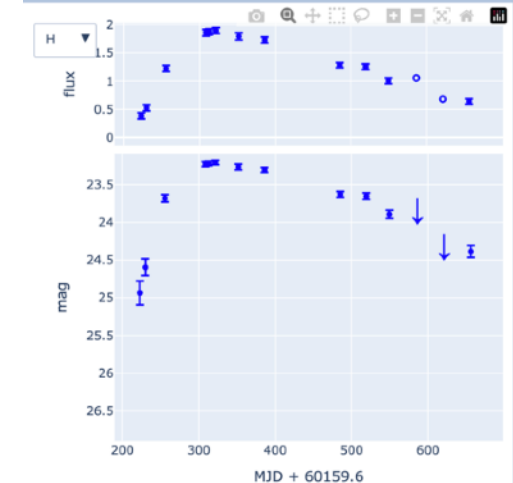
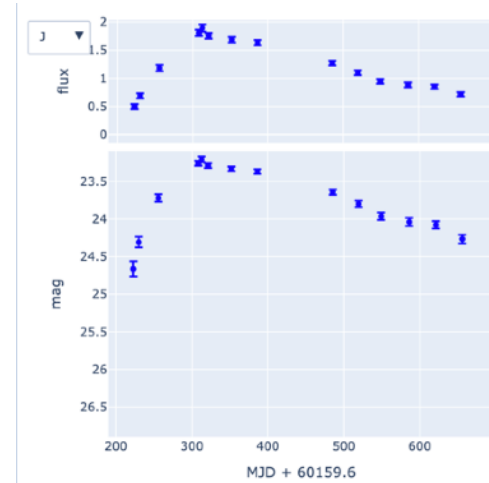
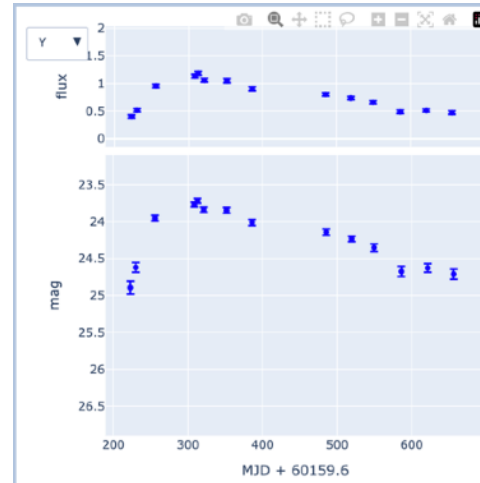
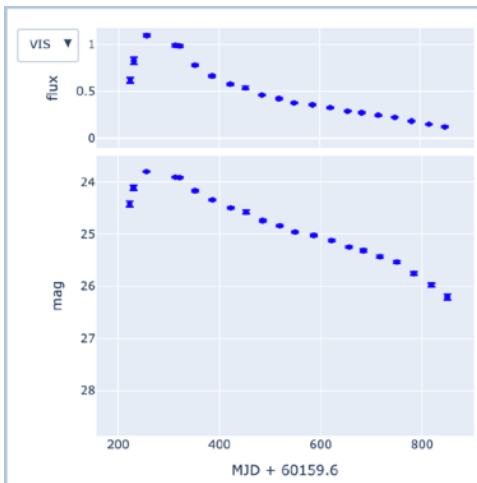
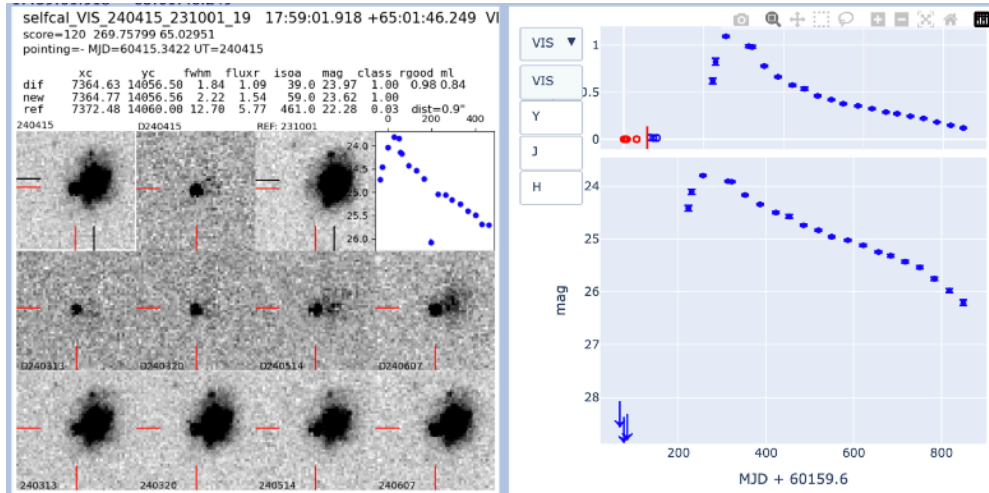
(Cappellaro et al in prep)

Combined optical-NIR & Image analysis

forced PSF photometry at the position of the selected candidates images

final selection based on the inspection of the light curves

Building a precious dataset for further studies (on-going)



KP: Euclid transient search in the Self-Cal field

(Cappellaro et al in prep)

First results

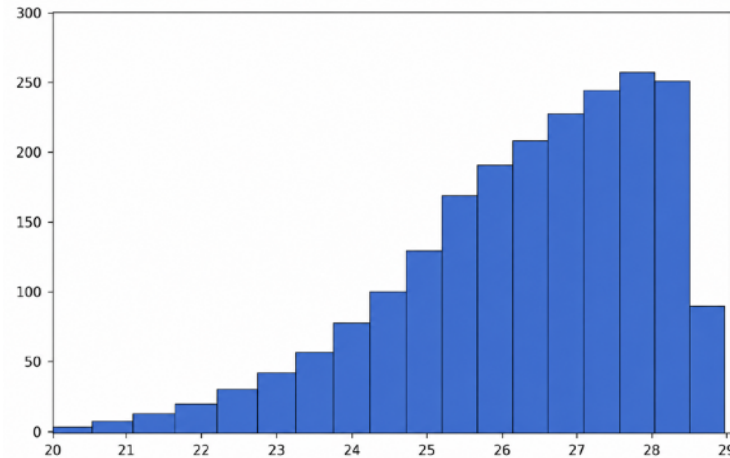
2.5 years => ~2300 candidates

$I_E \sim 28$ mag

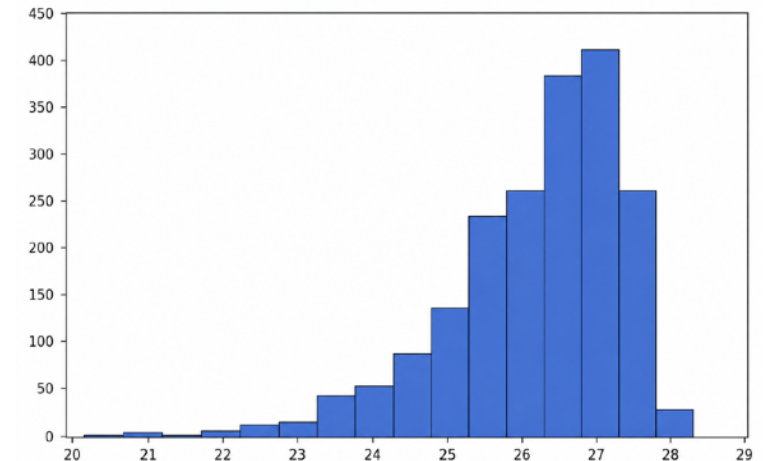
Type-Ia SNe up to $z \sim 1.5$

In agreement with
simulations performed
pre-launch

Simulations



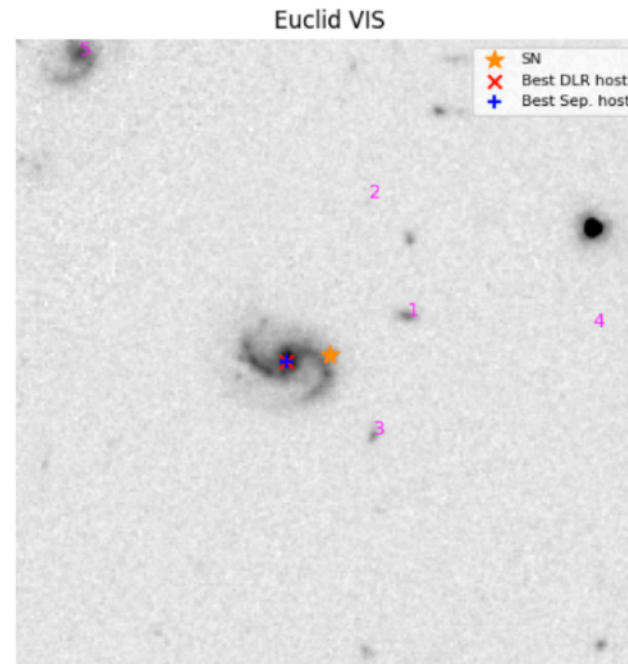
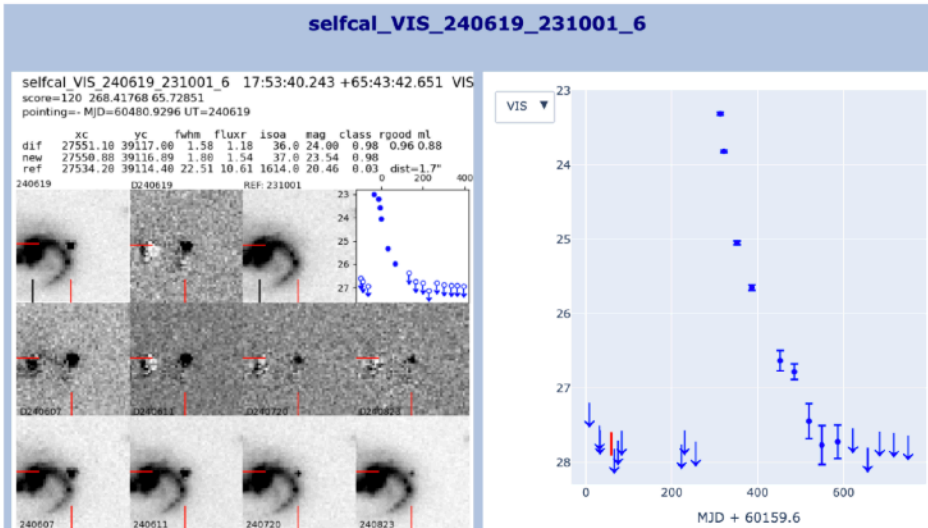
Observations



KP: Euclid transient search in the Self-Cal field

(Petrecca et al in prep)

DLR examples on Euclid data



--- Top 5 Host Candidates (sorted by scaled_DLR) ---

	right_ascension	declination	phz_median	sep_arcsec	scaled_DLR
8	268.4188	65.7284	0.52	1.6768	0.1623
16	268.4157	65.7289	0.69	3.3041	1.5043
2	268.4166	65.7302	1.37	6.1632	2.0496
23	268.4166	65.7277	1.05	3.5015	2.0944
7	268.4109	65.7288	1.18	10.0779	2.7974

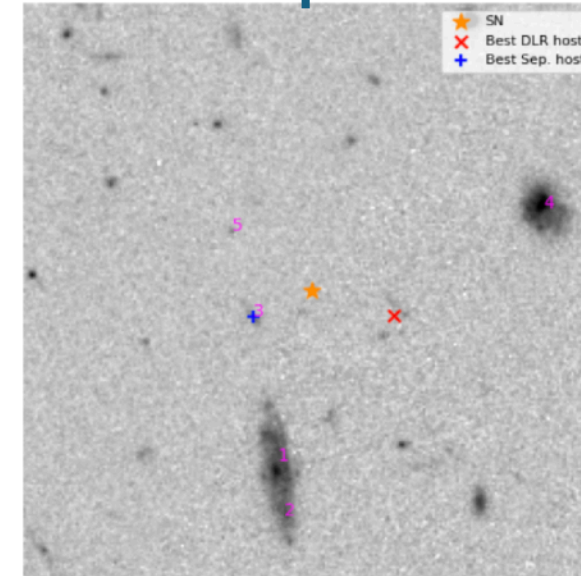
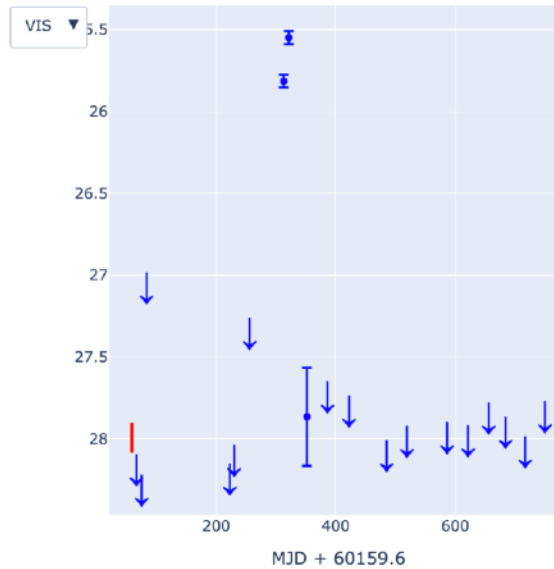
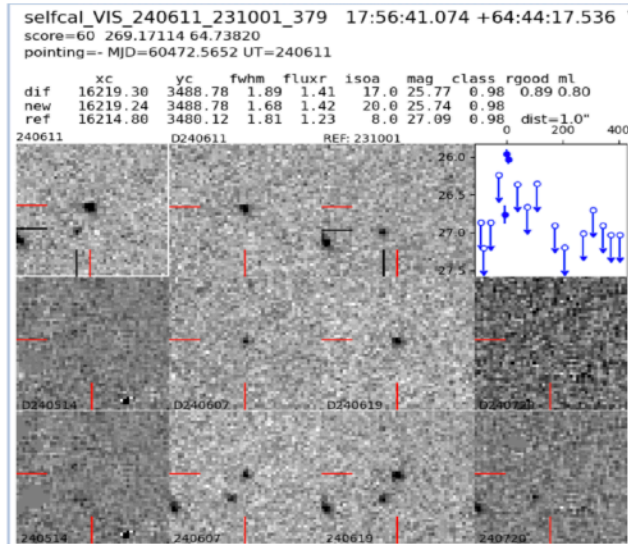
--- Top 5 Host Candidates (sorted by sep_arcsec) ---

	right_ascension	declination	phz_median	sep_arcsec	scaled_DLR
8	268.4188	65.7284	0.52	1.6768	0.1623
16	268.4157	65.7289	0.69	3.3041	1.5043
23	268.4166	65.7277	1.05	3.5015	2.0944
9	268.4156	65.7297	1.73	5.3856	3.4676
2	268.4166	65.7302	1.37	6.1632	2.0496

KP: Euclid transient search in the Self-Cal field

(Petrecca et al in prep)

DLR examples on Euclid data

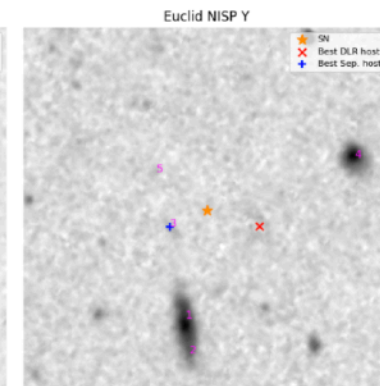
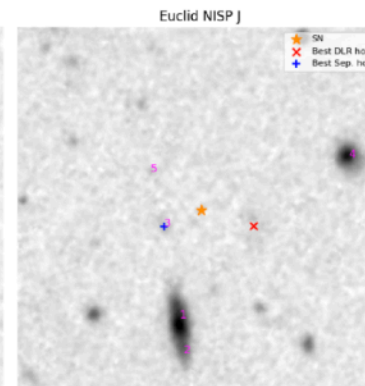
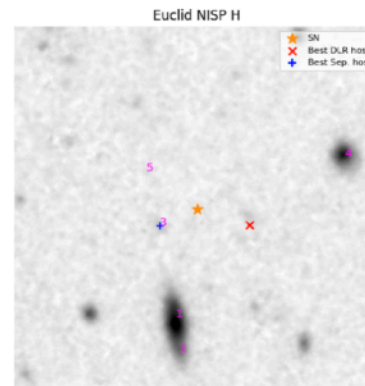


--- Top 5 Host Candidates (sorted by scaled_DLR) ---

	right_ascension	declination	phz_median	sep_arcsec	scaled_DLR
33	269.1689	64.7379	1.41	3.5625	0.6612
7	269.1721	64.7362	0.67	7.2779	1.0124
17	269.1719	64.7356	0.17	9.4888	2.0874
3	269.1727	64.7379	2.25	2.6835	2.1505
38	269.1649	64.7392	0.23	10.2613	2.2906

--- Top 5 Host Candidates (sorted by sep_arcsec) ---

	right_ascension	declination	phz_median	sep_arcsec	scaled_DLR
3	269.1727	64.7379	2.25	2.6835	2.1505
51	269.1692	64.7377	1.59	3.5596	3.6270
33	269.1689	64.7379	1.41	3.5625	0.6612
30	269.1688	64.7380	1.22	3.7232	3.6067
45	269.1733	64.7389	3.28	4.1556	2.6817





KP: Euclid transient search in the Self-Cal field

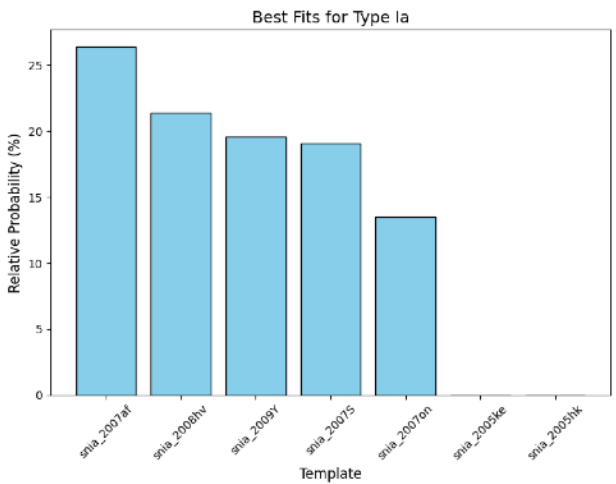
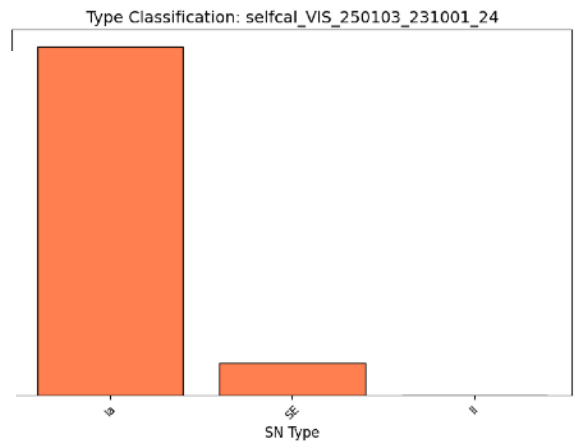
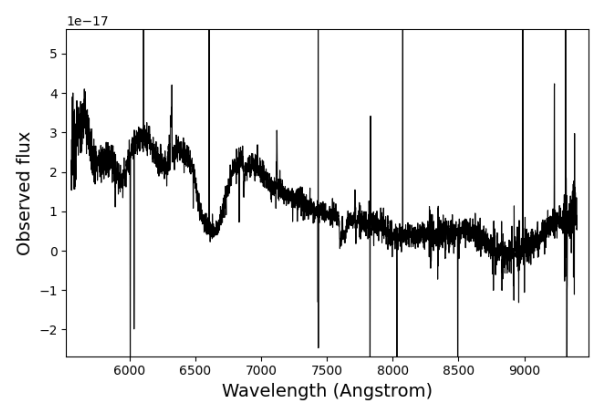
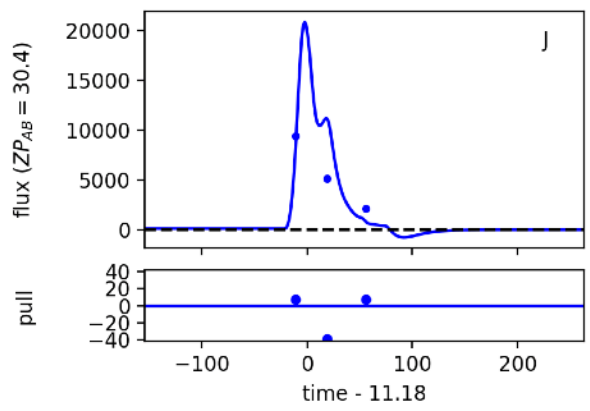
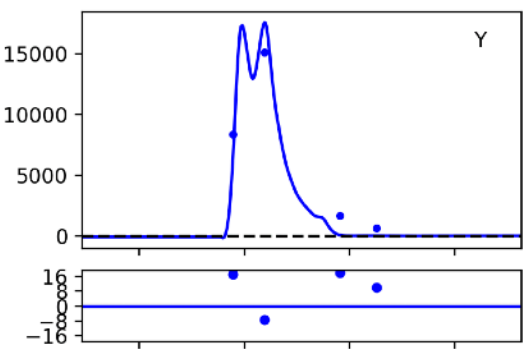
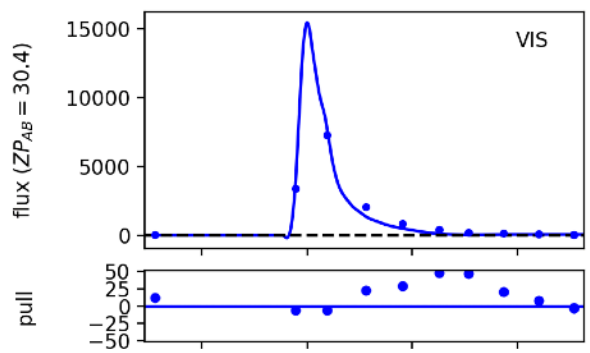
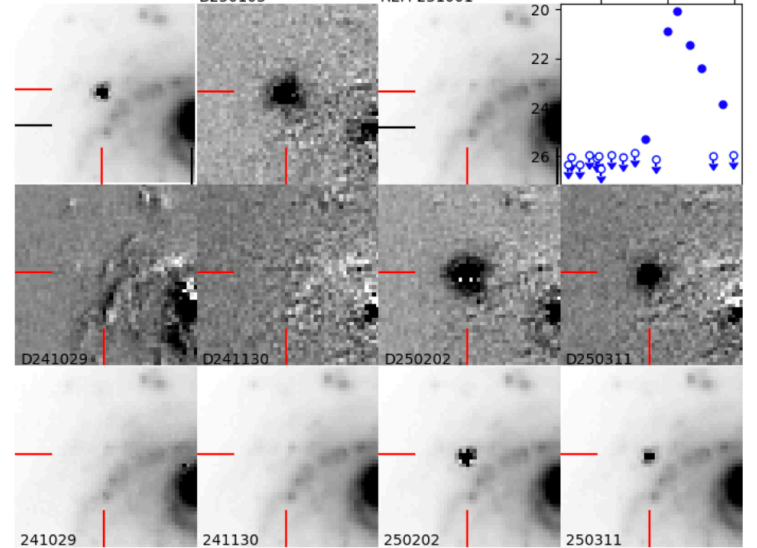
Photometric classification

$z = 0.087131743$
 $t_0 = 11.176436$

$A = 8.7974628 \times 10^{-4}$

selfcal_VIS_250103_231001_24 17:52:40.496 +65:39:53.126 V
 score=90 268.16873 65.66476
 pointing=- MJD=60678.8809 UT=250103

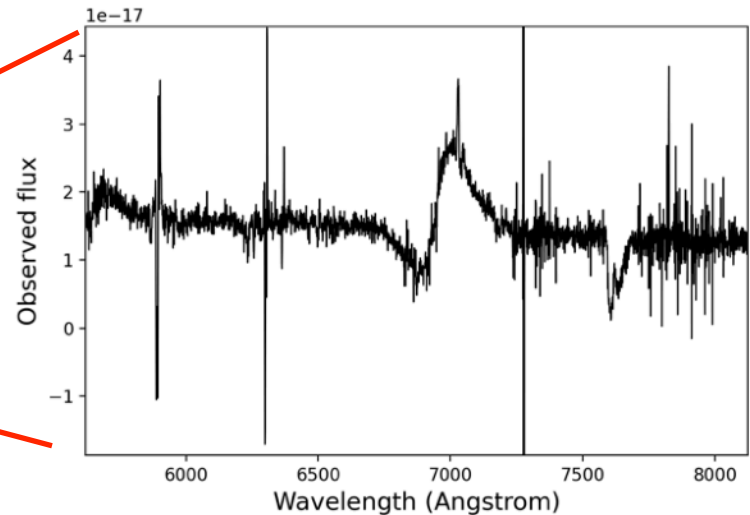
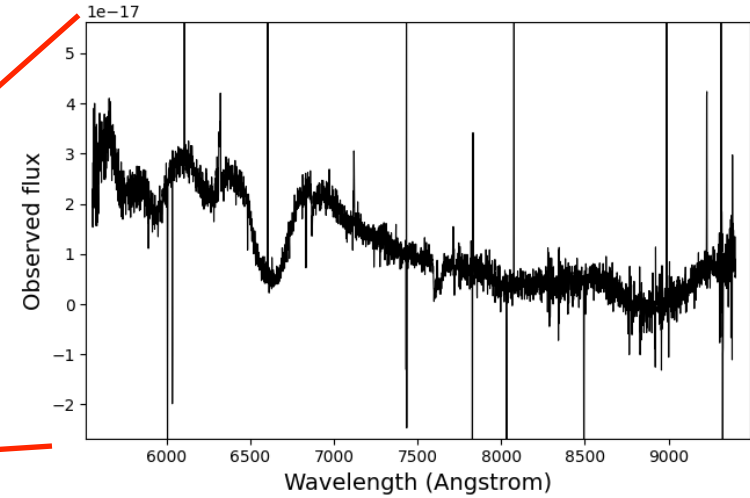
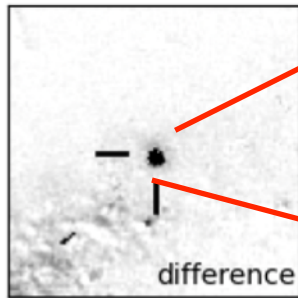
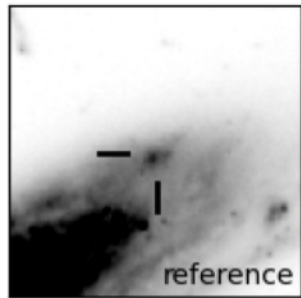
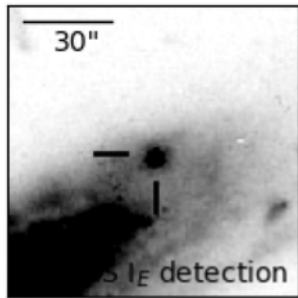
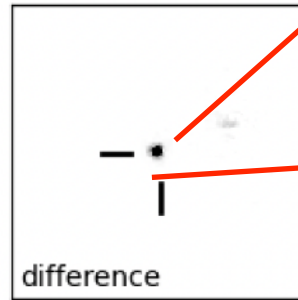
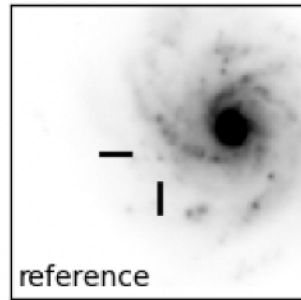
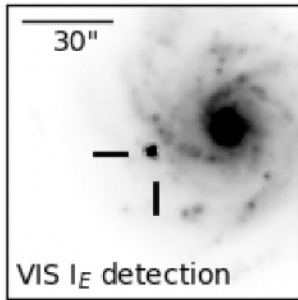
	xc	yc	fwhm	fluxr	isoa	mag	class	rgood	ml
dif	31256.00	36855.30	1.88	1.15	289.0	20.79	1.00	1.00	0.84
new	31255.97	36855.45	1.77	1.51	74.0	20.41	1.00		
ref	31280.70	36845.30	11.64	23.20	20324.0	16.60	0.03	dist=2.7"	



KP: Euclid transient search in the Self-Cal field

(Izzo et al in prep)

Spectroscopic follow-up



Towards DR1: Standard Projects

Gravitationally lensed transients

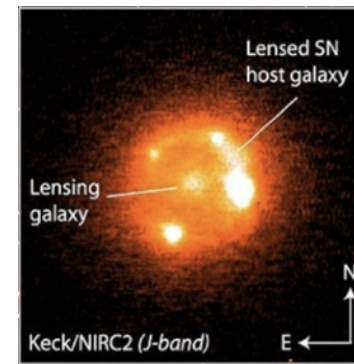
- Since August 2025, a joint LSST-Euclid project with common slack channel biweekly zoom meetings - Face to Face meeting in Garching end August 2025
- Euclid-LSST MoU on lensed transients finalizing, approval pending but needed before sharing data
- Lensed Transients project preparing for
 - Discovery
 - Follow-up (> 10 submitted in September to November)
 - Analysis
- Use SkyPortal on NERSC SPIN (and Lasair broker as a backup), with Euclid watchlists of lensed systems, fed by alerts from LSST FastDB for transient alerts, ZTF, LS4, etc...

<https://euclid-projects.org/projects/280/overview/>

<https://euclid.roe.ac.uk/projects/769/wiki>

Important astrophysical and cosmological probes

- measure distances and H_0 through SL time delays [Refsdal 1964]
 - constrain progenitors of SN
 - study high-z SN through lensing magnification
 - and more!
- [e.g., Suyu et al. 2024; Liao et al. 2022; Oguri 2019]



[Goobar et al. 2017]

Project common to SL-SWG & SNT-SWG

Leads: Sherry Suyu, Charling Tao

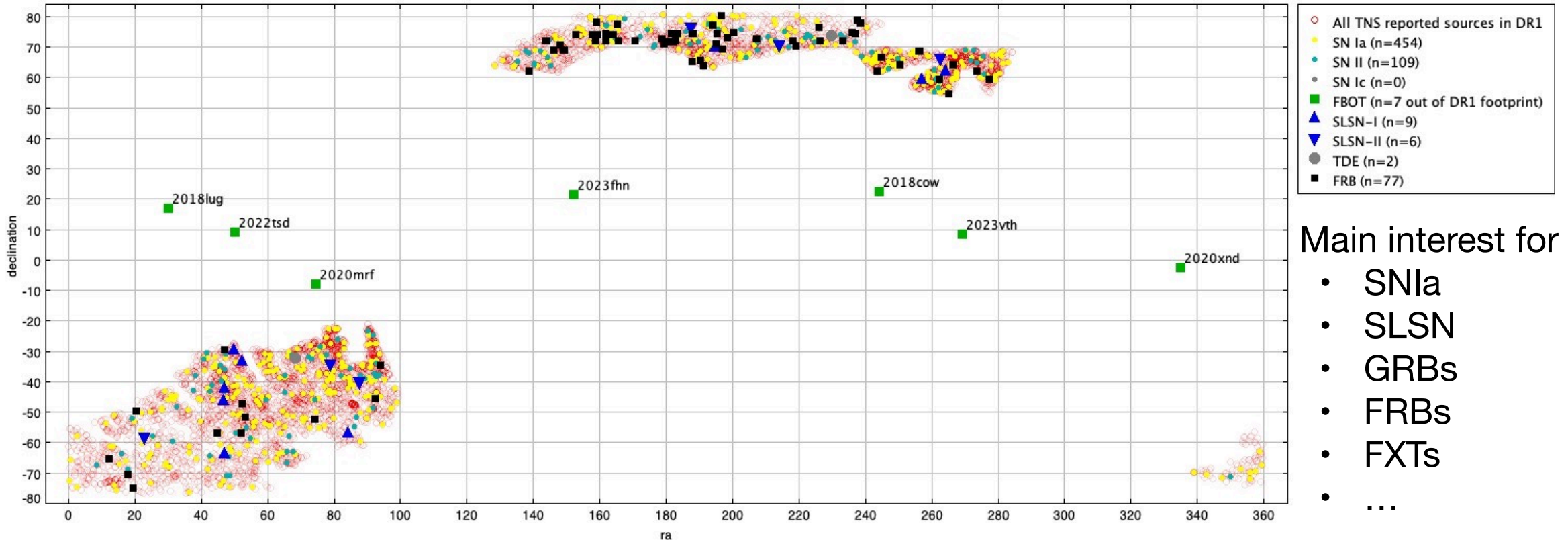
Towards DR1: Standard Projects

Host galaxies

Synergies with several WGs

Leads: Kerry Paterson & Isobel Hook

Study of host galaxies across different transient types



Main interest for DR1:

- SNIa
- SLSN
- GRBs
- FRBs
- FXTs
- ...

Towards DR1: Standard Projects

Host galaxies

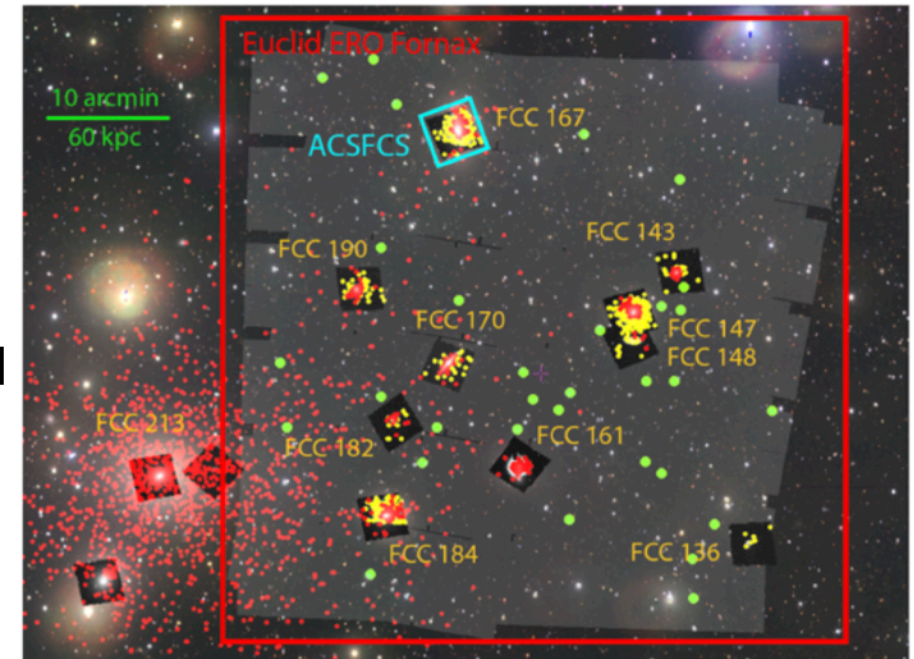
Synergies with several WGs

Leads: Kerry Paterson & Isobel Hook

Interest on galaxy properties and implications on transients

Galaxies:

- Global properties
- Local properties to transients location
- Search for underlying faint hosts or globular clusters
- Comparing Euclid parameters with non-parametric SFH studies for higher resolution details on parameters
 - Rerunning parameters with additional external data such as spec z



EROs search for GC (Saifollahi et al. 2025)

Towards DR1: Standard Projects

Host galaxies

Synergies with several WGs

Leads: Kerry Paterson & Isobel Hook

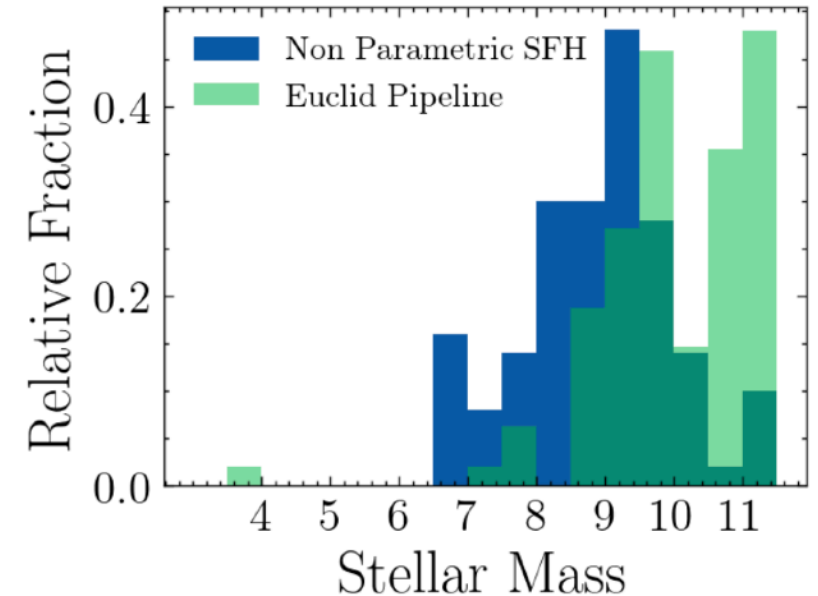
Interest on galaxy properties and implications on transients

Galaxies:

- Global properties
- Local properties to transients location
- Search for underlying faint hosts or globular clusters
- Comparing Euclid parameters with non-parametric SFH

studies for higher resolution details on parameters

- Rerunning parameters with additional external data such as spec z



Improving resolution on parameters using computational intense code on host galaxies

Towards DR1: Standard Projects

Host galaxies

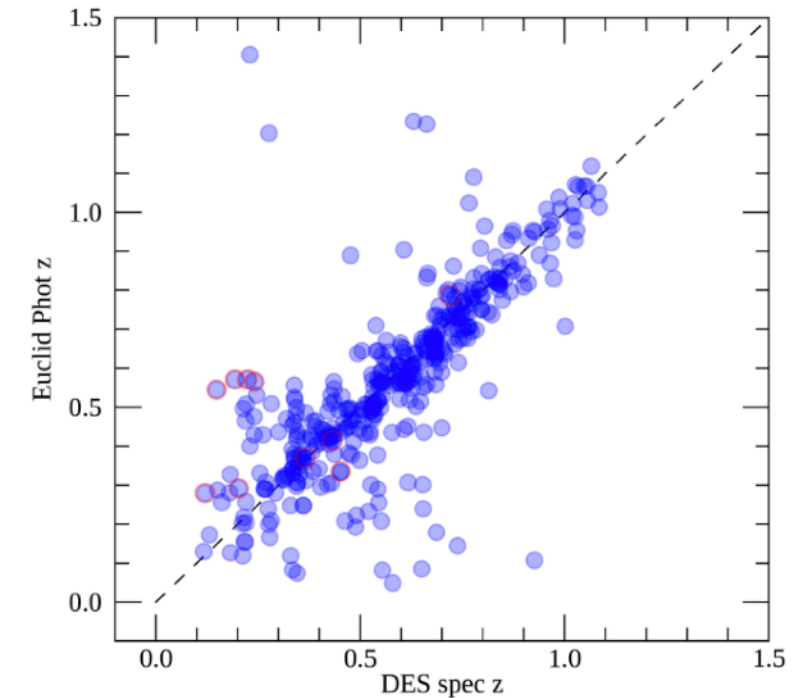
Synergies with several WGs

Leads: Kerry Paterson & Isobel Hook

Interest on galaxy properties and implications on transients

Galaxies:

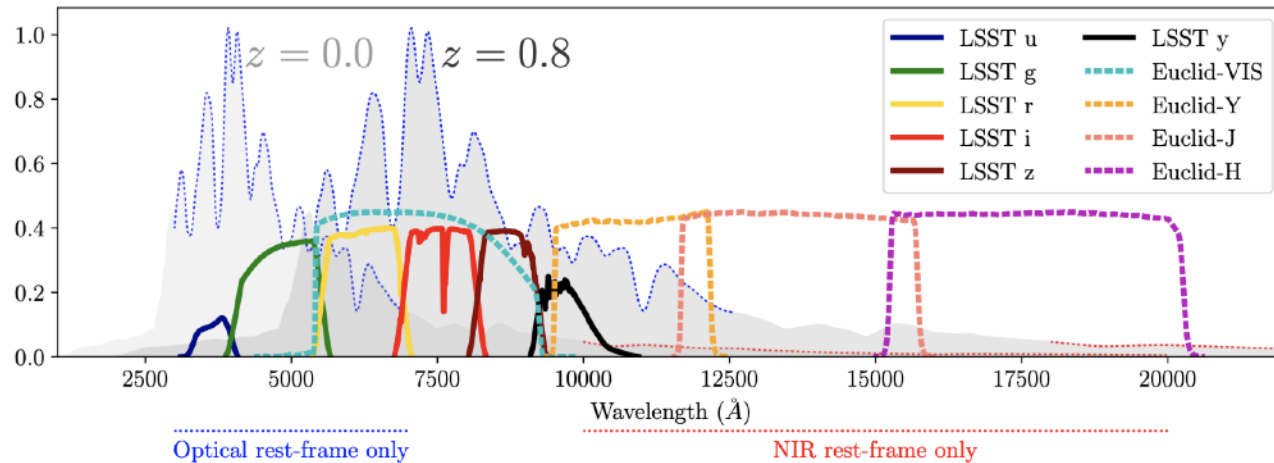
- Global properties
- Local properties to transients location
- Search for underlying faint hosts or globular clusters
- Comparing Euclid parameters with non-parametric SFH studies for higher resolution details on parameters
 - Rerunning parameters with additional external data such as spec z



Comparing Euclid z to other surveys for SNIa

After DR1: Rubin-Euclid and more

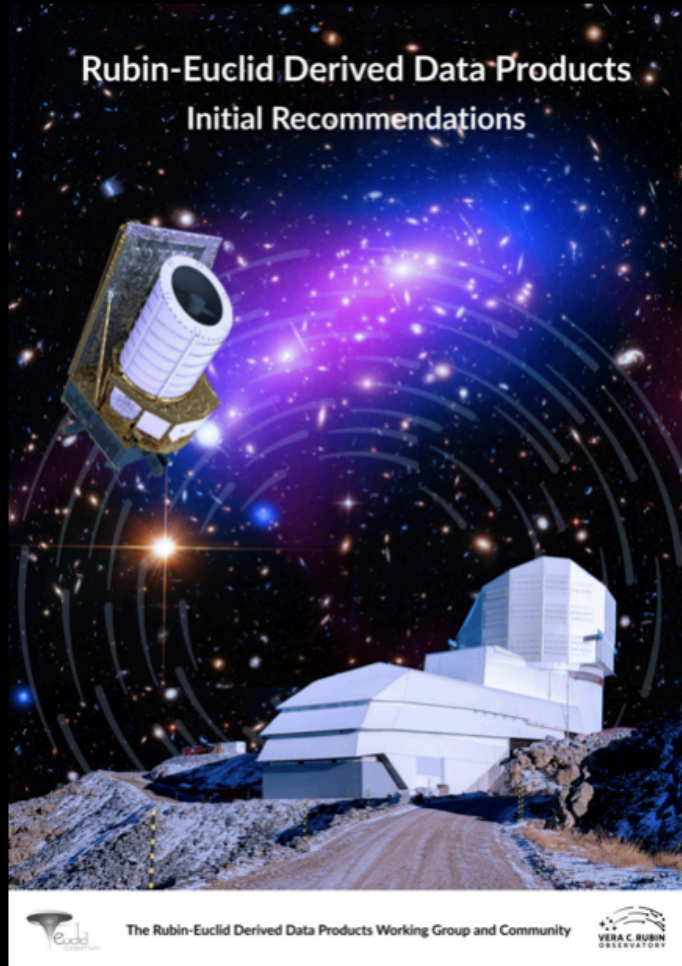
Transient science can be enabled by coupling Rubin-LSST and Euclid survey



Complementing low- and medium- z transient Universe

- SN rate evolution as a function of redshift, galaxy mass, SFR
- SN Ia cosmology in the NIR range
- Nuclear Transients
- Gravitationally lensed transients
- High redshift long-lasting transients (SLSNe, PISNe...)
- Dust extinction bias for transient search

Euclid - Rubin joint transient science with DR2 and DR3 data



<https://arxiv.org/abs/2201.03862>

Broad scientific impact of

joint transient light curves in the optical and NIR
high quality photometry
photometric redshift of host galaxies

Transients (TR)

DDPs for transients

DDP-25-TR	B P1+U1+RT	T0	Transient object light-curves
DDP-26-TR	B P1+U1+RT	T0	Transient object cutouts
DDP-27-TR	B P2+U1+RT	T0	Transient astrometry
DDP-28-TR	B P1+U1+YR	T1	Transient host galaxy photometry
DDP-29-TR	B P1+U1+RT	T0	Transient host galaxy redshifts
DDP-30-TR	B P2+U2+YR	T2	Transient host spectral parameters
DDP-31-TR	B P1+U1+RT	T0	Joint transient lightcurve parameters
DDP-32-TR	B P1+U1+RT	T0	Transient redshifts
DDP-33-TR	B P1+U1+YR	T1	Joint transient host parameters
DDP-34-TR	B P1+U1+RT	T0	Joint transient database and interface
DDP-35-TR	B P1+U1+DR	T2	Transient detection efficiencies



Rubin-Euclid Derived Data Products Forum

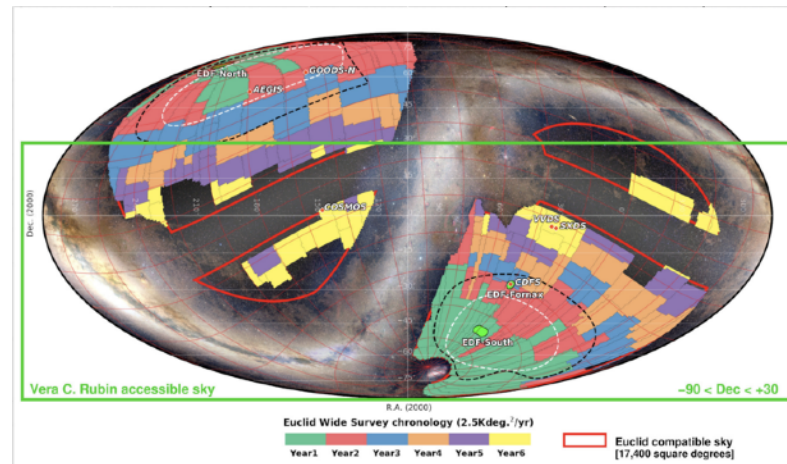


After DR1: Rubin-Euclid and more

Pave the way for simultaneous Rubin-Euclid observations - DR2 and DR3

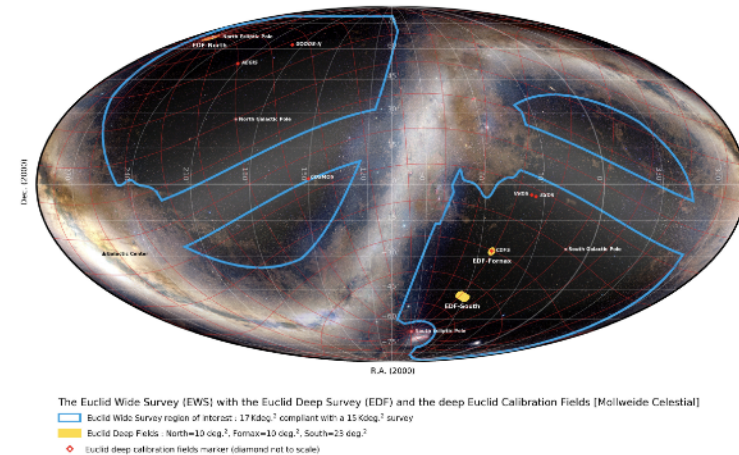
2 main projects

Euclid-Rubin joint light curves and cutouts

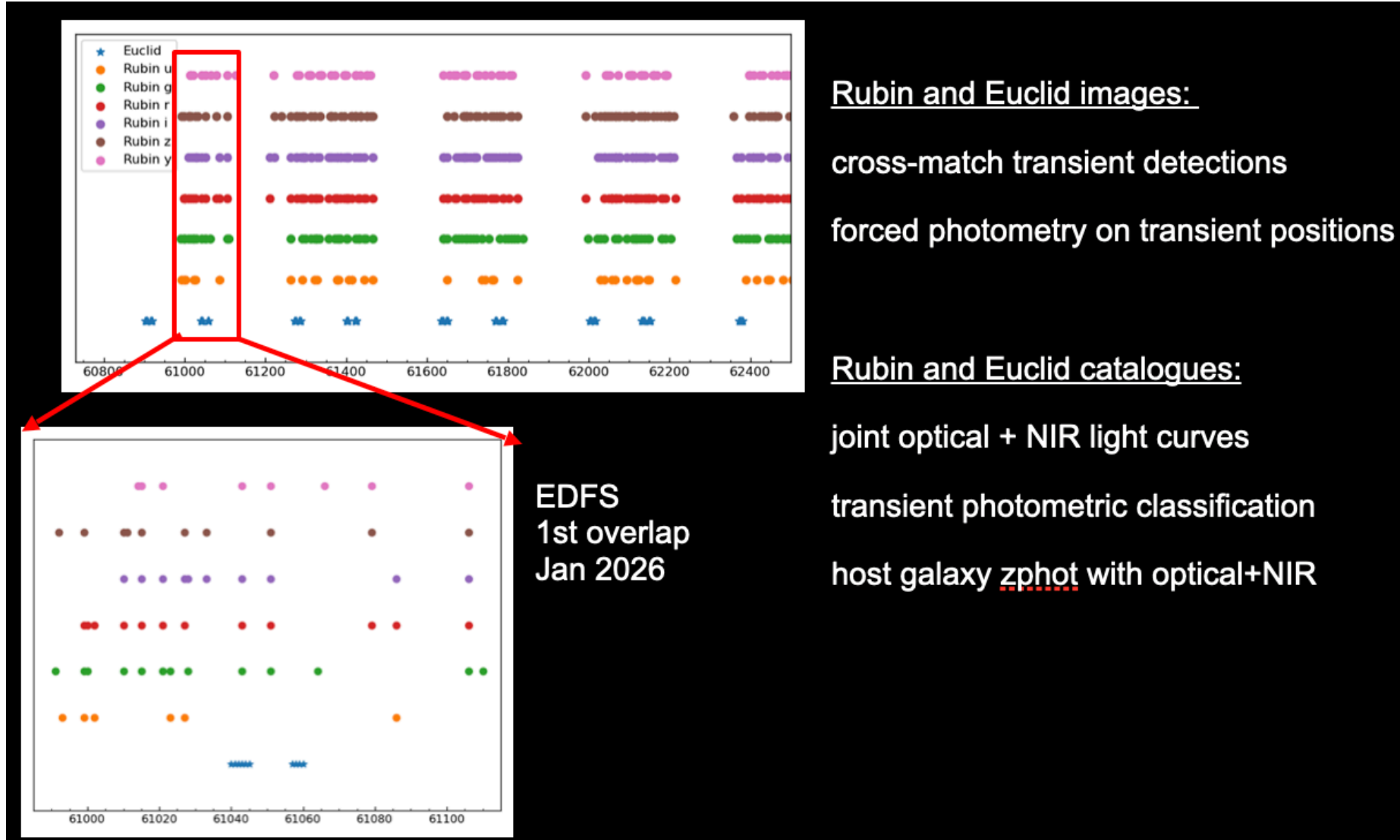


exploiting the spatial overlap of the two wide surveys
~9400 deg²

Euclid-Rubin simultaneous transient search



exploiting the temporal overlap on deep fields
for several seasons ~30 deg²



Rubin and Euclid images:

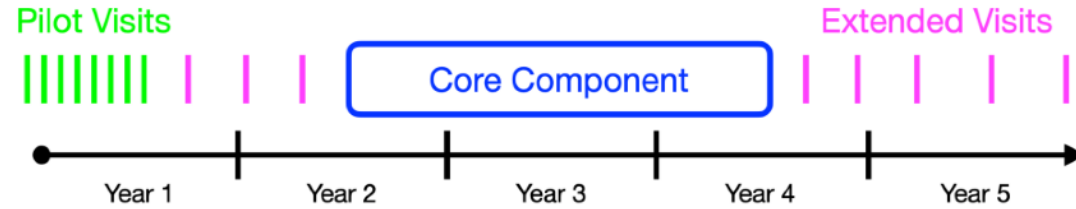
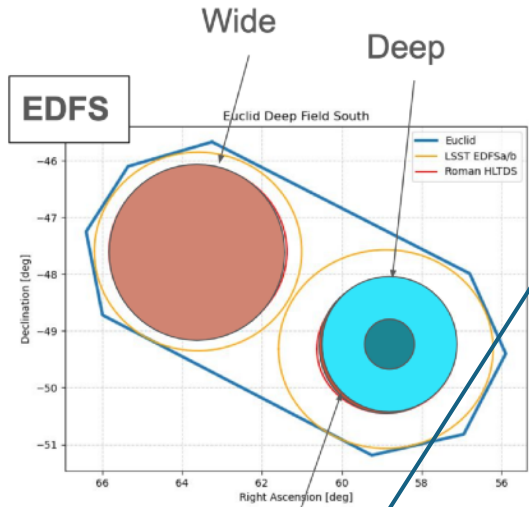
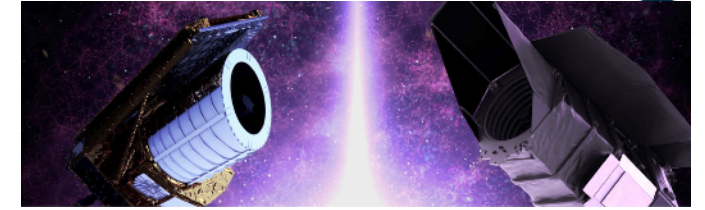
- cross-match transient detections
- forced photometry on transient positions

Rubin and Euclid catalogues:

- joint optical + NIR light curves
- transient photometric classification
- host galaxy zphot with optical+NIR

EDFS
1st overlap
Jan 2026

After DR1: Roman-Euclid synergy



Pilot Component

Takes place before Core Component, early in mission.

Objective:

- Template images for DIA
- Reference prism data
- Measure SNe Ia rate

8 observations every 20 days.

Total allocation: 15 days

Core Component

Wide Imaging Tier (7.59 deg²):
RZYJH filters, ~10-day cadence.

Deep Imaging Tier (4.5 deg²):
ZYJHF filters ~10-day cadence

Spectroscopy Tiers:

Wide tier covering 4.5 deg² t_{exp} 900 sec
Deep tier 0.56 deg² t_{exp} 3600 sec,
with a ~5 day cadence.
to provide redshifts/classification.

Extended Component

Extends coverage over entire 5-yr mission

Objective:

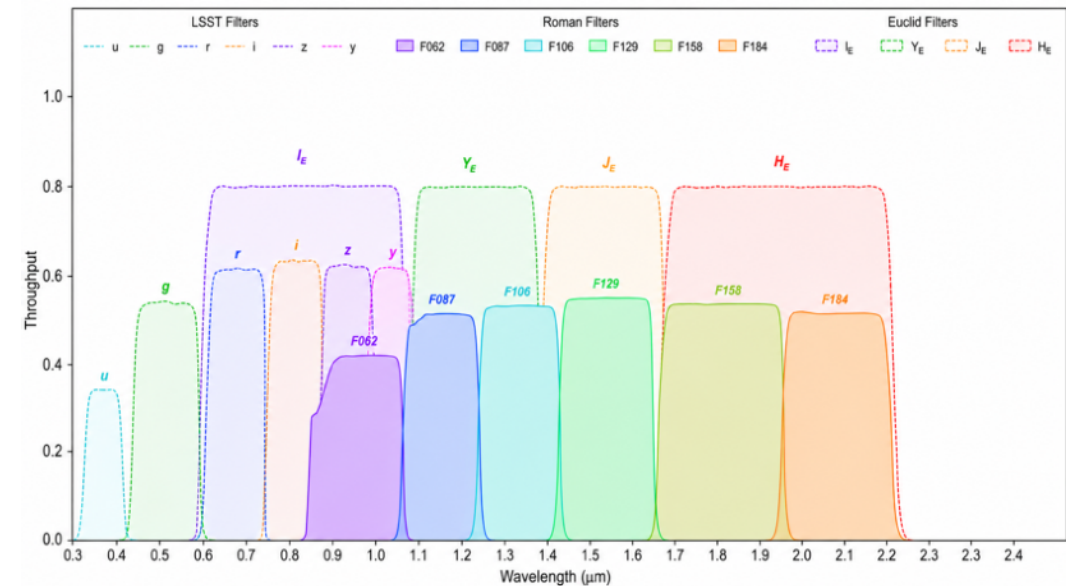
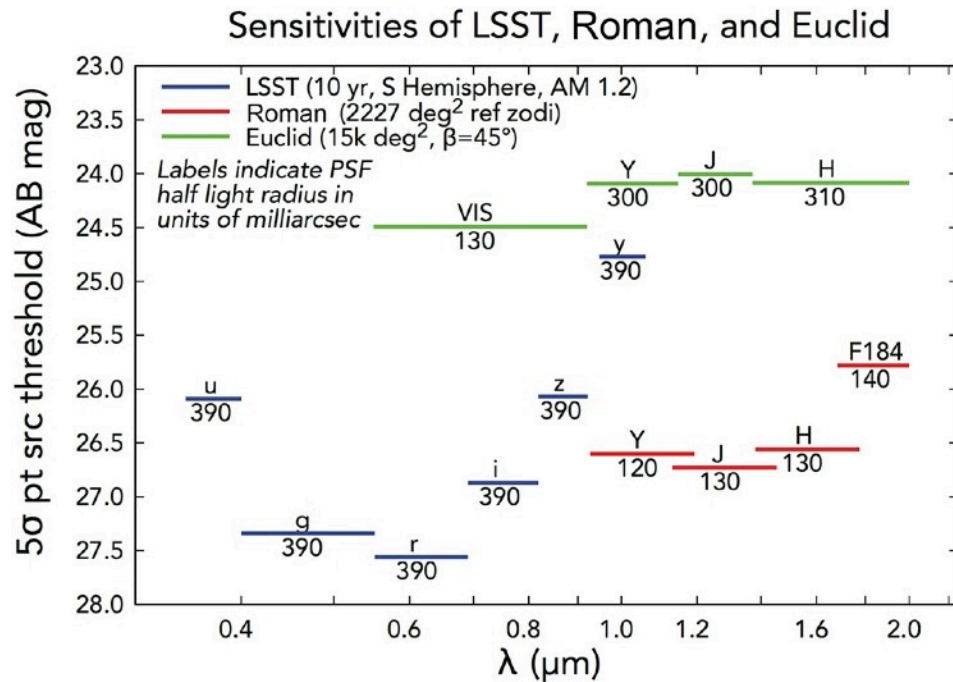
Discover high-z super-luminous SNe possibly to $z \sim 5$.

8 observations in gaps and after Core with a 120-day cadence.

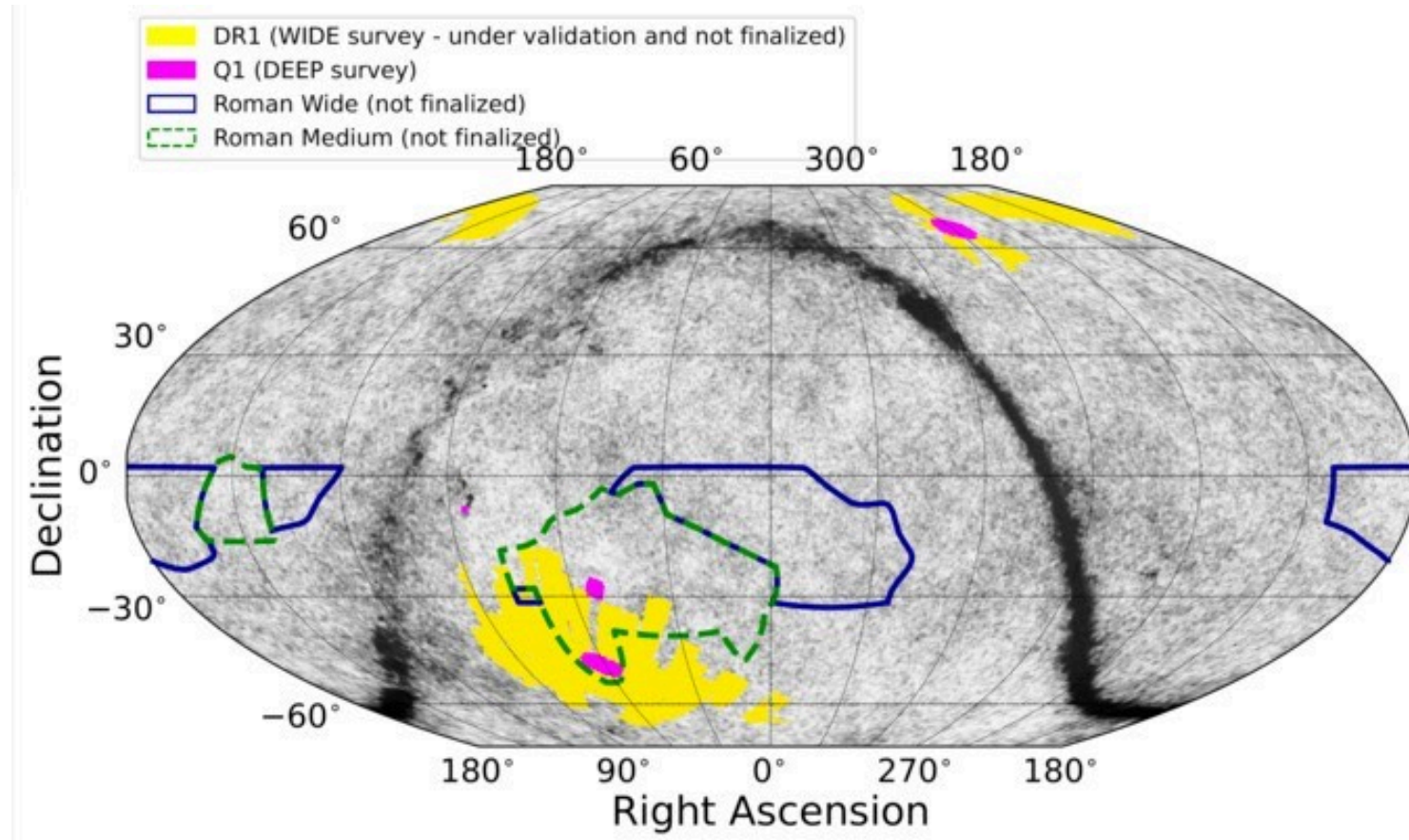
Total allocation: 7 days.

After DR1: Roman-Euclid synergy

- Comparable sensitivity
- Complementary wavelength range



After DR1: Roman-Euclid synergy



- A unique opportunity for time-domain astrophysics



Conclusions

Euclid is highly valuable for time-domain science

- high sensitivity and angular resolution of VIS
- simultaneous VIS+NIR imaging capability

Several science cases and standard projects

- on both Wide and Deep Survey data
- sharing tools, methodologies, and collaborations across SWGs

DR1 Key project: a transient search on SELF CAL images

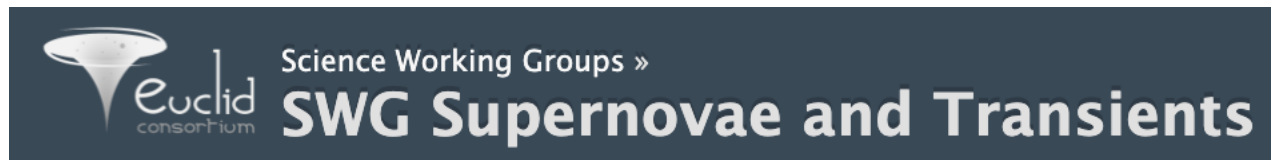
- pipeline for Le1 data reduction, difference image analysis and database
- ~2000 SN candidates up to $z \sim 1.5$ for new measurements of rates!

Critical synergies with Rubin and Roman surveys

- The coordinated monitoring with the Vera C. Rubin Observatory and the Nancy G. Roman Space Telescope represents a major opportunity for transient science.

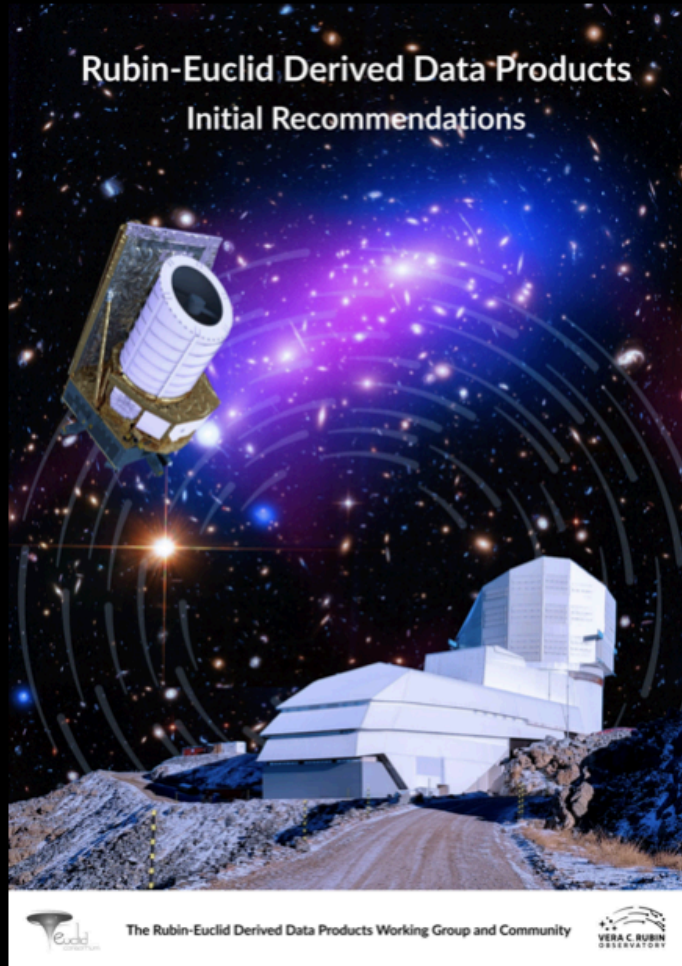
Joint efforts will be essential to fully exploit these synergies!

Thank you for the attention



<https://euclid.roe.ac.uk/projects/stswg>

Euclid - Rubin joint transient science with DR2 and DR3 data



<https://arxiv.org/abs/2201.03862>

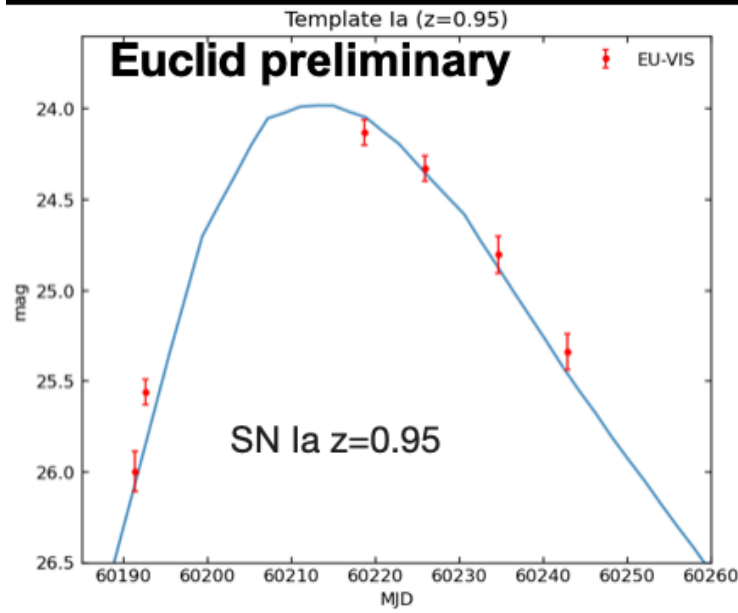
Broad scientific impact of

joint transient light curves in the optical and NIR
 high quality photometry
 photometric redshift of host galaxies

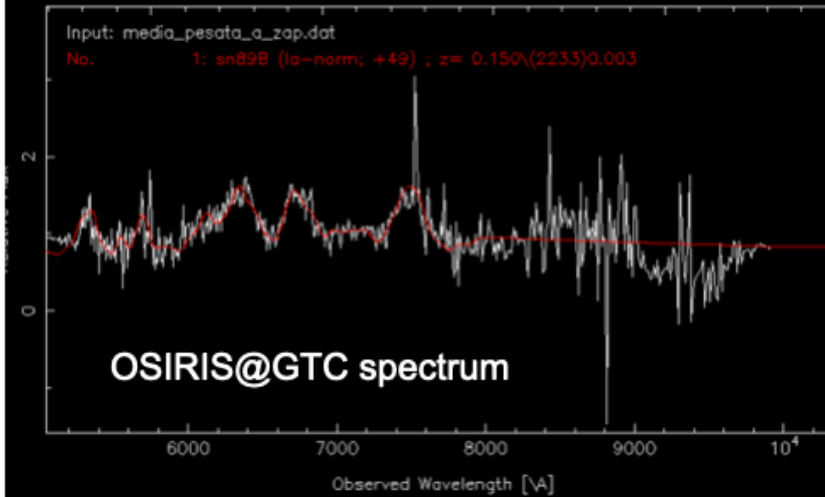
Transients (TR)

DDPs for transients

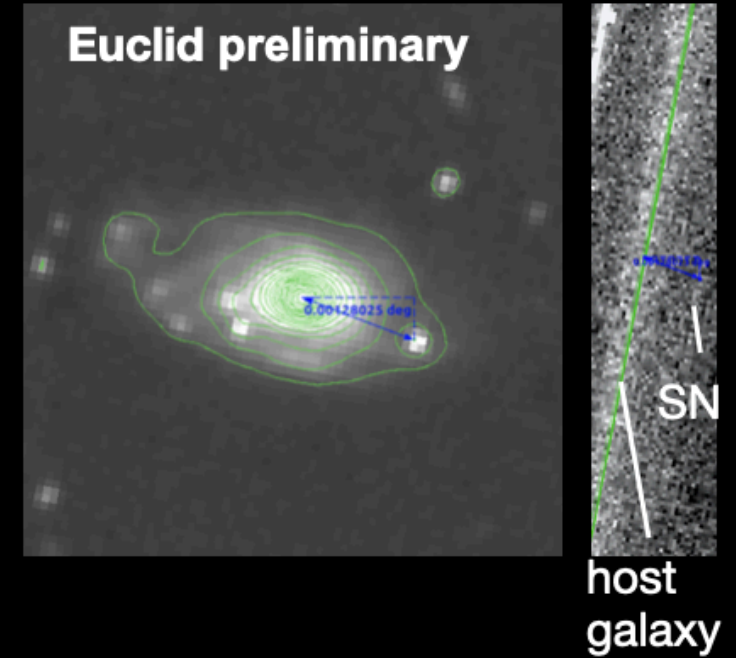
DDP-25-TR	B P1+U1+RT	T0	Transient object light-curves
DDP-26-TR	B P1+U1+RT	T0	Transient object cutouts
DDP-27-TR	B P2+U1+RT	T0	Transient astrometry
DDP-28-TR	B P1+U1+YR	T1	Transient host galaxy photometry
DDP-29-TR	B P1+U1+RT	T0	Transient host galaxy redshifts
DDP-30-TR	B P2+U2+YR	T2	Transient host spectral parameters
DDP-31-TR	B P1+U1+RT	T0	Joint transient lightcurve parameters
DDP-32-TR	B P1+U1+RT	T0	Transient redshifts
DDP-33-TR	B P1+U1+YR	T1	Joint transient host parameters
DDP-34-TR	B P1+U1+RT	T0	Joint transient database and interface
DDP-35-TR	B P1+U1+DR	T2	Transient detection efficiencies



photometric classification
by fitting light curves



spectroscopic follow up
for brightest transients
LBT, Subaru, GCT, ESO-VLT, TNG



zphot from MER catalogues
zspec from NISP spectrum
for brightest galaxies

INAF TOCats – HiPS catalogues browser, V. 2.1 – *Developed using DIF and Aladin Lite v3*

267.58 65 Where DB Table: candidates – 0.01188 objs/deg² > Upload

J2000 Fov: 58.33° SIN

1,209 objects in the field

Candidates

Base image layer quick selection

Overlay Euclid VIS Opacity 100 %

Ref. Cat. Candidates Options

Show entries Search:

RA	Dec	MagAUTO	Sep
267.575833	65.084849	21.4661	5.092
268.074013	65.560026	21.6761	35.815
269.453586	65.289201	22.3568	50.334
269.265011	65.162954	22.3724	43.703
268.878346	65.726994	22.4317	54.378
269.704701	65.285382	22.4988	56.254
269.182945	65.144618	22.5289	41.453
269.388001	65.145174	22.5557	46.542
269.144051	65.733501	22.6897	58.876
267.840673	65.727871	22.7962	44.156

Showing 1 to 10 of 1,209 entries

Previous 2 3 4 5 ... 121 Next

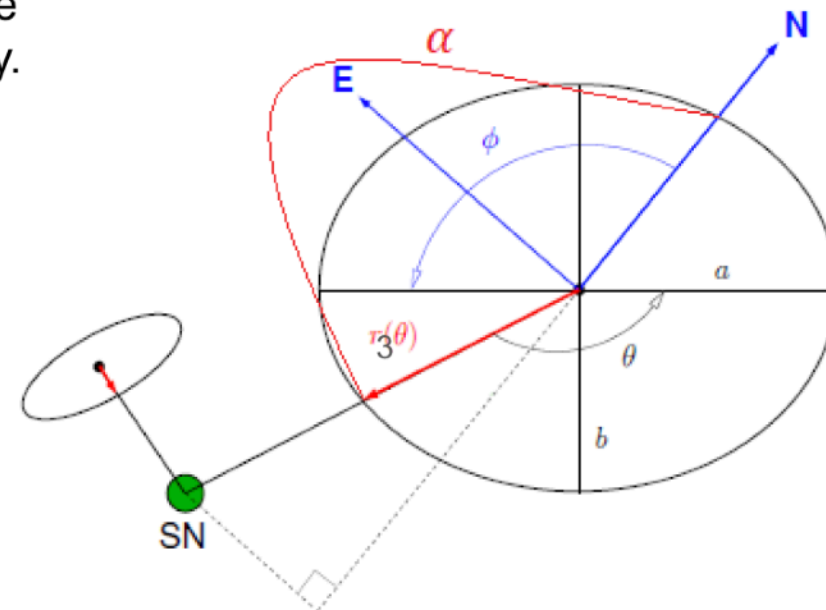
- For each SN candidate, we retrieve all the objects within 30".
- We assume the isophotes of the galaxy are self-similar ellipses and get the Stokes parameters Q and U from the adaptive second moments of source intensity I_{xx}, I_{yy}, I_{xy} . Then, we derive the position angle φ and the axis ratio a/b of the galaxy:

$$Q = I_{xx} - I_{yy} \quad U = I_{xy} \quad \varphi = \frac{1}{2} \arctan\left(\frac{U}{Q}\right) \quad k \equiv Q^2 + U^2 = \left(\frac{a-b}{a+b}\right)^2 \rightarrow \frac{a}{b} = \frac{1+k+2\sqrt{k}}{1-k}$$

- We measure the position angle α of the SN relative to the candidate host galaxy and get the angle θ from geometry.
- The equation of an ellipse in polar coordinates with origin at the center is:

$$r(\theta) = \frac{a}{\sqrt{\left(\frac{a}{b} \sin \theta\right)^2 + (\cos \theta)^2}} \quad \text{where we use } a = r_{Kron}$$

- We define $r(\theta)$ as the Directional Light Radius *DLR* and normalize the angular distances by it.



The MER catalogues come in three flavours :

- **mer_catalogue**: primary catalogue derived from merged mosaics containing ~30 million objects with positions, fluxes (VIS, NIR, EXT), colours, and some object characterisation parameters such as size and shape measurements. Each object has a unique object_id, which is used in other PHZ and SPE catalogues.
- **mer_morphology_catalogue**: morphological information.
- **mer_cutout_catalogue**: information of the area analyses for each object.

Specific information about the various MER photometry measurements and their usage can be found in the [MER photometry cookbook](#).

The PHZ (photo-z) catalogues come in two different sets of catalogues:

- Catalogues for weak-lensing:
 - **pho_photo_z**: photometric redshift catalogue
 - **phz_star_sed**: star spectral energy distribution (SED) catalogue
 - **phz_galaxy_sed**: galaxy SED catalogue
- Catalogues for level-3 input (and legacy science):
 - **phz_classification**: classification catalogue
 - **phz_physical_parameters**: physical parameters catalogue
 - **phz_qso_physical_parameters**: QSO physical parameters catalogue
 - **phz_nir_physical_parameters**: NIR physical parameters catalogue
 - **phz_star_template**: star template

The SPE (spectroscopy) catalogues:

- Redshift catalogues:
 - **spectro_zcatalog_spe_quality**: quality flags
 - **spectro_zcatalog_spe_classification**: classification information for processed spectra
 - **spectro_zcatalog_spe_galaxy_candidates**: galaxy candidates catalogue, with up to 5 redshift candidates per galaxy
 - **spectro_zcatalog_spe_star_candidates**: star candidates catalogue, with the relative line-of-sight velocity for each star
 - **spectro_zcatalog_spe_qso_candidates**: QSO candidates catalogue, with up to 5 redshift candidates per QSO candidate

Job name: Q1_hosts_selfcal_with_p

```

1 SELECT
2   cat.object_id, cat.right_ascension, cat.declination, cat.segmentation_map_id,
3   cat.vis_det, cat.flux_vis_psf, cat.fluxerr_vis_psf, cat.flux_detection_total,
4   cat.fluxerr_detection_total, cat.flux_vis_sersic, cat.flux_y_sersic,
5   cat.flux_j_sersic, cat.flux_h_sersic, cat.flag_vis, cat.flag_y, cat.flag_j,
6   cat.flag_h, cat.variable_flag, cat.extended_flag, cat.extended_prob,
7   cat.det_quality_flag, cat.segmentation_area, cat.semimajor_axis,
8   cat.semimajor_axis_err, cat.position_angle, cat.ellipticity,
9   cat.ellipticity_err, cat.kron_radius, cat.kron_radius_err,
10  morph.sersic_angle, morph.sersic_angle_err, morph.moment_20,
11  morph.moment_20_err, morph.concentration, morph.concentration_err,
12  phz.phz_median, phz_classification
13 FROM
14  catalogue.mer_catalogue AS cat
15 JOIN
16  catalogue.mer_morphology AS morph
17 ON
18  cat.object_id = morph.object_id
19 JOIN
20  catalogue.phz_photo_z AS phz
21 ON
22  cat.object_id = phz.object_id
23 WHERE
24  CONTAINS(
25   POINT('ICRS', cat.right_ascension, cat.declination),
26   CIRCLE('ICRS', 268.8, 65.2, 4)
27  ) = 1
    
```

I get a/b from -> $e=1-b/a$
Position angle



Towards DR1: Rubin-Euclid and more

(Petrecca et al in prep)

Photometric follow-up

VESTA: **V**ST-**E**uclid **S**ynergies for
Time-domain **A**stronomy

Wide-field camera (1 square degree FoV)

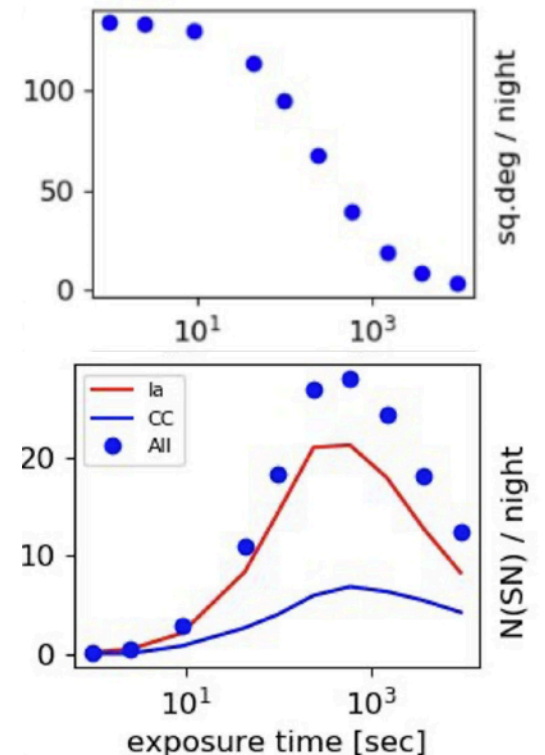
Excellent image quality and depth

Same pixel scale of LSST (0.2 arcseconds)

Very similar photometric system of LSST

Location (Cerro Paranal) close to LSST (Cerro Pachón)

Great experience with transient surveys (SUDARE)

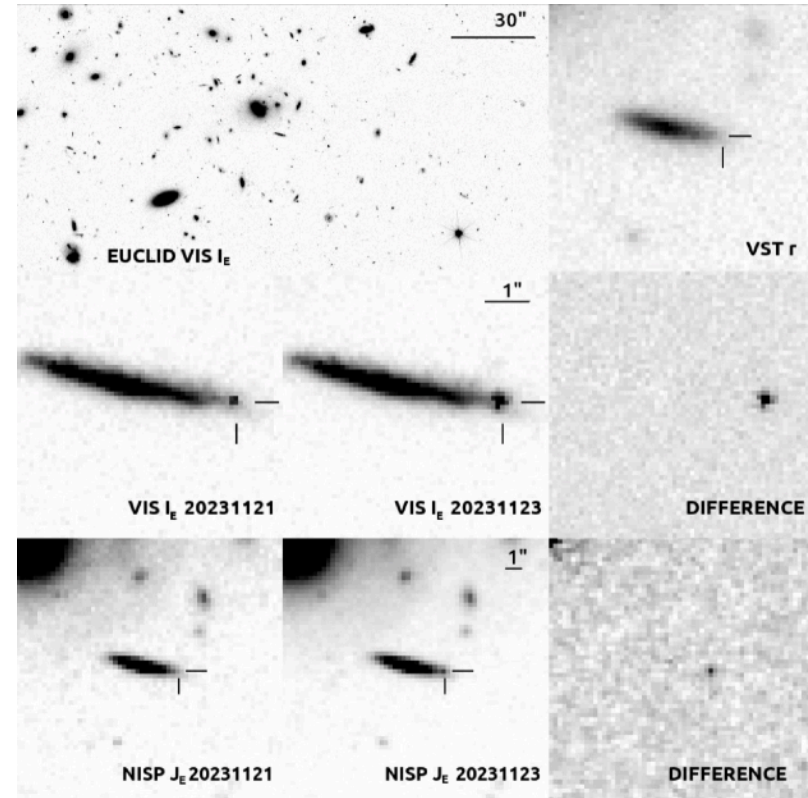
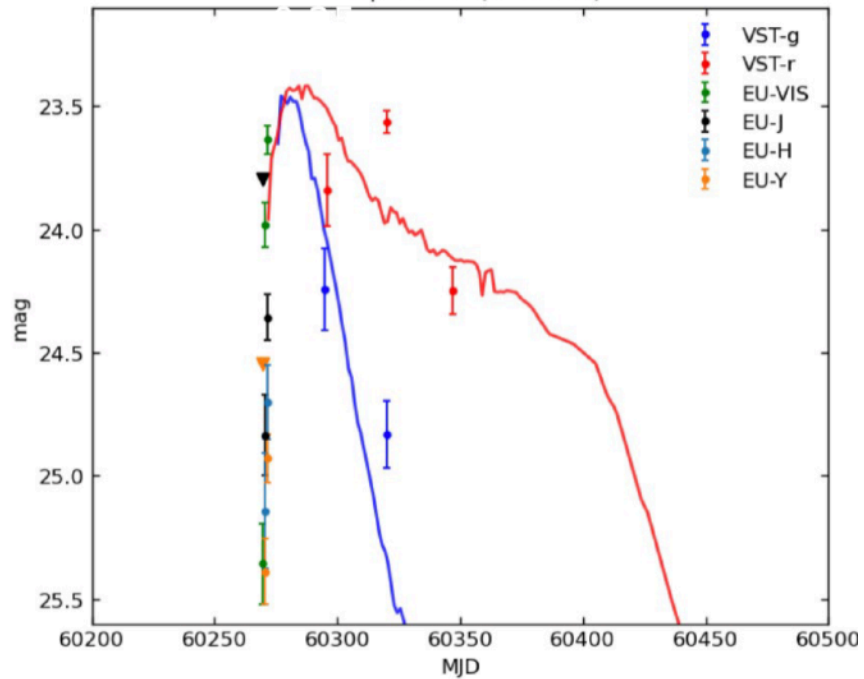


Towards DR1: Rubin-Euclid and more

(Petrecca et al in prep)

Photometric follow-up

VESTA: VST-Euclid Synergies for Time-domain Astronomy

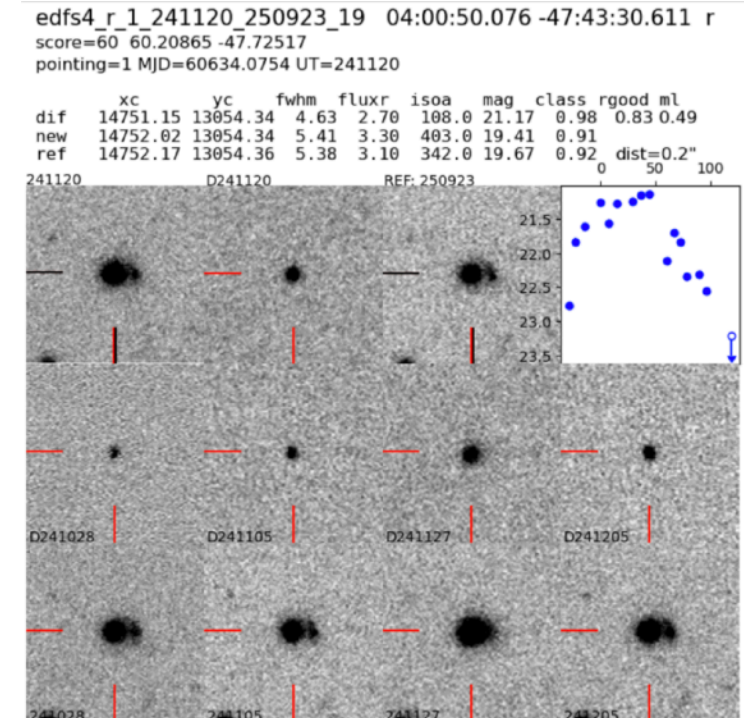
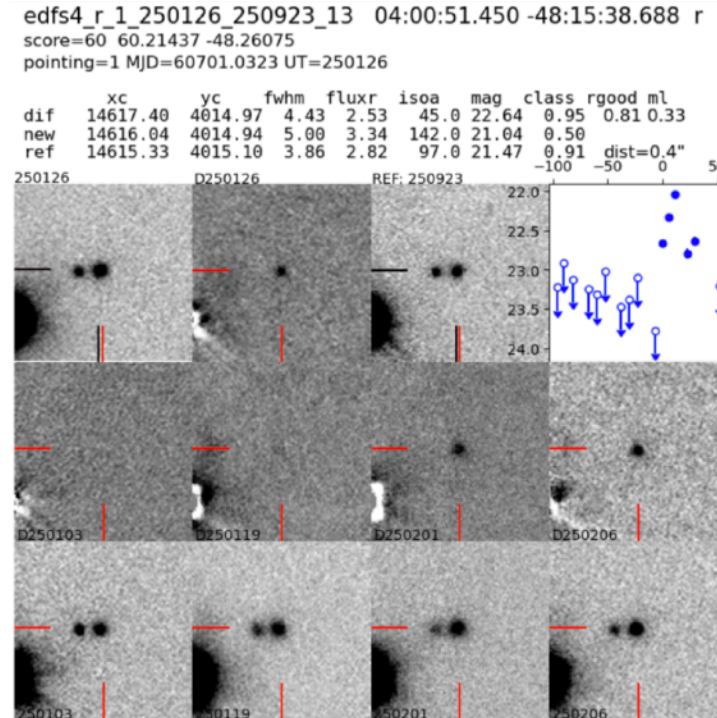
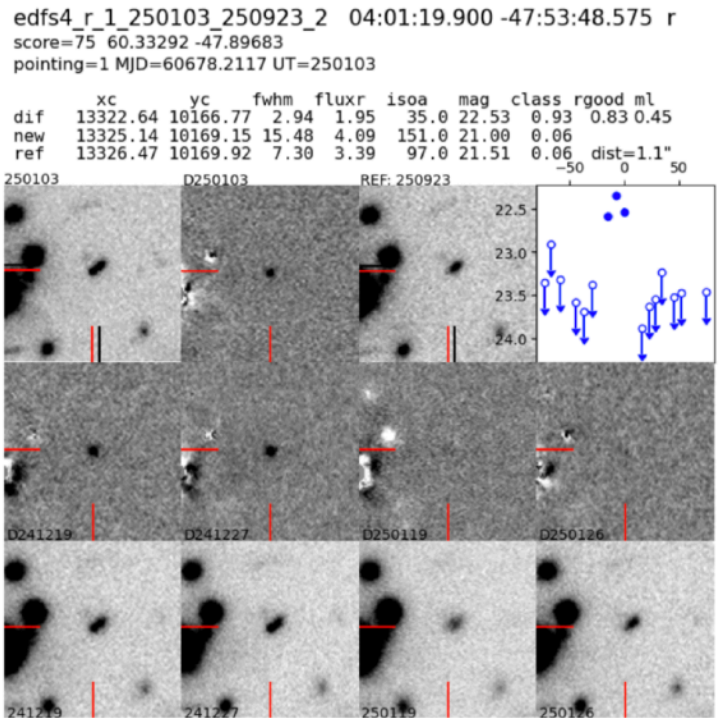


Towards DR1: Rubin-Euclid and more

(Petrecca et al in prep)

First results - candidates

VESTA: VST-Euclid Synergies for Time-domain Astronomy





Photometric classification

Current status

Template construction on-going



Host galaxy from DLR code



Need more spectra (currently 6)

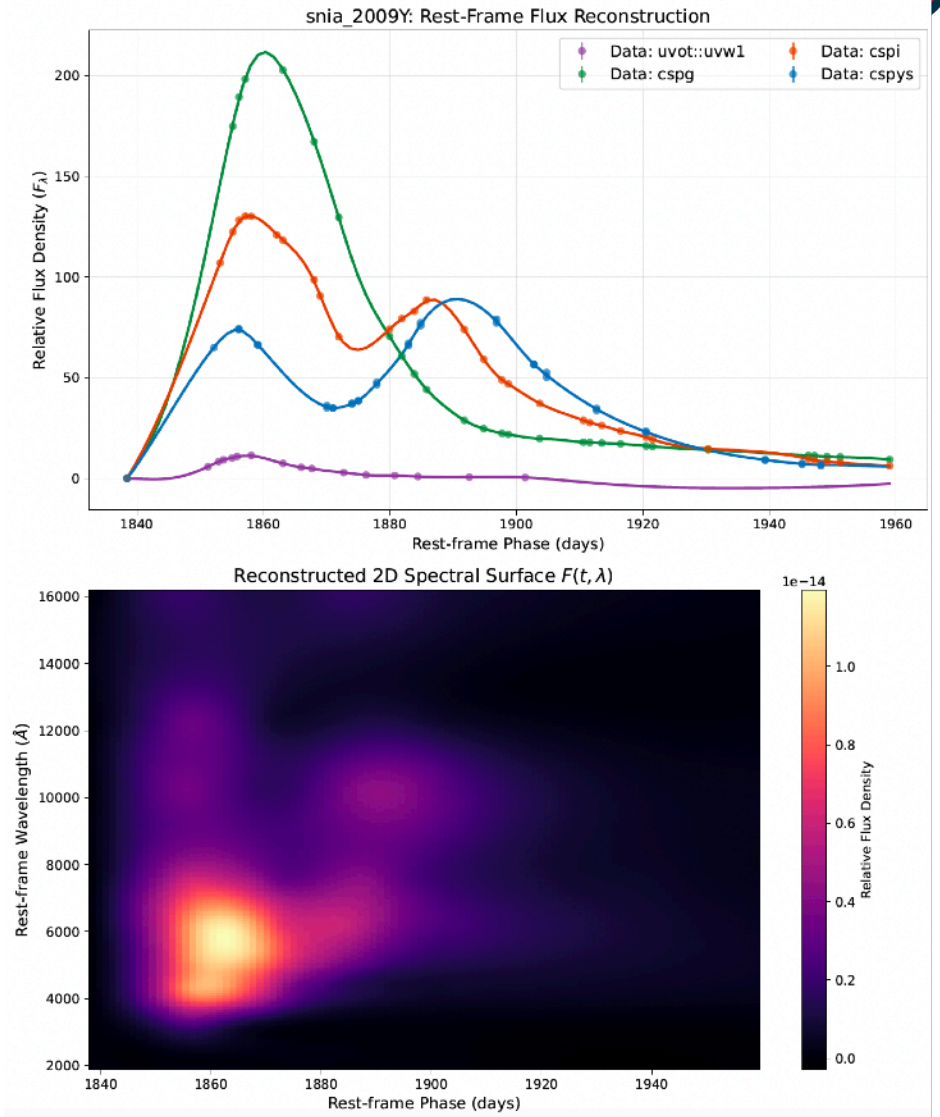
Improving NISP implementation



Testing ID of fast-evolving transients



Implementing a GP-based fit methodology



Transient Database - working environment

Secure flask-based internal database (by E. Cappellaro)

Euclid SNe/Transients SWG
user: **luca**

Program euclid ▾
 Trigger selfcal ▾
 Search dr1 ▾

Search

Select/View

Database

candidate vetting
vetting stats

candidate list
master list

candidate select
master focus

follow up

manage light curves

version: 0.1.045
03/17/2026 16:35:29

Euclid SNe/Transients SWG
user: **luca**

MASTER LIST [euclid running]

filter date obs type
VIS ▾ 230803 ▾ sn ▾
show all

ID	_RA	DEC	type	subtype	note	
selfcal_VIS_230803_250103_1	17:55:23.397	65:13:48.204	sn			show
selfcal_VIS_230803_250103_2	17:52:22.335	65:31:44.884	sn			show
selfcal_VIS_230803_250103_3	17:58:37.814	65:13:23.203	sn			show
selfcal_VIS_230803_250103_12	17:52:48.685	65:33:52.139	sn			show
selfcal_VIS_230803_250103_13	17:54:39.971	65:02:58.073	sn			show
selfcal_VIS_230803_250103_16	17:57:08.950	65:27:31.184	sn			show
selfcal_VIS_230803_250103_23	17:57:56.193	65:29:12.675	sn			show
selfcal_VIS_230803_250103_25	17:50:35.137	65:12:07.383	sn			show
selfcal_VIS_230803_250103_26	17:51:17.563	65:06:34.284	sn			show
selfcal_VIS_230803_250103_27	17:53:52.681	65:01:16.745	sn			show
selfcal_VIS_230803_250103_28	17:54:14.249	64:57:01.297	sn			show
selfcal_VIS_230803_250103_29	17:55:40.273	65:14:29.269	sn			show
selfcal_VIS_230803_250103_31	17:51:22.334	65:24:30.987	sn			show
selfcal_VIS_230803_250103_32	17:56:10.342	65:40:51.918	sn			show
selfcal_VIS_230803_250103_45	17:58:13.463	65:16:06.633	sn			show
selfcal_VIS_230803_250103_51	17:56:13.598	64:51:23.106	sn			show
selfcal_VIS_230803_250103_55	17:50:24.989	65:13:40.340	sn			show
selfcal_VIS_230803_250103_65	17:54:02.035	65:24:55.842	sn			show
selfcal_VIS_230803_250103_87	17:55:26.986	65:33:23.887	sn			show
selfcal_VIS_230803_250103_89	17:55:41.259	64:54:17.666	sn			show
selfcal_VIS_230803_250103_92	17:59:30.864	65:11:31.615	sn			show
selfcal_VIS_230803_250103_97	17:54:18.139	65:33:18.466	sn			show



Transient Database - working environment

Direct data vetting

Dynamic environment

Additional information useful for photom. Classification, rates Studies, etc.

Euclid SNe/Transients SWG
user: luca

selfcal_VIS_240619_231001_8a [euclid running]

selfcal_VIS_240619_231001_8a [redacted] VI
 score=150 [redacted]
 pointing-- MJD=60480.9296 UT=240619

	xc	yc	fwHM	fluxr	isoa	mag	class	rgood	ml
dif	5062.40	30519.00	1.56	1.10	72.0	22.44	0.98	0.96	0.86
new	5062.44	30519.35	1.89	1.35	143.0	22.17	0.98		
ref	5062.42	30520.60	3.78	2.00	80.0	23.86	0.05	dist=0.2"	

240619 D240619 REF: 231001

[edit lc](#) [download lc](#)

CANDIDATE 2025-07-20 09:13 EC

label	note	DATeref
sn	<input type="text"/>	231001

[update candidates](#)

MASTER LIST 2025-07-22 17:47 mariateresa

