



DARK ENERGY
SPECTROSCOPIC
INSTRUMENT

U.S. Department of Energy Office of Science

Msc. Luis Miguel Hernández Soriano

Advisor: Dr. Mariana Vargas Magaña

Project: Impact of Fibber Assignment in the study of clustering using the two and three point correlation functions

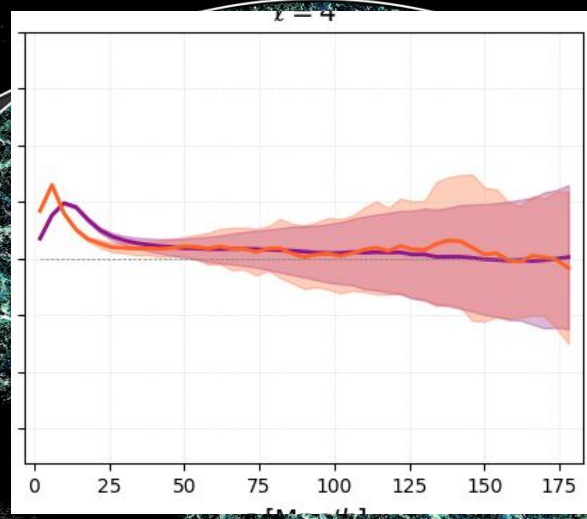
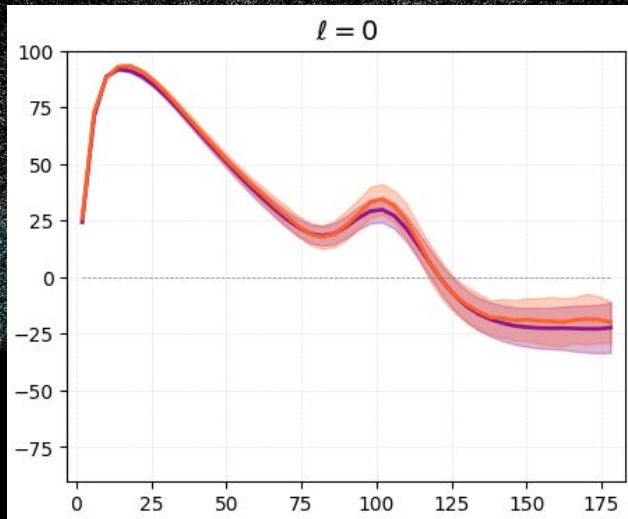


Claire Lamman | DESI Collaboration

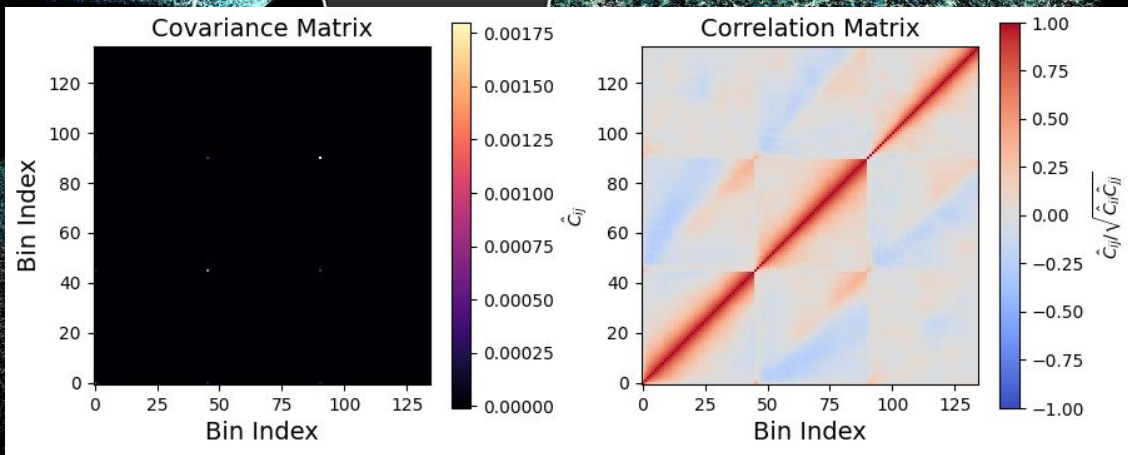
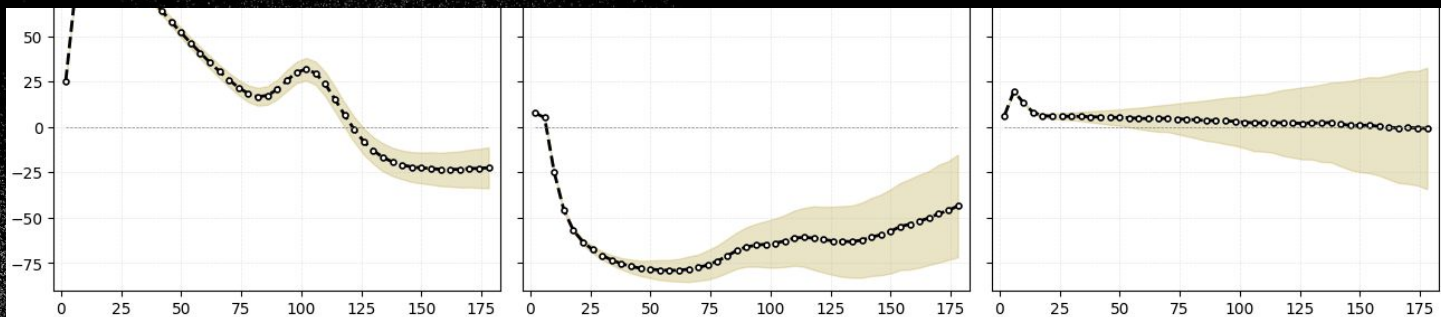
*A slice of galaxy positions from DESI's five-year survey, colored by galaxy type.
Large butterfly: spans 3 degrees in declination and up to redshift 4.
Enhanced butterfly: spans 10 degrees in declination and up to redshift 0.2.*

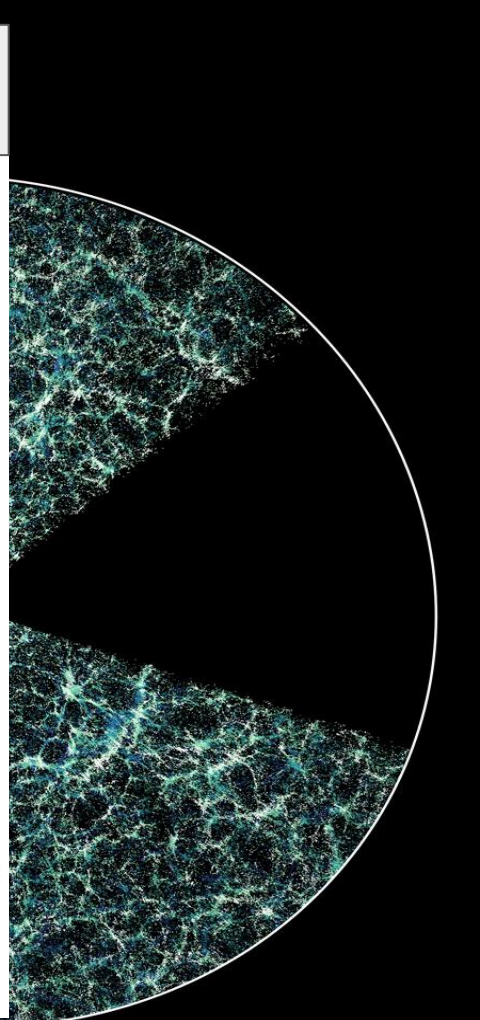
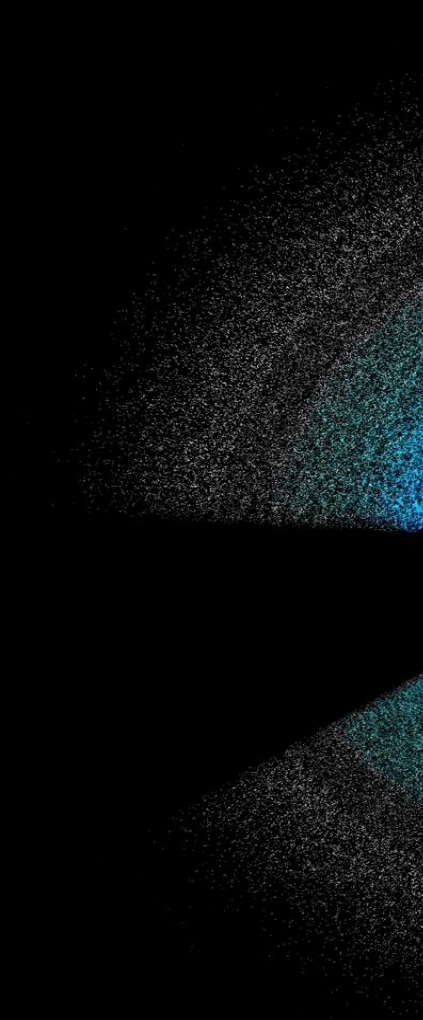
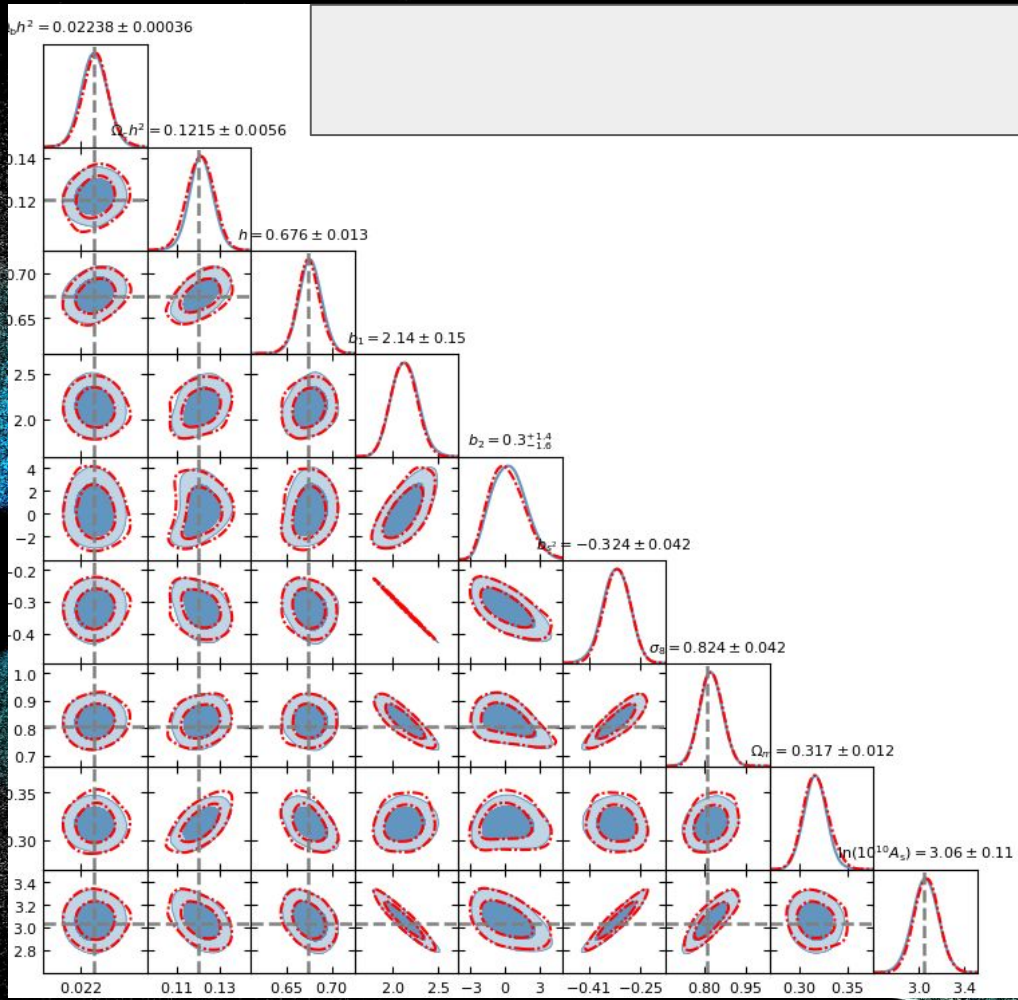
luismiguelhs@estudiantes.fisica.unam.mx

2PCF: Measurements

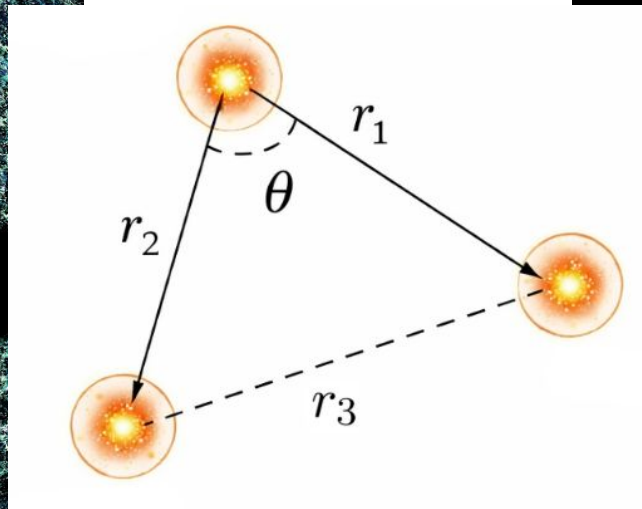
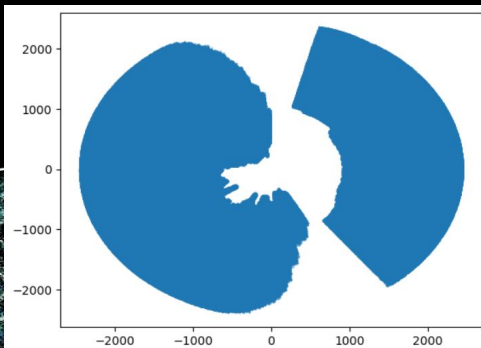
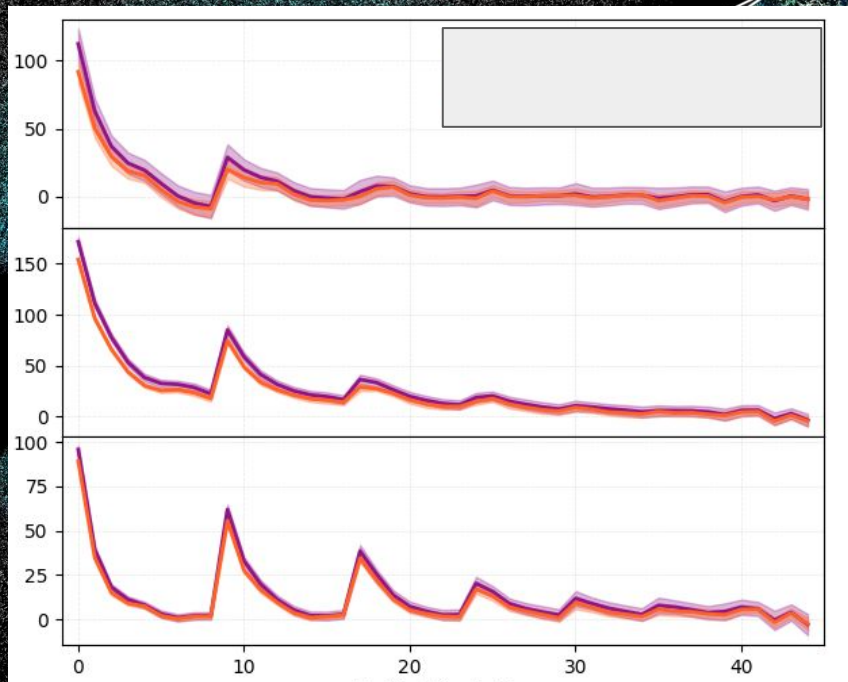


- LRG
- $z[0.6, 0.8]$

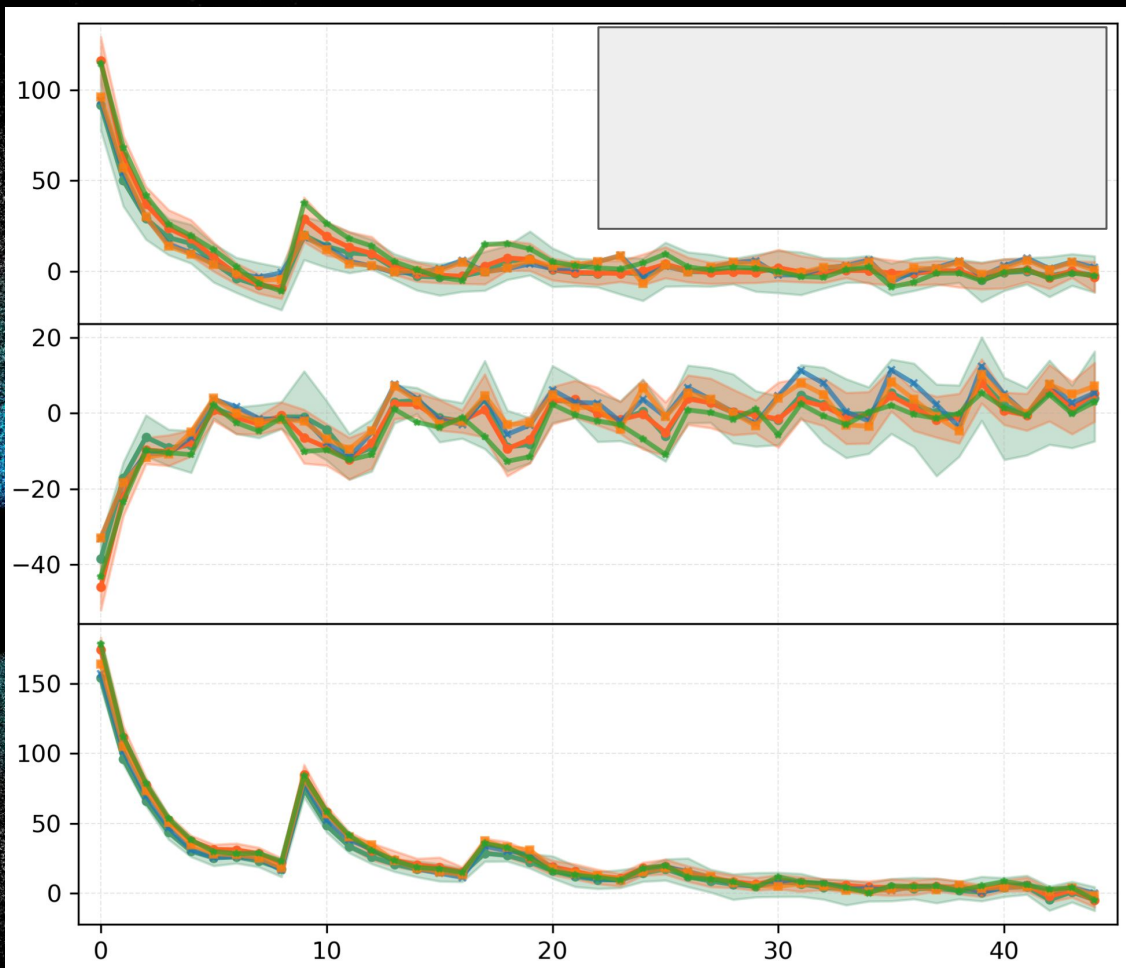




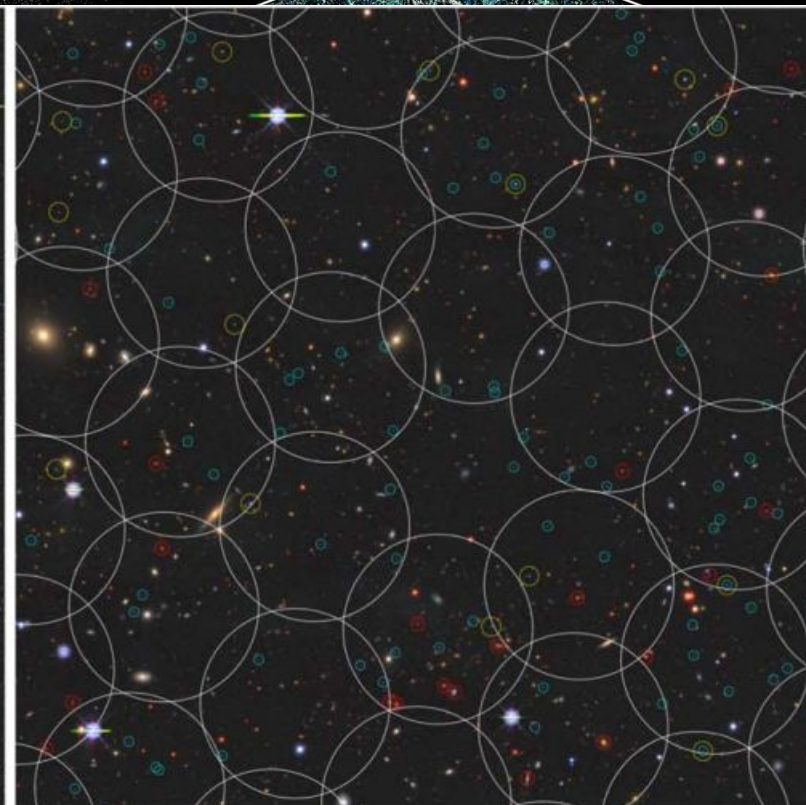
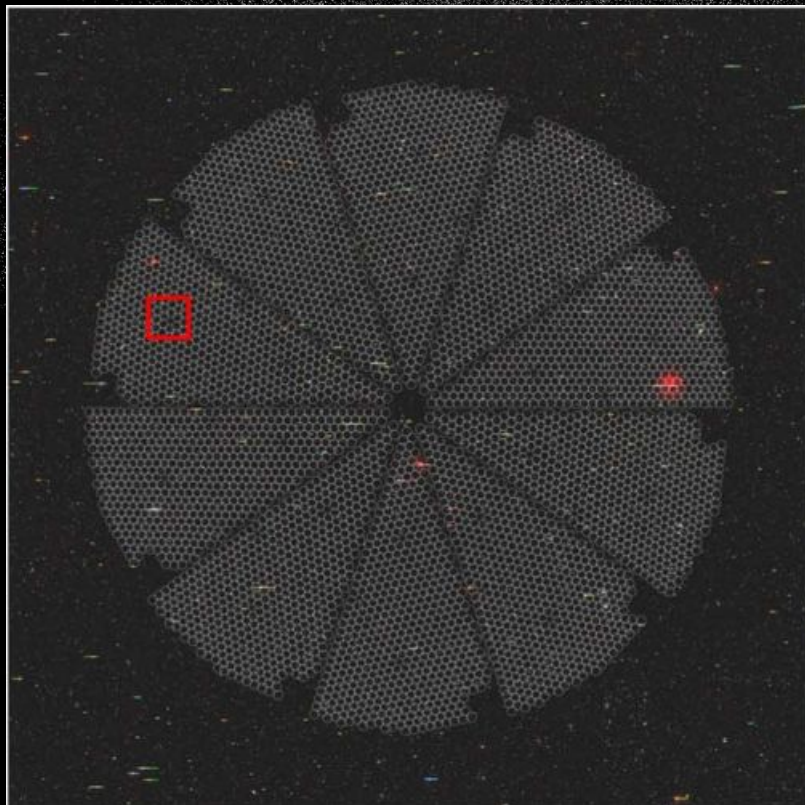
3pcf: Measurements



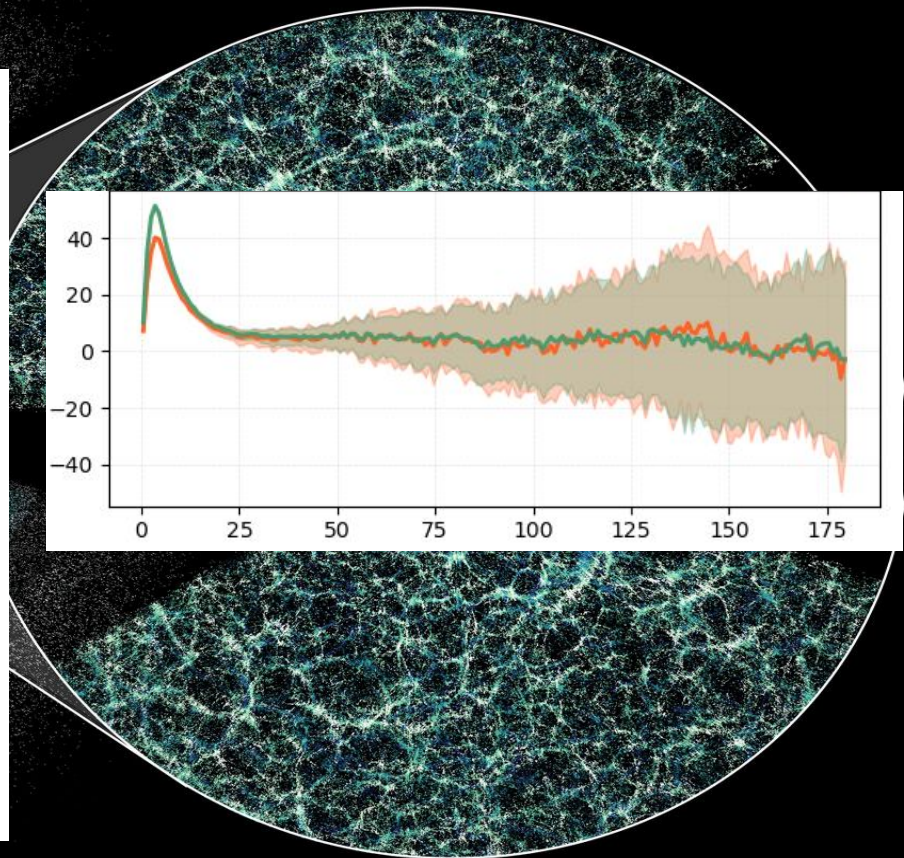
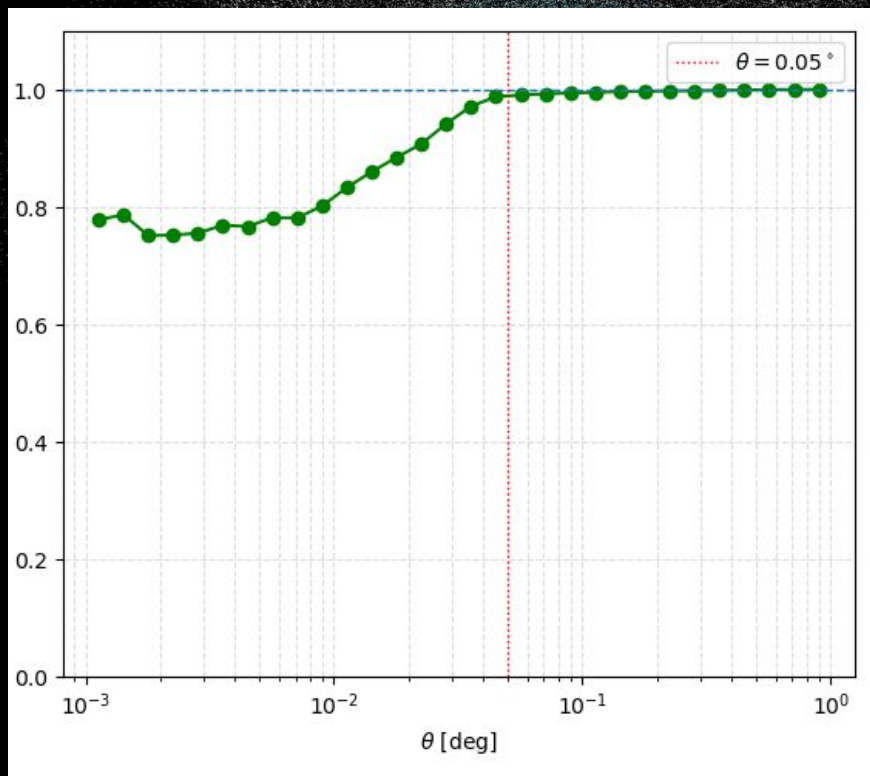
0.29 node hours per mock



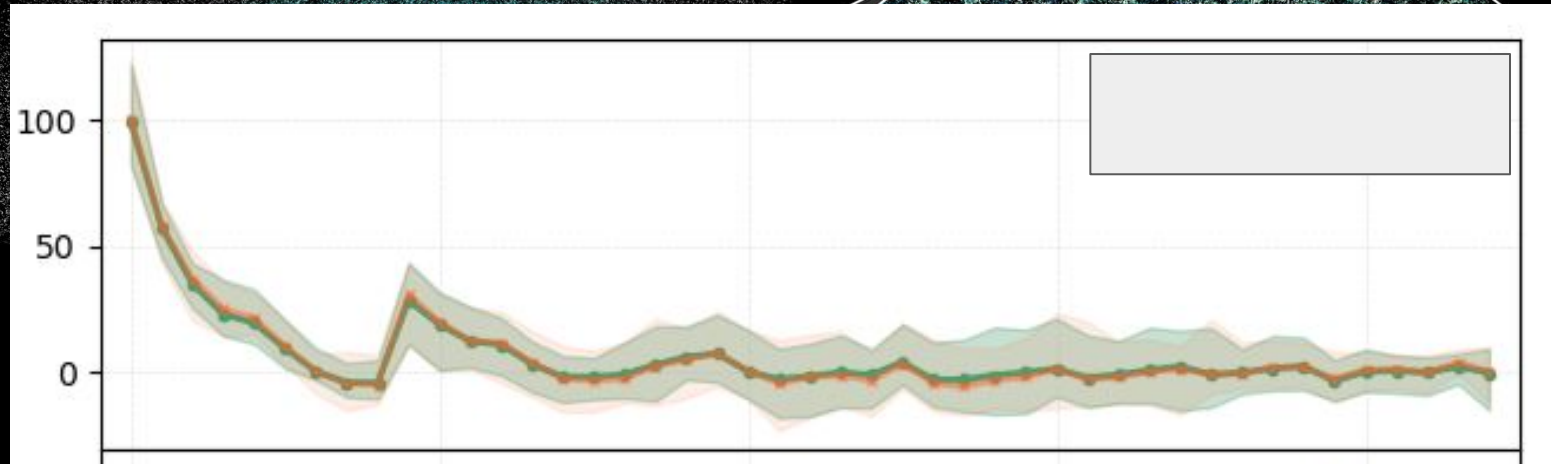
Effect of Fiber Assignment



Effect of FA 2PCF

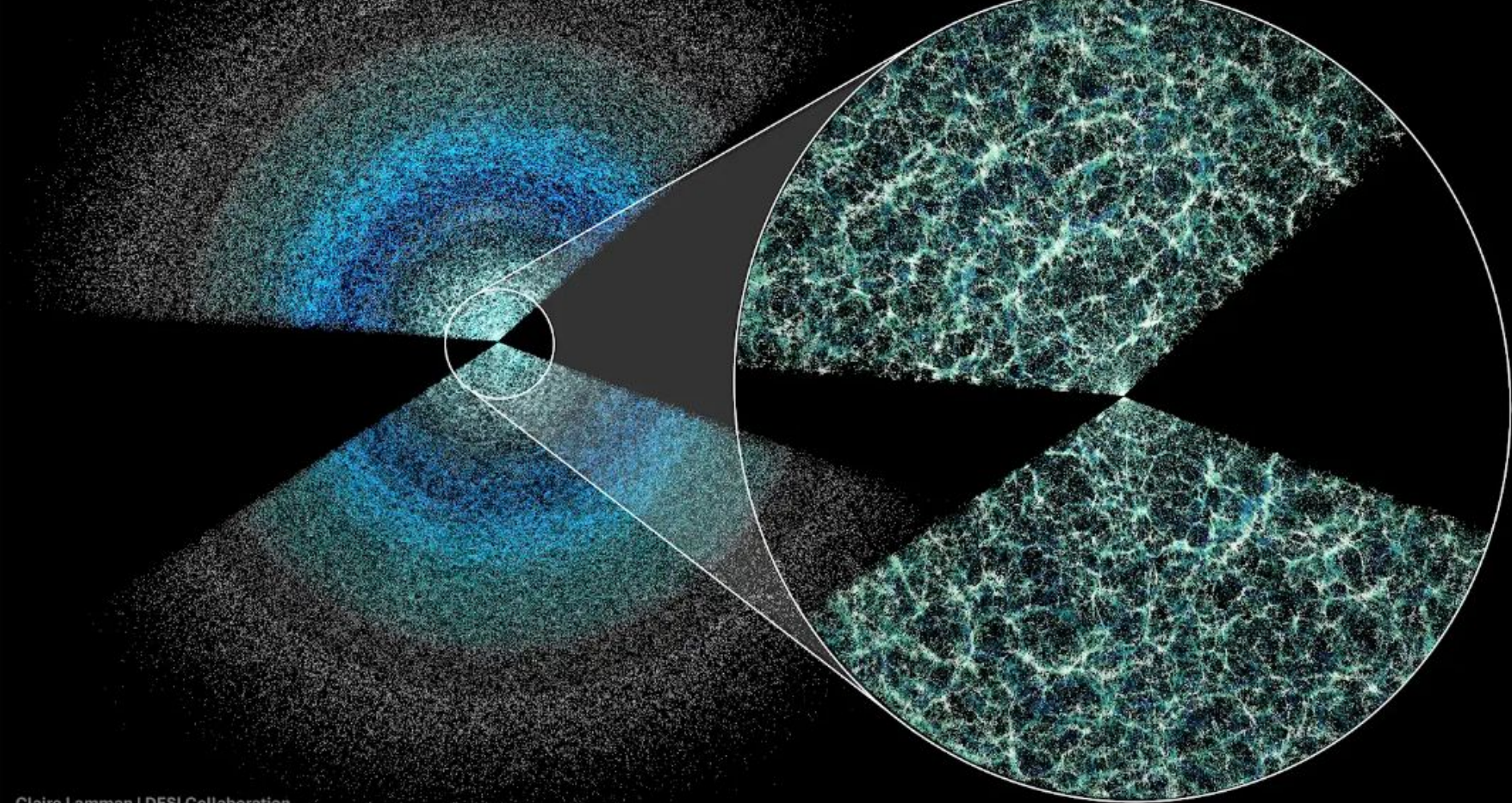


Effect of FA 3PCF



About me





Claire Lamman | DESI Collaboration

A slice of galaxy positions from DESI's five-year survey, colored by galaxy type.

Large butterfly: spans 3 degrees in declination and up to redshift 4.

Enhanced butterfly: spans 10 degrees in declination and up to redshift 0.2.