

USING AI IN ICON ANALYSIS

AI and Artworks: Object Detection, Image Classification and Iconographic Analysis

Εἰκὼν

The term comes from the Greek word *ikon* meaning image. An icon was originally a picture of Christ on a panel used as an object of devotion in the orthodox Greek Church from at least the seventh century on.

In Eastern Orthodox Christianity **icon** is a representation (as in a mural, a mosaic, or a painting on wood) of sacred events or especially of a sacred individual used as an object of veneration or a tool for instruction.



AI generated icon of St. Clement Mary Hofbauer, patron saint of Vienna

THE LIGHT OF THE LOGOS

- International exhibition of sacred art held last year in Belgrade, Serbia
- Authors are iconographers and contemporary artists
- Icons are created on diverse surfaces in various techniques

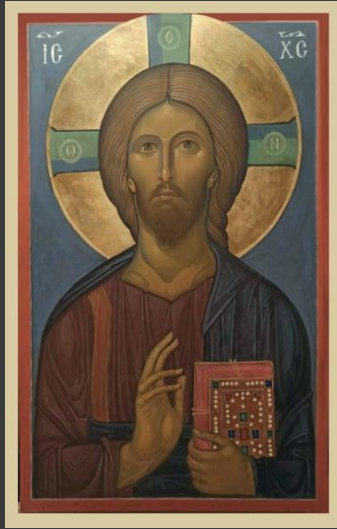


Đorđe and Jelena Savić, The Creation of the World, acrylic on MDF, ceramics



Mara Ognjenović, The Meeting of Saints Joachim and Anne, egg tempera on panel

ICON CLASSIFICATION



Vladimir Bata Kidišević , Jesus Christ, egg tempera on wooden panel, gilding

- ✓ Jesus Christ
- ✓ Virgin Mary
- ✓ Saints
- ✓ Collective icons



Siniša Trivić, The Transfiguration of the Lord, egg tempera on panel



Grigore Popescu-Muscel, Theotokos with Christ, egg tempera on panel



Andrea Simić, Saint Anna the Mother, egg tempera on panel with gilding

Could you please analyze this icon?

ChatGPT AI Art Analyzer

Core Composition & Iconography

At the center, Christ is depicted frontally, blessing with both hands—an unusual but powerful variation. Traditionally, one hand blesses while the other holds a Gospel, so this dual gesture emphasizes **cosmic authority and divine balance**.

- The halo (a **cruciform nimbus**) contains the Greek inscription:
 - "Ο ΩΝ" (**Ho On**) meaning "The One Who Is" — a direct reference to God's eternal nature (Exodus 3:14).

Gemini



Analysis ▾

This icon is a contemporary ceramic and painted work titled "**Stvaranje Sveta**" (The Creation of the World), as indicated by the Serbian Cyrillic inscription at the top. It depicts **Christ Pantocrator** (the Creator/Ruler of All) in a cosmic setting, blending traditional Orthodox iconography with a modern, sculptural frame.

Here is a breakdown of the visual and symbolic elements:

1. Central Figure: Christ the Creator

- **The Halo (Nimbus):** Inside the golden halo are the Greek letters **Ο Ω Ν** (Ho Ōn), which translate to "The One Who Is" or "I Am Who I Am," signifying Christ's divinity.

PANDA PIXEL

DESCRIPTION

A rectangular religious icon is depicted, featuring a bearded male saint with a prominent gold halo and ornate robes in shades of gold, teal, and white. The icon has a silver-grey background adorned with intricate gold decorative patterns, architectural elements resembling churches, and Cyrillic text.

OBJECTS DETECTED

religious icon saint halo ornate robes book decorative frame
architectural elements Cyrillic text

COLOR PALETTE

Gold
#D4AF37 · 40%

Silver/Light Grey
#C0C0C0 · 35%

Teal/Dark Green
#008080 · 15%

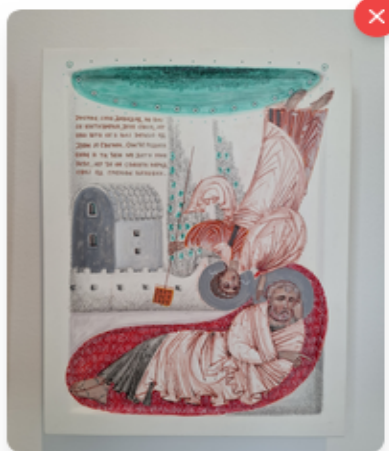
Brown
#8B4513 · 5%

White/Cream
#F5F5DC · 5%

Analyze Image

ART HELPER

artwork



8.5

Exceptional

As an experienced art critic and educator, I find this artwork to be a compelling contemporary take on traditional iconography, infused with a unique personal style. It demonstrates a thoughtful engagement with historical art forms while introducing modern visual language.

Composition

STRENGTHS OF AI ART ANALYSIS

✓ **COLORS AND THEIR SYMBOLISM**

AI effectively detects colors and their nuances, as well as their meaning in a specific detail, object, figure, or artwork as a whole.

✓ **GESTURES AND POSTURE OF THE SUBJECT**

All gestures are accurately described and correctly identified, with their names in iconography stated.

✓ **GARMENTS AND DRAPERY**

AI correctly identified all clothing items applying specific terms used in religion and iconography.

✓ **COMPOSITION**

Composition and simmetry are identified with remarkable accuracy.

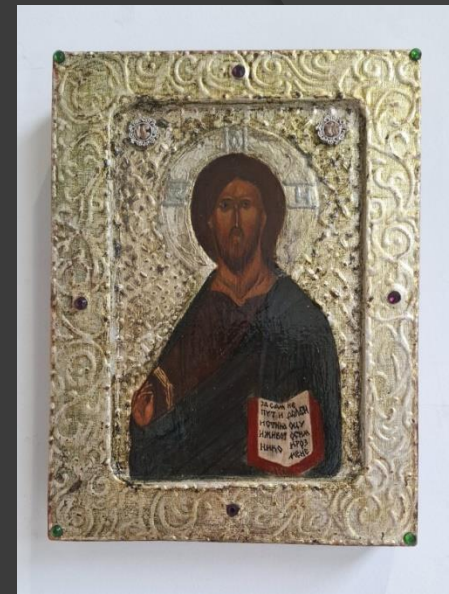
TEXTURE ANALYSIS



Ivana Bambić, Saint Phanourios,
acrylic on canvas



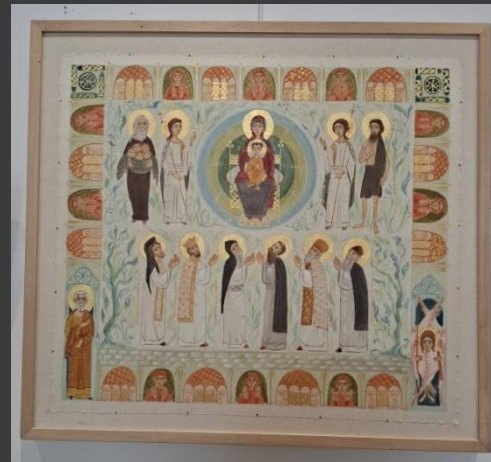
Alin Bogdan Pater, Saint John of
Shanghai, egg tempera on glass



Stefan Đurđanović, Christ the
Savior, pigment on board,
silver leaf, relief paste



Marija Vukosavljević, Saint
Alypius the Stylite,
embroidery



Milica Mišić, Heavenly Liturgy: Saint Deacon Avakum, Prince Lazar, Saint Simeon, Saint Sava, Saint Bishop Nikolaj of Žiča, and Saint Justin of Čelije offer prayers before the throne of the Most Holy Theotokos and Our Lord Jesus Christ, egg tempera on silk



Višnja Devrnja, Saint
Catherine the Martyr,
watercolor

TEXTUAL INFORMATION ANALYSIS



Suzana Parenta, Saint Stephanida of Skadar and Bitola, egg tempera on linden panel, burnished 24k gold

3. The Landscapes (Left and Right)

The two structures on either side represent the two main geographical locations associated with her life:

- **Left (Shkodër/Skadar):** The humble house near the mountains likely represents her origins or her early life in the Skadar region (modern-day Albania).
- **Right (Bitola):** The white church represents the monastery or the city of Bitola (North Macedonia), where she spent her later years and met her end. The winding paths leading from both structures toward her figure symbolize her spiritual journey and the "narrow path" of the ascetic.



Landscape & Narrative Layer

This is where the icon becomes especially distinctive.

Left side:

- A **small house with a red roof**, nestled near rocky hills.
- Suggests **origin, humility, or early life**.

Right side:

- A **church with a blue dome**, connected by a winding path.
- Symbolizes **spiritual destination or transformation**.

The Path:

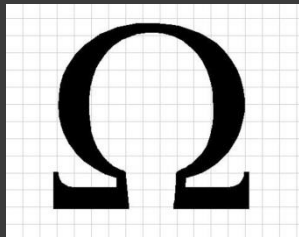
- The winding road acts as a **visual metaphor for the spiritual journey**—not linear, but unfolding.
- This narrative landscape is reminiscent of **hagiographic storytelling**, but rendered in a simplified, almost folk-inspired manner.

“Iconography Meets Modern Tech Satire”

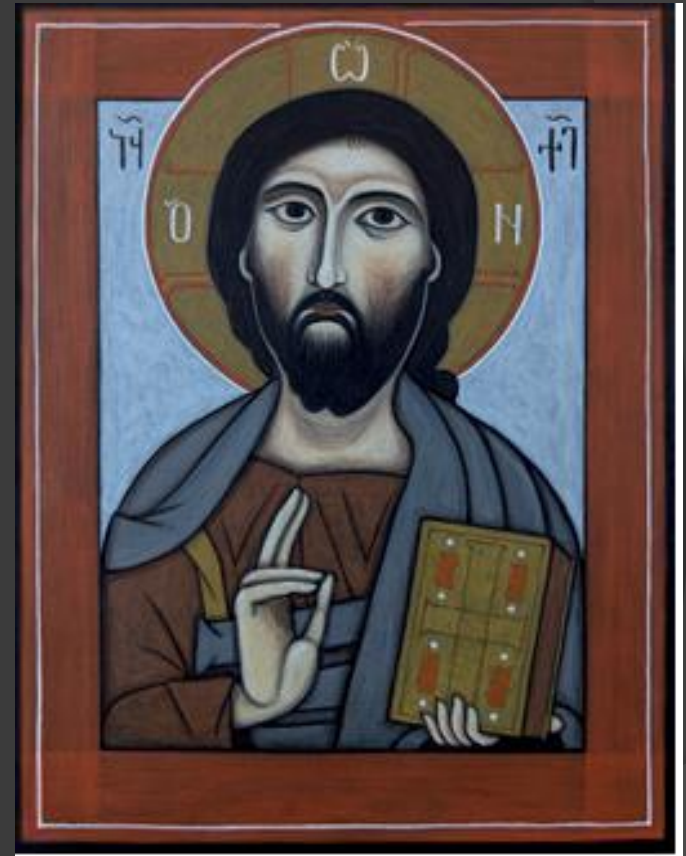
◆ Analysis ▾

This image is a fascinating piece of contemporary art that mimics the style of **Byzantine or Orthodox Christian iconography** while introducing playful, modern “Easter eggs.”

At first glance, it appears to be a traditional icon of **Christ Pantocrator** (Christ the “Ruler of All”), but closer inspection reveals several subversions of that tradition.



The Greek letter omega, often paired with alpha , represents Christ in Orthodox Christianity as the "Beginning and the End," signifying his eternal nature (Revelation 22:13). It is typically depicted flanking Christ's head on icons or in the cross-monogram .



Jeffrey Gomez, Christ Pantocrator, egg tempera (Philippines-Romania)

This is where the image moves from "religious art" to **satire or cultural commentary**:

- **The Apple Logo:** At the top of the halo, where you might expect a cross or a Greek abbreviation for "The Being" (ὁ ὢν), there is a clearly defined **Apple Inc. logo**.
- **The Book:** The book Christ is holding resembles a **tablet or a stylized laptop** (note the metallic look and the geometric patterns that look like ports or buttons).
- **The "Script":** The characters in the background and within the halo appear to be a mix of pseudo-Cyrillic, Greek, or perhaps even stylized tech-symbols, rather than standard religious abbreviations like "IC XC."

3. Potential Interpretations

The juxtaposition of sacred imagery with "Big Tech" branding suggests a few themes:

- **The "Religion" of Technology:** A commentary on how modern society treats technology and brands with a level of devotion once reserved for the divine.
- **Steve Jobs Comparison:** Given the dark hair and beard, some might see a subtle caricature of Steve Jobs, who was often viewed as a "prophet" of the digital age.
- **Consumerism:** By placing a corporate logo in the position of God, the artist might be critiquing the commercialization of the human spirit.

Is this reproduction?



Gemini



Andrei Florin Musat , Arhanghel Gabriel, fresco

This image is a reproduction of a famous detail from the **White Angel** (*Beli Anđeo*) fresco, originally located in the **Mileševa Monastery** in Serbia. It depicts the **Archangel Gabriel** sitting on the tomb of Christ.

The style is characteristic of the 13th-century "Golden Age" of Serbian medieval art, which transitioned from a rigid Byzantine style toward a more fluid, humanized Palaeologan Renaissance aesthetic.

Thank you for your attention!
Vielen Dank für Ihr Aufmerksamkeit!

ljudmiladjukic@gmail.com