

TOBB-CERN Sanayi İrtibat Ofisi

M. Hakan KIZILTOPRAK

Türkiye Odalar ve Borsalar Birliği (TOBB)
Türkiye CERN Sanayi İrtibat Temsilcisi
Türkiye CERN Bilgi Transferi Kurulu Temsilcisi
Türkiye CERN Finans Komitesi Delegatesi

CERN Sanayi İrtibat Temsilciler Kurulu Başkanı (2017-2021)
CERN Sanayi İrtibat Temsilciler Kurulu Başkan Yrd (2021-2025)

TOBB Ekonomi ve Teknoloji Üniversitesi (TOBB ETÜ)
Direktör, Teknoloji Transfer Ofisi

cern@tobb.org.tr / +90 312 218 20 39



CERN ve Ortak Üyelik



CERN Konseyi

TENMAK (TAEK)

Genel Direktör

**Bilim Politikaları
Komitesi**

Finans Komitesi

TOBB

KT Kurulu

(Technology Transfer representatives
from each Member State)

KT Medical Applications

ILO Kurulu

(Industrial Liaison Officers from each
Member State)



CERN ve Ortak Üyelik

- ▶ Bilimsel Araştırma ve Faaliyetlere Resmi Katılım
- ▶ **Yapılan Alım ve İhalelere Resmi Katılım**
- ▶ Türk Pasaportu ile Açılan Profesyonel İş ve Pozisyonlara Başvuru / Çalışma Hakkı
- ▶ Liseden Başlayarak Doktora Sonrası Araştırmacı Seviyelerine Kadar Açılan Kısa/Uzun Dönemli Eğitim/Staj/Çalışmalara Katılım
- ▶ **CERN Teknolojilerine Erişim / Kullanım**



CERN ve Ortak Üyelik

İhale ve Tedarik Dağılımı (~300 Milyon CHF) (30+ Ülke)

- ▶ <50.000 CHF ~%12 □ CERN Procurement
- ▶ 50.000-200.000 CHF ~%30 □ cern@tobb.org.tr
- ▶ 200.000 CHF ve üzeri ~%58 □ Web

[https://forthcoming-ms.app.cern.ch/#/!](https://forthcoming-ms.app.cern.ch/#/)

Forthcoming Tendering Procedures

Forthcoming tendering procedures expected to exceed 200k CHF are listed below. Except if specified otherwise, the firms that have the right to reply to the Market Survey are only the ones which country of origin of supplies and services is one of CERN Member States.

If you would like to know more about a specific procedure, please, click on one of the following procedures. In case you are interested in a specific Market Survey, you will find the related document under "Available action". However, if the Market Survey documents have not been released yet, you are invited to express your interest by sending an email to the email address depicted in the same section.

Firms may reply as long as the tendering procedures are still on this page. Therefore, in case the deadline for replies indicated in the Market Survey cover letter is over, disregard the date on the cover letter but please send your reply to the Market Survey as soon as you can.

If you have any questions, please address them to procurement.service@cern.ch or to the procurement or technical officers in charge of the corresponding market survey.

Finally, we invite you to consult this page frequently as the status of each procedure is regularly updated.

Type keywords e.g. Magnets, Software, Civil Engineering, ...

200k 400k 1.5M 5M 10M

Cost Range (CHF)

More Filters Share Search Results Reset Filters

Publication date	Type of contract	Reference	Description	Cost Range (CHF)	Status	Next step
03/06/2025	Supply	MS-5115/EN	Supply and installation of two overhead travelling cranes for cleanrooms	400k - 1.5M	Announcement	Market Survey 09/2025
03/06/2025	Supply	DO-34769/EP/CMS	Supply of 20 servers for the CMS.	200k - 400k	Announcement	Price Enquiry 06/2025
26/05/2025	Supply	DO-34763/SY	Supply of Conditioning High Voltage generators with DC voltages up to 300kV/1mA, adjustable for Septa equipment.	200k - 400k	Announcement	Price Enquiry 06/2025
22/05/2025	Supply	IT-5114/TE	Supply of ten magnets for the north area renovation.	1.5M - 5M	Announcement	Invitation to Tender 07/2025
20/05/2025	Supply	MS-5070/SCE	Civil engineering works for construction of a retention basin on the Swiss part of CERNs Meyrin site.	400k - 1.5M	Market Survey	Invitation to Tender 08/2025
20/05/2025	Supply	DO-34739/TE/CRG	Overhaul of 75 low-voltage (400 V) and 70 medium-voltage (3.3 kV) electric motors in accordance with	200k - 400k	Announcement	Price Enquiry 10/2025



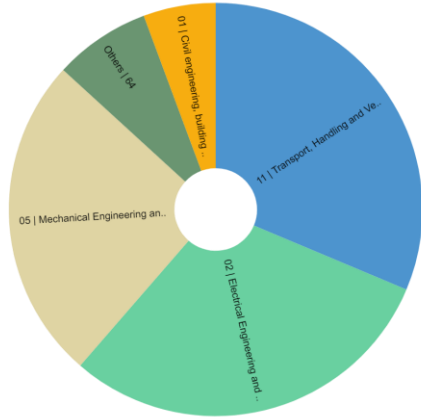
Pozitif Görünüm

- ▶ Son 10 yılda
 - ▶ **2632** teknoloji şirketi CERN Networküne Kayıt oldu, **1600+** duyurularımızı almaya devam ediyor.
(Teknoloji odaklı olmayan alım türüne göre gerektiğinde firmalar aranıyor, örneğin kupa, hediyelik eşya, sırt çantası, iş elbisesi, basımyayın, vb)
 - ▶ **351** şirket CERN İhalelerine Katıldı.
 - ▶ **43** şirket sipariş aldı, **10+ Milyon CHF** sipariş teslim edildi / ödendi.
 - ▶ **SAMM Teknoloji, Standard Pompa, Visan Vinç, 2M Kablo** düzenli/uzun dönemli (3+2 yıllık) tedarik ihaleleri kazandılar.



Pozitif Görünüm

- ▶ 29 şirket, 19.5 Milyon CHF büyüklüğündeki farklı* ihalelerde 2 inci oldu.
(* 1 inci şirket Türk olmayan)
- ▶ 17 şirket, 11.1 Milyon CHF büyüklüğündeki farklı* ihalelerde 3 üncü oldu.
(* 1 inci ve 2 inci şirket Türk olmayan)
- ▶ Mekanik Hassas İşleme ile başlayan işlerimiz değişik alanlara yayıldı.



- 11 | Transport, Handling and Vehicles
- 02 | Electrical Engineering and magnets
- 05 | Mechanical Engineering and raw materials
- Others
- 01 | Civil engineering, building and technical services

İhale ve Sipariş Alan Firmalar

İhale Alanlar

- Ankara Dora Makina
- İstanbul Albaksan
- Kayseri Gözüküçük Makina (Kadın Girişimci)
- İstanbul ASAŞ Alüminyum
- İstanbul Mistel Kablo (Kadın Girişimci)
- İstanbul EGE / GEMA Endüstriyel Kontrol
- Kocaeli Mapsis Havacılık (Kadın Girişimci)
- Kocaeli-Kayseri DoğaCAN / CryoCAN Basınçlı Kaplar
- İstanbul Ford – Otosan
- Manisa HMS Makina
- Manisa TORA Makina
- Ankara GES Mühendislik
- Ankara OKURSOY AŞ
- Bursa ÇİMTAŞ Hassas İşleme
- İstanbul **2M Kablo**
- Denizli Aysan Raf Sistemleri
- İstanbul MTN Plastik ve Kalıp
- Bursa Mavi Jet
- İstanbul AYVAZ

- Özel Alışimlardan Mekanik Parçalar (Montajlı ve Montajsız)
- Özel Bakır Parçalar, Hızlandırıcılarda kullanılan Montajlı Soğutma diskleri
- Özel Alışimlardan Mekanik Parçalar (Montajlı ve Montajsız)
- Avrupa da temini zor ebatlarda ve hassasiyetlerde özel alışım Alüminyum tüpler
- Elektrik Bağlantı ve Topraklama elemanları
- Hassas Akış özellikli kontrol valfleri
- Özel Alüminyum Alışimdan büyük ebatlı Mekanik Parçalar
- Sıvı Azot Soğutma Tankı, Kontrol Sistemleri ve Bağlantı sistemleri (Yerinde montaj ve test)
- 65 adet CERN Kampüsünde kullanılacak personel taşıma araçları
- Özel Alışimlardan Mekanik Parçalar (Montajlı ve Montajsız)
- CERN de uzun yıllardır kullanımda olan eski kalıpların yeniden işlenmesi, yenileştirilmesi
- Özel Alışimlardan Mekanik Parçalar (Montajlı ve Montajsız)
- ATLAS Deneyinde kullanılacak Özel Alüminyum Plakaların İşlenmesi
- Özel Alışimlardan Mekanik Parçalar (Montajlı ve Montajsız)
- **CERN 3+2 Yıllık Radyasyona Dayanıklı Özel CERN isterlerine göre hazırlanmış Kablolara**
- CERN Malzeme Ofisi – Sabit Raf Sistemleri
- Özel Plastik parçaların Tasarım, Kalıp ve Parça İmalatı
- Su Jeti Takım Tezgâhı (CERN Mekanik Atölyesinde Kullanılmak üzere)
- Hızlandırıcılarda kullanılan Özel Metal Körük ve Esnek Metal Borular



İhale ve Sipariş Alan Firmalar

- Kocaeli Sönmez Trafo
- Bursa Bayramoğlu Endüstriyel Çelik
- İstanbul Köseadağ Tel Örmeye
- İstanbul DEHA TECH Basınçlı Kaplar
- Bursa MERTAY Makina
- Ankara ARITES METAL
- Ankara HIPERTEKNOLOJİ Medikal Makina Savunma
- Ankara KPM Makine Savunma
- Ankara OKURSOY Demir Sanayi
- Ankara **Visan Vinç**
- İstanbul **Standart Pompa**
- İstanbul **SAMM TEKNOLOJİ**
- Bolu Başoğlu Kablo ve Profil

Doğrudan alım ile CERN'e giren Firmalarımız

- Bursa Figa Bara ([Kadın Girişimci](#))
- İstanbul Tufan Demir Çelik
- Kocaeli SimPRO

CERN Deneylerine Büyük İşler Yapan Firmalarımız

- Bursa M.F. K. Makina Freze Kalıp Ltd. Şti
- İstanbul EAE Machinery

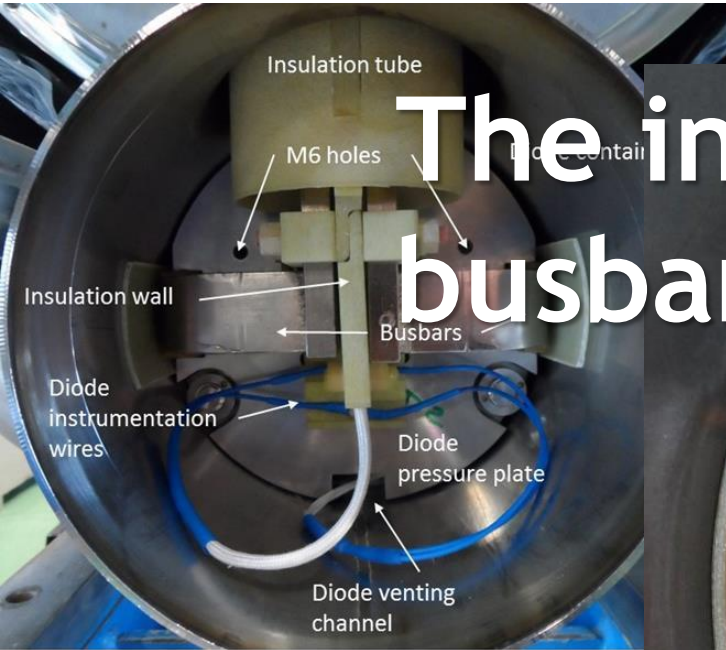
- Hızlandırıcılarda kullanılan Bobin ve Magnetler
- Kompleks Çelik Yapılar
- Kaynaklı ve Örgü Güvenlik Çitleri ve Telleri
- Kompleks Çelik Yapılar
- Kalıp ve Hassas İşleme
- Kompleks Çelik Yapılar
- CNC Hassas İşleme
- CNC Hassas İşleme
- Hassas Alüminyum ve Çelik Yapılar
- CERN 3 Yıllık 38 adet Tavan Vinci**
- CERN 3+2 Yıllık Doğrudan Santrifüj Pompa Tedarikçisi**
- CERN 3 Yıllık Doğrudan Fiber Optik Kablo ve Konnektörlerin Tedarikçisi**
- Radyasyona Dayanıklı Özel CERN İsterlerine göre hazırlanmış Kablolar

- Elektrik Bağlantı Elemanları
- CERN İsterlerine göre hazırlanan özel malzemeler
- CMS Deneyinde kullanılan elektronik kartlar

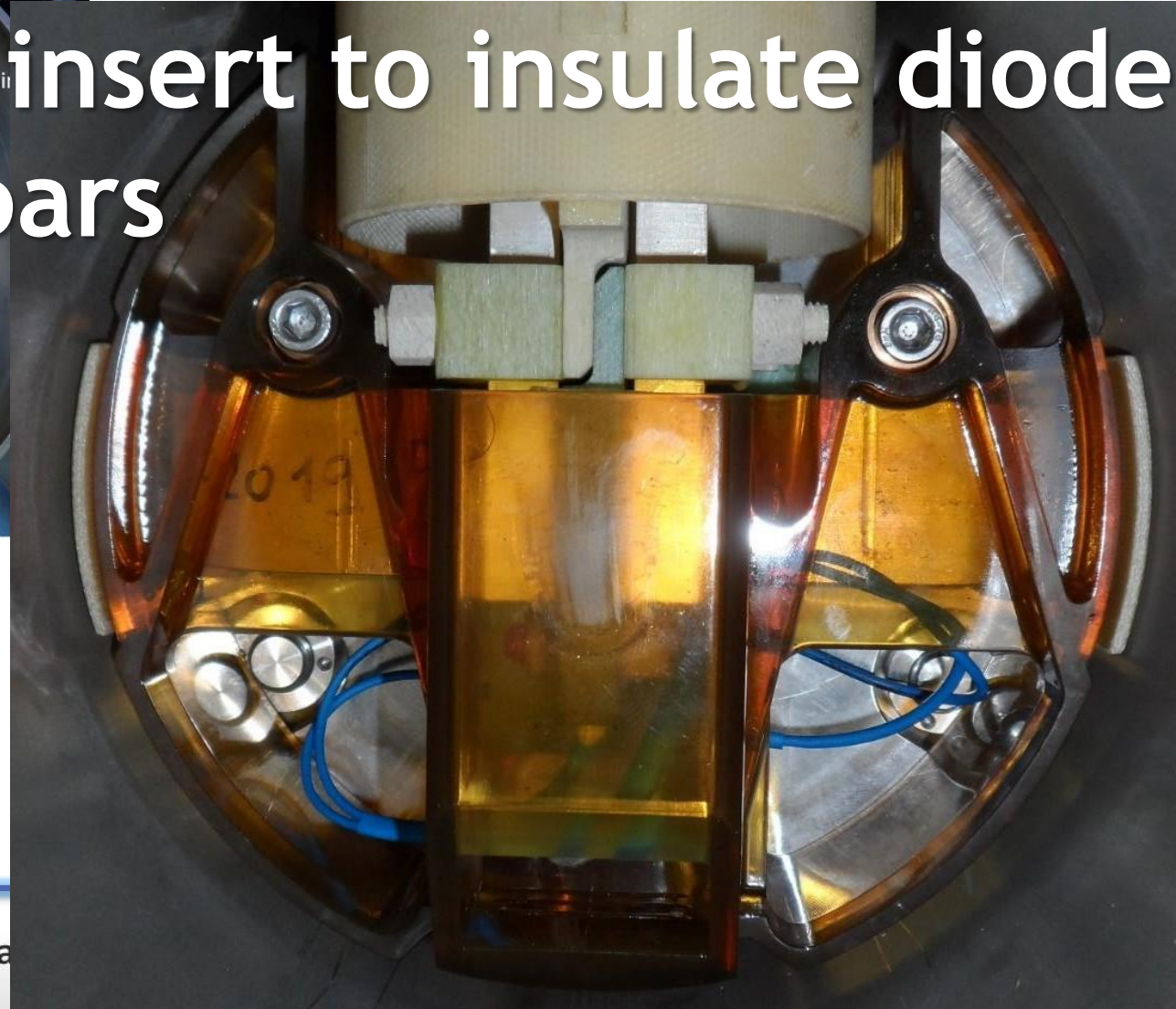
- CMS Deneyinde kullanılan devasa mekanik aksamlar
- CMS Deneyinde kullanılan devasa mekanik aksamlar



MTN Plastik

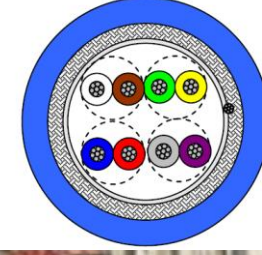


The insert to insulate diode busbars



2M Kablo

Symmetrical FRNC – Cables (Flame Retardant, Non Corrosive)
for Data Transmission and Process control acc. to
CERN – Specification
Li - 2YCH x 2 x 0.22 mm² MCA



struction

Avrupa Nükleer Araştırma Merkezi için radyasyona dayanıklı kablo üretecek



22.04.2019 - 11:33
Güncelleme: 22.04.2019 - 11:33

Yerli kablo üreticilerinden 2M Kablo, Avrupa Nükleer Araştırma Merkezi'nin (CERN) onaylı tedarikçisi oldu. Yapıla açıklamaya göre, şirket tarafından CERN'in belirlediği standartlara göre hazırlanan radyasyona dayanıklı özel kablolar üretilecek



Türkiye Odalar ve Borsalar Birliği



Kocaeli merkezli Türk firmasından CERN başarısı

Kocaeli merkezli Cryocan, CERN için azot tankı üretmek için kolları sıvadı. Dünyanın saygın üreticileri arasında yer alan Cryocan, üretimi kendi know-how'ı ile vanacak

Expansion Joints



Flexible Metal Hoses



Level Control Equipment



Steam Traps



Valves



Fire Protection Equipment



DORA - HMS - TORA Makina



IMG_0405



IMG_9871



IMG_9877



IMG_9878



IMG_9880



IMG_9883



IMG_9886



IMG_9887



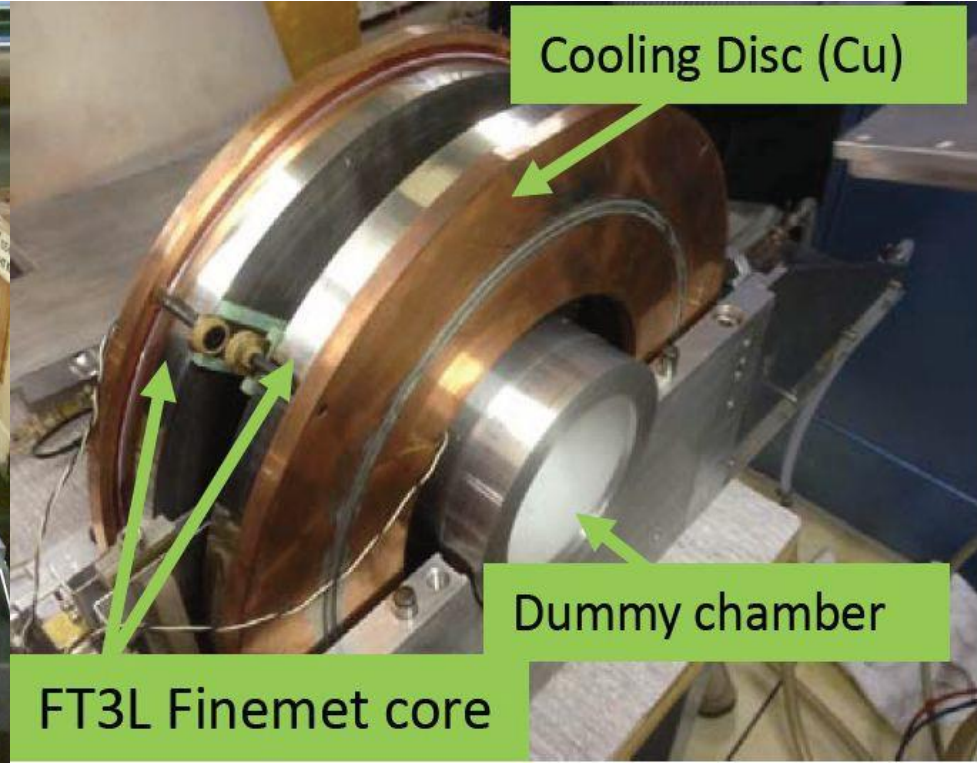
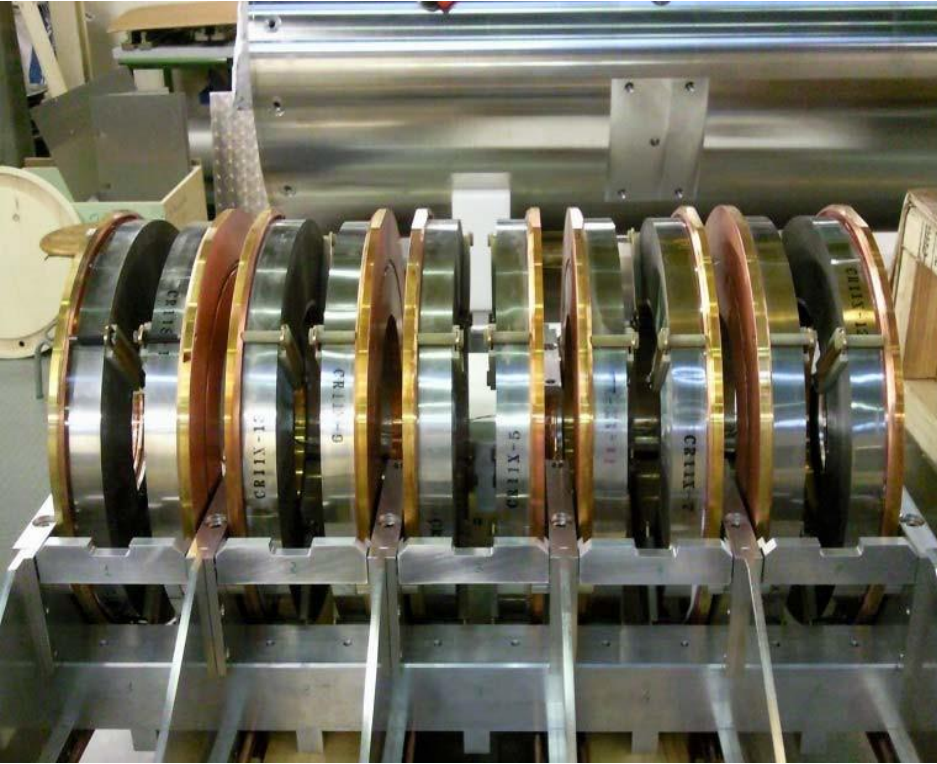
IMG_9888



IMG_9891



ALBAKSAN



ALBAKSAN



SÖNMEZ TRAFO

İhracatta ortalama kilogram başına düşen tutar **1.37 Dolar**

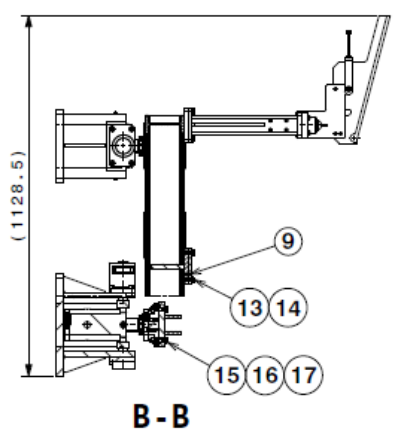
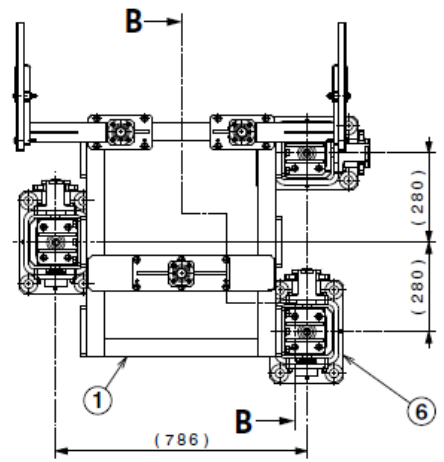
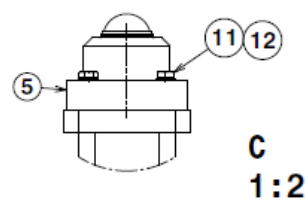
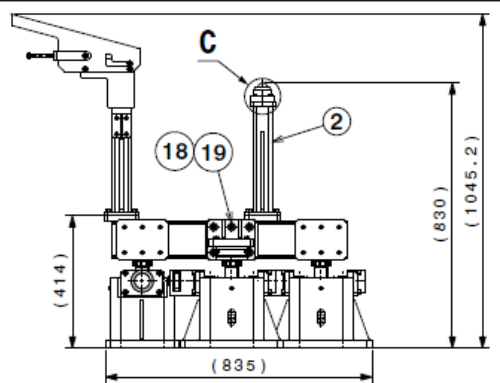
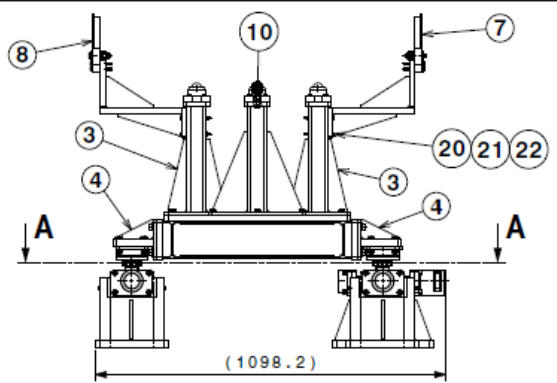
Bu alanda Dünyadaki genel fiyatlar:

Kg. Başı satış tutarı sadece bobin için **80 Euro/kg'ın** üzerinde

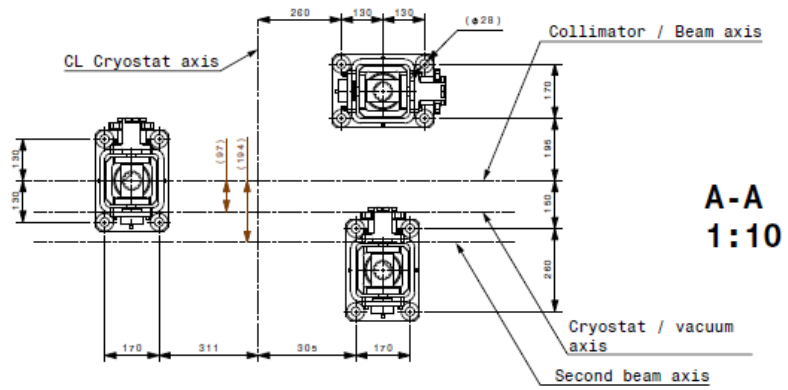
Mıknatısın ise **250 Euro/kg'ın** üzerinde



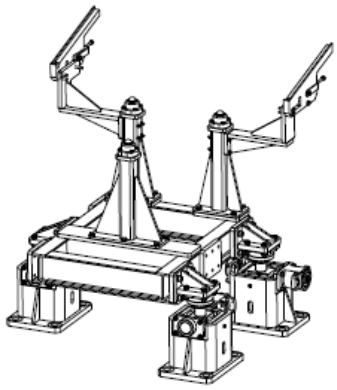
GES MÜHENDİSLİK



FLOOR DRILLING POSITION:



**A-A
1:10**



mass: 282.3 kg

8	HEX NUT STYLE1 GRADE A M8	22	Stainless Steel A4	ISO 4032 M8-A4	47.43.77
	ECROU H STYLE1 GRADE A M8		Acier Inox A4		050.9
16	NORMAL PL WASHER 5X10	21	Stainless Steel A4	ISO 7089 5x10-A4	47.78.15
	RONDELLE PLATE NORMALE 5X10		Acier Inox A4		005.1
8	HEX SKT HD CAP SCREW M5X90	20	St. Steel A4	ISO 4762 M5x90-A4	
	VIS CHC M5X90				
18	NORMAL PL WASHER 12X24	19	Stainless Steel A4	ISO 7089_12x24-A4	47.78.15
	RONDELLE PLATE NORMALE 12X24		Acier Inox A4		012.2
18	HEX SKT HD CAP SCREW M12X30	18	St. Steel A4	ISO 4762 M12x30-A4	47.62.71
	VIS CHC M12X30				411.0
24	SPRING LOCK WASHER M10 (GROWER)	17	St. Steel A4	Bossard : BN 673	47.78.15
	RONDELLE RESORT M10 (GROWER)			ST0260097	210.8
12	HEX NUT STYLE1 GRADE A M10	16	Stainless Steel A4	ISO 4032 M10-A4	47.43.77
	ECROU H STYLE1 GRADE A M10		Acier Inox A4		100.6
12	HEX HD screw M10x50	15	St. Steel A4	ISO 4014 M10x50-A4	
	Vis Tete Hexa M10x50			CAN BE HEAD SIZE DIN 933	
14	NORMAL PL WASHER 10X20	14	Stainless Steel A4	ISO 7089_10x20-A4	47.78.15
	RONDELLE PLATE NORMALE 10X20		Acier Inox A4		010.4
14	HEX HD SCREW GRADE A M10X25	13	St. Steel A4	ISO 4017 M10x25-A4	47.62.82
	VIS H GRADE A M10X25				360.5
12	NORMAL PL WASHER 6X12	12	Stainless Steel A4	ISO 7089_6x12-A4	47.78.15
	RONDELLE PLATE NORMALE 6X12		Acier Inox A4		006.0
12	HEX HD SCREW GRADE A M6X30	11	St. Steel A4	ISO 4017 M6x30-A4	47.62.82
	VIS H GRADE A M6X30				261.7
3	Parallel pin unhardened 10x40	10	Steel	ISO 2398 10x40-St-m6	No SCEN
	Goupille paral non dur 10x40				
6	Parallel pin unhardened 5x20	9	St. Steel A4	ISO 2398_5x20-A4-m6	No SCEN
	Goupille paral non dur 5x20				
1	TCLD COLLIMATOR GUIDE R	8		LHCTCLD0123	
				ST0795519	
1	TCLD COLLIMATOR GUIDE L	7		LHCTCLD0122	
				ST0792070	
3	JACK ASSEMBLY	6		LHCTCLDA0200	
	ENSEMBLE PIED			ST0943265	
3	ASSEMBLY FOOT WITH BALL	5		LHCTCS_0224	
	ASSEMBLAGE PIED AVEC BILLE			ST0500204	
3	SUPPORT 1	4		LHCTCLDA0147	
	SUPPORT 1			ST0346015	
2	VERTICAL SUPP. ASSEMBLY 02	3		LHCTCLDA0146	
	ENSEMBLE SUPP. VERTICAL 02			ST0704091	
1	VERTICAL SUPP. ASSEMBLY 01	2		LHCTCLDA0145	
	ENSEMBLE SUPP. VERTICAL 01			ST0704824	
1	BOTTOM FRAME	1		LHCTCLDA0144	
	STRUCTURE INFERIEURE			ST0682375	

QUA	DESCRIPTION	POS	MAT.	OBSERVATIONS	REF. CERN
ENS/ASS				S.ENS/S.ASS	
Auxiliary Collimators in SS Area - Model A					
CRYOSTAT BYPASS + COLLIMATOR ASS. SUPPORT ASSEMBLY v3 (600mm)				SCALE	1:10
CRYOSTAT BYPASS + COLLIMATOR ENS. ENSEMBLE SUPPORT v3 (600mm)				APPROVED	
				REPLACES	ST0696763_02
NON VALABLE POUR EXECUTION NOT VALID FOR EXECUTION				REV	2
LHCTCLDA0143				SIZE	IND.
					2

DESIGN, DIMENSIONS, TOLERANCES
 SELON NORMES ISO
 ACCORDING TO THE STANDARDS

DIMENSIONS IN MILLIMETERS
 UNLESS OTHERWISE SPECIFIED
 DIMENSIONS IN MILLIMETERS
 UNLESS OTHERWISE SPECIFIED

THIS DOCUMENT IS THE PROPERTY OF GES MÜHENDİSLİK
 IT IS NOT TO BE REPRODUCED OR TRANSMITTED IN ANY FORM OR BY ANY MEANS
 WITHOUT THE WRITTEN PERMISSION OF GES MÜHENDİSLİK

EGE / GEMA Endüstriyel Kontrol



ecoflo



PNEUMATIC
CONTROL
VALVES



ELECTRIC
CONTROL
VALVES





1.2 Introduction to the Experiment

The Short Baseline Neutrino (SBN) Facility at the Fermi National Accelerator Laboratory (FNAL) in the USA is an experiment focused on the detection of neutrino interactions and aims to investigate the possible existence of so-called sterile neutrinos. The SBN Facility will incorporate the ICARUS detector that was until 2014 operational at the underground Gran Sasso Laboratory of Istituto Nazionale di Fisica Nucleare (INFN, Italy), and has recently been moved to FNAL following an extensive refurbishment carried out at CERN.

At the FNAL site the ICARUS detector will be exposed to a large flux of cosmic rays, mitigated only by a 3 m thick concrete shielding wall. A Cosmic Ray Tagger (CRT) system will be deployed above the detector in order to tag cosmic ray events, as schematically shown in Figure 2.

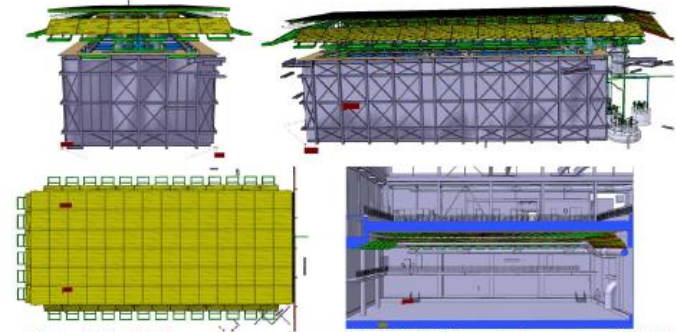


Figure 2: The CRT planes and support structure, and the ICARUS detector in the experimental hall at FNAL

The CRT is organized in 122 modules. Each module is a square structure of orthogonal layers of plastic scintillator bars enclosed inside aluminium boxes (see Figure 3).

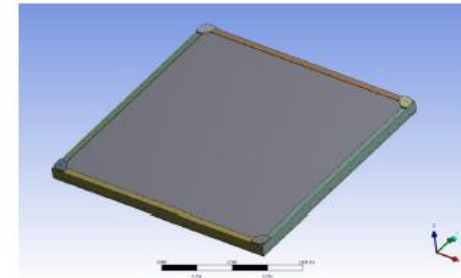


Figure 3: CRT aluminium box

CERN'in tercihi ASAŞ oldu

© KASIM 8, 2017 0 YORUM 1749 OKUNMA



Geçen yıl Türkiye'nin bakanlık onaylı ilk AR-GE merkezini kuran ve haberleşme uyduları için aksenal oluklu alüminyum ısı boruları üreten ASAŞ Alüminyum, Avrupa Nükleer Araştırma Merkezi'nde (CERN) yürütülen bir proje kapsamında açılan iki ihaleyi kazandı.

Böylece ASAŞ, CERN'in alüminyum sektöründeki ilk ve tek Türk tedarikçisi oldu. ASAŞ, CERN'in kullanacağı özel imalat alüminyum boruları ve panelleri üretmek üzere prototip çalışmalarına başladı.



Türkiye Odalar ve Borsalar Birliği

HANGİ KAHVE ZİNCİRİ BAYILIK VERİYOR?  "GELİRİN %60'1 YURTDIŞINDAN GELECEK"  YABANCILAR NE ZAMAN ALIMA GEÇER?

Ekonomist  86
23 - 29 Kasım 2019 111 29 15273 Sayı 2019/15
Teknolojide  5G dönüşümü
5G TEKNOLOJİSİ HANGİ FIRSATLARI YARATACAK? | YERLİ ŞİRKETLERİN GELİŞTİRDİĞİ ÜRÜN VE HİZMETLER | KATMA DEĞER SAĞLAYACAK SEKTÖRLER

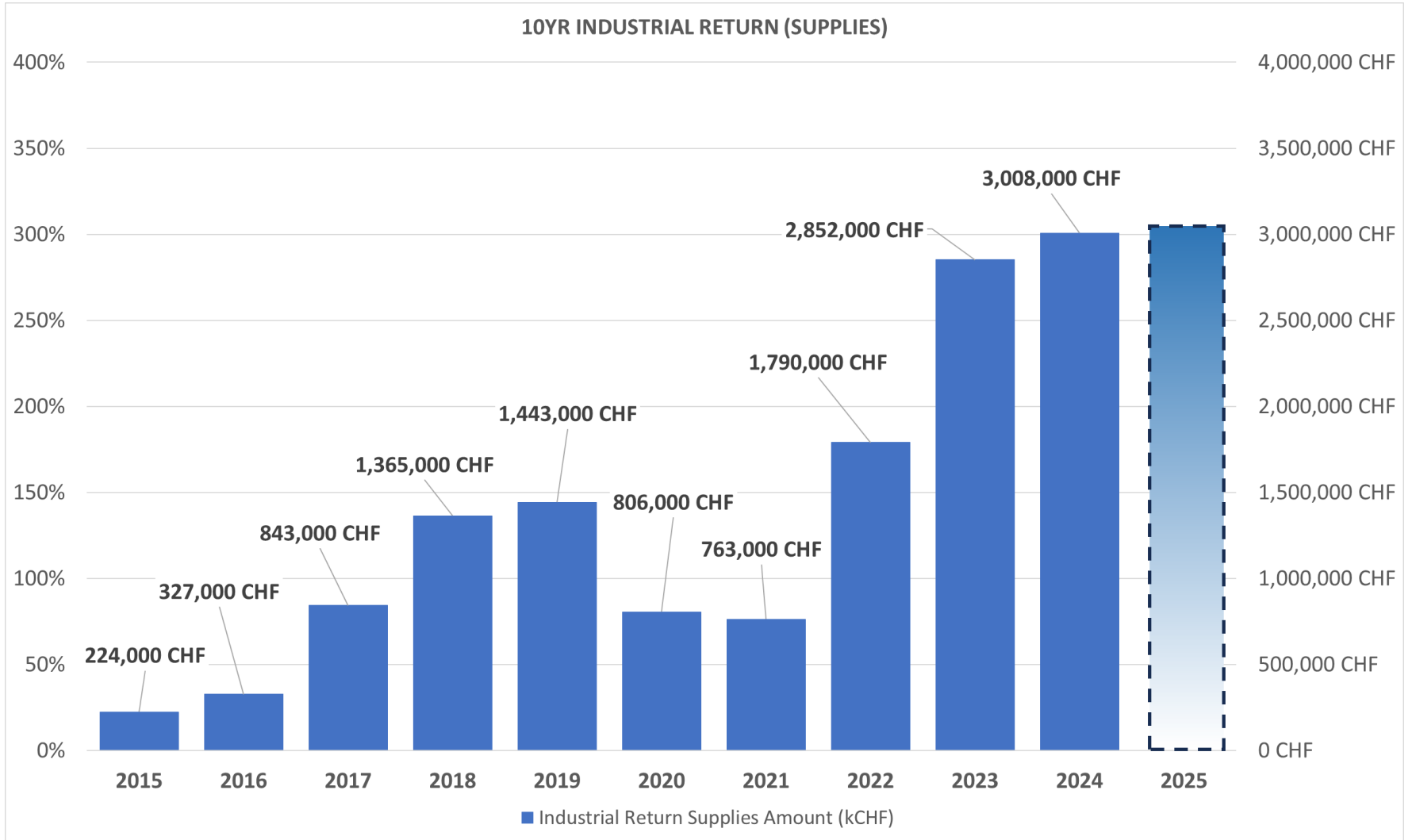
EKONOMİST'İ CEBİNİZDE TAŞIYIN



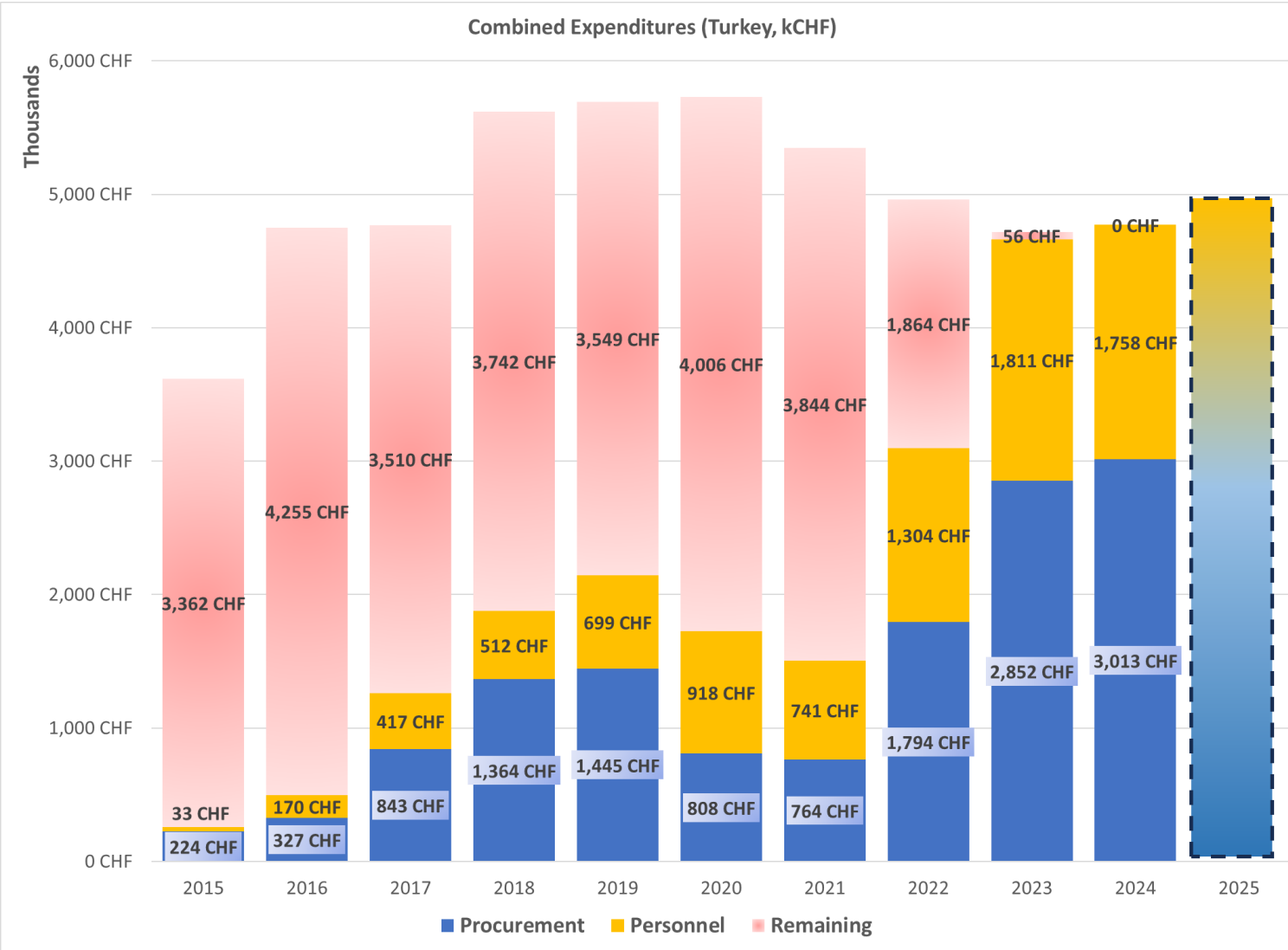
Bayramođlu Endüstriyel Çelik



TOBB - CERN Sanayi İrtibat Ofisi



TOBB - CERN Sanayi İrtibat Ofisi



2023 Yılında Ülke olarak ödenen katılım payının **%98.8** unu geri aldık.


















2024 Yılında Ülke olarak ödenen katılım payının **%100** ünü geri aldık.


















2025 Eylül itibarı ile bu senede projeksiyonlar **%100** geri dönüş olacağını gösteriyor.



TOBB - CERN Sanayi İrtibat Ofisi

Industrial return coefficients for supply contracts

Country	Supplies	
	Well balanced	Poorly balanced
 Austria		0.76
 Belgium		0.45
 Federative Republic of Brazil ⁵	N/A	N/A
 Bulgaria	1.19	
 Republic of Croatia ^{2,4}	<u>0.97</u>	
 Republic of Cyprus ³		0.27
 Czech Republic	1	
 Denmark		0.62
 Republic of Estonia	1.44	
 Finland		0.59
 France	1.39	
 Germany		0.85
 Greece		0.44
 Hungary		0.69
 Republic of India ²		0.68
 Israel		0.25
 Italy	1.29	

Country	Supplies	
	Well balanced	Poorly balanced
 Republic of Latvia ²		0.68
 Republic of Lithuania ²		0.75
 Netherlands		0.56
 Norway		0.43
 Islamic Republic of Pakistan ^{2,4}	<u>0.43</u>	
 Poland		0.74
 Portugal		0.72
 Romania		0.4
 Serbia		0.51
 Slovakia		0.62
 Republic of Slovenia ³		0.7
 Spain		0.93
 Sweden		0.42
 Switzerland	5.01	
 Republic of Türkiye ^{2,4}	<u>2.28</u>	
 Ukraine ^{2,4}	<u>0.24</u>	
 United Kingdom		0.51



Croatia, Pakistan, Türkiye and Ukraine reached their ceiling in 2024, and shall be considered as well balanced



No data for Brazil as it joined CERN as an Associate Member State in March 2024



25/03/2025

Cristina Lara Arnaud



Türkiye Odalar ve Borsalar Birliği

TOBB - CERN Sanayi İrtibat Ofisi

Application Procedure <http://careers.cern/>

CERN Accelerating science Sign in Directory

Careers at CERN HOME ABOUT US OUR OPPORTUNITIES HIRING PROCESS OUR STORIES CONTACT

Careers at CERN

Hundreds of fields, thousands of people, millions of followers. Experienced or not, CERN could be your next opportunity. Take part!

Search for Opportunities (e.g. Engineer)

Professionals

Experienced Graduates

Entry-Levels

Students

How can I help you?

- Doctoral Student Programme
- Technical Student Programme
- Administrative Student Programme
- Summer Student Programme
- CERN openlab Student Programme
- Short-Term Internship Programme




CERN ve Ortak Üyelik

<https://kt.cern/>

CERN Accelerating science

[Sign in](#) [Directory](#)

 Knowledge Transfer
Accelerating Innovation

[ABOUT US](#) [ACTIVITIES & SERVICES](#) [TECHNOLOGIES](#) [COMPETENCIES](#) [APPLICATIONS](#) [WHO ARE YOU?](#) [NEWS](#) [EVENTS](#)

Technologies available for knowledge transfer

Browse our technology and know-how portfolio

Browse our technology and know-how

CERN's technical expertise and most innovative technologies are available for scientific and commercial purposes through a variety of technology transfer opportunities: R&D collaborations, [CERN technology in your start-up](#), service and consultancy and licensing.

Read more about these opportunities [here](#), [learn how you can collaborate with us](#), or just [contact us](#) if you have any inquiries.

[Or do you work at CERN? Learn more about getting involved in Knowledge Transfer at CERN.](#)

Find all value propositions [here](#).

Search technologies

Type some words. For example: 'detector' or 'high energy'



Türkiye Odalar ve Borsalar Birliği

“CERN-Türkiye Knowledge Transfer Summit”

30 September - 1 October 2025



ISU | ISTINYE
UNIVERSITY
ISTANBUL



Webinar on CERN Technologies | Towards the CERN - TÜRKİYE KNOWLEDGE TRANSFER SUMMIT

CERN, İSÜ, MLPCARE ve TOBB ortaklığıyla düzenlenen zirvede işbirliği halinde bulunduğumuz partner kurumlara teşekkür ederiz: TENMAK, TÜBİTAK, TÜSEB, TÜRK PATENT, TOBB-ETÜ, TFD, Bilişim Vadisi, BTM, İSTKA.



Teşekkürler...



Türkiye Odalar ve Borsalar Birliği