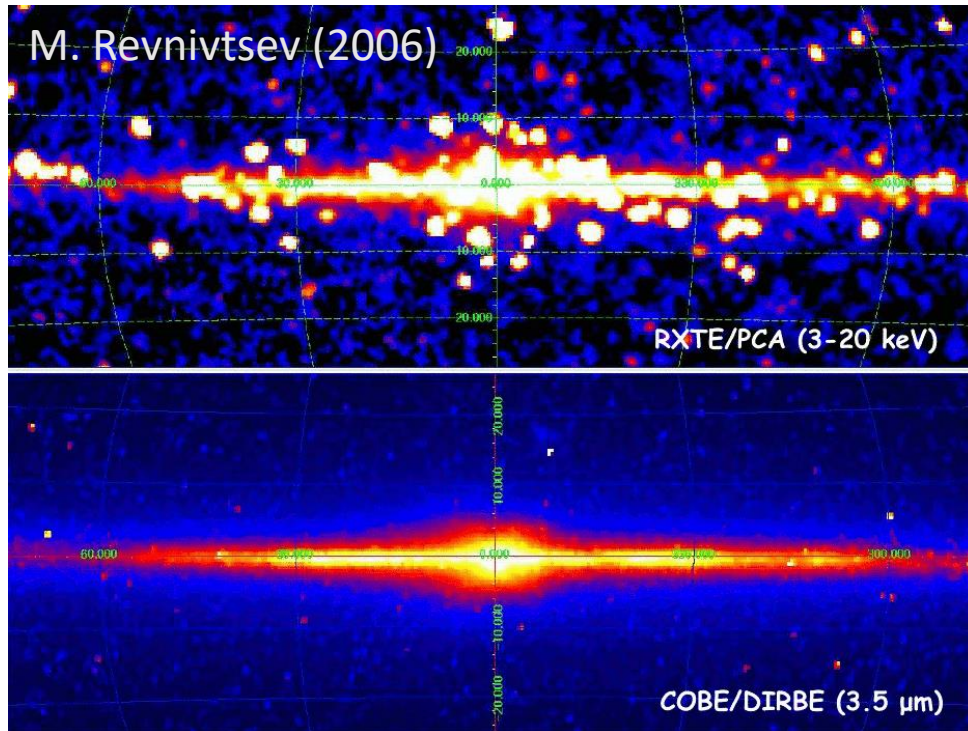


X-ray emission from the nuclear stellar disk based on SRG/ART-XC data

Nezabudkin Valentin (IKI RAS/MIPT, nezabudkin.vo@cosmos.ru), Krivonos Roman (IKI RAS), ART-XC team

Large-scale view on Galactic Ridge X-ray Emission (GRXE)

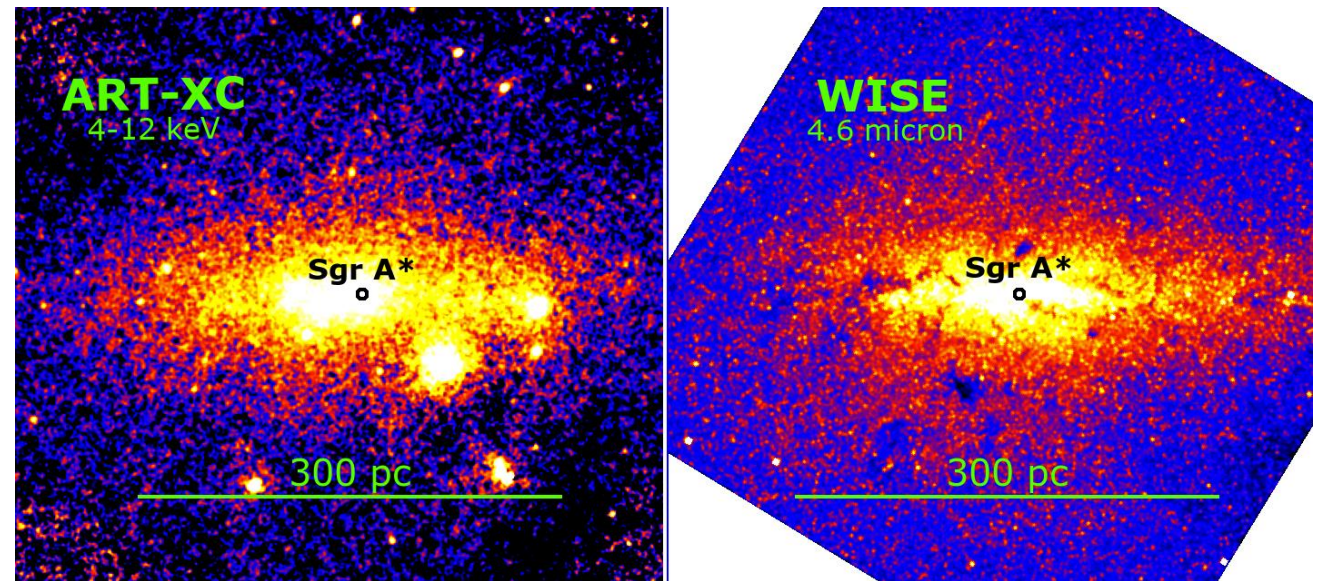
← 30 kpc wide →



GRXE Origin - Integral emission from binary systems with an accreting white dwarf

Small-scale view at inner Galactic Center

← 300 pc wide →



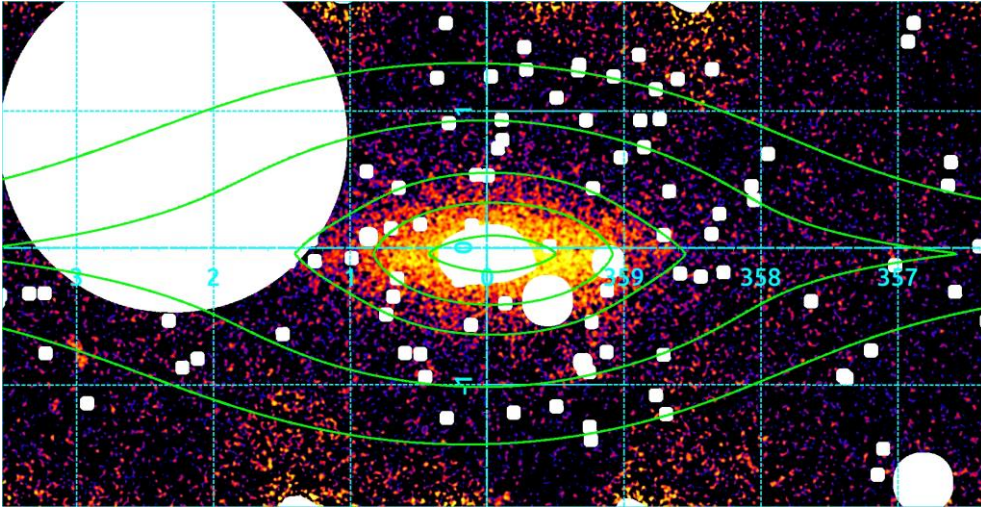
Nuclear Stellar Disk (NSD) - an extended stellar structure in the center of the Galaxy
Scale - 300 pc

A place of active star formation

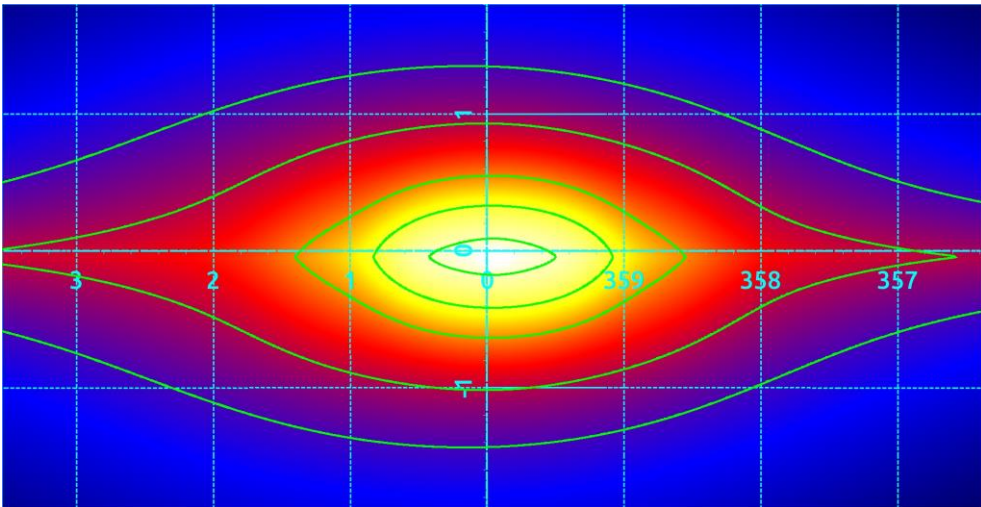
X-ray emission from the nuclear stellar disk based on SRG/ART-XC data

Nezabudkin Valentin (IKI RAS/MIPT, nezabudkin.vo@cosmos.ru), Krivonos Roman (IKI RAS), ART-XC team

ART-XC X-ray data



Stellar mass model



Work steps

ART-XC telescope map processing

Reproduction of 3D models of the stellar mass distribution of the Galaxy center (NSC, NSD, Galactic bulge and disk)

Measurement of X-ray emissivity of the NSD

