

# Status do Protótipo e Montagem

Guilherme Saito, Marco Leite,  
Marcel Kuriyama e Ricardo Menegasso

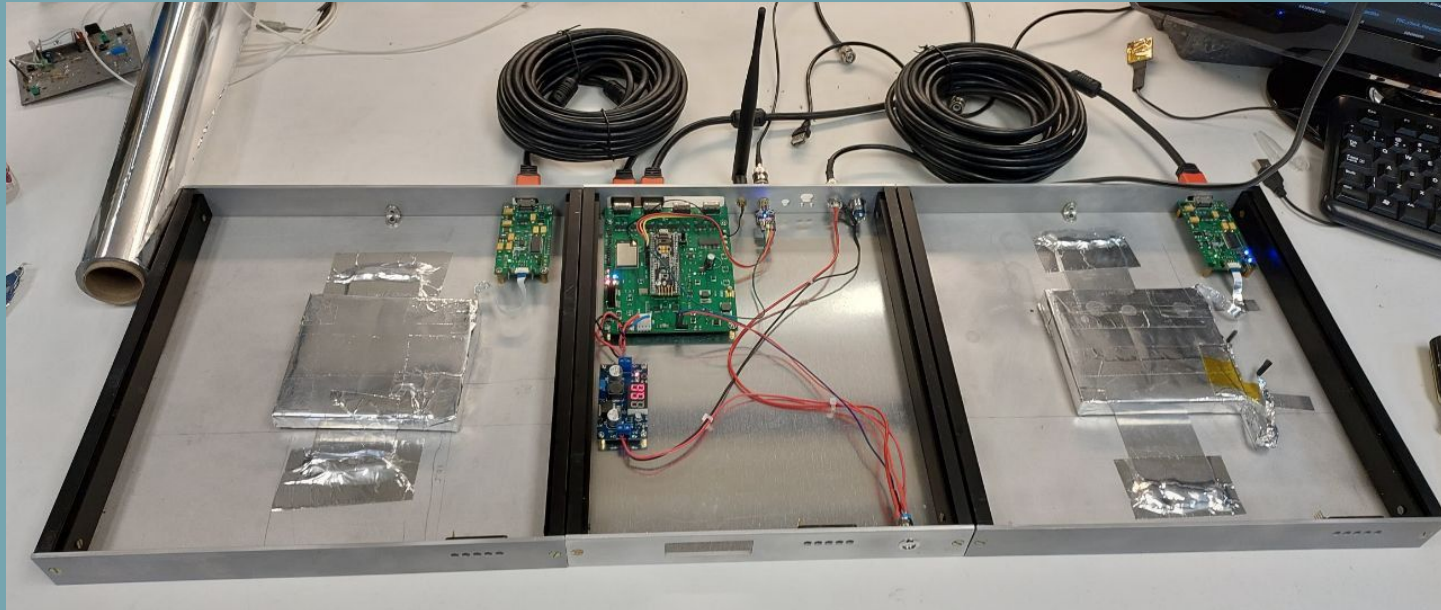
Instituto de Física da USP

11 de Maio de 2022



# Protótipo

---



# Novo Cintilador



20cm x 20 cm  
400cm<sup>2</sup>

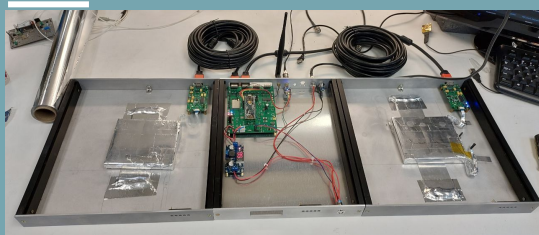
11cm x 13 cm  
143cm<sup>2</sup>

~9/s

~1/s

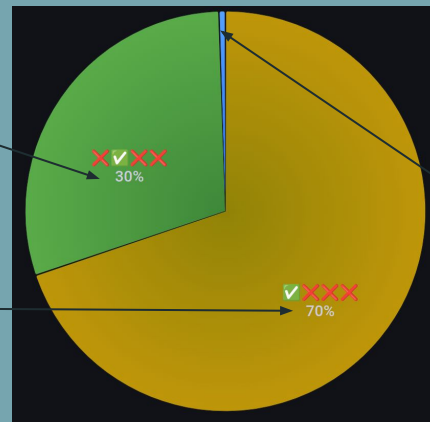


# Disposição

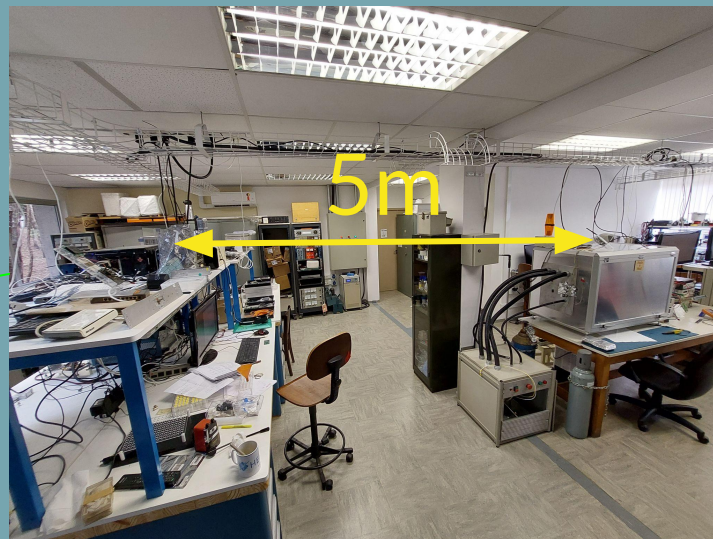


Contagem só  
no Frontend 2

Contagem só  
no Frontend 1

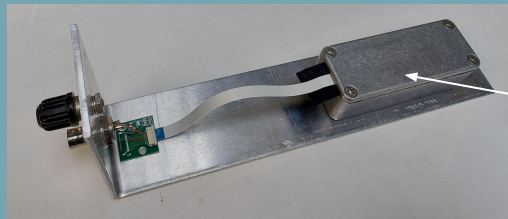
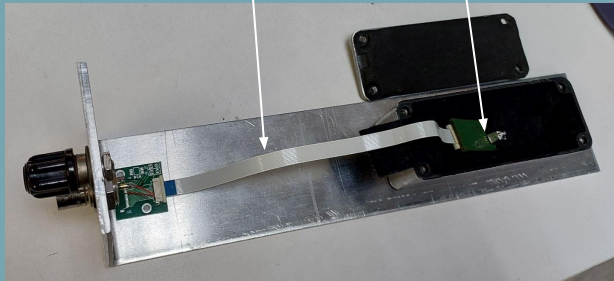


Coincidência  
~10/h

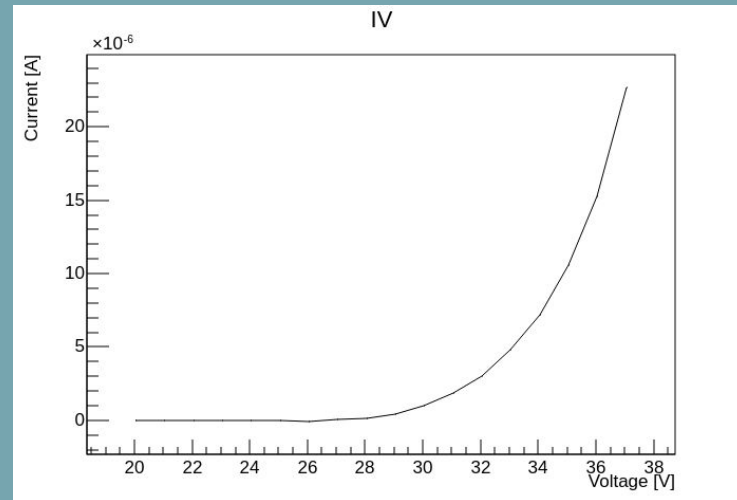
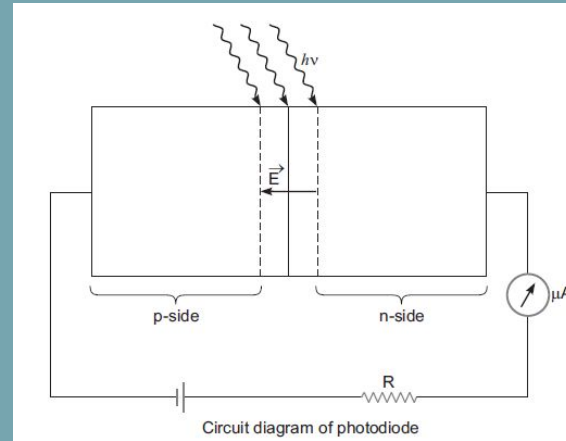


# Caracterização SiPM

Flat Cable  
SiPM



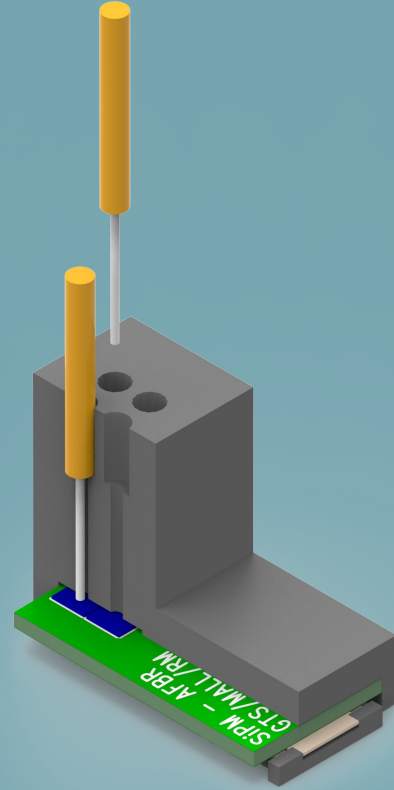
Caixa protegida da luz



# Teste SiPM

---

- Certificar montagem e funcionamento do SiPM
- Antes de prender definitivamente no cintilador
- Pulsar LED através de fibra ótica



# Material Disponível

---

Com o material disponível teremos:

Montagem de 3 estações com 2 planos de detecção de 2 cintiladores cada

